



# Employment Bulletin

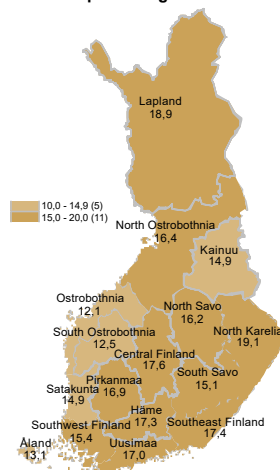
May 2020



Ministry of Economic Affairs  
and Employment of Finland

## In May, 432,700 unemployed jobseekers

Unemployed jobseekers' percentage of the workforce by ELY centre



A total of 432,700 unemployed jobseekers were registered at the Employment and Economic Development Offices at the end of May. This is 206,200 more than a year earlier. The number of unemployed jobseekers decreased by 400 from the previous month. Measures to slow down the spread of coronavirus have increased the number of lay-offs. Unemployed jobseekers accounted for 16.5% of the labour force, which is 7.9 percentage points more than the year before. The figures are from the Employment Service Statistics of the Ministry of Economic Affairs and Employment.

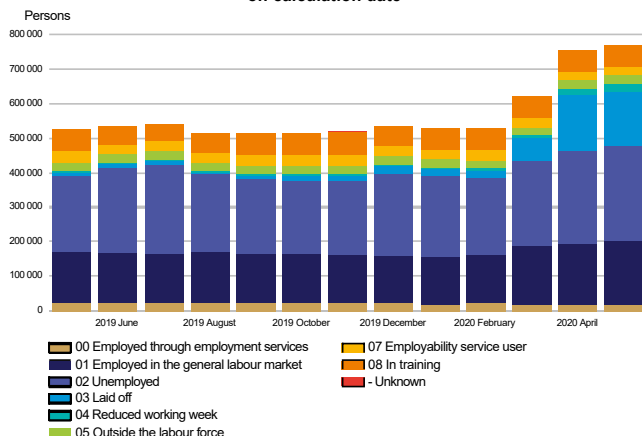
### Trends:

- Total number of jobseekers increased by 244,000
- The number of unemployed jobseekers increased by 206,000 from the previous year
- The number of people fully laid off was up 150,000.
- Services included in the activation rate had 18,000 less people than a year ago
- 21,000 new job vacancies fewer than last year



## All jobseekers

**Jobseekers by group  
on calculation date**



### The total number of jobseekers increased

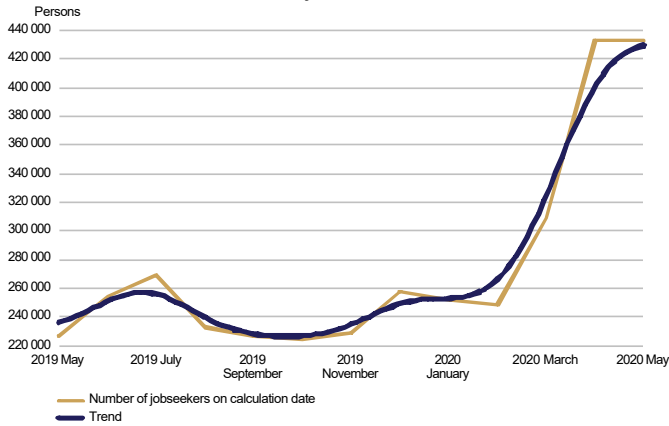
At the end of May, the number of jobseekers registered at the Employment and Economic Development Offices totalled 768,600, up 244,300 on the previous year. Of the jobseekers, 380,400 were men and 388,200 were women. Compared to the situation a year ago, the number of men increased by 122,100 and the number of women by 122,200.

Of the jobseekers, 203,900 were employed, 186,300 of them were on the open labour market and 17,500 were employed through the services of the employment and economic development administration. The number of jobseekers on the open labour market increased by 36,600 from May a year earlier. The increase is mainly due to increased number of people registering as unemployed jobseekers prior to lay-offs. The number of jobseekers outside the labour force was 108,900, of whom 22,700 were in services promoting employment and 63,200 in training. Of the jobseekers, 432,700 were unemployed jobseekers, which is 206,200 more than the year before. In May, 158,100 of unemployed jobseekers were fully laid off, which is 5,600 less than in April. The number of people fully laid off increased by 149,800 from May a year earlier. Furthermore, jobseekers on a reduced working week numbered 23,200, representing an increase of 17,700 from the year before.



## Unemployed jobseekers

**UNEMPLOYED JOBSEEKERS**  
monthly and trend

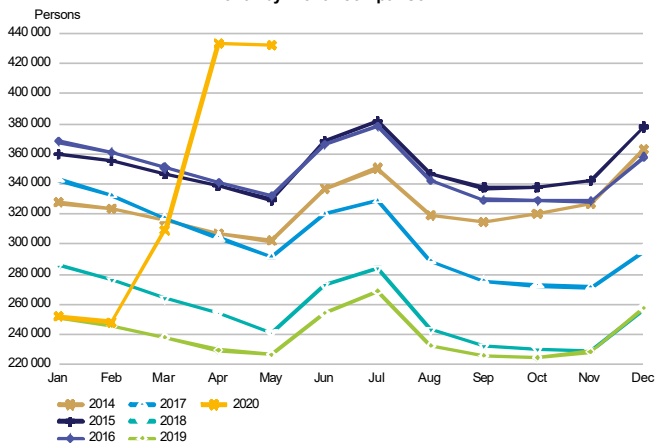


### The number of unemployed jobseekers increased in May

At the end of May, the number of unemployed jobseekers registered at the Employment and Economic Development Offices totalled 432,700, up 206,200 on the previous year. Compared with April, the number of unemployed jobseekers decreased by 400. The number of new job searches among unemployed jobseekers totalled 22,200, up 9,500 from May a year ago. In May, the number of starting periods of unemployment totalled 97,100 representing an increase of 53,100 on the year before. The number of starting periods is always greater than the number of job searches because new unemployment periods are also registered from the existing groups of jobseekers.

The number of foreign citizens among unemployed jobseekers totalled 41,500, up 16,100 from May a year ago. Of these foreign unemployed jobseekers, EU/EEA citizens accounted for 13,000 at the end of May, up 6,600 from the year before.

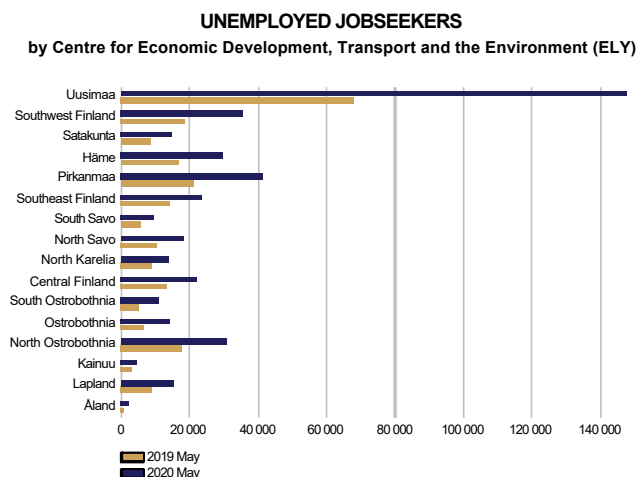
**UNEMPLOYED JOBSEEKERS**  
month by month comparison



In May, 158,100 of unemployed jobseekers were fully laid off, which is 5,600 less than in April. The number of people fully laid off increased by 149,800 from May a year earlier. In May, the number of job searches among the fully laid off people totalled 10,700 representing an increase of 9,900 on the year before. The number of starting periods of full lay-offs was 54,100, up 51,600 from May a year ago. The number of fully laid off people increased in all groups; the most in the groups of service and sales workers (41,300), 'unknown' (31,000), technicians and associate professionals (16,200), professionals (15,600) and craft and related trades workers (14,100).



## Unemployed jobseekers by region



### Unemployment increased in the areas of all ELY Centres

Compared to the same period in the previous year, the number of unemployed jobseekers increased in May in the areas of all Centres for Economic Development, Transport and the Environment (ELY Centres); the most in Uusimaa (118%), Ostrobothnia (109%) and South Ostrobothnia (103%). The number of unemployed jobseekers increased the least in Kainuu (53%), North Karelia (53%), Southeast Finland (63%), Central Finland (65%) and South Savo (66%). In Åland, the number of unemployed jobseekers increased 311%.

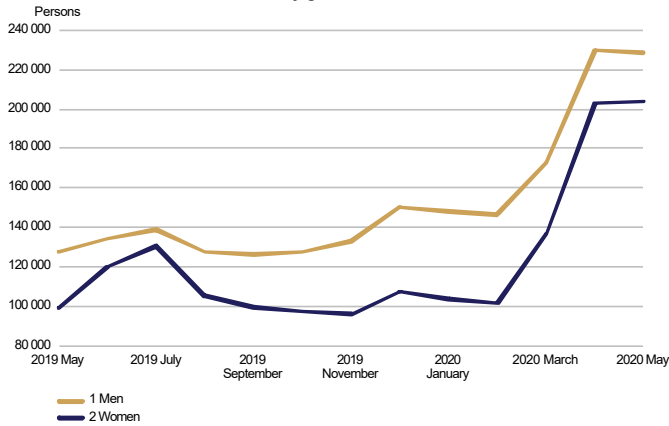
### Unemployed jobseekers and jobs vacant in Employment and Economic Development Office by ELY centre

ELY centre	Unemployed jobseekers			Change		Of the Unemployed		Jobs vacant			Change	
	May 2020	Apr 2020	May 2019	May 2020	May 2019	May 2020	jobseekers' percentage fully laid off	May 2020	Apr 2020	May 2019	May 2020	May 2019
Uusimaa	147 687	143 261	67 860	79 827	118	61 948	17,0	12 294	13 310	18 998	-6 704	-35
Southwest Finland	35 321	37 325	18 334	16 987	93	12 790	15,4	4 973	4 824	5 423	-450	-8
Satakunta	14 638	15 233	8 496	6 142	72	4 382	14,9	1 363	1 687	1 620	-257	-16
Häme	29 449	28 587	16 546	12 903	78	9 931	17,3	2 975	2 984	3 585	-610	-17
Pirkanmaa	41 333	40 146	20 811	20 522	99	14 888	16,9	3 609	4 396	4 799	-1 190	-25
Southeast Finland	23 356	23 754	14 329	9 027	63	7 147	17,4	1 784	1 892	2 019	-235	-12
South Savo	9 356	9 600	5 639	3 717	66	2 948	15,1	1 411	1 590	1 237	174	14
North Savo	17 981	18 423	10 187	7 794	77	6 196	16,2	3 072	4 143	3 062	10	0
North Karelia	13 561	14 311	8 849	4 712	53	3 577	19,1	1 198	1 422	1 002	196	20
Central Finland	22 163	22 132	13 420	8 743	65	6 693	17,6	1 681	1 934	2 415	-734	-30
South Ostrobothnia	10 589	11 370	5 222	5 367	103	4 128	12,5	2 082	2 320	2 306	-224	-10
Ostrobothnia	14 004	13 725	6 692	7 312	109	6 028	12,1	1 682	2 058	1 787	-105	-6
North Ostrobothnia	30 617	31 855	17 493	13 124	75	9 869	16,4	3 692	3 818	4 118	-426	-10
Kainuu	4 704	5 123	3 071	1 633	53	1 375	14,9	850	1 012	812	38	5
Lapland	15 295	15 696	8 984	6 311	70	4 872	18,9	1 796	1 719	1 968	-172	-9
Åland	2 018	1 919	491	1 527	311	953	13,1	111	170	351	-240	-68
Abroad	607	596	100	507	507	424	.	2 500	3 105	2 282	218	10
<b>WHOLE COUNTRY</b>	<b>432 681</b>	<b>433 058</b>	<b>226 526</b>	<b>206 155</b>	<b>91</b>	<b>158 149</b>	<b>16,5</b>	<b>47 073</b>	<b>52 384</b>	<b>57 784</b>	<b>-10 711</b>	<b>-19</b>



## Unemployed jobseekers by gender and age-group

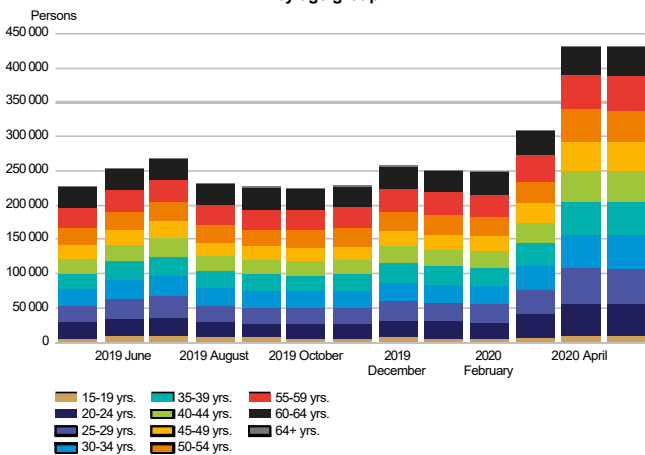
**UNEMPLOYED JOBSEEKERS  
by gender**



### Unemployment increased more among women than men

Of the unemployed jobseekers, 228,700 (53%) were men and 204,000 (47%) were women, indicating a decrease of 1,300 for men and an increase of 900 for women from the figures for April. Compared with May a year ago, unemployment increased by 101,300 (79%) among men and by 104,900 (106 %) among women.

**UNEMPLOYED JOBSEEKERS  
by age group**



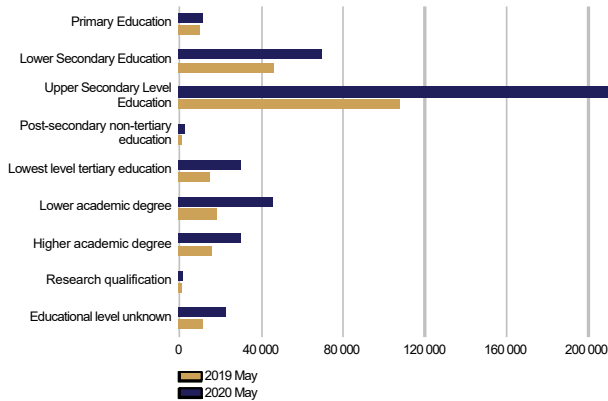
### Unemployment increased in all age groups

At the end of May, unemployed jobseekers under 25 years of age numbered 56,400, representing an increase of 27,700 from May a year ago. Youth unemployment increased from April by 100. For those under 20, the number of unemployed was 10,300. Among those over 50, the number of unemployed was 141,600, representing an increase of 56,600 on the year before. Among those over 55, the number of unemployed was 94,100, representing an increase of 34,300 on the year before. Proportionally, unemployment increased most among those between 35 and 44 (on average 112%) and those over 64 (119%).



## Unemployed jobseekers by levels of education and occupational group

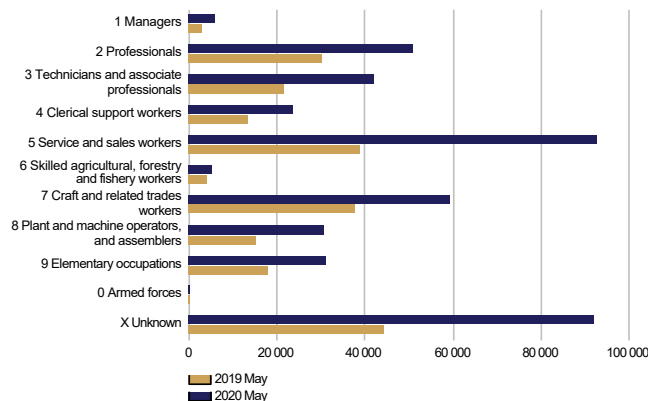
**UNEMPLOYED JOBSEEKERS  
by level of education**



### Unemployment increased at all levels of education

Examined by level of education, unemployment increased from May last year at all levels of education; the increase was greatest among those with post-secondary non-tertiary education (240%), lower-degree level tertiary education (149%), lowest level of tertiary education (105%) and upper secondary education (102%).

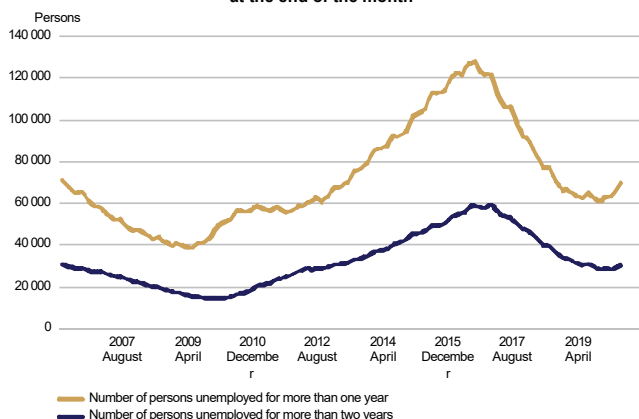
**UNEMPLOYED JOBSEEKERS  
by occupational group**



### Unemployment increased in all occupational groups

Examined by occupation, unemployment increased for all groups from May of last year; the most in the groups of service and sales workers (54,000), 'unknown' (47,500) and craft and related trades workers (21,600). Unemployment increased the least among soldiers (40), skilled agricultural, forestry and fishery workers (1,200) and managers (2,900).

**LONG-TERM UNEMPLOYED  
at the end of the month**

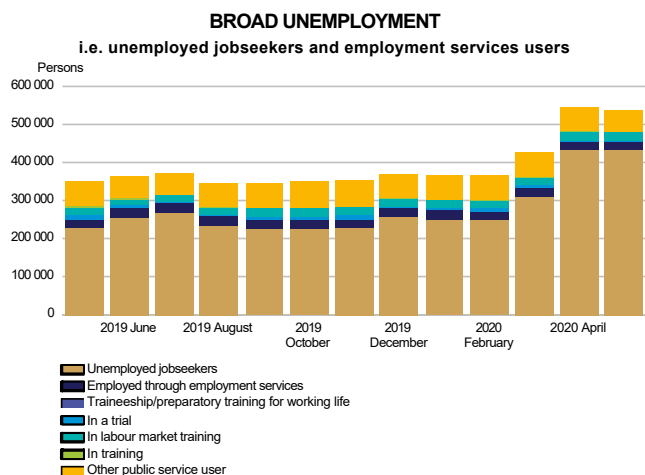


### Increase in long-term unemployment

At the end of May, the number of long-term unemployed who had been unemployed without interruption for more than a year amounted to 69,800, up 7,400 on the previous year. Of the long-term unemployed, 41,600 were men and 28,200 were women. The number of men increased by 4,500 (12%) from the previous year and the number of women by 2,900 (11%). Long-term unemployed who had been unemployed without interruption for more than two years numbered 30,400, which is 100 less than a year ago.



## Services

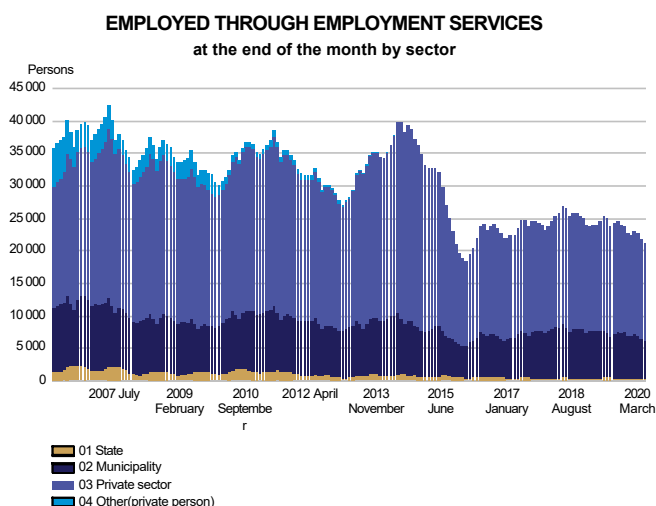


### Decrease in the number of persons covered by services

At the end of May, the number of persons covered by services included in the activation rate amounted to 105,700, down 18,100 on the previous year. Compared with April, the number of persons covered by such services decreased by 5,300. The activation rate at the end of May was 19.6 %, which is 15.7 percentage points lower than a year earlier. In all, 3.8 % of the labour force were covered by these services.

Of those covered by services, the number of men was 50,800, down 9,400 on the previous year. The number of women covered by these services was 54,800, down 8,600 on the previous year.

Broad unemployment, or the total number of unemployed jobseekers and those covered by services, was 538,400 at the end of May. This is 188,100 more than a year earlier. The increase in broad unemployment was mainly due to an increase in the number of unemployed jobseekers.



### The number of placements decreased in all sectors

At the end of May, the number of persons claiming pay subsidies, employed by the State or receiving start-up grants totalled 21,300, which is 3,900 less than the year before. Of those employed, 2% were in government jobs, 27 % in local government jobs and 71 % in the private sector. Since May last year, the number of placements has decreased by 22% in local government jobs, by 13% in the private sector and by 7% in government jobs. Of those employed, 52% were men. Placements for men decreased by 1,900, and those for women by 2,000 from the previous year.





## Labour market training, training and self-motivated studies

**PERSONS IN LABOUR MARKET TRAINING**  
in target profession at the end of the month

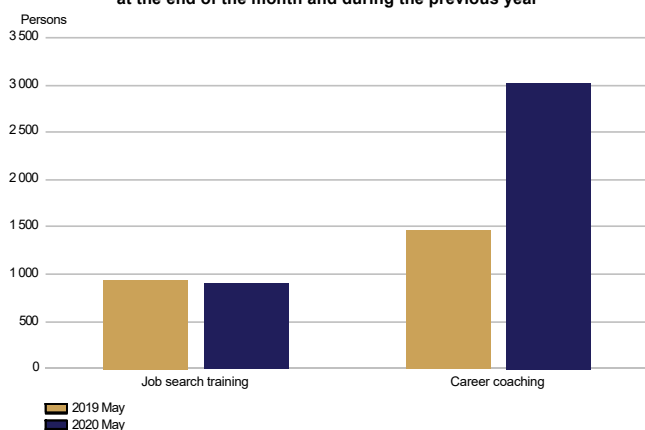


### The number of persons in labour market training decreased

At the end of May, labour market training was attended by 20,000 students, which is almost the same as the previous year. Of the students, 9,900 were men and 10,100 were women. The number of women increased by 400 and the number of men decreased by 400 from May the previous year. During May, 3,200 new students began labour market training, representing a decrease of 400 on the year before.

Based on target occupation, the largest subgroup within the category of 'unknown' were people in integration training (6,600), which is 400 more than the year before.

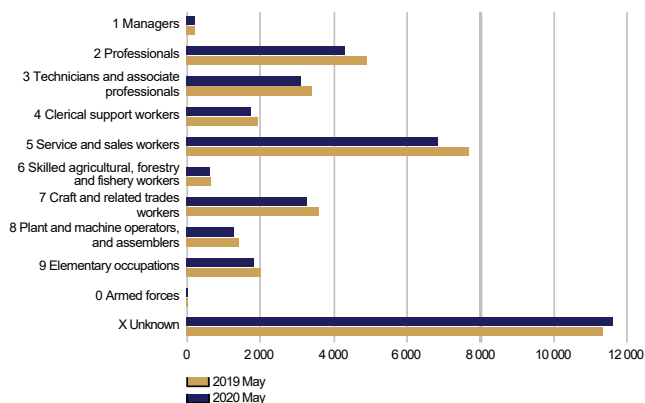
**IN TRAINING**  
at the end of the month and during the previous year



### The number of persons in training increased

At the end of May, 3,900 persons were in training, which is 1,500 more than the year before. Of those in training, 2,100 were men and 1,900 women. Career coaching was provided to 3,000 participants, which is 1,600 more than a year earlier. The number of participants in job search training was 900 which is the same as the previous year.

**IN SELF-MOTIVATED STUDIES**  
in person's profession at the end of the month



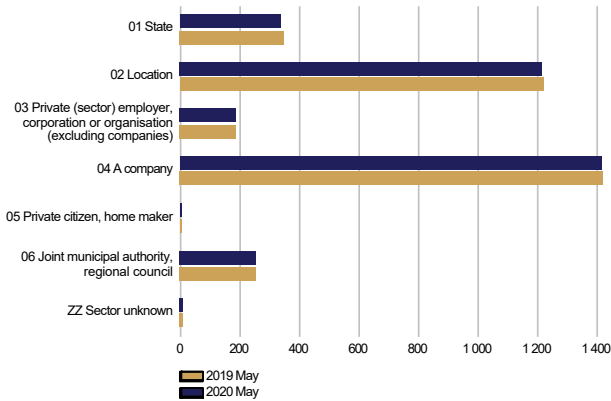
### The number of people in self-motivated study decreased from the previous year

Self-motivated studies supported by unemployment benefits were attended by a total of 34,800 people, representing a decrease of 2,300 on the year before. The number of men receiving unemployment benefits for studies was 14,400, down 1,100 on the previous year. Among women, the number was 20,400, representing a decrease of 1,200 on the year before. Occupation was undetermined in case of 10,100 persons in the group of 'unknown', up 500 on the previous year.



## Job alternation, rehabilitative work and trials

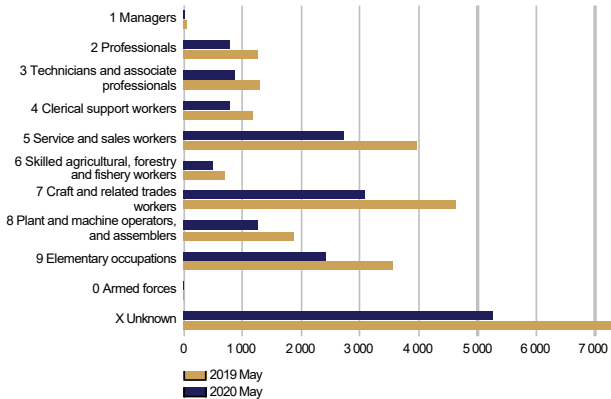
**AS A JOB ALTERNATION SUBSTITUTE**  
at the end of the month and during the previous year by sector



### The number of job alternation substitutes remained the same

A total of 3,400 persons were job alternation substitutes at the end of May, which is the same number as the year earlier. Of the substitutes, 1,200 were men and 2,200 were women. The number of both men and women remained the same as the previous year.

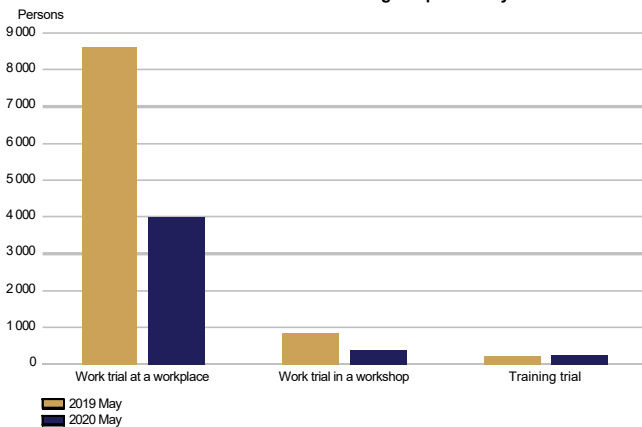
**REHABILITATIVE WORK ACTIVITIES**  
at the end of the month and during the previous year



### Fewer participants in rehabilitative work activities than in the previous year

A total of 17,600 persons participated in rehabilitative work activities at the end of May, which is 8,200 less than a year earlier. Of the participants 9,800 were men and 7,800 were women. The number of men decreased by 4,700 and the number of women by 3,500 from the previous year.

**IN TRIALS**  
at the end of the month and during the previous year



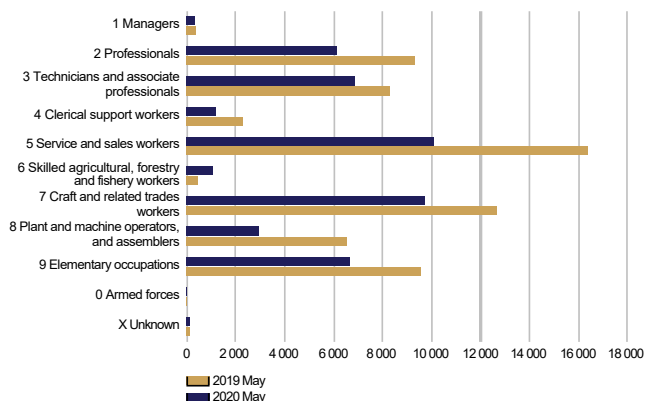
### Participation in work and training trials decreased

Work and training trials had a total of 4,600 participants at the end of May, which is 5,100 less than the year before. Of the participants, 2,400 were men and 2,200 were women. The number of men decreased by 2,200 and the number of women by 2,900 from the previous year.



## Jobs vacant

**NEW JOB VACANCIES**  
during the month and during the previous year



### Decrease in the number of new vacancies

The number of new vacancies reported to Employment and Economic Development Offices during May totalled 45,100, which is 20,900 less than in May last year. In all, the number of unfilled vacancies at Employment and Economic Development Offices in May amounted to 96,900, which is 32,200 less than a year ago. A total of 9,400 of these vacancies were filled during May, 2,900 of them through Employment and Economic Development Offices. A total of 40,300 vacancies were closed for applications because the application period had ended or because there was a sufficient number of applicants. In addition, a total of 2,600 vacancies were cancelled and 1,700 vacancies could not be filled. The number of vacancies remaining unfilled at the end of May was 47,100, down 10,700 on the previous year.

The number of new vacancies had increased the most in the group of agricultural, forestry and fishery workers (500) and in the category 'unknown' (30). The number of new vacancies had decreased the most in the groups of service and sales personnel (-6,300), plant and machine operators, and assemblers (-3,600), professionals (-3,200) and craft and related trades workers (-3,000).



### Summary table

EMPLOYMENT SITUATION AT THE END OF 2020 MAY (I) AND  
ACTIVITIES OF EMPLOYMENT AND ECONOMIC DEVELOPMENT OFFICES DURING MAY (II)  
WHOLE COUNTRY

I EMPLOYMENT SITUATION AT THE END OF MONTH	May-20	May-19	CHANGE NUMBER	CHANGE %
<b>A. JOBSEEKERS</b>				
1. Unemployed jobseekers	432 681	226 526	206 155	91,0
of whom fully laid off	158 149	8 388	149 761	1 785,4
2. On reduced working week	23 231	5 520	17 711	320,9
3. Those who have work	203 853	172 461	31 392	18,2
of whom in the general labour market	186 330	149 735	36 595	24,4
of whom employed through employment services	17 523	22 726	-5 203	-22,9
4. Persons outside the labour force	108 856	119 813	-10 957	-9,1
of whom in services promoting employment	22 662	34 987	-12 325	-35,2
of whom in training	63 199	60 268	2 931	4,9
<b>1-4 Total of jobseekers</b>	<b>768 621</b>	<b>524 320</b>	<b>244 301</b>	<b>46,6</b>
<b>B. LABOUR DEMAND</b>				
1. Jobs vacant	47 073	57 784	-10 711	-18,5
of those notified for over a month	18 631	21 453	-2 822	-13,2
of those notified for over 2 months	12 988	13 737	-749	-5,5
<b>C. PARTICIPATING IN SERVICES</b>				
1. Employed by the State	471	508	-37	-7,3
2. Employed by municipalities	5 754	7 364	-1 610	-21,9
3. Employed by the private sector	15 036	17 316	-2 280	-13,2
<b>1-3 Total number of employed people</b>	<b>21 261</b>	<b>25 188</b>	<b>-3 927</b>	<b>-15,6</b>
4. Labour market training	20 016	20 060	-44	-0,2
5. Training	3 940	2 410	1 530	63,5
6. Engaged in work/training trials	4 620	9 688	-5 068	-52,3
7. As a job alternation substitute	3 411	3 429	-18	-0,5
8. Rehabilitative work	17 616	25 839	-8 223	-31,8
9. Self-motivated studies supported by unemployment benefit	34 819	37 139	-2 320	-6,2
<b>1-9 Total number of people participating in services</b>	<b>105 683</b>	<b>123 753</b>	<b>-18 070</b>	<b>-14,6</b>
<b>D. STRUCTURE OF UNEMPLOYMENT</b>				
1. Unemployed women	203 954	99 089	104 865	105,8
2. Unemployed men	228 727	127 437	101 290	79,5
3. Under 25 years old	56 374	28 652	27 722	96,8
4. Over 50 years old	141 623	85 013	56 610	66,6
5. Unemployed over a year	69 766	62 386	7 380	11,8
6. Foreign unemployed	41 518	25 467	16 051	63,0
<b>E. UNEMPLOYMENT SECURITY</b>				
1. Unemployed members of employees' unemployment funds	197 006	75 472	121 534	161,0
<b>II EMPLOYMENT SITUATION DURING THE MONTH</b>				
1. Unemployed jobseekers	507 406	263 011	244 395	92,9
2. Other jobseekers	312 539	288 854	23 685	8,2
<b>1-2 Total number of jobseekers</b>	<b>819 945</b>	<b>551 865</b>	<b>268 080</b>	<b>48,6</b>
3. Vacancies during a month	96 931	129 143	-32 212	-24,9
New vacancies during a month	45 113	65 983	-20 870	-31,6
Vacancies filled during a month	9 417	12 490	-3 073	-24,6
of those filled with job-seekers at the Employment Service	2 911	5 059	-2 148	-42,5
Vacancies application period ended or sufficient number of applicants	40 331	57 469	-17 138	-29,8
Vacancies cancelled or could not be filled	4 303	4 197	106	2,5
4. Started spell of unemployment	97 081	44 008	53 073	120,6
5. Completed spell of unemployment	100 558	44 738	55 820	124,8
6. New jobs found through employment services	2 248	3 719	-1 471	-39,6
7. New entrants to labour market training	3 245	3 624	-379	-10,5



### Foreigners' summary table

FOREIGNERS' EMPLOYMENT SITUATION AT THE END OF 2020 MAY (I) AND  
ACTIVITIES OF EMPLOYMENT AND ECONOMIC DEVELOPMENT OFFICES DURING MAY (II)  
WHOLE COUNTRY

I EMPLOYMENT SITUATION AT THE END OF MONTH	May-20	May-19	CHANGE NUMBER	CHANGE %
<b>A. JOBSEEKERS</b>				
1. Unemployed jobseekers	41 518	25 467	16 051	63,0
of whom fully laid off	12 354	676	11 678	1 727,5
2. On reduced working week	1 256	194	1 062	547,4
3. Those who have work	17 725	16 508	1 217	7,4
of whom in the general labour market	16 301	14 759	1 542	10,4
of whom employed through employment services	1 424	1 749	-325	-18,6
4. Persons outside the labour force	28 797	29 928	-1 131	-3,8
of whom in services promoting employment	2 199	4 031	-1 832	-45,4
of whom in training	23 955	23 105	850	3,7
<b>1-4 Total of jobseekers</b>	<b>89 296</b>	<b>72 097</b>	<b>17 199</b>	<b>23,9</b>
<b>C. PARTICIPATING IN SERVICES</b>				
1. Employed by the State	...	8	...	...
2. Employed by municipalities	359	438	-79	-18,0
3. Employed by the private sector	1 174	1 358	-184	-13,5
<b>1-3 Total number of employed people</b>	<b>1 537</b>	<b>1 804</b>	<b>-267</b>	<b>-14,8</b>
4. Labour market training	8 617	8 231	386	4,7
5. Training	198	210	-12	-5,7
6. Engaged in work/training trials	929	2 179	-1 250	-57,4
7. As a job alternation substitute	54	55	-1	-1,8
8. Rehabilitative work	1 181	1 746	-565	-32,4
9. Self-motivated studies supported by unemployment benefit	14 892	14 920	-28	-0,2
<b>1-9 Total number of people participating in services</b>	<b>27 408</b>	<b>29 145</b>	<b>-1 737</b>	<b>-6,0</b>
<b>D. STRUCTURE OF UNEMPLOYMENT</b>				
1. Unemployed women	19 879	13 101	6 778	51,7
2. Unemployed men	21 639	12 366	9 273	75,0
3. Under 25 years old	3 249	2 081	1 168	56,1
4. Over 50 years old	9 560	6 533	3 027	46,3
5. Unemployed over a year	5 343	4 645	698	15,0
<b>E. UNEMPLOYMENT SECURITY</b>				
1. Unemployed members of employees' unemployment funds	9 557	3 678	5 879	159,8
<b>II EMPLOYMENT SITUATION DURING THE MONTH</b>				
1. Unemployed jobseekers	48 204	29 496	18 708	63,4
2. Other jobseekers	43 689	44 711	-1 022	-2,3
<b>1-2 Total number of jobseekers</b>	<b>91 893</b>	<b>74 207</b>	<b>17 686</b>	<b>23,8</b>
4. Started spell of unemployment	8 547	6 907	1 640	23,7
5. Completed spell of unemployment	6 792	4 635	2 157	46,5
6. New jobs found through employment services	132	234	-102	-43,6
7. New entrants to labour market training	1 340	1 411	-71	-5,0



## Regional table

UNEMPLOYED JOBSEEKERS AND JOBS VACANT BY ELY CENTRE AT THE END OF 2020 MAY  
WHOLE COUNTRY

ELY centre	Workforce	Unemployed jobseekers							Unemployed over a year	Disabled and chron. ill	Jobs vacant
		% of workforce	Total	Men	Women	Under 20 years old	Under 25 years old	Over 50 years old			
Uusimaa	870 203	17,0	147 687	75 729	71 958	2 925	17 381	44 636	24 770	8 705	12 294
Southwest Finland	228 666	15,4	35 321	18 352	16 969	833	4 669	11 477	4 988	3 214	4 973
Satakunta	97 967	14,9	14 638	7 833	6 805	392	1 965	5 566	2 530	1 544	1 363
Häme	170 007	17,3	29 449	15 680	13 769	811	3 740	10 654	5 066	3 089	2 975
Pirkanmaa	244 976	16,9	41 333	21 773	19 560	852	5 674	12 192	5 561	3 124	3 609
Southeast Finland	134 123	17,4	23 356	12 373	10 983	638	3 080	8 949	3 791	2 285	1 784
South Savo	61 786	15,1	9 356	5 229	4 127	253	1 174	3 842	1 571	1 275	1 411
North Savo	110 670	16,2	17 981	10 103	7 878	457	2 491	6 436	3 774	2 144	3 072
North Karelia	70 953	19,1	13 561	7 577	5 984	331	1 805	5 138	2 804	1 438	1 198
Central Finland	125 827	17,6	22 163	11 833	10 330	634	3 381	7 241	4 019	1 907	1 681
South Ostrobothnia	84 532	12,5	10 589	5 693	4 896	337	1 570	3 562	919	1 312	2 082
Ostrobothnia	115 591	12,1	14 004	7 736	6 268	323	1 793	4 501	1 867	1 296	1 682
North Ostrobothnia	186 791	16,4	30 617	16 272	14 345	984	4 927	9 053	5 098	2 701	3 692
Kainuu	31 604	14,9	4 704	2 628	2 076	152	649	1 889	644	574	850
Lapland	81 005	18,9	15 295	8 433	6 862	326	1 767	5 679	2 215	1 288	1 796
Åland	15 421	13,1	2 018	1 081	937	47	284	629	115	54	111
Abroad	0	0,0	607	402	205	...	22	179	34	...	2 500
<b>Total</b>	<b>2 630 122</b>	<b>16,5</b>	<b>432 681</b>	<b>228 727</b>	<b>203 954</b>	<b>10 297</b>	<b>56 374</b>	<b>141 623</b>	<b>69 766</b>	<b>35 954</b>	<b>47 073</b>



## Information about the website

On this website you will find the latest statistics from the Ministry of Economic Affairs and Employment's monthly Employment Bulletin. You can access a .pdf version of the current and previous months' Employment Bulletin by following the link on the right. The Employment Bulletin is based on the data from the MEAE's Employment Service Statistics. The Ministry of Economic Affairs and Employment compiles statistics on the clients of the Employment and economic development offices (TE offices), including registered job-seekers, labour market policy services, and job vacancies reported to TE offices by employers. The data is collected from the customer service registry (URA) used by the TE offices. This means that the data used by MEAE Employment Service Statistics is completely registry-based. The statistical data covers all persons, services, and open vacancies in the aforementioned groups, as separately defined in the registry by the classifications and variables for the statistical period in question.

Owing to seasonal variations, the Employment Bulletin always includes a comparison with the corresponding month in the previous year. The descriptors used in the Bulletin are also available in a table format. The Employment Bulletins are published at the end of the subsequent calendar month. The official date of publication is announced in advance.

The following symbols have been used:

. Category not applicable

... Data subject to secrecy

### Links:

- **Employment Service Statistics online:**  
<https://www.tem.fi/en/employment-bulletin-and-employment-service-statistics>
- **Employment Service Statistics, Description and Quality Description**  
<https://www.tem.fi/en/release-dates-of-statistics-and-description-and-quality-description>
- **You can access key information from MEAE's Employment Service Statistics by visiting the Statistics Finland's StatFin database:**  
[https://pxnet2.stat.fi/PXWeb/pxweb/en/StatFin/StatFin\\_\\_tym\\_\\_tyonv/](https://pxnet2.stat.fi/PXWeb/pxweb/en/StatFin/StatFin__tym__tyonv/)
- **The Employment Service Statistics data is also available from the MEAE Publications page (only available in Finnish).**  
<https://www.tem.fi/tyopoliittinen-aikakauskirja>
- **Joint monthly report from MEAE and Statistics Finland**  
[https://tilastokeskus.fi/til/tyti/tie\\_en.html](https://tilastokeskus.fi/til/tyti/tie_en.html)
- **Comparison between the statistics of Statistics Finland and the Ministry of Economic Affairs and Employment**  
[https://www.stat.fi/til/tyti/tyti\\_2016-08-23\\_men\\_001\\_en.html](https://www.stat.fi/til/tyti/tyti_2016-08-23_men_001_en.html)
- **Comparison between the Job Vacancy Survey of Statistics Finland and Employment Service Statistics of the Ministry of Economic Affairs and Employment**  
[https://tilastokeskus.fi/til/atp/atp\\_2017-01-02\\_men\\_001.html](https://tilastokeskus.fi/til/atp/atp_2017-01-02_men_001.html)

### Instructions for referencing:

Official Statistics of Finland (OSF): Ministry of Economic Affairs and Employment / Employment Service Statistics. ISSN 1797-3694 201Y:MM, Employment Bulletin, MONTH 201Y. Helsinki: Ministry of Economic Affairs and Employment (date of reference). Available at:  
<https://www.temtyollisyyskatsaus.fi>



## Contact information

### **Ministry of Economic Affairs and Employment**

Employment and Well-Functioning Markets Department

Kaisa-Mari Kuusela, +358 29 504 8294

Petri Syvänen, +358 29 504 8050

Hilkka Kattelus, +358 29 504 8047

E-mail: [firstname.lastname\(at\)tem.fi](mailto:firstname.lastname(at)tem.fi) /  
[tyonvalitystilasto\(at\)tem.fi](mailto:tyonvalitystilasto(at)tem.fi)

<https://www.temtyollisyyskatsaus.fi>

ISSN: 1797-3694 (online publication)

