



# Employment Bulletin

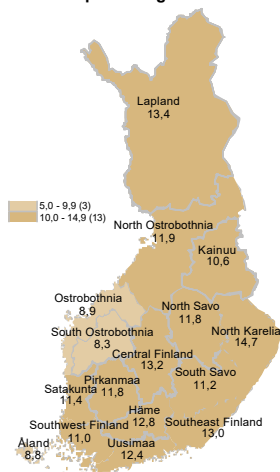
**November 2020**



Ministry of Economic Affairs  
and Employment of Finland

## 314,500 unemployed jobseekers in November

Unemployed jobseekers' percentage of the workforce by ELY centre



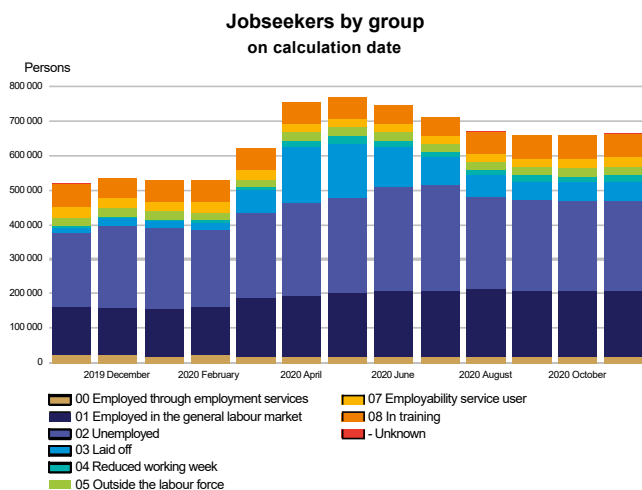
A total of 314,500 unemployed jobseekers were registered at the Employment and Economic Development Offices at the end of November. This is 86,000 more than a year earlier. The number of unemployed jobseekers increased by 1,800 from the previous month. Unemployed jobseekers accounted for 12.0% of the labour force, which is 3.3 percentage points more than the year before. The figures are from the Employment Service Statistics of the Ministry of Economic Affairs and Employment.

### Trends:

- Total number of jobseekers increased by 145,000
- The number of unemployed jobseekers increased by 86,000 from the previous year
- The number of people fully laid off increased by 43,000
- Services included in the activation rate had 5,000 less people than a year ago
- The number of new job vacancies decreased by 7,000 from last year



## All jobseekers



### The total number of jobseekers increased

At the end of November, the number of jobseekers registered at the Employment and Economic Development Offices totalled 663,000, up 144,700 on the previous year. Of the jobseekers, 339,600 were men and 323,400 were women. Compared to the situation a year ago, the number of men increased by 79,000 and the number of women by 65,600.

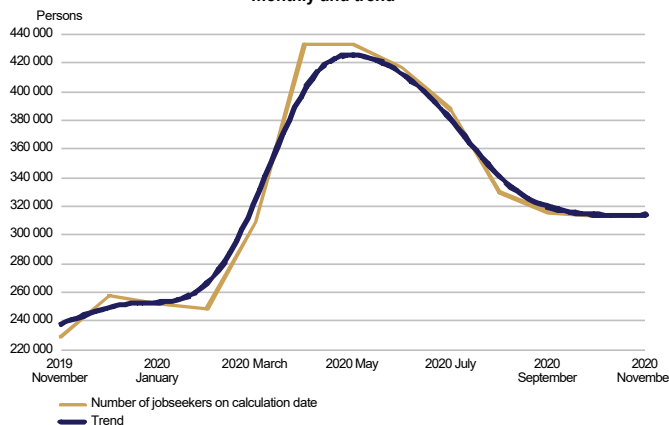
Of the jobseekers, 211,100 were employed, 191,600 of them were on the open labour market and 19,400 were employed through the services of the employment and economic development administration. The number of jobseekers on the open labour market increased by 50,400 from November a year earlier. The number of jobseekers outside the labour force was 119,000, of whom 29,500 were in services promoting employment and 67,200 in training. Of the jobseekers, 314,500 were unemployed jobseekers, which is 86,000 more than the year before. In November, 58,000 of unemployed jobseekers were fully laid off, which is 800 more than in October. The number of people fully laid off increased by 43,400 from November a year earlier. Furthermore, jobseekers on a reduced working week numbered 18,400, representing an increase of 12,400 from the year before.





## Unemployed jobseekers

**UNEMPLOYED JOBSEEKERS**  
monthly and trend

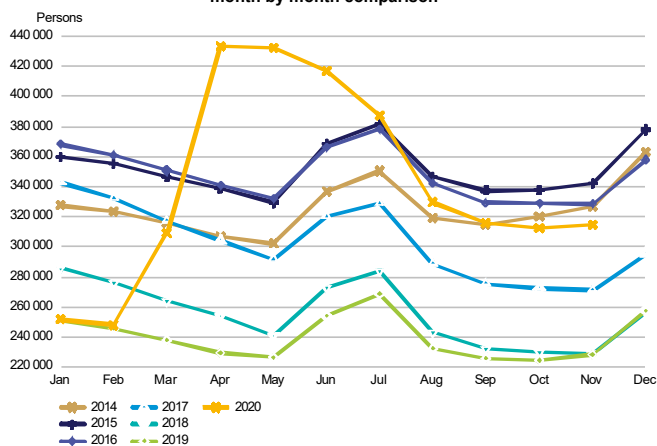


### Increase in unemployed jobseekers in November

At the end of November, the number of unemployed jobseekers registered at the Employment and Economic Development Offices totalled 314,500, up 86,000 on the previous year. Compared with October, the number of unemployed jobseekers increased by 1,800. The number of new job searches among unemployed jobseekers totalled 15,400, up 400 from November a year ago. In November, the number of starting periods of unemployment totalled 50,300, representing an increase of 4,500 on the year before. The number of starting periods of unemployment decreased by 7,600 from October. The number of starting periods is always greater than the number of job searches because new unemployment periods are also registered from the existing groups of jobseekers.

The number of foreign citizens among unemployed jobseekers totalled 32,300, up 9,400 from November a year ago. Of these foreign unemployed jobseekers, EU/EEA citizens accounted for 10,600 at the end of November, up 4,000 from the year before.

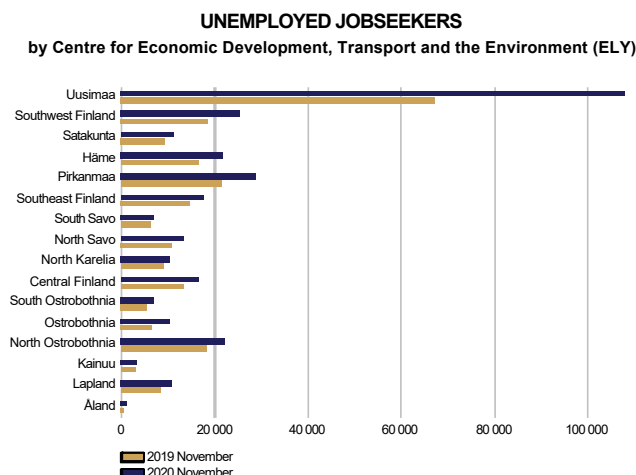
**UNEMPLOYED JOBSEEKERS**  
month by month comparison



In November, 58,000 of unemployed jobseekers were fully laid off, which is 800 more than in October. The number of people fully laid off increased by 43,400 from November a year earlier. In November, the number of job searches among the fully laid off people totalled 5,300, representing an increase of 2,500 on the year before. The number of starting periods of full lay-offs was 19,800, up 11,000 from November a year ago. The number of starting periods of full lay-offs decreased by 4,300 from October. The number of people fully laid off increased in all occupational groups; the greatest increases were in the groups of service and sales workers (10,500), 'unknown' (8,200), craft and related trades workers (6,000), and professionals (4,400).



## Unemployed jobseekers by region



### Unemployment increased in the areas of all ELY Centres

Compared to the same period in the previous year, the number of unemployed jobseekers increased in November in the areas of all Centres for Economic Development, Transport and the Environment (ELY Centres); the most in Uusimaa (61%), Ostrobothnia (55%), Southwest Finland (36%) and Pirkanmaa (34%). The number of unemployed jobseekers increased the least in Kainuu (10%), South Savo (12%), North Karelia (16%) and Southeast Finland (19%). In the Åland Islands, the number of unemployed jobseekers increased by 153 per cent. Compared with October, the number of unemployed jobseekers decreased in the areas of three ELY Centres; in Pirkanmaa (-1%), Uusimaa (-1%) and Southwest Finland (-1%). From October, the number of unemployed jobseekers increased the most in Kainuu (7%), North Savo (4%), Southeast Finland (3%) and North Karelia (3%).

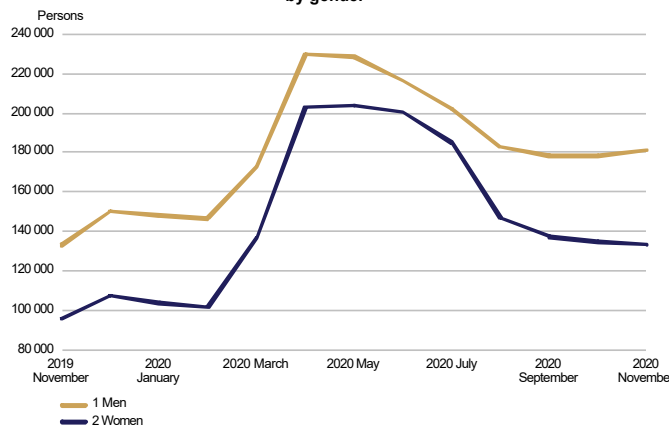
### Unemployed jobseekers and jobs vacant in Employment and Economic Development Office by ELY centre

ELY centre	Nov			Change		Of the Unemployed		Nov			Change	
	2020	Oct 2020	Nov 2019	Nov 2020	Nov 2019	Nov 2020 unemployed jobseekers fully laid off	jobseekers' percentage of the workforce	2020	Oct 2020	Nov 2019	Nov 2020	Nov 2019
ELY centre	Unemployed jobseekers							Jobs vacant				
					%		%					%
Uusimaa	107 867	108 868	67 035	40 832	61	22 969	12,4	13 631	14 018	18 450	-4 819	-26
Southwest Finland	25 124	25 261	18 518	6 606	36	5 286	11,0	4 087	3 904	3 936	151	4
Satakunta	11 138	11 119	9 237	1 901	21	2 099	11,4	1 165	1 083	1 428	-263	-18
Häme	21 709	21 241	16 319	5 390	33	3 399	12,8	2 418	2 454	2 479	-61	-2
Pirkanmaa	28 891	29 325	21 511	7 380	34	5 450	11,8	4 583	4 394	4 793	-210	-4
Southeast Finland	17 486	16 940	14 633	2 853	19	2 332	13,0	1 642	1 629	1 689	-47	-3
South Savo	6 948	6 782	6 189	759	12	893	11,2	1 095	1 046	950	145	15
North Savo	13 088	12 587	10 668	2 420	23	2 424	11,8	2 460	2 312	2 718	-258	-9
North Karelia	10 396	10 079	8 960	1 436	16	1 282	14,7	1 014	937	739	275	37
Central Finland	16 547	16 195	13 306	3 241	24	1 849	13,2	1 782	1 868	1 784	-2	0
South Ostrobothnia	6 989	6 947	5 570	1 419	25	1 341	8,3	1 481	1 569	1 755	-274	-16
Ostrobothnia	10 261	10 164	6 621	3 640	55	2 806	8,9	1 411	1 545	1 478	-67	-5
North Ostrobothnia	22 173	21 617	18 137	4 036	22	3 238	11,9	3 424	3 727	3 902	-478	-12
Kainuu	3 336	3 120	3 044	292	10	407	10,6	884	815	603	281	47
Lapland	10 819	10 660	8 158	2 661	33	1 672	13,4	1 701	1 806	2 066	-365	-18
Åland	1 359	1 407	538	821	153	335	8,8	137	110	207	-70	-34
Abroad	399	399	135	264	196	188	.	1 503	1 482	2 151	-648	-30
WHOLE COUNTRY	314 532	312 713	228 581	85 951	38	57 970	12,0	44 418	44 699	51 128	-6 710	-13



## Unemployed jobseekers by gender and age-group

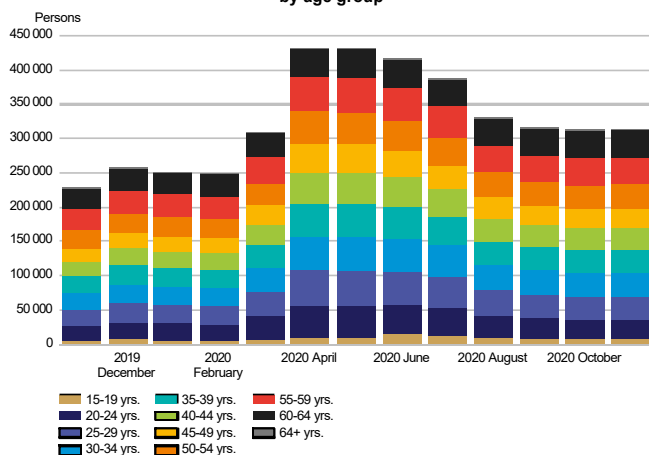
**UNEMPLOYED JOBSEEKERS  
by gender**



### Unemployment increased more among men than women

Of the unemployed jobseekers, 181,300 (58%) were men and 133,200 (42%) were women, indicating an increase of 3,200 for men and a decrease of 1,400 for women from the figures for October. Compared with November a year ago, unemployment increased by 48,500 (37%) among men and by 37,500 (39%) among women.

**UNEMPLOYED JOBSEEKERS  
by age group**



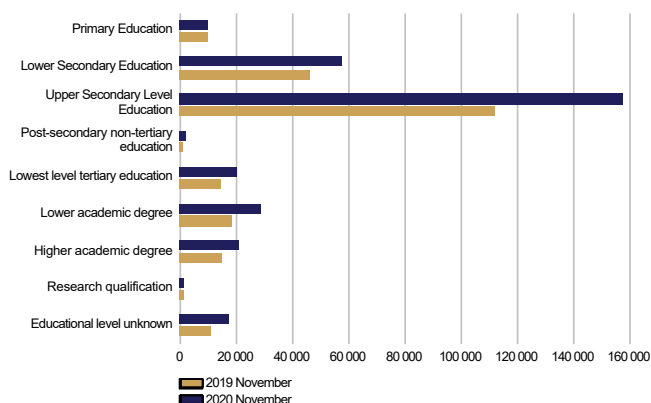
### Unemployment increased in all age groups

At the end of November, unemployed jobseekers aged under 25 numbered 36,000, representing an increase of 9,400 from November a year ago. Youth unemployment decreased from October by 300. For those under 20, the number of unemployed was 7,600. Among those over 50, the number of unemployed was 115,900, representing an increase of 28,000 on the year before. Among those over 55, the number of unemployed was 81,100, representing an increase of 19,300 on the year before. Proportionally, unemployment increased the most in the age group 25–44 (on average 43%) and those over 64 (84%). Compared with October, unemployment decreased slightly in three age groups, the most among those aged under 20 (-1%) and those aged 20–24 (-1%).



## Unemployed jobseekers by levels of education and occupational group

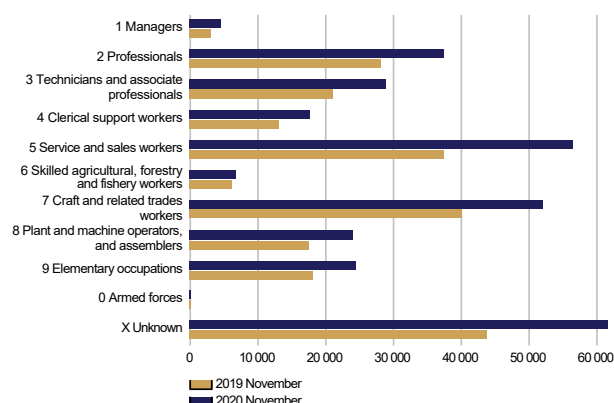
UNEMPLOYED JOBSEEKERS  
by level of education



### Unemployment increased at all levels of education

Examined by level of education, unemployment increased from November last year at all levels of education; the increase was greatest among those with post-secondary non-tertiary education (93%), level of education 'unknown' (59%), lower-degree level tertiary education (55%) and higher-degree level tertiary education (41%).

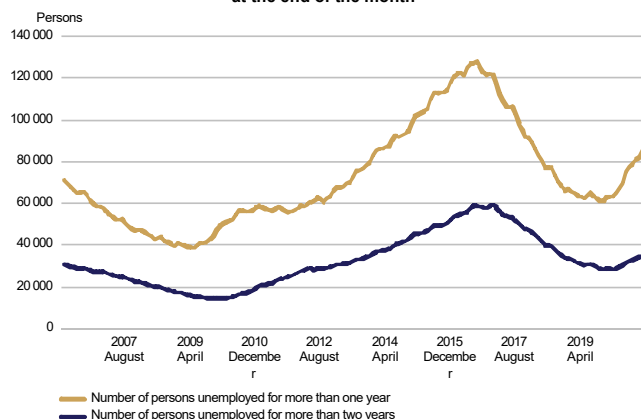
UNEMPLOYED JOBSEEKERS  
by occupational group



### Unemployment increased in all occupational groups

Examined by occupation, unemployment increased in all groups from November last year; the most in the groups of service and sales workers (19,100), category 'unknown' (18,000) and craft and related trades workers (12,000). Unemployment increased the least in the groups of armed forces (40), skilled agricultural, forestry and fishery workers (400), and managers (1,300).

LONG-TERM UNEMPLOYED  
at the end of the month

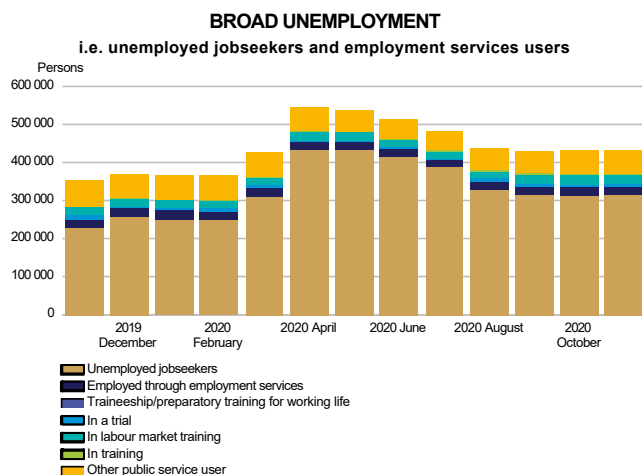


### Increase in long-term unemployment

At the end of November, the number of long-term unemployed who had been unemployed without interruption for more than a year amounted to 85,300, up 24,200 on the previous year. Of the long-term unemployed, 51,100 were men and 34,200 were women. The number of men increased by 14,400 (39%) from the previous year and the number of women by 9,700 (40%). Long-term unemployed who had been unemployed without interruption for more than two years numbered 34,900, which is 6,600 more than a year ago.



## Services



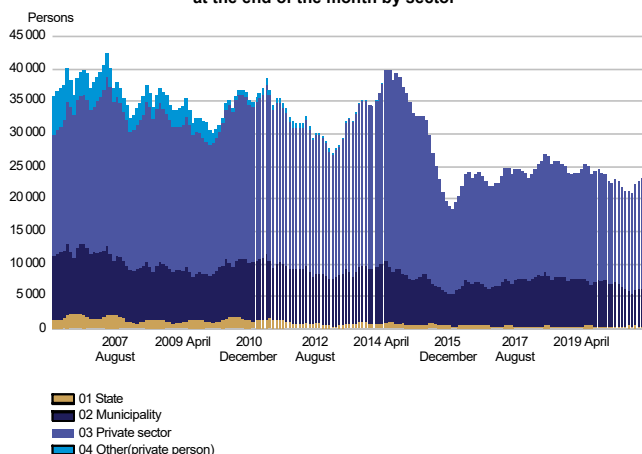
### Decrease in the number of persons covered by services

At the end of November, the number of persons covered by services included in the activation rate amounted to 120,200, down 5,000 on the previous year. Compared with October, the number of persons covered by such services increased by 1,600. The activation rate at the end of November was 27.6%, which is 7.8 percentage points lower than a year earlier. In all, 4.4% of the labour force were covered by these services.

Of those covered by services, the number of men was 57,200, down 2,700 on the previous year. The number of women covered by these services was 63,000, down 2,200 on the previous year.

Broad unemployment, or the total number of unemployed jobseekers and those covered by services, was 434,700 at the end of November. This is 81,000 more than a year earlier. The increase in broad unemployment was mainly due to an increase in the number of unemployed jobseekers.

### EMPLOYED THROUGH EMPLOYMENT SERVICES at the end of the month by sector



### The number of placements fell in local government

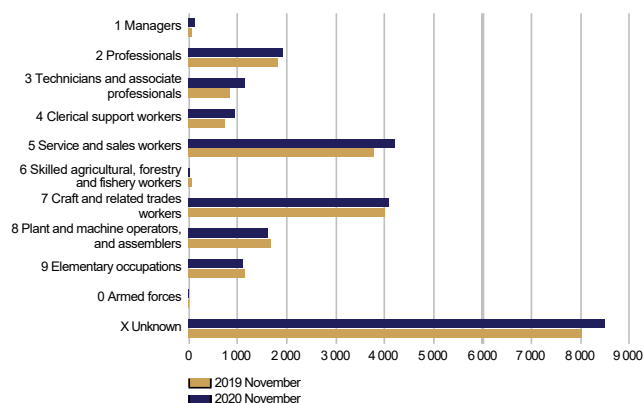
At the end of November, the number of persons claiming pay subsidies, employed by the State or receiving start-up grants totalled 23,400, which is 400 less than the year before. Of those employed, 2% were in government jobs, 25% in local government jobs and 73% in the private sector. Since November last year, the number of placements has decreased by 17% in local government jobs and increased by 11% in government jobs and by 5% in the private sector. Of those employed, 51% were men. Placements for men decreased by 200, and those for women by 100 from the previous year.





## Labour market training, training and self-motivated studies

**PERSONS IN LABOUR MARKET TRAINING**  
in target profession at the end of the month

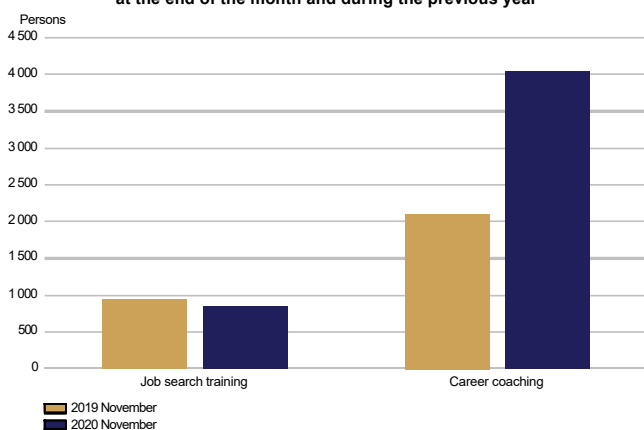


### Increase in the number of persons in labour market training

At the end of November, labour market training was attended by 23,600 students, up 1,500 on the previous year. Of the students, 11,200 were men and 12,400 were women. The number of men increased by 400, and the number of women by 1,100 from November last year. During November, 5,200 new students began labour market training, representing an increase of 800 on the year before.

Based on target occupation, the largest subgroup within the category of 'unknown' consisted of 7,600 people in integration training, which is 500 more than the year before.

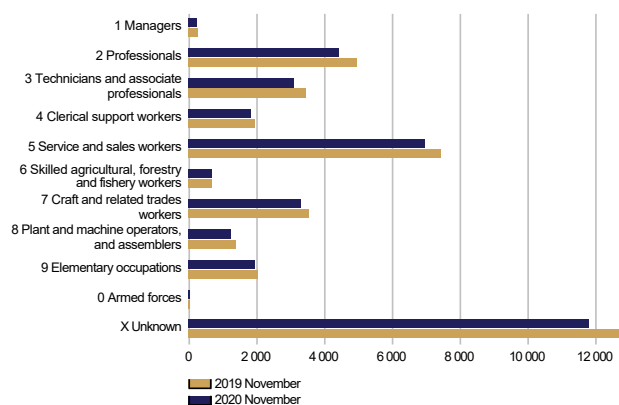
**IN TRAINING**  
at the end of the month and during the previous year



### The number of persons in training increased

At the end of November, 4,900 persons were in training, which is 1,900 more than the year before. Of those in training, 2,500 were men and 2,400 women. Career coaching was provided to 4,000 participants, which is 1,900 more than a year earlier. The number of participants in job search training was 900, representing a decrease of 100 on the year before.

**IN SELF-MOTIVATED STUDIES**  
in person's profession at the end of the month



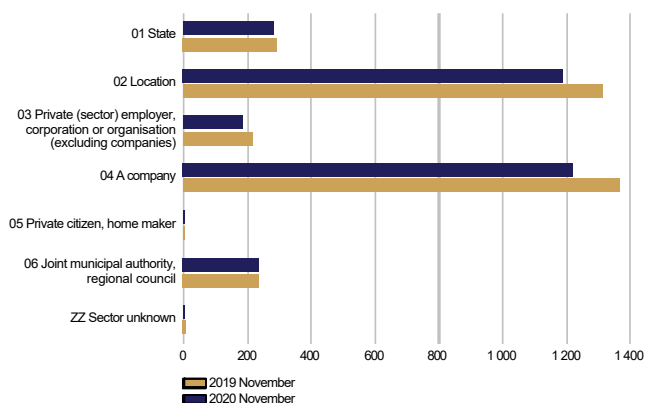
### The number of people in self-motivated study decreased from the previous year

Self-motivated studies supported by unemployment benefits were attended by a total of 35,500 people, representing a decrease of 2,900 on the year before. The number of men receiving unemployment benefits for studies was 14,400, down 1,500 on the previous year. Among women, the number was 21,100, representing a decrease of 1,400 on the year before. Occupation was undetermined in case of 10,400 persons in the group of 'unknown', down 700 on the previous year.



## Job alternation, rehabilitative work and trials

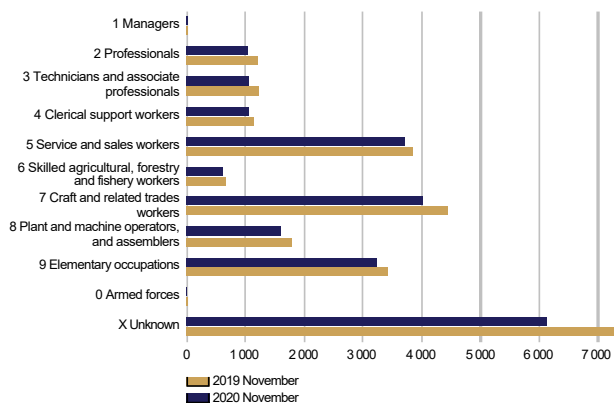
**AS A JOB ALTERNATION SUBSTITUTE**  
at the end of the month and during the previous year by sector



### The number of job alternation substitutes decreased

A total of 3,100 persons were job alternation substitutes at the end of November, which is 300 less than a year earlier. Of the substitutes, 1,100 were men and 2,000 were women. The number of men decreased by 100 and the number of women by 200 compared to the previous year.

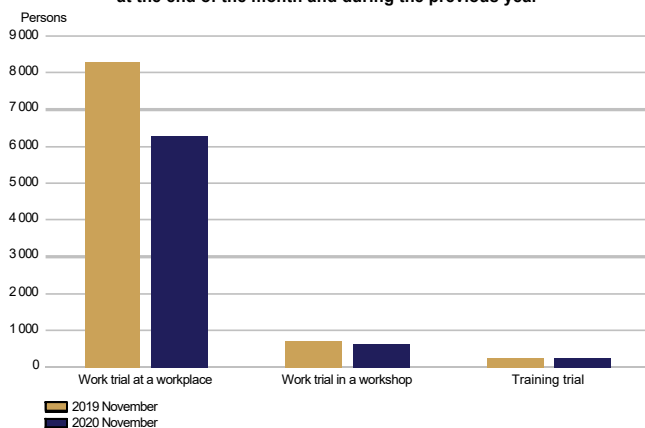
**REHABILITATIVE WORK ACTIVITIES**  
at the end of the month and during the previous year



### Fewer participants in rehabilitative work activities than in the previous year

A total of 22,400 persons participated in rehabilitative work activities at the end of November, which is 2,700 less than a year earlier. Of the participants 12,600 were men and 9,800 were women. The number of men decreased by 1,400 and the number of women by 1,200 from the previous year.

**IN TRIALS**  
at the end of the month and during the previous year



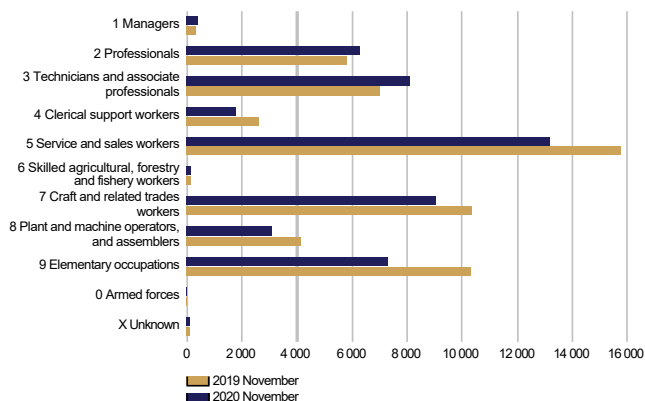
### Participation in work and training trials decreased

Work and training trials had a total of 7,200 participants at the end of November, which is 2,100 less than the year before. Of the participants 3,400 were men and 3,800 were women. The number of men decreased by 800 and the number of women by 1,300 from the previous year.



## Jobs vacant

**NEW JOB VACANCIES**  
during the month and during the previous year



### Decrease in the number of new vacancies

The number of new vacancies reported to Employment and Economic Development Offices during November totalled 49,400, which is 7,200 less than in November last year. In all, the number of unfilled vacancies at Employment and Economic Development Offices in November amounted to 91,400, which is 19,500 less than a year ago. A total of 7,200 of these vacancies were filled during November, 2,500 of them through Employment and Economic Development Offices. A total of 38,500 vacancies were closed for applications because the application period had ended or because there was a sufficient number of applicants. In addition, a total of 2,600 vacancies were cancelled and 1,300 vacancies could not be filled. The number of vacancies remaining unfilled at the end of November was 44,400, down 6,700 on the previous year.

The number of new vacancies had decreased in seven occupational groups. The number of new vacancies had decreased the most in the groups of elementary occupations (-3,000), service and sales workers (-2,600), craft and related trades workers (-1,300), and plant and machine operators, and assemblers (-1,000). The number of new vacancies had increased the most in the groups of technicians and associate professionals (1,100) and professionals (500).



## Summary table

EMPLOYMENT SITUATION AT THE END OF 2020 NOVEMBER (I) AND  
ACTIVITIES OF EMPLOYMENT AND ECONOMIC DEVELOPMENT OFFICES DURING NOVEMBER (II)  
WHOLE COUNTRY

I EMPLOYMENT SITUATION AT THE END OF MONTH	Nov-20	Nov-19	CHANGE NUMBER	CHANGE %
<b>A. JOBSEEKERS</b>				
1. Unemployed jobseekers	314 532	228 581	85 951	37,6
of whom fully laid off	57 970	14 616	43 354	296,6
2. On reduced working week	18 414	6 019	12 395	205,9
3. Those who have work	211 090	162 383	48 707	30,0
of whom in the general labour market	191 643	141 200	50 443	35,7
of whom employed through employment services	19 447	21 183	-1 736	-8,2
4. Persons outside the labour force	118 952	121 354	-2 402	-2,0
of whom in services promoting employment	29 502	33 747	-4 245	-12,6
of whom in training	67 232	63 916	3 316	5,2
<b>1-4 Total of jobseekers</b>	<b>662 988</b>	<b>518 337</b>	<b>144 651</b>	<b>27,9</b>
<b>B. LABOUR DEMAND</b>				
1. Jobs vacant	44 418	51 128	-6 710	-13,1
of those notified for over a month	16 357	17 823	-1 466	-8,2
of those notified for over 2 months	10 942	10 625	317	3,0
<b>C. PARTICIPATING IN SERVICES</b>				
1. Employed by the State	487	439	48	10,9
2. Employed by municipalities	5 744	6 932	-1 188	-17,1
3. Employed by the private sector	17 134	16 388	746	4,6
<b>1-3 Total number of employed people</b>	<b>23 365</b>	<b>23 759</b>	<b>-394</b>	<b>-1,7</b>
4. Labour market training	23 650	22 108	1 542	7,0
5. Training	4 896	3 040	1 856	61,1
6. Engaged in work/training trials	7 189	9 282	-2 093	-22,5
7. As a job alternation substitute	3 120	3 429	-309	-9,0
8. Rehabilitative work	22 414	25 095	-2 681	-10,7
9. Self-motivated studies supported by unemployment benefit	35 530	38 435	-2 905	-7,6
<b>1-9 Total number of people participating in services</b>	<b>120 164</b>	<b>125 148</b>	<b>-4 984</b>	<b>-4,0</b>
<b>D. STRUCTURE OF UNEMPLOYMENT</b>				
1. Unemployed women	133 238	95 770	37 468	39,1
2. Unemployed men	181 294	132 811	48 483	36,5
3. Under 25 years old	36 037	26 648	9 389	35,2
4. Over 50 years old	115 883	87 915	27 968	31,8
5. Unemployed over a year	85 286	61 106	24 180	39,6
6. Foreign unemployed	32 283	22 837	9 446	41,4
<b>E. UNEMPLOYMENT SECURITY</b>				
1. Unemployed members of employees' unemployment funds	141 096	85 800	55 296	64,4
<b>II EMPLOYMENT SITUATION DURING THE MONTH</b>				
1. Unemployed jobseekers	349 859	259 462	90 397	34,8
2. Other jobseekers	339 127	280 724	58 403	20,8
<b>1-2 Total number of jobseekers</b>	<b>688 986</b>	<b>540 186</b>	<b>148 800</b>	<b>27,5</b>
3. Vacancies during a month	91 354	110 894	-19 540	-17,6
New vacancies during a month	49 401	56 613	-7 212	-12,7
Vacancies filled during a month	7 184	9 658	-2 474	-25,6
of those filled with job-seekers at the Employment Service	2 518	3 698	-1 180	-31,9
Vacancies application period ended or sufficient number of applicants	38 505	51 720	-13 215	-25,6
Vacancies cancelled or could not be filled	3 873	2 686	1 187	44,2
4. Started spell of unemployment	50 294	45 822	4 472	9,8
5. Completed spell of unemployment	44 868	36 988	7 880	21,3
6. New jobs found through employment services	2 774	2 768	6	0,2
7. New entrants to labour market training	5 208	4 413	795	18,0





## Foreigners' summary table

FOREIGNERS' EMPLOYMENT SITUATION AT THE END OF 2020 NOVEMBER (I) AND  
ACTIVITIES OF EMPLOYMENT AND ECONOMIC DEVELOPMENT OFFICES DURING NOVEMBER (II)  
WHOLE COUNTRY

I EMPLOYMENT SITUATION AT THE END OF MONTH	Nov-20	Nov-19	CHANGE NUMBER	CHANGE %
<b>A. JOBSEEKERS</b>				
1. Unemployed jobseekers	32 283	22 837	9 446	41,4
of whom fully laid off	5 563	1 323	4 240	320,5
2. On reduced working week	1 109	202	907	449,0
3. Those who have work	19 654	16 617	3 037	18,3
of whom in the general labour market	18 018	14 914	3 104	20,8
of whom employed through employment services	1 636	1 703	-67	-3,9
4. Persons outside the labour force	31 951	32 574	-623	-1,9
of whom in services promoting employment	3 014	3 656	-642	-17,6
of whom in training	26 453	26 323	130	0,5
<b>1-4 Total of jobseekers</b>	<b>84 997</b>	<b>72 230</b>	<b>12 767</b>	<b>17,7</b>
<b>C. PARTICIPATING IN SERVICES</b>				
1. Employed by the State	...	...	...	...
2. Employed by municipalities	401	441	-40	-9,1
3. Employed by the private sector	1 325	1 305	20	1,5
<b>1-3 Total number of employed people</b>	<b>1 730</b>	<b>1 749</b>	<b>-19</b>	<b>-1,1</b>
4. Labour market training	9 957	9 480	477	5,0
5. Training	294	249	45	18,1
6. Engaged in work/training trials	1 357	1 882	-525	-27,9
7. As a job alternation substitute	50	62	-12	-19,4
8. Rehabilitative work	1 556	1 711	-155	-9,1
9. Self-motivated studies supported by unemployment benefit	15 605	16 917	-1 312	-7,8
<b>1-9 Total number of people participating in services</b>	<b>30 549</b>	<b>32 050</b>	<b>-1 501</b>	<b>-4,7</b>
<b>D. STRUCTURE OF UNEMPLOYMENT</b>				
1. Unemployed women	15 197	11 471	3 726	32,5
2. Unemployed men	17 086	11 366	5 720	50,3
3. Under 25 years old	2 174	1 565	609	38,9
4. Over 50 years old	8 314	6 097	2 217	36,4
5. Unemployed over a year	6 844	4 516	2 328	51,6
<b>E. UNEMPLOYMENT SECURITY</b>				
1. Unemployed members of employees' unemployment funds	7 727	4 028	3 699	91,8
<b>II EMPLOYMENT SITUATION DURING THE MONTH</b>				
1. Unemployed jobseekers	36 257	26 957	9 300	34,5
2. Other jobseekers	50 792	47 316	3 476	7,3
<b>1-2 Total number of jobseekers</b>	<b>87 049</b>	<b>74 273</b>	<b>12 776</b>	<b>17,2</b>
4. Started spell of unemployment	4 888	5 451	-563	-10,3
5. Completed spell of unemployment	4 579	4 391	188	4,3
6. New jobs found through employment services	228	205	23	11,2
7. New entrants to labour market training	1 692	1 705	-13	-0,8



## Regional table

UNEMPLOYED JOBSEEKERS AND JOBS VACANT BY ELY CENTRE AT THE END OF 2020 NOVEMBER  
WHOLE COUNTRY

ELY centre	Workforce		Unemployed jobseekers						Disabled		Jobs vacant
		% of workforce	Total	Men	Women	Under 20 years old	Under 25 years old	Over 50 years old	Unemployed over a year	and chron. ill	
Uusimaa	870 203	12,4	107 867	58 847	49 020	2 043	10 635	36 771	31 138	8 125	13 631
Southwest Finland	228 666	11,0	25 124	14 541	10 583	582	2 826	9 149	5 958	2 718	4 087
Satakunta	97 967	11,4	11 138	6 839	4 299	303	1 255	4 769	2 914	1 264	1 165
Häme	170 007	12,8	21 709	12 568	9 141	610	2 535	8 746	6 304	3 028	2 418
Pirkanmaa	244 976	11,8	28 891	16 647	12 244	696	3 602	9 524	6 774	2 719	4 583
Southeast Finland	134 123	13,0	17 486	10 220	7 266	573	2 211	7 364	4 570	1 955	1 642
South Savo	61 786	11,2	6 948	4 244	2 704	172	777	3 120	1 907	1 146	1 095
North Savo	110 670	11,8	13 088	8 247	4 841	289	1 492	5 357	4 257	1 819	2 460
North Karelia	70 953	14,7	10 396	6 346	4 050	228	1 155	4 543	3 303	1 259	1 014
Central Finland	125 827	13,2	16 547	9 600	6 947	518	2 472	5 950	5 116	1 634	1 782
South Ostrobothnia	84 532	8,3	6 989	4 216	2 773	225	944	2 683	1 214	1 068	1 481
Ostrobothnia	115 591	8,9	10 261	6 255	4 006	269	1 190	3 706	2 225	1 126	1 411
North Ostrobothnia	186 791	11,9	22 173	13 177	8 996	726	3 229	7 432	6 117	2 476	3 424
Kainuu	31 604	10,6	3 336	2 097	1 239	83	358	1 637	764	479	884
Lapland	81 005	13,4	10 819	6 436	4 383	297	1 193	4 520	2 504	1 132	1 701
Åland	15 421	8,8	1 359	749	610	31	142	501	172	48	137
Abroad	0	0,0	399	264	135	...	19	111	48	...	1 503
Total	2 630 122	12,0	314 532	181 294	133 238	7 647	36 037	115 883	85 286	32 000	44 418



## Information about the website

On this website you will find the latest statistics from the Ministry of Economic Affairs and Employment's monthly Employment Bulletin. You can access a .pdf version of the current and previous months' Employment Bulletin by following the link on the right. The Employment Bulletin is based on the data from the MEAE's Employment Service Statistics. The Ministry of Economic Affairs and Employment compiles statistics on the clients of the Employment and economic development offices (TE offices), including registered job-seekers, labour market policy services, and job vacancies reported to TE offices by employers. The data is collected from the customer service registry (URA) used by the TE offices. This means that the data used by MEAE Employment Service Statistics is completely registry-based. The statistical data covers all persons, services, and open vacancies in the aforementioned groups, as separately defined in the registry by the classifications and variables for the statistical period in question.

Owing to seasonal variations, the Employment Bulletin always includes a comparison with the corresponding month in the previous year. The descriptors used in the Bulletin are also available in a table format. The Employment Bulletins are published at the end of the subsequent calendar month. The official date of publication is announced in advance.

The following symbols have been used:

. Category not applicable

... Data subject to secrecy

### Links:

- **Employment Service Statistics online:**  
<https://www.tem.fi/en/employment-bulletin-and-employment-service-statistics>
- **Employment Service Statistics, Description and Quality Description**  
<https://www.tem.fi/en/release-dates-of-statistics-and-description-and-quality-description>
- **You can access key information from MEAE's Employment Service Statistics by visiting the Statistics Finland's StatFin database:**  
[https://pxnet2.stat.fi/PXWeb/pxweb/en/StatFin/StatFin\\_\\_tym\\_\\_tyonv/](https://pxnet2.stat.fi/PXWeb/pxweb/en/StatFin/StatFin__tym__tyonv/)
- **The Employment Service Statistics data is also available from the MEAE Publications page (only available in Finnish).**  
<https://www.tem.fi/tyopoliittinen-aikakauskirja>
- **Joint monthly report from MEAE and Statistics Finland**  
[https://tilastokeskus.fi/til/tyti/tie\\_en.html](https://tilastokeskus.fi/til/tyti/tie_en.html)
- **Comparison between the statistics of Statistics Finland and the Ministry of Economic Affairs and Employment**  
[https://www.stat.fi/til/tyti/tyti\\_2019-09-13\\_men\\_001\\_en.html](https://www.stat.fi/til/tyti/tyti_2019-09-13_men_001_en.html)
- **Comparison between the Job Vacancy Survey of Statistics Finland and Employment Service Statistics of the Ministry of Economic Affairs and Employment**  
[https://tilastokeskus.fi/til/atp/atp\\_2017-01-02\\_men\\_001.html](https://tilastokeskus.fi/til/atp/atp_2017-01-02_men_001.html)

### Instructions for referencing:

Official Statistics of Finland (OSF): Ministry of Economic Affairs and Employment / Employment Service Statistics. ISSN 1797-3694 201Y:MM, Employment Bulletin, MONTH 201Y. Helsinki: Ministry of Economic Affairs and Employment (date of reference). Available at:  
<https://www.temtyollisyyskatsaus.fi>



## Contact information

### **Ministry of Economic Affairs and Employment**

Employment and Well-Functioning Markets Department

Kaisa-Mari Kuusela, +358 29 504 8294

Petri Syvänen, +358 29 504 8050

Hilkka Kattelus, +358 29 504 8047

E-mail: [firstname.lastname\(at\)tem.fi](mailto:firstname.lastname(at)tem.fi) /  
[tyonvalitystilasto\(at\)tem.fi](mailto:tyonvalitystilasto(at)tem.fi)

<https://www.temtyollisyyskatsaus.fi>

ISSN: 1797-3694 (online publication)

