



Employment Bulletin

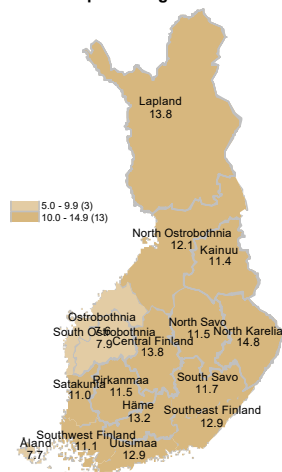
April 2021



Ministry of Economic Affairs
and Employment of Finland

In April, 318,400 unemployed jobseekers

Unemployed jobseekers' percentage of the workforce by ELY centre



At the end of April, a total of 318,400 unemployed jobseekers were registered at the Employment and Economic Development Offices and municipalities participating in the local government pilots on employment. This is 114,600 less than a year earlier, but 88,800 more than in April two years ago. The number of unemployed jobseekers decreased by 13,100 from the previous month. Unemployed jobseekers accounted for 12.1% of the labour force, which is 4.4 percentage points less than the year before. The figures are from the Employment Service Statistics of the Ministry of Economic Affairs and Employment.

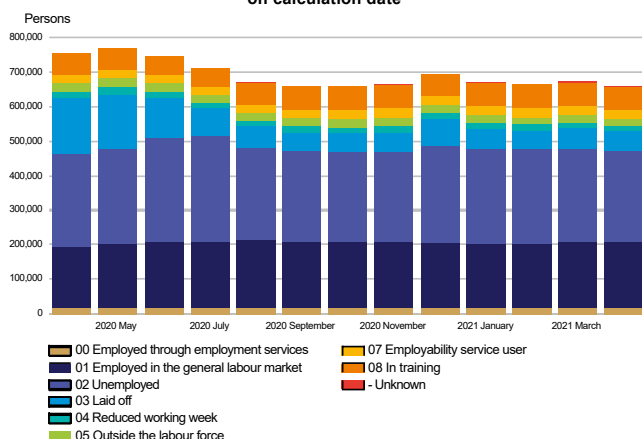
Trends:

- Total number of jobseekers decreased by 97,000
- The number of unemployed jobseekers decreased by 115,000 from the previous year
- The number of people fully laid off decreased by 110,000
- Services included in the activation rate had 6,000 more people than a year ago
- 26,000 new job vacancies more compared to last year



All jobseekers

Jobseekers by group
on calculation date



The total number of jobseekers decreased

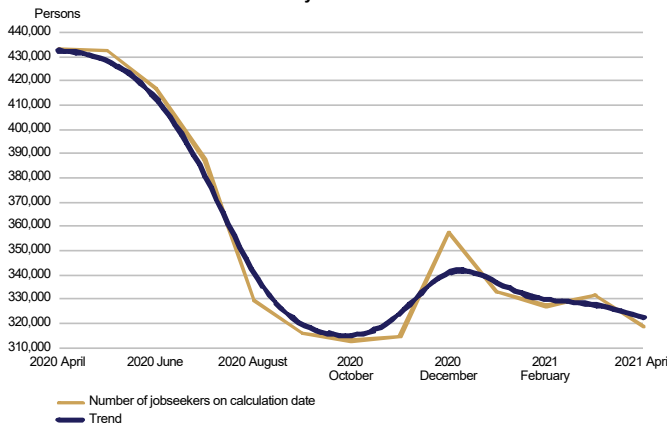
At the end of April, the number of jobseekers registered at the Employment and Economic Development Offices and municipalities participating in the local government pilots on employment totalled 657,300, down 97,400 on the previous year. Of the jobseekers, 335,500 were men and 321,900 were women. Compared to the situation a year ago, the number of men decreased by 39,500 and the number of women by 57,900. Of the jobseekers, 230,900 were customers of municipalities participating in the local government pilots on employment.

Of the jobseekers, 209,000 were employed, 189,100 of them were on the open labour market and 19,800 were employed through the services organised by the employment and economic development administration and local government pilots on employment. The number of jobseekers on the open labour market increased by 14,300 from April a year earlier. The number of jobseekers outside the labour force was 113,700, of whom 26,500 were in services promoting employment and 66,900 in training. Of the jobseekers, 318,400 were unemployed jobseekers, which is 114,600 less than the year before. In April, 53,900 of unemployed jobseekers were fully laid off, which is 8,800 less than in March. The number of people fully laid off decreased by 109,800 from April a year earlier. Furthermore, jobseekers on a reduced working week numbered 16,300, representing a decrease of 4,000 from the year before.



Unemployed jobseekers

UNEMPLOYED JOBSEEKERS
monthly and trend

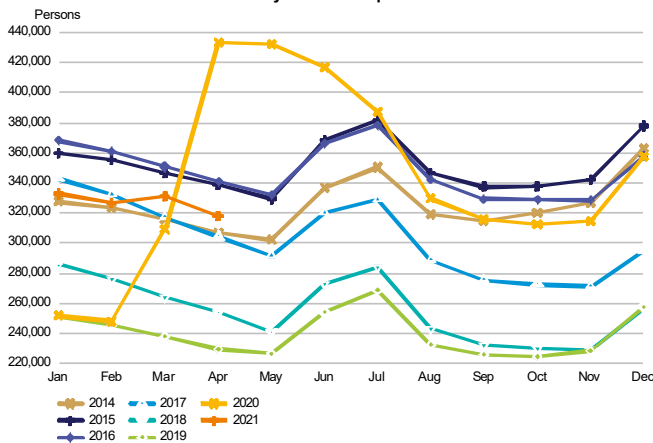


Decrease in unemployed jobseekers in April

At the end of April, the number of unemployed jobseekers registered at the Employment and Economic Development Offices and municipalities participating in the local government pilots on employment totalled 318,400, down 114,600 on the previous year. Compared with March, the number of unemployed jobseekers decreased by 13,100. Of the unemployed jobseekers, 158,600 were customers of municipalities participating in the local government pilots on employment. The number of new job searches among unemployed jobseekers totalled 11,000, down 38,000 from April a year ago. In April, the number of starting periods of unemployment totalled 38,300, representing a decrease of 135,300 on the year before. The number of starting periods of unemployment decreased by 17,500 from March. The number of starting periods is always greater than the number of job searches because new unemployment periods are also registered from the existing groups of jobseekers.

The number of foreign citizens among unemployed jobseekers totalled 34,800, down 5,700 from April a year ago. Of these foreign unemployed jobseekers, EU/EEA citizens accounted for 11,400 at the end of April, down 1,900 from the year before.

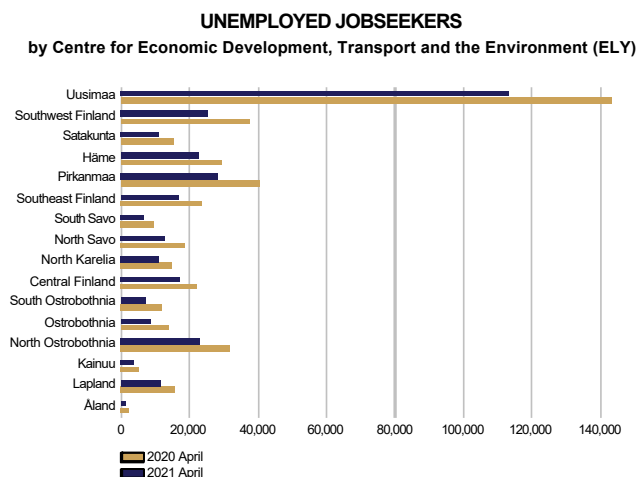
UNEMPLOYED JOBSEEKERS
month by month comparison



In April, 53,900 of unemployed jobseekers were fully laid off, which is 8,800 less than in March. The number of people fully laid off decreased by 109,800 from April a year earlier. In April, the number of job searches among the fully laid off people totalled 3,500, representing a decrease of 23,900 on the year before. The number of starting periods of full lay-offs was 13,500, down 112,600 from April a year ago. The number of starting periods of full lay-offs decreased by 15,200 from March. The number of fully laid off people decreased in all groups; the most in the groups of service and sales workers (-30,300), 'unknown' (-23,100), technicians and associate professionals (-11,600), professionals (-11,500) and craft and related trades workers (-11,100).



Unemployed jobseekers by region



Unemployment decreased in the areas of all ELY Centres

Compared to the same period in the previous year, the number of unemployed jobseekers decreased by more than 20% in the areas of all Centres for Economic Development, Transport and the Environment (ELY Centres) in April; the most in South Ostrobothnia (-41%), Ostrobothnia (-37%) and Southwest Finland (-32%). The number of unemployed jobseekers decreased the least in Uusimaa (-21%), Central Finland (-22%) and Häme (-22%). In Åland, the number of unemployed jobseekers fell by 39%. Compared to March, the number of unemployed jobseekers also decreased in the areas of all ELY Centres; the most in South Ostrobothnia (-8%), Southeast Finland (-8%), South Savo (-7%) and Satakunta (-7%). The decrease from March was the greatest in Åland, -20%.

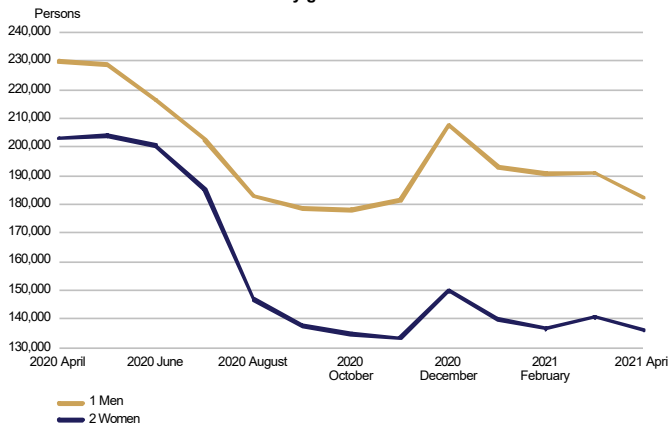
Unemployed jobseekers and jobs vacant in Employment and Economic Development Office by ELY centre

ELY centre	Unemployed jobseekers			Change		Of the Unemployed jobseekers' percentage fully laid off		Jobs vacant			Change	
	Apr 2021	Mar 2021	Apr 2020	Apr 2021	Apr 2020	Apr 2021	Mar 2021	Apr 2021	Mar 2021	Apr 2021	Apr 2020	
Uusimaa	113,331	116,025	143,261	-29,930	-21	23,296	12.9	20,267	20,445	13,310	6,957	52
Southwest Finland	25,340	26,290	37,325	-11,985	-32	4,685	11.1	6,965	7,020	4,824	2,141	44
Satakunta	10,694	11,503	15,233	-4,539	-30	1,563	11.0	2,413	2,676	1,687	726	43
Häme	22,548	23,553	29,020	-6,472	-22	3,385	13.2	4,977	4,699	3,027	1,950	64
Pirkanmaa	28,354	29,780	40,265	-11,911	-30	4,464	11.5	7,395	8,504	4,410	2,985	68
Southeast Finland	16,640	18,070	23,321	-6,681	-29	2,408	12.9	2,630	2,857	1,849	781	42
South Savo	6,646	7,184	9,105	-2,459	-27	880	11.7	2,419	2,927	1,459	960	66
North Savo	12,945	13,483	18,690	-5,745	-31	1,928	11.5	3,943	4,049	4,266	-323	-8
North Karelia	10,563	10,977	14,539	-3,976	-27	1,124	14.8	1,871	1,708	1,430	441	31
Central Finland	17,136	17,781	22,013	-4,877	-22	1,944	13.8	2,862	2,693	1,920	942	49
South Ostrobothnia	6,806	7,395	11,602	-4,796	-41	1,107	7.9	3,538	4,258	2,367	1,171	49
Ostrobothnia	8,555	9,088	13,493	-4,938	-37	1,329	7.6	3,018	3,783	2,011	1,007	50
North Ostrobothnia	22,678	23,678	31,855	-9,177	-29	2,975	12.1	6,325	6,633	3,818	2,507	66
Kainuu	3,521	3,534	5,123	-1,602	-31	453	11.4	1,348	1,289	1,012	336	33
Lapland	11,134	11,375	15,696	-4,562	-29	1,837	13.8	3,070	2,805	1,719	1,351	79
Åland	1,164	1,448	1,919	-755	-39	335	7.7	247	367	170	77	45
Abroad	351	360	596	-245	-41	177	.	1,996	2,586	3,105	-1,109	-36
WHOLE COUNTRY	318,408	331,526	433,058	-114,650	-26	53,890	12.1	75,284	79,299	52,384	22,900	44



Unemployed jobseekers by gender and age-group

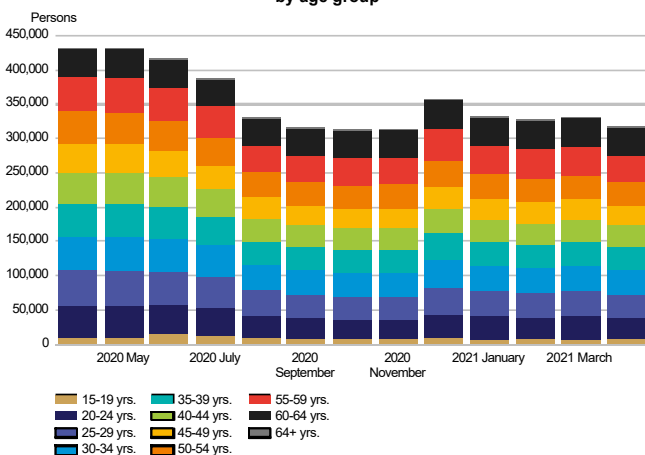
**UNEMPLOYED JOBSEEKERS
by gender**



Unemployment decreased more among women than men

Of the unemployed jobseekers, 182,400 (57%) were men and 136,000 (43%) were women, indicating a decrease of 8,500 for men and 4,600 for women from the figures for March. Compared with April a year ago, unemployment decreased by 47,700 (-21%) among men and by 67,000 (-33%) among women.

**UNEMPLOYED JOBSEEKERS
by age group**



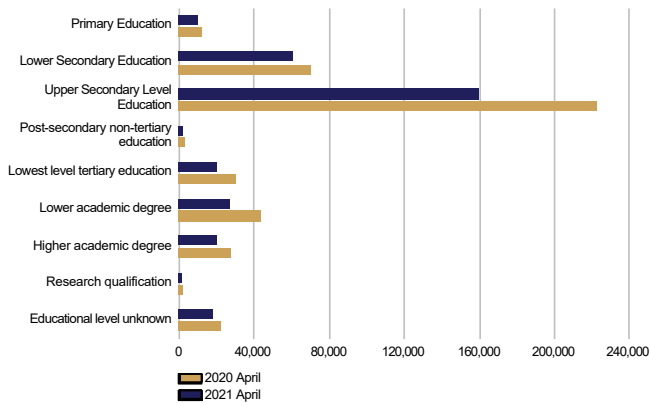
Unemployment decreased in all age groups under the age of 65

At the end of April, unemployed jobseekers under 25 years of age numbered 38,600, representing a decrease of 17,700 from April a year ago. Youth unemployment fell by 2,000 from March. For those under 20, the number of unemployed was 7,000. Among those over 50, the number of unemployed was 116,200, representing a decrease of 25,400 on the year before. Among those over 55, the number of unemployed was 82,500, representing a decrease of 11,300 on the year before. Unemployment fell the most for those between 20–29 years (-32%) and in the age groups 15–19 and 40–44 (-31%). Among those over 64, unemployment increased by 6% from the previous year. With the exception of those over 64, unemployment decreased in all age groups compared with March, the most among those aged under 30 and those aged 50–54 (-5%).



Unemployed jobseekers by levels of education and occupational group

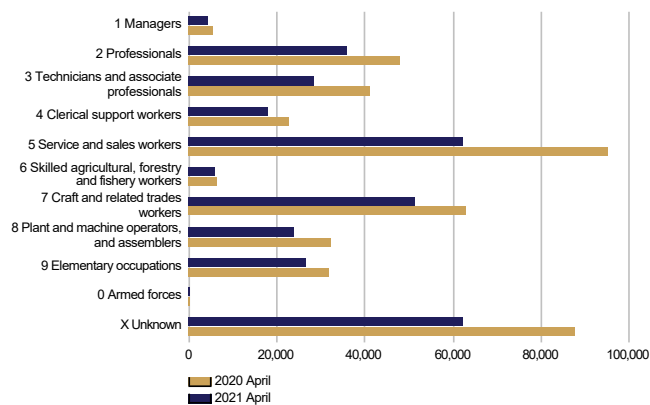
**UNEMPLOYED JOBSEEKERS
by level of education**



Unemployment decreased at all levels of education

Examined by level of education, unemployment decreased from April last year at all levels of education; the decrease was greatest among those with lower-degree level tertiary education (-38%), post-secondary non-tertiary education (-35%), lowest level of tertiary education (-33%) and higher-degree level tertiary education (-30%). Unemployment fell the least among those with higher level basic qualifications (-14%) and doctorate or equivalent level tertiary education (-14%).

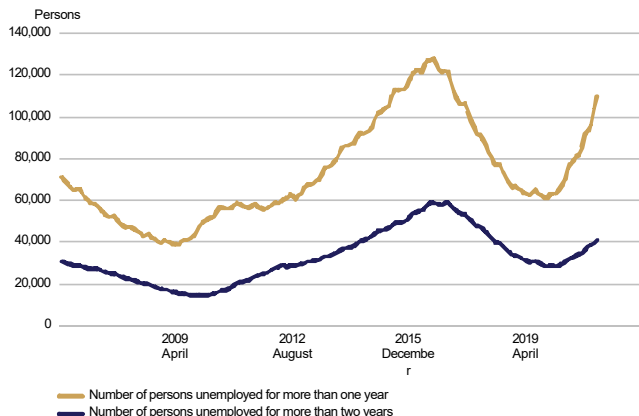
**UNEMPLOYED JOBSEEKERS
by occupational group**



Unemployment decreased in almost all occupations

Examined by occupation, unemployment decreased in all groups, with the exception of armed forces, from April last year; the greatest decreases were in the groups of service and sales workers (-33,100), 'unknown' (-25,200), technicians and associate professionals (-12,800) and professionals (-12,100). Unemployment among armed forces remained unchanged, while unemployment among agricultural and forestry workers fell the least (-500).

**LONG-TERM UNEMPLOYED
at the end of the month**

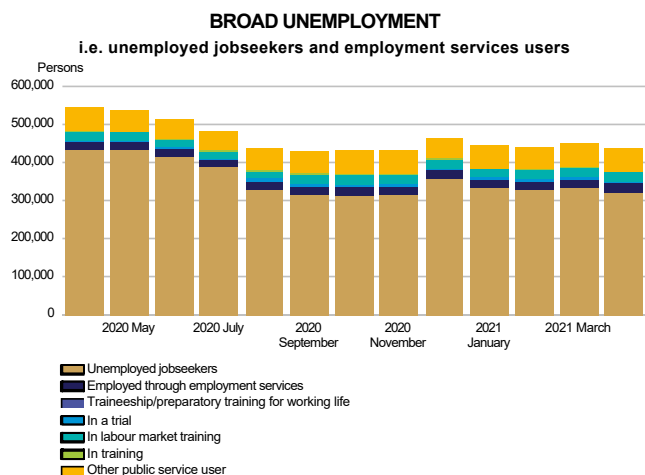


Increase in long-term unemployment

At the end of April, the number of long-term unemployed who have been unemployed without interruption for more than a year amounted 109,700, up 42,300 on the previous year. Of the long-term unemployed, 65,700 were men and 44,000 were women. The number of men increased by 25,400 (63%) from the previous year and the number of women by 16,900 (63%). The number of long-term unemployed who had been unemployed without interruption for more than two years numbered 41,000, which is 11,500 more than a year ago.



Services

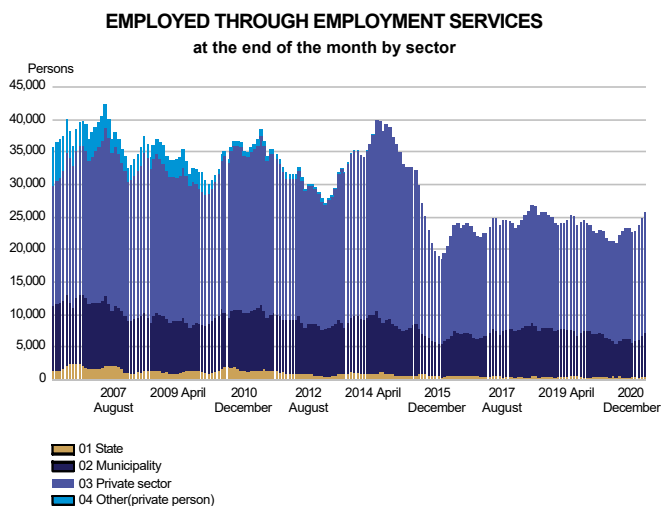


Increase in the number of persons in services

At the end of April, the number of persons covered by services included in the activation rate amounted to 117,000, up 6,000 on the previous year. Compared with March, the number of persons covered by such services decreased by 100. Of those covered by services, 61,900 were customers of municipalities participating in the local government pilots on employment. The activation rate at the end of April was 26.9%, which is 6.5 percentage points higher than a year earlier. In all, 4.3% of the labour force were covered by these services.

Of those covered by services, the number of men was 55,800, up 2,500 on the previous year. The number of women covered by these services was 61,200, up 3,500 on the previous year.

Broad unemployment, or the total number of unemployed jobseekers and those covered by services, was 435,400 at the end of April. This is 108,700 less than a year earlier. The decrease in broad unemployment was mainly due to a decrease in the number of the unemployed.



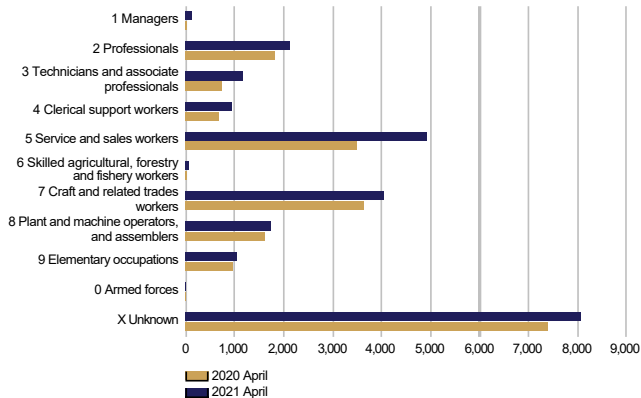
The number of placements increased particularly in the private sector

At the end of April, the number of persons claiming pay subsidies, employed by the State or receiving start-up grants totalled 25,800, which is 4,000 more than the year before. Of those employed, 2% were in government jobs, 26% in local government jobs and 72% in the private sector. Since April of the year before, the number of placements has increased by 12% in government jobs, by 9% in local government jobs and by 23% in the private sector. Of those employed, 52% were men. Placements for men increased by 2,300, and those for women by 1,700 from the previous year.



Labour market training, training and self-motivated studies

PERSONS IN LABOUR MARKET TRAINING
in target profession at the end of the month

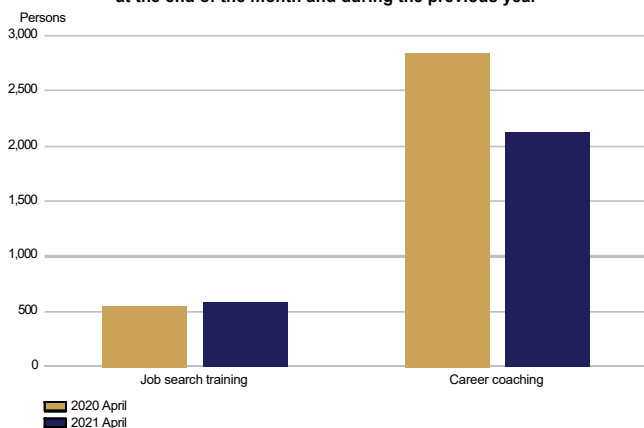


Increase in the number of persons in labour market training

At the end of April, labour market training was attended by 24,200 students, up 3,800 on the previous year. Of the students, 11,500 were men and 12,700 were women. The number of men increased by 1,300, and the number of women by 2,500 from April last year. During April, 4,200 new students began labour market training, representing an increase of 1,900 on the year before.

Based on target occupation, the largest subgroup within the category of 'unknown' were people in integration training (7,200), which is 500 more than the year before.

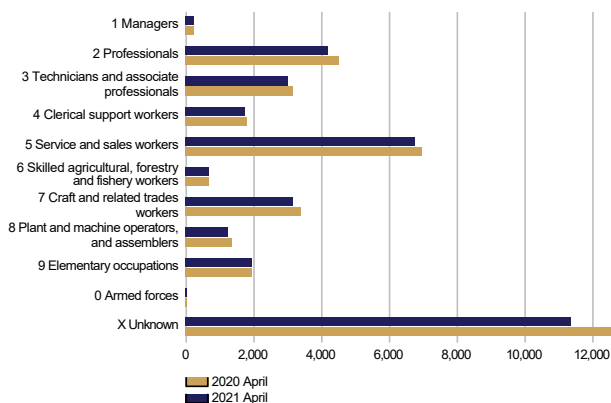
IN TRAINING
at the end of the month and during the previous year



The number of persons in training decreased

At the end of April, 2,700 persons were in training, which is 700 less than the year before. Of those in training, 1,300 were men and 1,400 women. Career coaching was provided to 2,100 participants, which is 700 less than a year earlier. The number of participants in job search training remained unchanged from the year before.

IN SELF-MOTIVATED STUDIES
in person's profession at the end of the month



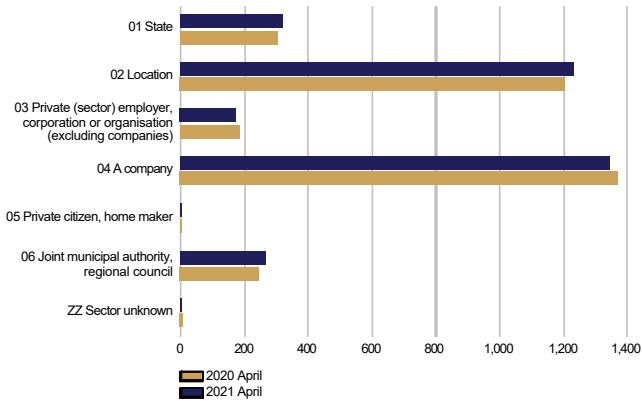
The number of people in self-motivated study decreased from the previous year

Self-motivated studies supported by unemployment benefits were attended by a total of 34,300 people, representing a decrease of 2,300 on the year before. The number of men receiving unemployment benefits for studies was 13,800, down 1,300 on the previous year. Among women, the number was 20,400, representing a decrease of 1,000 on the year before. Occupation was undetermined in case of 10,000 persons in the group of 'unknown', down 1,000 on the previous year.



Job alternation, rehabilitative work and trials

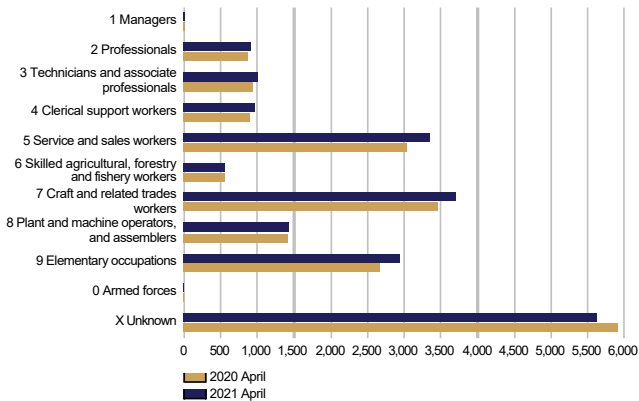
AS A JOB ALTERNATION SUBSTITUTE
at the end of the month and during the previous year by sector



The number of job alternation substitutes remained the same

A total of 3,300 persons were job alternation substitutes at the end of April, which is the same number as the year earlier. Of the substitutes, 1,200 were men and 2,200 were women. The number of men decreased by a couple of dozen, while the number of women increased by a few dozen compared to the previous year.

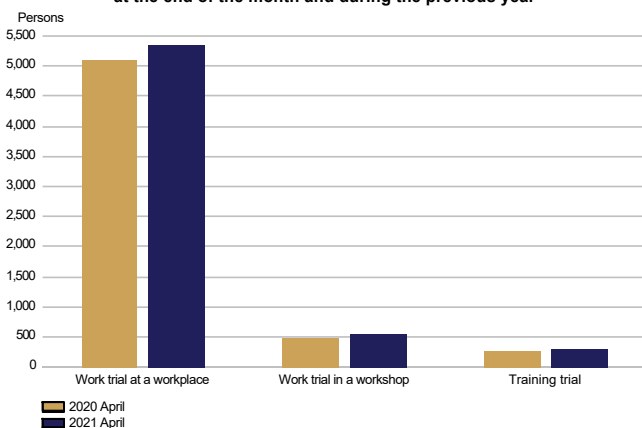
REHABILITATIVE WORK ACTIVITIES
at the end of the month and during the previous year



More participants in rehabilitative work activities than in the previous year

A total of 20,500 persons participated in rehabilitative work activities at the end of April, which is 800 more than a year earlier. Of the participants, 11,500 were men and 9,000 were women. The number of men increased by 500 and the number of women by 200 from the previous year.

IN TRIALS
at the end of the month and during the previous year



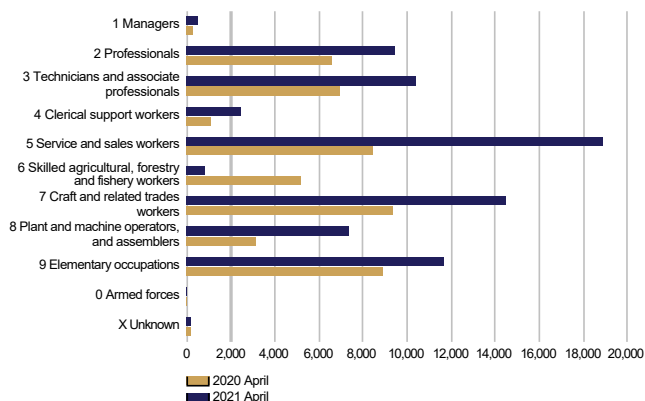
Participation in work and training trials increased

Work and training trials had a total of 6,200 participants at the end of April, which is 400 more than a year earlier. Of the participants, 3,000 were men and 3,200 were women. The number of men increased by 200 from the previous year and the number of women also increased by 200.



Jobs vacant

NEW JOB VACANCIES
during the month and during the previous year



Increase in the number of new vacancies from the year before

The number of new vacancies reported to Employment and Economic Development Offices and municipalities participating in the local government pilots on employment during April totalled 76,100, which is 26,000 more than in April last year. In all, the number of unfilled vacancies in April amounted to 152,900, which is 39,600 more than a year ago. A total of 10,700 of these vacancies were filled during April, 2,500 of them through Employment and Economic Development Offices. A total of 62,900 vacancies were closed for applications because the application period had ended or because there was a sufficient number of applicants. In addition, a total of 4,600 vacancies were cancelled and 1,600 vacancies could not be filled. The number of vacancies remaining unfilled at Employment and Economic Development Offices and in local government pilots at the end of April was 75,300, up 22,900 on the previous year.

The number of new vacancies had increased for nine occupational groups; the greatest increases were in the groups of service and sales workers (10,400), craft and related trades workers (5,100), plant and machine operators, and assemblers (4,300), technicians and associate professionals (3,400) and professionals (2,900). The number of new job vacancies decreased only in the group of skilled agricultural, forestry and fishery workers (-4,400).



Summary table

EMPLOYMENT SITUATION AT THE END OF 2021 APRIL (I) AND
ACTIVITIES OF EMPLOYMENT AND ECONOMIC DEVELOPMENT OFFICES DURING APRIL (II)
WHOLE COUNTRY

I EMPLOYMENT SITUATION AT THE END OF MONTH	Apr-21	Apr-20	CHANGE NUMBER	CHANGE %
A. JOBSEEKERS				
1. Unemployed jobseekers	318,408	433,058	-114,650	-26.5
of whom fully laid off	53,890	163,724	-109,834	-67.1
2. On reduced working week	16,269	20,252	-3,983	-19.7
3. Those who have work	208,962	192,607	16,355	8.5
of whom in the general labour market	189,131	174,810	14,321	8.2
of whom employed through employment services	19,831	17,797	2,034	11.4
4. Persons outside the labour force	113,685	108,792	4,893	4.5
of whom in services promoting employment	26,525	24,961	1,564	6.3
of whom in training	66,861	61,292	5,569	9.1
1-4 Total of jobseekers	657,324	754,709	-97,385	-12.9
B. LABOUR DEMAND				
1. Jobs vacant	75,284	52,384	22,900	43.7
of those notified for over a month	26,822	23,372	3,450	14.8
of those notified for over 2 months	18,647	15,180	3,467	22.8
C. PARTICIPATING IN SERVICES				
1. Employed by the State	504	452	52	11.5
2. Employed by municipalities	6,631	6,096	535	8.8
3. Employed by the private sector	18,668	15,236	3,432	22.5
1-3 Total number of employed people	25,803	21,784	4,019	18.4
4. Labour market training	24,176	20,351	3,825	18.8
5. Training	2,706	3,387	-681	-20.1
6. Engaged in work/training trials	6,197	5,833	364	6.2
7. As a job alternation substitute	3,337	3,314	23	0.7
8. Rehabilitative work	20,502	19,749	753	3.8
9. Self-motivated studies supported by unemployment benefit	34,273	36,593	-2,320	-6.3
1-9 Total number of people participating in services	116,994	111,011	5,983	5.4
D. STRUCTURE OF UNEMPLOYMENT				
1. Unemployed women	136,031	203,005	-66,974	-33.0
2. Unemployed men	182,377	230,053	-47,676	-20.7
3. Under 25 years old	38,606	56,295	-17,689	-31.4
4. Over 50 years old	116,175	141,539	-25,364	-17.9
5. Unemployed over a year	109,735	67,396	42,339	62.8
6. Foreign unemployed	34,806	40,546	-5,740	-14.2
E. UNEMPLOYMENT SECURITY				
1. Unemployed members of employees' unemployment funds	135,675	199,872	-64,197	-32.1
II EMPLOYMENT SITUATION DURING THE MONTH				
1. Unemployed jobseekers	356,102	467,912	-111,810	-23.9
2. Other jobseekers	331,323	314,477	16,846	5.4
1-2 Total number of jobseekers	687,425	782,389	-94,964	-12.1
3. Vacancies during a month	152,882	113,277	39,605	35.0
New vacancies during a month	76,116	50,084	26,032	52.0
Vacancies filled during a month	10,728	11,118	-390	-3.5
of those filled with job-seekers at the Employment Service	2,511	3,151	-640	-20.3
Vacancies application period ended or sufficient number of applicants	62,919	46,470	16,449	35.4
Vacancies cancelled or could not be filled	6,226	5,347	879	16.4
4. Started spell of unemployment	38,331	173,623	-135,292	-77.9
5. Completed spell of unemployment	44,889	47,324	-2,435	-5.1
6. New jobs found through employment services	2,739	1,920	819	42.7
7. New entrants to labour market training	4,215	2,349	1,866	79.4



Foreigners' summary table

FOREIGNERS' EMPLOYMENT SITUATION AT THE END OF 2021 APRIL (I) AND
ACTIVITIES OF EMPLOYMENT AND ECONOMIC DEVELOPMENT OFFICES DURING APRIL (II)
WHOLE COUNTRY

I EMPLOYMENT SITUATION AT THE END OF MONTH	Apr-21	Apr-20	CHANGE NUMBER	CHANGE %
A. JOBSEEKERS				
1. Unemployed jobseekers	34,806	40,546	-5,740	-14.2
of whom fully laid off	6,089	13,114	-7,025	-53.6
2. On reduced working week	1,077	1,025	52	5.1
3. Those who have work	20,135	16,810	3,325	19.8
of whom in the general labour market	18,494	15,354	3,140	20.5
of whom employed through employment services	1,641	1,456	185	12.7
4. Persons outside the labour force	30,793	30,166	627	2.1
of whom in services promoting employment	2,660	2,618	42	1.6
of whom in training	25,765	24,952	813	3.3
1-4 Total of jobseekers	86,811	88,547	-1,736	-2.0
C. PARTICIPATING IN SERVICES				
1. Employed by the State	8
2. Employed by municipalities	444	388	56	14.4
3. Employed by the private sector	1,466	1,203	263	21.9
1-3 Total number of employed people	1,918	1,594	324	20.3
4. Labour market training	9,884	8,814	1,070	12.1
5. Training	155	171	-16	-9.4
6. Engaged in work/training trials	1,204	1,214	-10	-0.8
7. As a job alternation substitute	47	49	-2	-4.1
8. Rehabilitative work	1,342	1,435	-93	-6.5
9. Self-motivated studies supported by unemployment benefit	15,098	16,308	-1,210	-7.4
1-9 Total number of people participating in services	29,648	29,585	63	0.2
D. STRUCTURE OF UNEMPLOYMENT				
1. Unemployed women	16,204	18,982	-2,778	-14.6
2. Unemployed men	18,602	21,564	-2,962	-13.7
3. Under 25 years old	2,241	3,023	-782	-25.9
4. Over 50 years old	9,063	9,345	-282	-3.0
5. Unemployed over a year	10,150	5,055	5,095	100.8
E. UNEMPLOYMENT SECURITY				
1. Unemployed members of employees' unemployment funds	8,488	9,911	-1,423	-14.4
II EMPLOYMENT SITUATION DURING THE MONTH				
1. Unemployed jobseekers	38,909	43,157	-4,248	-9.8
2. Other jobseekers	50,340	46,694	3,646	7.8
1-2 Total number of jobseekers	89,249	89,851	-602	-0.7
4. Started spell of unemployment	4,202	12,390	-8,188	-66.1
5. Completed spell of unemployment	4,478	3,001	1,477	49.2
6. New jobs found through employment services	181	139	42	30.2
7. New entrants to labour market training	1,452	1,163	289	24.8



Regional table

UNEMPLOYED JOBSEEKERS AND JOBS VACANT BY ELY CENTRE AT THE END OF 2021 APRIL
WHOLE COUNTRY

ELY centre	Workforce	Unemployed jobseekers							Unemployed over a year	Disabled and chron. ill	Jobs vacant
		% of workforce	Total	Men	Women	Under 20 years old	Under 25 years old	Over 50 years old			
Uusimaa	880,161	12.9	113,331	61,909	51,422	1,934	11,835	38,047	43,343	8,565	20,267
Southwest Finland	228,633	11.1	25,340	14,365	10,975	563	3,191	9,125	7,471	2,812	6,965
Satakunta	96,959	11.0	10,694	6,336	4,358	277	1,327	4,607	3,388	1,353	2,413
Häme	170,771	13.2	22,548	13,057	9,491	553	2,806	9,059	8,510	3,273	4,977
Pirkanmaa	247,562	11.5	28,354	15,859	12,495	553	3,613	9,401	8,812	2,856	7,395
Southeast Finland	128,857	12.9	16,640	9,516	7,124	424	1,988	7,046	5,103	1,870	2,630
South Savo	56,747	11.7	6,646	4,086	2,560	176	829	2,926	2,150	1,103	2,419
North Savo	112,391	11.5	12,945	7,985	4,960	281	1,639	5,277	4,886	1,861	3,943
North Karelia	71,372	14.8	10,563	6,427	4,136	221	1,251	4,650	3,902	1,332	1,871
Central Finland	124,466	13.8	17,136	10,099	7,037	477	2,676	6,059	6,252	1,643	2,862
South Ostrobothnia	86,161	7.9	6,806	4,163	2,643	213	952	2,607	1,555	1,102	3,538
Ostrobothnia	112,960	7.6	8,555	5,101	3,454	202	1,066	3,196	2,583	1,089	3,018
North Ostrobothnia	187,001	12.1	22,678	13,497	9,181	761	3,558	7,535	7,339	2,604	6,325
Kainuu	30,941	11.4	3,521	2,238	1,283	89	411	1,689	853	565	1,348
Lapland	80,787	13.8	11,134	6,832	4,302	245	1,318	4,486	3,195	1,234	3,070
Åland	15,115	7.7	1,164	658	506	...	136	374	294	...	247
Abroad	0	0.0	351	248	103	...	8	91	98	...	1,996
Total	2,630,884	12.1	318,408	182,377	136,031	6,996	38,606	116,175	109,735	33,305	75,284



Information about the website

On this website you will find the latest statistics from the Ministry of Economic Affairs and Employment's monthly Employment Bulletin. You can access a .pdf version of the current and previous months' Employment Bulletin by following the link on the right. The Employment Bulletin is based on the data from the MEAE's Employment Service Statistics. The Ministry of Economic Affairs and Employment compiles statistics on the clients of the Employment and economic development offices (TE offices), including registered job-seekers, labour market policy services, and job vacancies reported to TE offices by employers. The data is collected from the customer service registry (URA) used by the TE offices. This means that the data used by MEAE Employment Service Statistics is completely registry-based. The statistical data covers all persons, services, and open vacancies in the aforementioned groups, as separately defined in the registry by the classifications and variables for the statistical period in question.

Owing to seasonal variations, the Employment Bulletin always includes a comparison with the corresponding month in the previous year. The descriptors used in the Bulletin are also available in a table format. The Employment Bulletins are published at the end of the subsequent calendar month. The official date of publication is announced in advance.

The following symbols have been used:

. Category not applicable

... Data subject to secrecy

Links:

- **Employment Service Statistics online:**

<https://www.tem.fi/en/employment-bulletin-and-employment-service-statistics>

- **Employment Service Statistics, Description and Quality Description**

<https://www.tem.fi/en/release-dates-of-statistics-and-description-and-quality-description>

- **You can access key information from MEAE's Employment Service Statistics by visiting the Statistics Finland's StatFin database:**

https://pxnet2.stat.fi/PXWeb/pxweb/en/StatFin/StatFin__tym__tyonv/

- **The Employment Service Statistics data is also available from the MEAE Publications page (only available in Finnish).**

<https://www.tem.fi/tyopoliittinen-aikakauskirja>

- **Joint monthly report from MEAE and Statistics Finland**

https://tilastokeskus.fi/til/tyti/tie_en.html

- **Comparison between the statistics of Statistics Finland and the Ministry of Economic Affairs and Employment**

https://www.stat.fi/til/tyti/tyti_2019-09-13_men_001_en.html

- **Comparison between the Job Vacancy Survey of Statistics Finland and Employment Service Statistics of the Ministry of Economic Affairs and Employment**

https://tilastokeskus.fi/til/atp/atp_2017-01-02_men_001.html

- **Local government pilots on employment (In Finnish):**

[https://app.powerbi.com/view?](https://app.powerbi.com/view?r=eyJrJoiMzA0M2ViOWQtOTIwYy00ZjZjLWJjOTgtZDRkOGFmMTc0NGExIiwidCI6ImQ5NTk1MWE2LWWRmZDMtNGE3NC05YWJiLWYyYjYjYjg5ZDY3MSIsImMiOiJh9)

[r=eyJrJoiMzA0M2ViOWQtOTIwYy00ZjZjLWJjOTgtZDRkOGFmMTc0NGExIiwidCI6ImQ5NTk1MWE2LWWRmZDMtNGE3NC05YWJiLWYyYjYjYjg5ZDY3MSIsImMiOiJh9](https://app.powerbi.com/view?r=eyJrJoiMzA0M2ViOWQtOTIwYy00ZjZjLWJjOTgtZDRkOGFmMTc0NGExIiwidCI6ImQ5NTk1MWE2LWWRmZDMtNGE3NC05YWJiLWYyYjYjYjg5ZDY3MSIsImMiOiJh9)

Instructions for referencing:

Official Statistics of Finland (OSF): Ministry of Economic Affairs and Employment / Employment Service Statistics. ISSN 1797-3694 202Y:MM, Employment Bulletin, MONTH 202Y. Helsinki: Ministry of Economic Affairs and Employment (date of reference). Available at:

<https://www.temtyollisyyskatsaus.fi>



Contact information

Ministry of Economic Affairs and Employment

Employment and Well-Functioning Markets Department

Kaisa-Mari Kuusela, +358 29 504 8294

Petri Syvänen, +358 29 504 8050

Hilkka Kattelus, +358 29 504 8047

E-mail: [firstname.lastname\(at\)tem.fi](mailto:firstname.lastname(at)tem.fi) /
[tyonvalitystilasto\(at\)tem.fi](mailto:tyonvalitystilasto(at)tem.fi)

<https://www.temtyollisyyskatsaus.fi>

ISSN: 1797-3694 (online publication)

