



Employment Bulletin

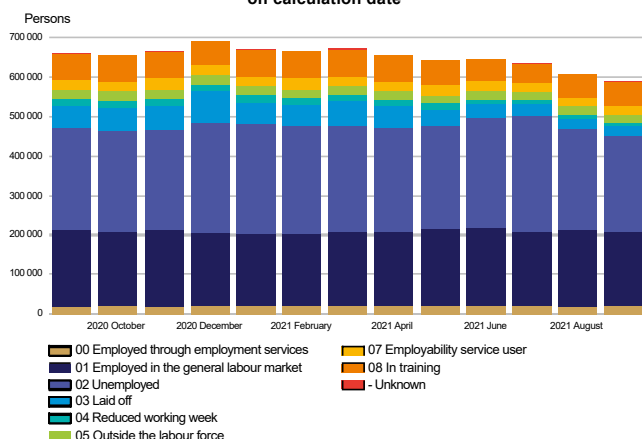
September 2021



Ministry of Economic Affairs
and Employment of Finland

All jobseekers

Jobseekers by group
on calculation date



The total number of jobseekers decreased

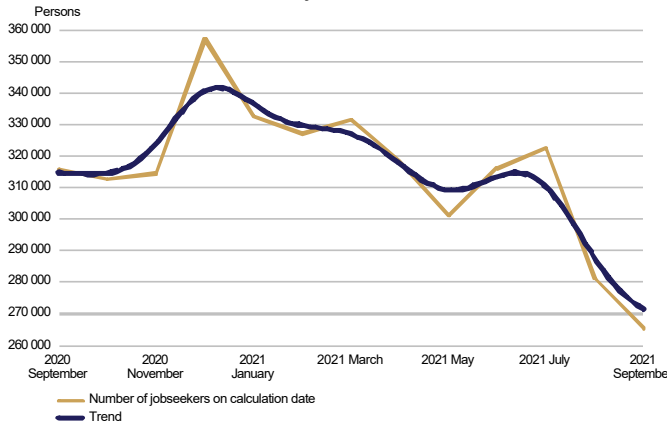
At the end of September, the number of jobseekers registered at the Employment and Economic Development Offices and municipalities participating in the local government pilots on employment totalled 589,900, down 68,600 on the previous year. Of the jobseekers, 297,600 were men and 292,300 were women. Compared to the situation a year ago, the number of men decreased by 37,300 and the number of women by 31,300. Of the jobseekers, 232,700 were customers of municipalities participating in the local government pilots on employment.

Of the jobseekers, 208,900 were employed, 187,200 of them were on the open labour market and 21,700 were employed through the services organised by the employment and economic development administration and local government pilots on employment. The number of jobseekers outside the labour force was 105,300, of whom 24,000 were in services promoting employment and 62,100 in training. Of the jobseekers, 265,300 were unemployed jobseekers, which is 50,500 less than the year before. In September, 21,100 of unemployed jobseekers were fully laid off, which is 3,500 less than in August. The number of people fully laid off decreased by 35,700 from September a year earlier. Furthermore, jobseekers on a reduced working week numbered 10,500, representing a decrease of 6,400 from the year before.



Unemployed jobseekers

UNEMPLOYED JOBSEEKERS
monthly and trend

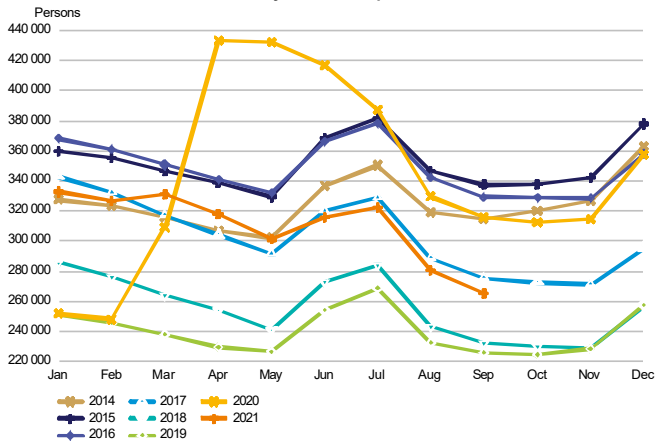


Decrease in unemployed jobseekers in September

At the end of September, the number of unemployed jobseekers registered at the Employment and Economic Development Offices and municipalities participating in the local government pilots on employment totalled 265,300, down 50,500 on the previous year. The number of unemployed jobseekers decreased by 15,700 from August. Of the unemployed jobseekers, 143,200 were customers of municipalities participating in the local government pilots on employment. The number of new job searches among unemployed jobseekers totalled 11,000, down 4,600 from September a year ago. In September, the number of starting periods of unemployment totalled 34,600, representing a decrease of 20,000 on the year before. The number of starting periods of unemployment increased by 1,200 from August. The number of starting periods is always greater than the number of job searches because new unemployment periods are also registered from the existing groups of jobseekers.

The number of foreign citizens among unemployed jobseekers totalled 31,400, down 1,700 from September a year ago. Of these foreign unemployed jobseekers, EU/EEA citizens accounted for 9,500 at the end of September, down 800 from the year before.

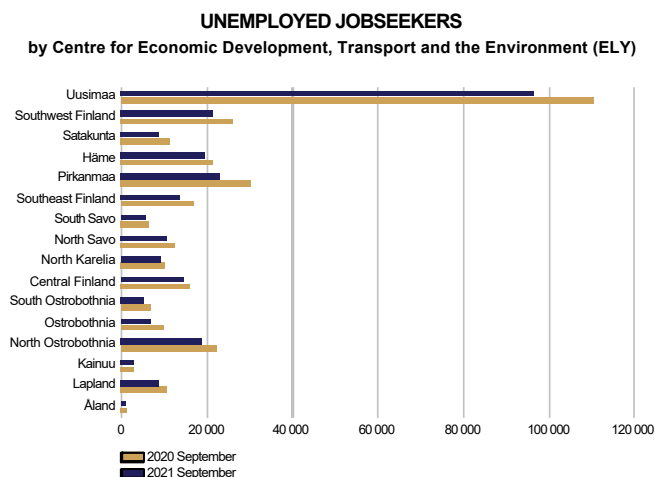
UNEMPLOYED JOBSEEKERS
month by month comparison



In September, 21,100 of unemployed jobseekers were fully laid off, which is 3,500 less than in August. The number of people fully laid off decreased by 35,700 from September a year earlier. In September, the number of job searches among the fully laid off people totalled 1,200, representing a decrease of 3,400 on the year before. The number of starting periods of full lay-offs was 4,400, down 17,500 from September a year ago. The number of starting periods of full lay-offs decreased by 300 from August. The number of people fully laid off decreased in all occupational groups, with the exception of armed forces. The greatest decreases were in the groups of 'unknown' (-8,500), service and sales workers (-5,600), craft and related trades workers (-5,400), professionals (-4,400), and plant and machine operators, and assemblers (-3,700).



Unemployed jobseekers by region



Unemployment decreased in the areas of all ELY Centres

Compared to the same period in the previous year, the number of unemployed jobseekers decreased in September in the areas of all Centres for Economic Development, Transport and the Environment (ELY Centres); the most in Ostrobothnia (-30%), South Ostrobothnia (-24%), Pirkanmaa (-24%) and Satakunta (-23%). The number of unemployed jobseekers decreased the least in Kainuu (-7%), Häme (-10%) and Central Finland (-10%). The number of unemployed jobseekers fell the most in Åland, by 45%. Also compared to August, the number of unemployed jobseekers decreased in the areas of all ELY Centres; the most in Ostrobothnia (-8%) and South Ostrobothnia (-7%). The number of unemployed jobseekers fell the least in South Savo (-1%), compared with August.

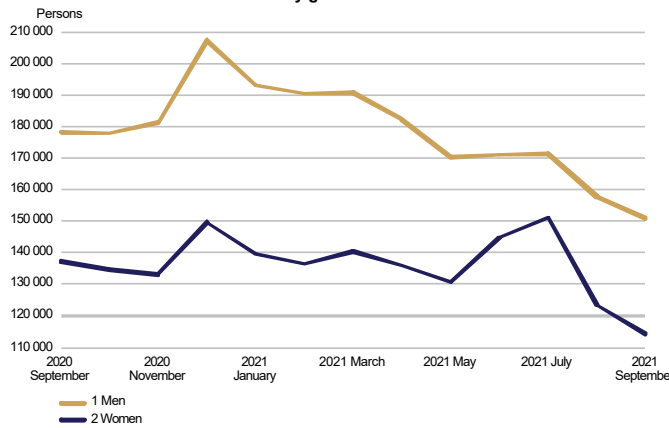
Unemployed jobseekers and jobs vacant in Employment and Economic Development Office by ELY centre

| ELY centre | Unemployed jobseekers | | Change | | Of the Unemployed jobseekers' fully laid off | | Jobs vacant | | Change | |
|--------------------|-----------------------|----------|----------|----------|--|----------|-------------|----------|----------|--|
| | Sep 2021 | Aug 2021 | Sep 2021 | Sep 2020 | percentage of the workforce | Sep 2021 | Aug 2021 | Sep 2021 | Sep 2020 | |
| Uusimaa | 96 383 | 102 729 | -14 036 | -13 | 11,0 | 22 707 | 22 176 | 14 291 | 8 416 | |
| Southwest Finland | 21 375 | 22 653 | -4 569 | -18 | 9,3 | 7 141 | 6 874 | 3 691 | 3 450 | |
| Satakunta | 8 597 | 9 109 | -2 561 | -23 | 8,9 | 2 223 | 2 459 | 1 416 | 807 | |
| Häme | 19 445 | 20 185 | -2 121 | -10 | 11,4 | 5 932 | 4 606 | 2 610 | 3 322 | |
| Pirkanmaa | 22 987 | 24 580 | -7 151 | -24 | 9,3 | 9 243 | 8 990 | 5 326 | 3 917 | |
| Southeast Finland | 13 628 | 14 111 | -3 139 | -19 | 10,6 | 2 609 | 2 569 | 1 913 | 696 | |
| South Savo | 5 434 | 5 493 | -1 009 | -16 | 9,6 | 1 783 | 1 849 | 1 013 | 770 | |
| North Savo | 10 698 | 11 284 | -1 962 | -15 | 9,5 | 3 758 | 3 660 | 2 503 | 1 255 | |
| North Karelia | 8 868 | 9 390 | -1 497 | -14 | 12,4 | 1 446 | 1 371 | 939 | 507 | |
| Central Finland | 14 575 | 15 421 | -1 609 | -10 | 11,7 | 3 191 | 2 750 | 1 879 | 1 312 | |
| South Ostrobothnia | 5 181 | 5 548 | -1 635 | -24 | 6,0 | 2 832 | 2 832 | 1 533 | 1 299 | |
| Ostrobothnia | 6 809 | 7 390 | -2 985 | -30 | 6,0 | 2 575 | 2 342 | 1 751 | 824 | |
| North Ostrobothnia | 18 632 | 19 841 | -3 488 | -16 | 10,0 | 6 186 | 5 662 | 4 208 | 1 978 | |
| Kainuu | 2 766 | 2 932 | -224 | -7 | 8,9 | 1 175 | 1 108 | 866 | 309 | |
| Lapland | 8 820 | 9 210 | -1 721 | -16 | 10,9 | 4 476 | 3 779 | 2 007 | 2 469 | |
| Åland | 814 | 855 | -660 | -45 | 5,4 | 296 | 278 | 108 | 188 | |
| Abroad | 300 | 316 | -99 | -25 | . | 2 604 | 2 543 | 1 876 | 728 | |
| WHOLE COUNTRY | 265 314 | 281 049 | -50 466 | -16 | 10,1 | 80 177 | 75 848 | 47 930 | 32 247 | |



Unemployed jobseekers by gender and age-group

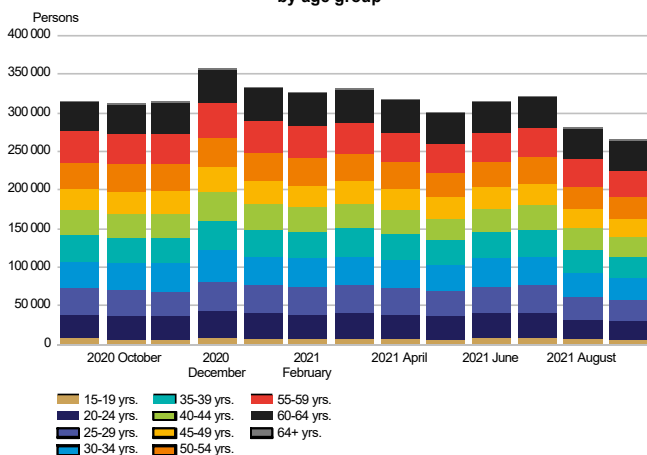
**UNEMPLOYED JOBSEEKERS
by gender**



Unemployment decreased more among women than men

Of the unemployed jobseekers, 151,000 (57%) were men and 114,300 (43%) were women, indicating a decrease of 6,800 for men and 9,000 for women from the figures for August. Compared with September a year ago, unemployment decreased by 27,400 (-15%) among men and by 23,100 (-17%) among women.

**UNEMPLOYED JOBSEEKERS
by age group**



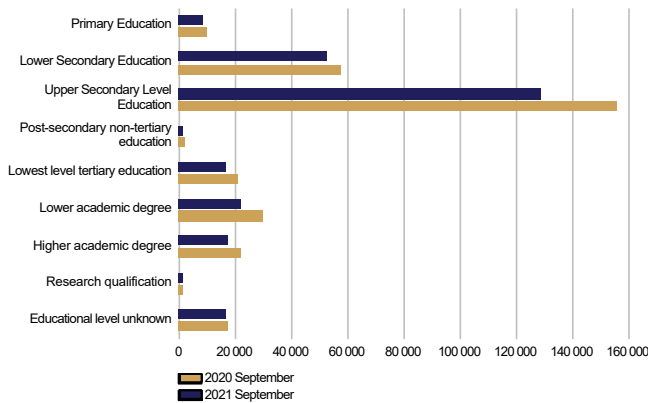
Unemployment decreased in all age groups under the age of 60

At the end of September, unemployed jobseekers under 25 years of age numbered 29,400, representing a decrease of 8,700 from September a year ago. Youth unemployment decreased from August by 3,400. For those under 20, the number of unemployed was 6,000. Among those over 50, the number of unemployed was 101,800, representing a decrease of 11,700 on the year before. Among those over 55, the number of unemployed was 74,100, representing a decrease of 4,800 on the year before. Unemployment decreased the most among those under 30 (-21%) and those between 50 and 54 (-20%). Unemployment rose from the previous year only among those over 59 years of age; the most among those over 64 (14%). Compared with August, unemployment fell in all age groups; the most among those under 30 (-9%).



Unemployed jobseekers by levels of education and occupational group

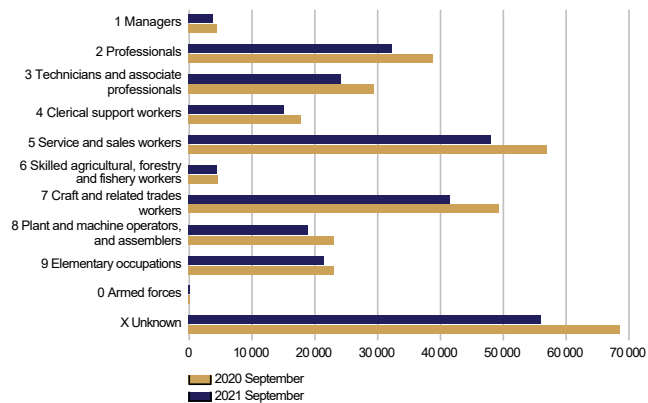
**UNEMPLOYED JOBSEEKERS
by level of education**



Unemployment decreased at all levels of education

Examined by level of education, unemployment decreased from September last year at all levels of education; the decrease was greatest among those with lower-degree level tertiary education (-25%), post-secondary non-tertiary education (-22%), higher-degree level tertiary education (-21%) and lowest level of tertiary education (-20%). Unemployment fell the least among those with level of education 'unknown' (-5%), higher level basic qualifications (-8%), and doctorate or equivalent level tertiary education (-10%).

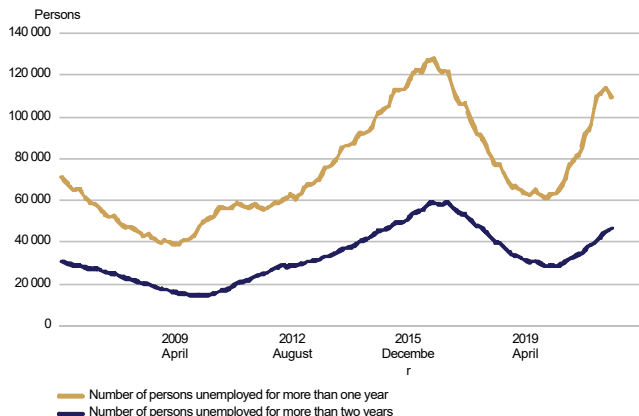
**UNEMPLOYED JOBSEEKERS
by occupational group**



Unemployment decreased in almost all occupations

Examined by occupation, unemployment decreased for all groups, with the exception of armed forces, from September of last year. The greatest decreases were in the groups of 'unknown' (-12,500), service and sales workers (-9,000), craft and related trades workers (-8,000), professionals (-6,600), and associate professionals and technicians (-5,200). Unemployment decreased the least in the groups of skilled agricultural, forestry and fishery workers (-300) and managers (-600). Unemployment within the armed forces remained unchanged from last year.

**LONG-TERM UNEMPLOYED
at the end of the month**

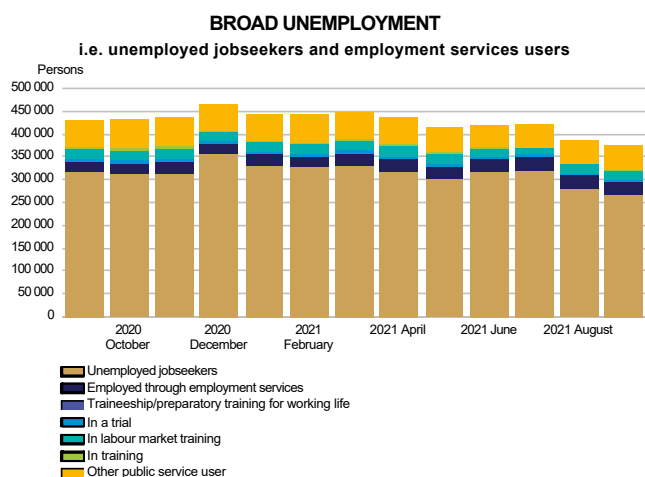


Increase in long-term unemployment

At the end of September, the number of long-term unemployed who had been unemployed without interruption for more than a year amounted to 109,400, up 28,300 on the previous year. Of the long-term unemployed, 65,100 were men and 44,300 were women. The number of men increased by 17,000 (35%) from the previous year and the number of women by 11,400 (34%). The number of long-term unemployed who had been unemployed without interruption for more than two years numbered 46,500, which is 12,900 more than a year ago.



Services

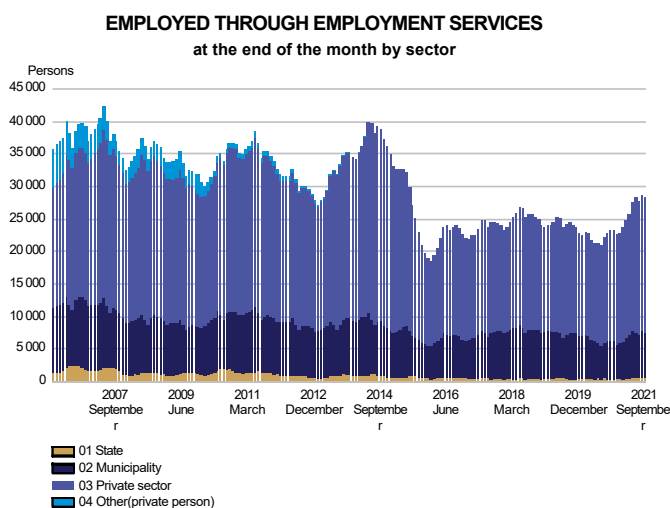


Decrease in the number of persons covered by services

At the end of September, the number of persons covered by services included in the activation rate amounted to 110,800, down 3,100 on the previous year. Compared with August, the number of persons covered by such services increased by 4,900. Of those covered by services, 59,600 were customers of municipalities participating in the local government pilots on employment. The activation rate at the end of September was 29.5%, which is 3.0 percentage points higher than a year earlier. In all, 4.1% of the labour force were covered by these services.

Of those covered by services, the number of men was 52,600, down 2,000 on the previous year. The number of women covered by these services was 58,200, down 1,200 on the previous year.

Broad unemployment, or the total number of unemployed jobseekers and those covered by services, was 376,100 at the end of September. This is 53,600 less than a year earlier. The decrease in broad unemployment was mainly due to a decrease in the number of unemployed.



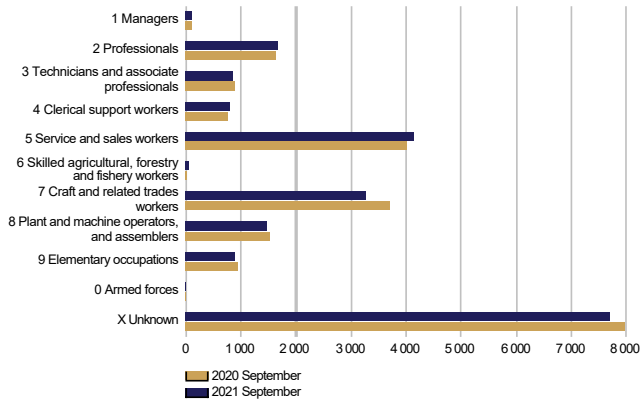
The number of placements increased particularly in local government and the private sector

At the end of September, the number of persons claiming pay subsidies, employed by the State or receiving start-up grants totalled 28,400, which is 5,500 more than the year before. Of those in placements, 2% were in government jobs, 25% in local government jobs and 73% in the private sector. Since September last year, the number of placements has increased by 4% in government jobs, by 25% in local government jobs and by 24% in the private sector. Of those employed, 53% were men. Placements for men increased by 3,100, and those for women by 2,400 from the previous year.



Labour market training, training and self-motivated studies

PERSONS IN LABOUR MARKET TRAINING
in target profession at the end of the month

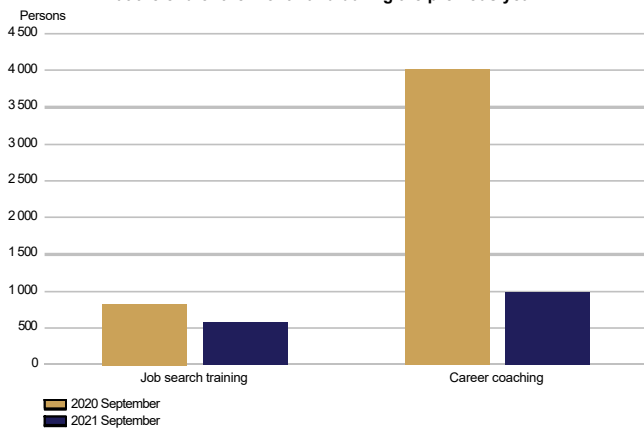


Number of persons in labour market training decreased

At the end of September, labour market training was attended by 20,900 students, down 700 on the previous year. Of the students, 9,700 were men and 11,200 were women. The number of men decreased by 600, and the number of women by 100 from September last year. During September, 5,400 new students began labour market training, representing a decrease of 600 on the year before.

Based on target occupation, the largest subgroup within the category of 'unknown' were people in integration training (6,900), which is 200 less than the year before.

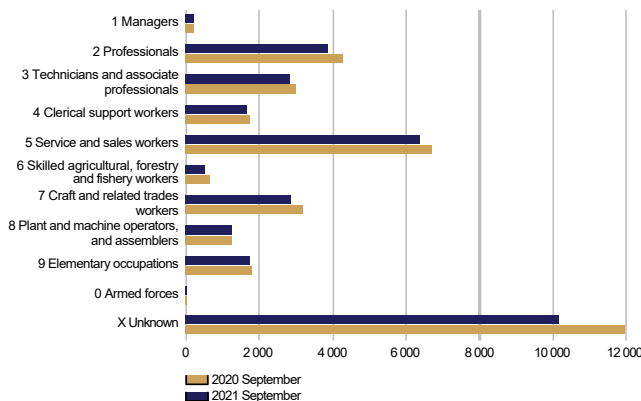
IN TRAINING
at the end of the month and during the previous year



The number of persons in training decreased

At the end of September, 1,600 persons were in training, which is 3,300 less than the year before. Of those in training, 800 were men and 800 women. Career coaching was provided to 1,000 participants, which is 3,000 less than a year earlier. The number of participants in job search training decreased by 300 from the year before.

IN SELF-MOTIVATED STUDIES
in person's profession at the end of the month



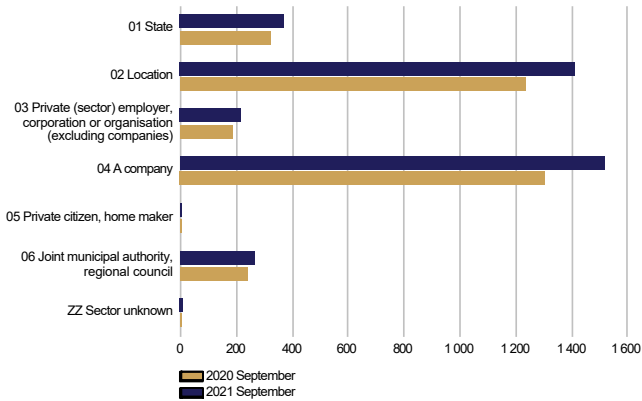
The number of people in self-motivated study decreased from the previous year

Self-motivated studies supported by unemployment benefits were attended by a total of 31,500 people, representing a decrease of 3,300 on the year before. The number of men receiving unemployment benefits for studies was 12,400, down 1,800 on the previous year. Among women, the number was 19,200, representing a decrease of 1,500 on the year before. Occupation was undetermined in case of 9,100 persons in the group of 'unknown', down 1,400 on the previous year.



Job alternation, rehabilitative work and trials

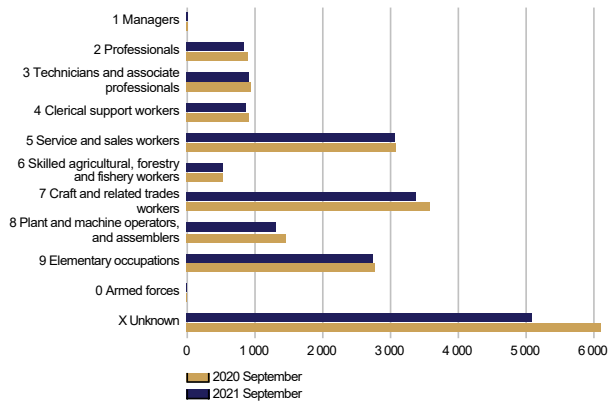
AS A JOB ALTERNATION SUBSTITUTE
at the end of the month and during the previous year by sector



The number of job alternation substitutes increased

A total of 3,800 persons were job alternation substitutes at the end of September, which is 500 more than a year earlier. Of the substitutes, 1,400 were men and 2,400 were women. The number of men increased by 200 and the number of women by 300 from the previous year.

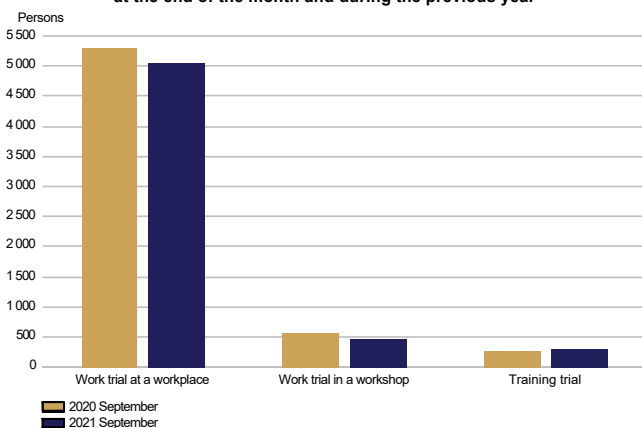
REHABILITATIVE WORK ACTIVITIES
at the end of the month and during the previous year



Fewer participants in rehabilitative work activities than in the previous year

A total of 18,800 persons participated in rehabilitative work activities at the end of September, which is 1,600 less than a year earlier. Of the participants, 10,500 were men and 8,300 were women. The number of men decreased by 1,100 and the number of women by 500 from the previous year.

IN TRIALS
at the end of the month and during the previous year



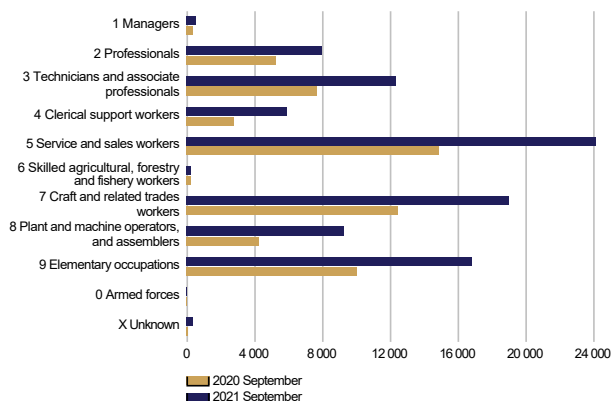
Participation in work and training trials decreased

Work and training trials had a total of 5,800 participants at the end of September, which is 300 less than the year before. Of the participants, 2,900 were men and 2,900 were women. The number of men decreased by 100 and the number of women by 200 from the previous year.



Jobs vacant

NEW JOB VACANCIES
during the month and during the previous year



Increase in the number of new vacancies from the year before

The number of new vacancies reported to Employment and Economic Development Offices and municipalities participating in the local government pilots on employment during September totalled 96,500, which is 38,500 more than in September last year. In all, the number of unfilled vacancies in September amounted to 170,300, which is 67,300 more than a year ago. A total of 12,400 of these vacancies were filled during September, 2,800 of them through Employment and Economic Development Offices. A total of 70,600 vacancies were closed for applications because the application period had ended or because there was a sufficient number of applicants. In addition, a total of 7,300 vacancies were cancelled and 2,600 vacancies could not be fulfilled. The number of vacancies remaining unfilled at Employment and Economic Development Offices and in local government pilots at the end of September was 80,200, up 32,200 on the previous year.

The number of new vacancies had increased in all occupational groups, with the exception of armed forces. The greatest increases were in the groups of service and sales workers (9,200), elementary occupations (6,700), craft and related trades workers (6,500), plant and machine operators, and assemblers (5,000) and associated professionals and technicians (4,700).



Summary table

EMPLOYMENT SITUATION AT THE END OF 2021 SEPTEMBER (I) AND
ACTIVITIES OF EMPLOYMENT AND ECONOMIC DEVELOPMENT OFFICES DURING SEPTEMBER (II)
WHOLE COUNTRY

| I EMPLOYMENT SITUATION AT THE END OF MONTH | Sep-21 | Sep-20 | CHANGE NUMBER | CHANGE % |
|---|----------------|----------------|------------------|--------------|
| A. JOBSEEKERS | | | | |
| 1. Unemployed jobseekers | 265 314 | 315 780 | -50 466 | -16,0 |
| of whom fully laid off | 21 065 | 56 737 | -35 672 | -62,9 |
| 2. On reduced working week | 10 453 | 16 868 | -6 415 | -38,0 |
| 3. Those who have work | 208 860 | 210 961 | -2 101 | -1,0 |
| of whom in the general labour market | 187 158 | 191 682 | -4 524 | -2,4 |
| of whom employed through employment services | 21 702 | 19 279 | 2 423 | 12,6 |
| 4. Persons outside the labour force | 105 273 | 114 885 | -9 612 | -8,4 |
| of whom in services promoting employment | 23 960 | 26 690 | -2 730 | -10,2 |
| of whom in training | 62 054 | 65 790 | -3 736 | -5,7 |
| 1-4 Total of jobseekers | 589 900 | 658 494 | -68 594 | -10,4 |
| B. LABOUR DEMAND | | | | |
| 1. Jobs vacant | 80 177 | 47 930 | 32 247 | 67,3 |
| of those notified for over a month | 26 281 | 16 341 | 9 940 | 60,8 |
| of those notified for over 2 months | 15 387 | 9 662 | 5 725 | 59,3 |
| C. PARTICIPATING IN SERVICES | | | | |
| 1. Employed by the State | 518 | 497 | 21 | 4,2 |
| 2. Employed by municipalities | 7 079 | 5 655 | 1 424 | 25,2 |
| 3. Employed by the private sector | 20 768 | 16 706 | 4 062 | 24,3 |
| 1-3 Total number of employed people | 28 365 | 22 858 | 5 507 | 24,1 |
| 4. Labour market training | 20 932 | 21 594 | -662 | -3,1 |
| 5. Training | 1 568 | 4 850 | -3 282 | -67,7 |
| 6. Engaged in work/training trials | 5 823 | 6 134 | -311 | -5,1 |
| 7. As a job alternation substitute | 3 788 | 3 298 | 490 | 14,9 |
| 8. Rehabilitative work | 18 754 | 20 340 | -1 586 | -7,8 |
| 9. Self-motivated studies supported by unemployment benefit | 31 541 | 34 834 | -3 293 | -9,5 |
| 1-9 Total number of people participating in services | 110 771 | 113 908 | -3 137 | -2,8 |
| D. STRUCTURE OF UNEMPLOYMENT | | | | |
| 1. Unemployed women | 114 311 | 137 387 | -23 076 | -16,8 |
| 2. Unemployed men | 151 003 | 178 393 | -27 390 | -15,4 |
| 3. Under 25 years old | 29 410 | 38 129 | -8 719 | -22,9 |
| 4. Over 50 years old | 101 836 | 113 545 | -11 709 | -10,3 |
| 5. Unemployed over a year | 109 381 | 81 054 | 28 327 | 34,9 |
| 6. Foreign unemployed | 31 378 | 33 052 | -1 674 | -5,1 |
| E. UNEMPLOYMENT SECURITY | | | | |
| 1. Unemployed members of employees' unemployment funds | 98 169 | 133 462 | -35 293 | -26,4 |
| II EMPLOYMENT SITUATION DURING THE MONTH | | | | |
| 1. Unemployed jobseekers | 297 596 | 358 929 | -61 333 | -17,1 |
| 2. Other jobseekers | 322 397 | 337 682 | -15 285 | -4,5 |
| 1-2 Total number of jobseekers | 619 993 | 696 611 | -76 618 | -11,0 |
| 3. Vacancies during a month | 170 276 | 102 977 | 67 299 | 65,4 |
| New vacancies during a month | 96 525 | 58 054 | 38 471 | 66,3 |
| Vacancies filled during a month | 12 380 | 8 729 | 3 651 | 41,8 |
| of those filled with job-seekers at the Employment Service | 2 775 | 3 688 | -913 | -24,8 |
| Vacancies application period ended or sufficient number of applicants | 70 621 | 43 819 | 26 802 | 61,2 |
| Vacancies cancelled or could not be filled | 9 876 | 4 172 | 5 704 | 136,7 |
| 4. Started spell of unemployment | 34 553 | 54 598 | -20 045 | -36,7 |
| 5. Completed spell of unemployment | 38 886 | 53 280 | -14 394 | -27,0 |
| 6. New jobs found through employment services | 3 335 | 3 731 | -396 | -10,6 |
| 7. New entrants to labour market training | 5 376 | 5 999 | -623 | -10,4 |



Foreigners' summary table

FOREIGNERS' EMPLOYMENT SITUATION AT THE END OF 2021 SEPTEMBER (I) AND
ACTIVITIES OF EMPLOYMENT AND ECONOMIC DEVELOPMENT OFFICES DURING SEPTEMBER (II)
WHOLE COUNTRY

| I EMPLOYMENT SITUATION AT THE END OF MONTH | Sep-21 | Sep-20 | CHANGE NUMBER | CHANGE % |
|---|---------------|---------------|------------------|-------------|
| A. JOBSEEKERS | | | | |
| 1. Unemployed jobseekers | 31 378 | 33 052 | -1 674 | -5,1 |
| of whom fully laid off | 3 017 | 5 536 | -2 519 | -45,5 |
| 2. On reduced working week | 707 | 990 | -283 | -28,6 |
| 3. Those who have work | 21 270 | 19 539 | 1 731 | 8,9 |
| of whom in the general labour market | 19 469 | 17 936 | 1 533 | 8,5 |
| of whom employed through employment services | 1 801 | 1 603 | 198 | 12,4 |
| 4. Persons outside the labour force | 29 252 | 31 047 | -1 795 | -5,8 |
| of whom in services promoting employment | 2 418 | 2 611 | -193 | -7,4 |
| of whom in training | 24 502 | 25 920 | -1 418 | -5,5 |
| 1-4 Total of jobseekers | 82 607 | 84 628 | -2 021 | -2,4 |
| C. PARTICIPATING IN SERVICES | | | | |
| 1. Employed by the State | 7 | 5 | 2 | 40,0 |
| 2. Employed by municipalities | 465 | 359 | 106 | 29,5 |
| 3. Employed by the private sector | 1 635 | 1 283 | 352 | 27,4 |
| 1-3 Total number of employed people | 2 107 | 1 647 | 460 | 27,9 |
| 4. Labour market training | 9 355 | 9 420 | -65 | -0,7 |
| 5. Training | 116 | 224 | -108 | -48,2 |
| 6. Engaged in work/training trials | 1 168 | 1 129 | 39 | 3,5 |
| 7. As a job alternation substitute | 63 | 57 | 6 | 10,5 |
| 8. Rehabilitative work | 1 157 | 1 378 | -221 | -16,0 |
| 9. Self-motivated studies supported by unemployment benefit | 13 336 | 15 156 | -1 820 | -12,0 |
| 1-9 Total number of people participating in services | 27 302 | 29 011 | -1 709 | -5,9 |
| D. STRUCTURE OF UNEMPLOYMENT | | | | |
| 1. Unemployed women | 15 413 | 15 911 | -498 | -3,1 |
| 2. Unemployed men | 15 965 | 17 141 | -1 176 | -6,9 |
| 3. Under 25 years old | 2 030 | 2 349 | -319 | -13,6 |
| 4. Over 50 years old | 8 464 | 8 295 | 169 | 2,0 |
| 5. Unemployed over a year | 10 630 | 6 416 | 4 214 | 65,7 |
| E. UNEMPLOYMENT SECURITY | | | | |
| 1. Unemployed members of employees' unemployment funds | 6 267 | 7 340 | -1 073 | -14,6 |
| II EMPLOYMENT SITUATION DURING THE MONTH | | | | |
| 1. Unemployed jobseekers | 35 868 | 37 761 | -1 893 | -5,0 |
| 2. Other jobseekers | 49 507 | 49 712 | -205 | -0,4 |
| 1-2 Total number of jobseekers | 85 375 | 87 473 | -2 098 | -2,4 |
| 4. Started spell of unemployment | 3 912 | 4 843 | -931 | -19,2 |
| 5. Completed spell of unemployment | 4 990 | 5 312 | -322 | -6,1 |
| 6. New jobs found through employment services | 271 | 287 | -16 | -5,6 |
| 7. New entrants to labour market training | 2 038 | 2 109 | -71 | -3,4 |



Regional table

UNEMPLOYED JOBSEEKERS AND JOBS VACANT BY ELY CENTRE AT THE END OF 2021 SEPTEMBER
WHOLE COUNTRY

| ELY centre | Workforce | Unemployed jobseekers | | | | | | | Unemployed over a year | Disabled and chron. ill | Jobs vacant |
|--------------------|------------------|-----------------------|----------------|----------------|----------------|-----------------------|-----------------------|----------------------|---------------------------|-------------------------------|----------------|
| | | % of workforce | Total | Men | Women | Under 20 years old | Under 25 years old | Over 50 years old | | | |
| Uusimaa | 880 161 | 11,0 | 96 383 | 52 746 | 43 637 | 1 677 | 9 253 | 34 296 | 44 434 | 8 286 | 22 707 |
| Southwest Finland | 228 633 | 9,3 | 21 375 | 12 093 | 9 282 | 505 | 2 487 | 7 957 | 7 708 | 2 628 | 7 141 |
| Satakunta | 96 959 | 8,9 | 8 597 | 5 033 | 3 564 | 230 | 963 | 3 887 | 3 160 | 1 172 | 2 223 |
| Häme | 170 771 | 11,4 | 19 445 | 11 216 | 8 229 | 455 | 2 265 | 8 190 | 8 808 | 3 132 | 5 932 |
| Pirkanmaa | 247 562 | 9,3 | 22 987 | 12 978 | 10 009 | 539 | 2 723 | 8 157 | 8 339 | 2 598 | 9 243 |
| Southeast Finland | 128 857 | 10,6 | 13 628 | 7 823 | 5 805 | 359 | 1 390 | 6 163 | 4 745 | 1 738 | 2 609 |
| South Savo | 56 747 | 9,6 | 5 434 | 3 315 | 2 119 | 149 | 607 | 2 493 | 1 921 | 1 068 | 1 783 |
| North Savo | 112 391 | 9,5 | 10 698 | 6 444 | 4 254 | 262 | 1 353 | 4 454 | 4 731 | 1 709 | 3 758 |
| North Karelia | 71 372 | 12,4 | 8 868 | 5 304 | 3 564 | 216 | 996 | 3 997 | 3 727 | 1 236 | 1 446 |
| Central Finland | 124 466 | 11,7 | 14 575 | 8 528 | 6 047 | 381 | 2 044 | 5 412 | 6 158 | 1 604 | 3 191 |
| South Ostrobothnia | 86 161 | 6,0 | 5 181 | 3 124 | 2 057 | 144 | 699 | 2 091 | 1 426 | 984 | 2 832 |
| Ostrobothnia | 112 960 | 6,0 | 6 809 | 4 008 | 2 801 | 198 | 804 | 2 700 | 2 430 | 1 006 | 2 575 |
| North Ostrobothnia | 187 001 | 10,0 | 18 632 | 10 728 | 7 904 | 568 | 2 527 | 6 464 | 7 533 | 2 386 | 6 186 |
| Kainuu | 30 941 | 8,9 | 2 766 | 1 730 | 1 036 | 77 | 304 | 1 363 | 753 | 498 | 1 175 |
| Lapland | 80 787 | 10,9 | 8 820 | 5 296 | 3 524 | 184 | 897 | 3 843 | 3 128 | 1 152 | 4 476 |
| Åland | 15 115 | 5,4 | 814 | 439 | 375 | ... | 85 | 287 | 269 | ... | 296 |
| Abroad | 0 | 0,0 | 300 | 197 | 103 | ... | 11 | 82 | 109 | ... | 2 604 |
| Total | 2 630 884 | 10,1 | 265 314 | 151 003 | 114 311 | 5 970 | 29 410 | 101 836 | 109 381 | 31 237 | 80 177 |



Information about the website

On this website you will find the latest statistics from the Ministry of Economic Affairs and Employment's monthly Employment Bulletin. You can access a .pdf version of the current and previous months' Employment Bulletin by following the link on the right. The Employment Bulletin is based on the data from the MEAE's Employment Service Statistics. The Ministry of Economic Affairs and Employment compiles statistics on the clients of the Employment and economic development offices (TE offices), including registered job-seekers, labour market policy services, and job vacancies reported to TE offices by employers. The data is collected from the customer service registry (URA) used by the TE offices. This means that the data used by MEAE Employment Service Statistics is completely registry-based. The statistical data covers all persons, services, and open vacancies in the aforementioned groups, as separately defined in the registry by the classifications and variables for the statistical period in question.

Owing to seasonal variations, the Employment Bulletin always includes a comparison with the corresponding month in the previous year. The descriptors used in the Bulletin are also available in a table format. The Employment Bulletins are published at the end of the subsequent calendar month. The official date of publication is announced in advance.

The following symbols have been used:

. Category not applicable

... Data subject to secrecy

Links:

- **Employment Service Statistics online:**

- <https://www.tem.fi/en/employment-bulletin-and-employment-service-statistics>

- **Employment Service Statistics, Description and Quality Description**

- <https://www.tem.fi/en/release-dates-of-statistics-and-description-and-quality-description>

- **You can access key information from MEAE's Employment Service Statistics by visiting the Statistics Finland's StatFin database:**

- https://pxnet2.stat.fi/PXWeb/pxweb/en/StatFin/StatFin__tym__tyonv/

- **The Employment Service Statistics data is also available from the MEAE Publications page (only available in Finnish).**

- <https://www.tem.fi/tyopoliittinen-aikakauskirja>

- **Joint monthly report from MEAE and Statistics Finland**

- https://tilastokeskus.fi/til/tyti/tie_en.html

- **Comparison between the statistics of Statistics Finland and the Ministry of Economic Affairs and Employment**

- https://www.stat.fi/til/tyti/tyti_2019-09-13_men_001_en.html

- **Comparison between the Job Vacancy Survey of Statistics Finland and Employment Service Statistics of the Ministry of Economic Affairs and Employment**

- https://tilastokeskus.fi/til/atp/atp_2017-01-02_men_001.html

- **Local government pilots on employment (In Finnish):**

- [https://app.powerbi.com/view?](https://app.powerbi.com/view?r=eyJrJoiMzA0M2ViOWQtOTIwYy00ZjZjLWJjOTgtZDRkOGFmMTc0NGExIiwidCI6ImQ5NTk1MWE2LWWRmZDMtNGE3NC05YWJiLWYyYjYjg5ZDY3MSIsImMiOiJh9)

- [r=eyJrJoiMzA0M2ViOWQtOTIwYy00ZjZjLWJjOTgtZDRkOGFmMTc0NGExIiwidCI6ImQ5NTk1MWE2LWWRmZDMtNGE3NC05YWJiLWYyYjYjg5ZDY3MSIsImMiOiJh9](https://app.powerbi.com/view?r=eyJrJoiMzA0M2ViOWQtOTIwYy00ZjZjLWJjOTgtZDRkOGFmMTc0NGExIiwidCI6ImQ5NTk1MWE2LWWRmZDMtNGE3NC05YWJiLWYyYjYjg5ZDY3MSIsImMiOiJh9)

Instructions for referencing:

Official Statistics of Finland (OSF): Ministry of Economic Affairs and Employment / Employment Service Statistics. ISSN 1797-3694 202Y:MM, Employment Bulletin, MONTH 202Y. Helsinki: Ministry of Economic Affairs and Employment (date of reference). Available at:
<https://www.temtyollisyyskatsaus.fi>



Contact information

Ministry of Economic Affairs and Employment

Employment and Well-Functioning Markets Department

Kaisa-Mari Kuusela, +358 29 504 8294

Petri Syvänen, +358 29 504 8050

Hilkka Kattelus, +358 29 504 8047

E-mail: [firstname.lastname\(at\)gov.fi](mailto:firstname.lastname(at)gov.fi) /
[temtyonvalitystilasto\(at\)gov.fi](mailto:temtyonvalitystilasto(at)gov.fi)

<https://www.temtyollisyyskatsaus.fi>

ISSN: 1797-3694 (online publication)

