



# Employment Bulletin

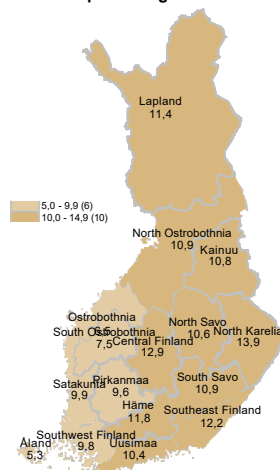
December 2021



Ministry of Economic Affairs  
and Employment of Finland

## In December, 275,300 unemployed jobseekers

Unemployed jobseekers' percentage of the workforce by ELY centre



At the end of December, a total of 275,300 unemployed jobseekers were registered at the Employment and Economic Development Offices and municipalities participating in the local government pilots on employment. This is 82,000 less than a year earlier, but 17,600 more than in December two years ago. The number of unemployed jobseekers increased by 22,600 from the previous month. Unemployed jobseekers accounted for 10.5% of the labour force, which is 3.1 percentage points less than the year before. In 2021, the average number of unemployed jobseekers was 298,600, or 43,800 less than the year before. The average number of unemployed people who were laid off was 37,300, or 40,600 less than the year before. On average, unemployed jobseekers accounted for 11.4% of the labour force in 2021; down by 1.6 percentage points from the previous year. The figures are from the Employment Service Statistics of the Ministry of Economic Affairs and Employment.

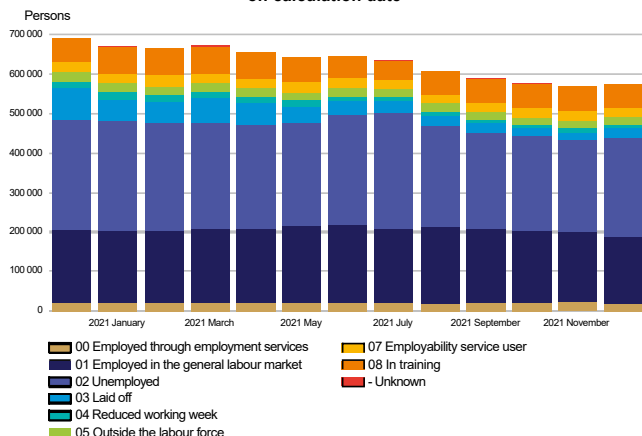
### Trends:

- Total number of all jobseekers decreased by 119,700
- The number of unemployed jobseekers decreased by 82,000 from the previous year
- The number of people fully laid off decreased by 52,400
- Services included in the activation rate had 3,500 less people than a year ago
- 40,200 more new job vacancies compared to the previous year



## All jobseekers

Jobseekers by group  
on calculation date



### The total number of jobseekers decreased

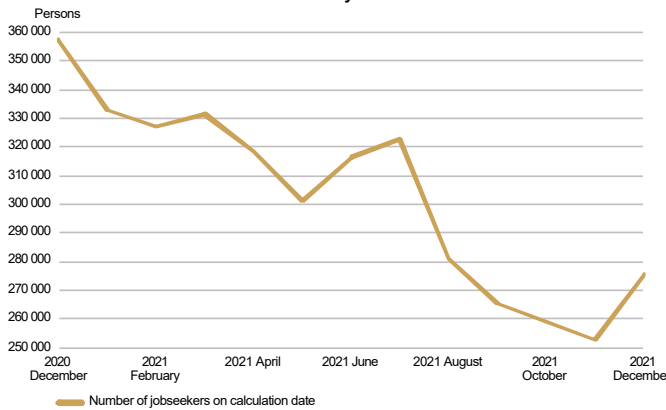
At the end of December, the number of jobseekers registered at the Employment and Economic Development Offices and municipalities participating in the local government pilots on employment totalled 570,800, down 119,700 on the previous year. Of the jobseekers, 291,300 were men and 279,500 were women. Compared to the situation a year ago, the number of men decreased by 66,800 and the number of women by 52,900. Of the jobseekers, 236,200 were customers of municipalities participating in the local government pilots on employment.

Of the jobseekers, 188,200 were employed, 167,100 of them were on the open labour market and 21,100 were employed through the services organised by the employment and economic development administration and local government pilots on employment. The number of jobseekers outside the labour force was 98,600, of whom 23,300 were in services promoting employment and 56,300 in training. Of the jobseekers, 275,300 were unemployed jobseekers, which is 82,000 less than the year before. In December, 25,400 of unemployed jobseekers were fully laid off, which is 6,700 more than in November. The number of people fully laid off decreased by 52,400 from December a year earlier. Furthermore, jobseekers on a reduced working week numbered 8,700, representing a decrease of 10,100 from the year before.



## Unemployed jobseekers

**UNEMPLOYED JOBSEEKERS**  
monthly

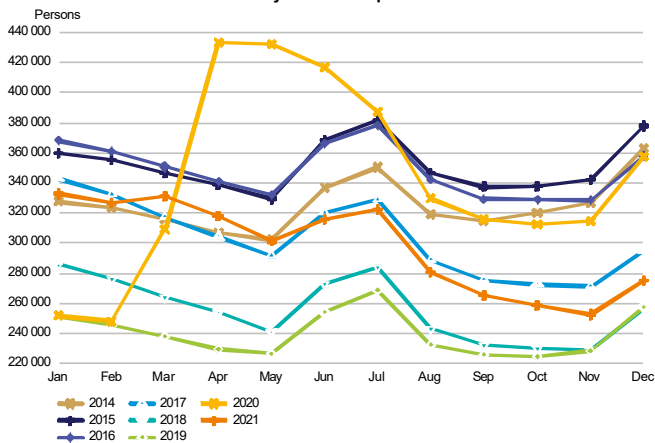


### Decrease in unemployed jobseekers in December

At the end of December, the number of unemployed jobseekers registered at the Employment and Economic Development Offices and municipalities participating in the local government pilots on employment totalled 275,300, down 82,000 on the previous year. Compared with November, the number of unemployed jobseekers increased by 22,600. Of the unemployed jobseekers, 144,700 were customers of municipalities participating in the local government pilots on employment. The number of new job searches among unemployed jobseekers totalled 15,700, down 5,700 from December a year ago. In December, the number of starting periods of unemployment totalled 47,400, representing a decrease of 32,800 on the year before. The number of starting periods of unemployment increased by 15,100 from November. The number of starting periods is always greater than the number of job searches because new unemployment periods are also registered from the existing groups of jobseekers.

The number of foreign citizens among unemployed jobseekers totalled 32,200, down 5,500 from December a year ago. Of these foreign unemployed jobseekers, EU/EEA citizens accounted for 9,700 at the end of December, down 2,500 from the year before.

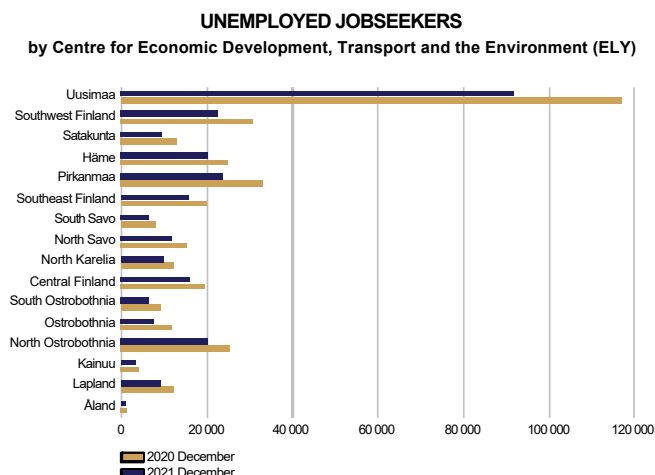
**UNEMPLOYED JOBSEEKERS**  
month by month comparison



In December, 25,400 of unemployed jobseekers were fully laid off, which is 6,700 more than in November. The number of people fully laid off decreased by 52,400 from December a year earlier. In December, the number of job searches among those fully laid off totalled 4,700, representing a decrease of 4,800 on the year before. The number of starting periods of full lay-offs was 11,400, down 27,400 from December a year ago. The number of starting periods of full lay-offs increased by 6,100 from November. The number of people fully laid off decreased in all occupational groups, with the exception of armed forces. The greatest decreases were in the groups of 'unknown' (-10,300), craft and related trades workers (-10,100), service and sales workers (-9,700), and plant and machine operators, and assemblers (-5,800), and professionals (-5,000).



### Unemployed jobseekers by region



### Unemployment decreased in the areas of all ELY Centres

Compared to the same period in the previous year, the number of unemployed jobseekers decreased in December in the areas of all Centres for Economic Development, Transport and the Environment (ELY Centres); the most in Ostrobothnia (-37%), South Ostrobothnia (-29%), Pirkanmaa (-28%), Southwest Finland (-27%) and Satakunta (-26%). The number of unemployed jobseekers decreased the least in Kainuu (-13%), Central Finland (-18%), North Karelia (-18%), Häme (-19%) and South Savo (-19%). The number of unemployed jobseekers fell the most in Åland, by 43%. Compared to November, the number of unemployed jobseekers increased in the areas of all ELY Centres; the most in South Ostrobothnia (20%), Ostrobothnia (14%), Kainuu (13%), Central Finland (13%) and Southeast Finland (13%). The number of unemployed jobseekers increased the least in Uusimaa (5%).

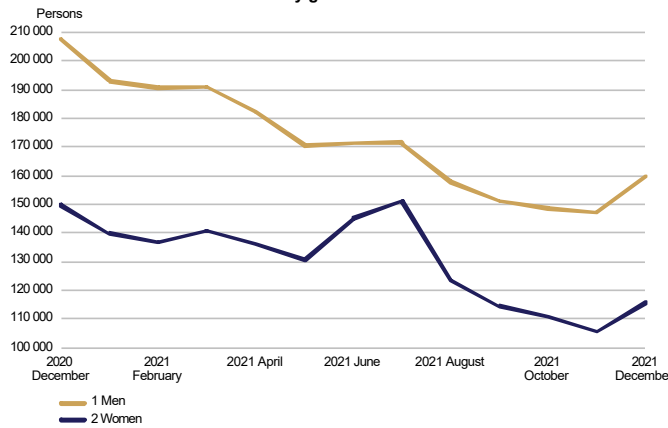
### Unemployed jobseekers and jobs vacant in Employment and Economic Development Office by ELY centre

ELY centre	Unemployed jobseekers		Change		Of the Unemployed jobseekers' fully laid off		Jobs vacant		Change			
	Dec 2021	Nov 2021	Dec 2021	Dec 2020	Dec 2021	Dec 2020	Dec 2021	Nov 2021	Dec 2021	Dec 2020		
Uusimaa	91 867	87 863	116 993	-25 126	-21	7 886	10,4	22 468	22 752	12 332	10 136	82
Southwest Finland	22 424	20 454	30 866	-8 442	-27	2 356	9,8	7 395	7 149	3 829	3 566	93
Satakunta	9 561	8 570	12 969	-3 408	-26	879	9,9	2 375	1 889	1 364	1 011	74
Häme	20 105	18 617	24 784	-4 679	-19	1 747	11,8	5 894	5 702	2 485	3 409	137
Pirkanmaa	23 869	21 473	32 972	-9 103	-28	2 153	9,6	9 335	8 707	4 499	4 836	107
Southeast Finland	15 663	13 862	20 045	-4 382	-22	1 366	12,2	2 784	2 568	1 755	1 029	59
South Savo	6 213	5 563	7 699	-1 486	-19	548	10,9	2 367	1 771	1 105	1 262	114
North Savo	11 880	10 719	15 359	-3 479	-23	1 142	10,6	3 619	3 865	2 401	1 218	51
North Karelia	9 954	9 032	12 136	-2 182	-18	727	13,9	1 903	1 307	1 023	880	86
Central Finland	16 033	14 187	19 481	-3 448	-18	1 322	12,9	3 268	2 976	2 540	728	29
South Ostrobothnia	6 453	5 378	9 105	-2 652	-29	935	7,5	4 657	3 026	2 801	1 856	66
Ostrobothnia	7 380	6 465	11 641	-4 261	-37	724	6,5	4 610	2 413	2 106	2 504	119
North Ostrobothnia	20 331	18 245	25 450	-5 119	-20	2 060	10,9	6 927	5 676	3 722	3 205	86
Kainuu	3 335	2 944	3 828	-493	-13	333	10,8	1 083	1 089	823	260	32
Lapland	9 235	8 350	12 195	-2 960	-24	981	11,4	3 534	3 814	1 771	1 763	100
Åland	801	745	1 409	-608	-43	113	5,3	332	329	127	205	161
Abroad	238	252	428	-190	-44	89	.	2 221	2 099	2 501	-280	-11
<b>WHOLE COUNTRY</b>	<b>275 344</b>	<b>252 721</b>	<b>357 362</b>	<b>-82 018</b>	<b>-23</b>	<b>25 361</b>	<b>10,5</b>	<b>84 772</b>	<b>77 132</b>	<b>47 184</b>	<b>37 588</b>	<b>80</b>



## Unemployed jobseekers by gender and age-group

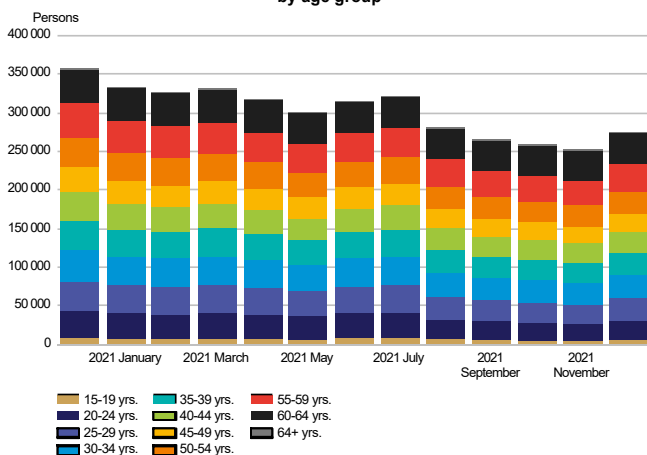
**UNEMPLOYED JOBSEEKERS  
by gender**



### Unemployment decreased by an equal percentage among men and women

Of the unemployed jobseekers, 159,600 (58%) were men and 115,700 (42%) were women, indicating an increase of 12,500 for men and 10,100 for women from the figures for November. Compared with December a year ago, unemployment decreased by 47,900 (-23%) among men and by 34,100 (-23%) among women.

**UNEMPLOYED JOBSEEKERS  
by age group**



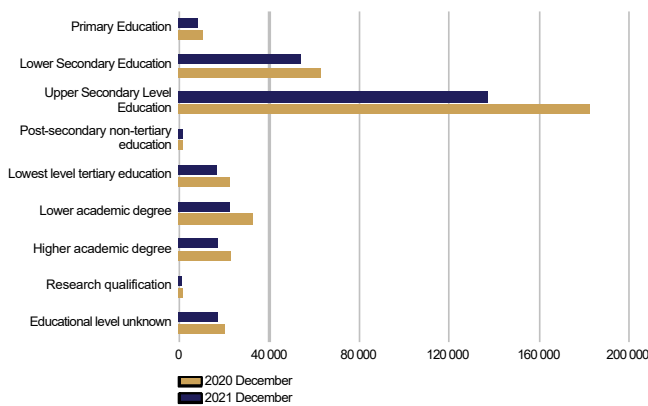
### Unemployment decreased in all age groups under the age of 65

At the end of December, unemployed jobseekers under 25 years of age numbered 31,200, representing a decrease of 12,600 from December a year ago. Youth unemployment increased from November by 4,600. For those under 20, the number of unemployed was 6,400. Among those over 50, the number of unemployed was 105,400, representing a decrease of 21,800 on the year before. Among those over 55, the number of unemployed was 77,000, representing a decrease of 11,300 on the year before. Unemployment decreased the most among those under 30 (-28%) and those between 50 and 54 (-27%). Unemployment rose from the previous year only among those over 64 years of age (5%). Compared with November, unemployment increased in all age groups; the most among those under 25 (17%).



## Unemployed jobseekers by levels of education and occupational group

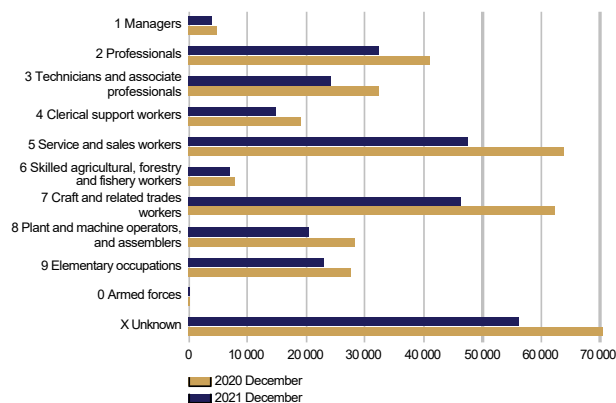
**UNEMPLOYED JOBSEEKERS  
by level of education**



### Unemployment decreased at all levels of education

Examined by level of education, unemployment decreased from December last year at all levels of education; the decrease was greatest among those with lower-degree level tertiary education (-32%), post-secondary non-tertiary education (-29%), lowest level of tertiary education (-26%) and higher-degree level tertiary education (-25%). Unemployment fell the least among those with higher level basic qualifications (-14%), level of education 'unknown' (-16%) and doctorate or equivalent level tertiary education (-16%).

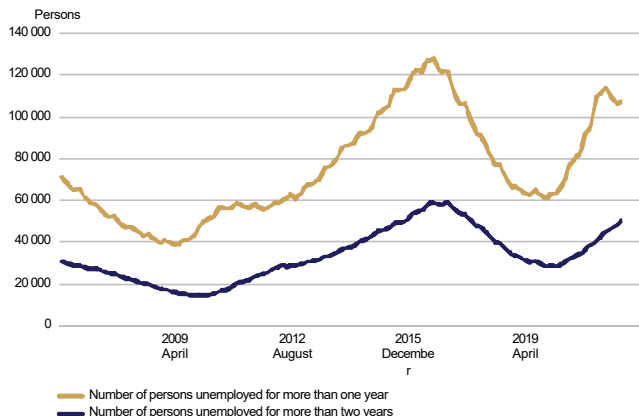
**UNEMPLOYED JOBSEEKERS  
by occupational group**



### Unemployment decreased in all occupational groups

Examined by occupation, unemployment decreased in all groups from December last year; the most in the groups of service and sales workers (-16,300), craft and related trades workers (-16,000), 'unknown' (-14,300), professionals (-8,800) and technicians and associate professionals (-8,200). Unemployment decreased the least in the groups of armed forces (-35), skilled agricultural, forestry and fishery workers (-700) and managers (-1,000).

**LONG-TERM UNEMPLOYED  
at the end of the month**

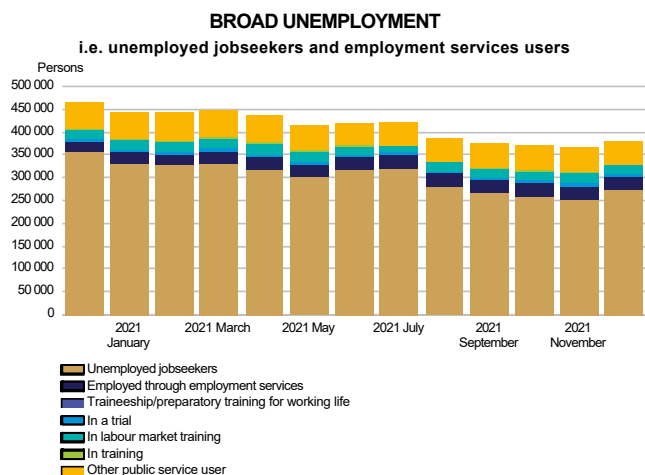


### Increase in long-term unemployment

At the end of December, the number of long-term unemployed who had been unemployed without interruption for more than a year amounted to 107,300, up 15,400 on the previous year. Of the long-term unemployed, 64,100 were men and 43,100 were women. The number of men increased by 9,300 (17%) from the previous year and the number of women by 6,000 (16%). The number of long-term unemployed who had been unemployed without interruption for more than two years numbered 50,000, which is 13,700 more than a year ago.



## Services

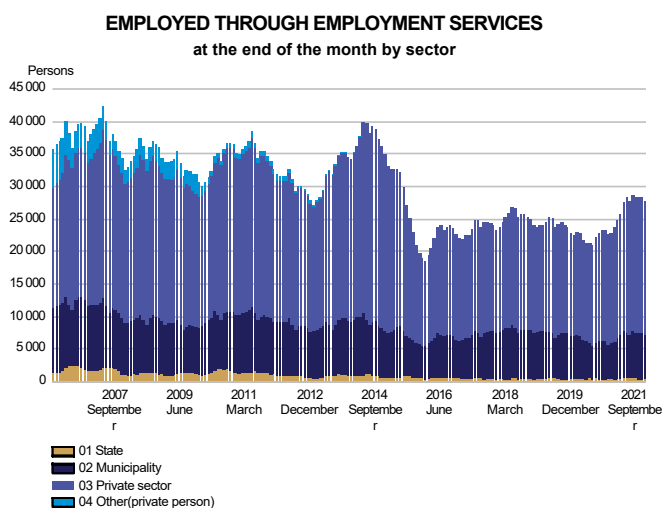


### Decrease in the number of persons covered by services

At the end of December, the number of persons covered by services included in the activation rate amounted to 104,200, down 3,500 on the previous year. Compared with November, the number of persons covered by such services decreased by 10,800. Of those covered by services, 56,400 were customers of municipalities participating in the local government pilots on employment. The activation rate at the end of December was 27.5%, which is 4.3 percentage points higher than a year earlier. In all, 3.7% of the labour force were covered by these services.

Of those covered by services, the number of men was 49,900, down 1,800 on the previous year. The number of women covered by these services was 54,300, down 1,700 on the previous year.

Broad unemployment, or the total number of unemployed jobseekers and those covered by services, was 379,500 at the end of December. This is 85,500 less than a year earlier. The decrease in broad unemployment was mainly due to a decrease in the number of unemployed.



### The number of placements increased in local government and the private sector

At the end of December, the number of persons claiming pay subsidies, employed by the central government or receiving start-up grants totalled 27,700, which is 5,100 more than the year before. Of those in placements, 2% were in central government jobs, 24% in local government jobs and 74% in the private sector. Since December last year, the number of placements had increased by 28% in local government and 22% in the private sector. Placements in central government decreased by 4%. Of those employed, 52% were men. Placements for men increased by 2,900, and those for women by 2,200 from the previous year.





## Labour market training, training and self-motivated studies

**PERSONS IN LABOUR MARKET TRAINING**  
in target profession at the end of the month

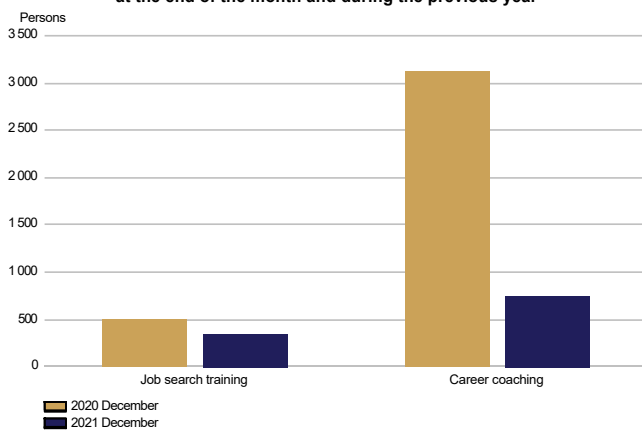


### Number of persons in labour market training decreased

At the end of December, labour market training was attended by 19,000 students, down 1,100 on the previous year. Of the students, 9,200 were men and 9,800 were women. The number of men decreased by 500, and the number of women by 600 from December last year. During December, 1,900 new students began labour market training, representing a decrease of 100 on the year before.

Based on target occupation, the largest subgroup within the category of 'unknown' were people in integration training (6,300), which is 400 less than the year before.

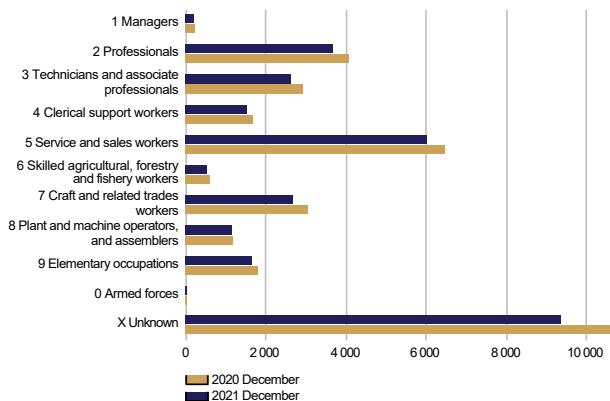
**IN TRAINING**  
at the end of the month and during the previous year



### The number of persons in training decreased

At the end of December, 1,100 persons were in training, which is 2,500 less than the year before. Of those in training, 600 were men and 500 were women. Career coaching was provided to 700 participants, which is 2,400 less than a year earlier. The number of participants in job search training decreased by 100 from the year before.

**IN SELF-MOTIVATED STUDIES**  
in person's profession at the end of the month



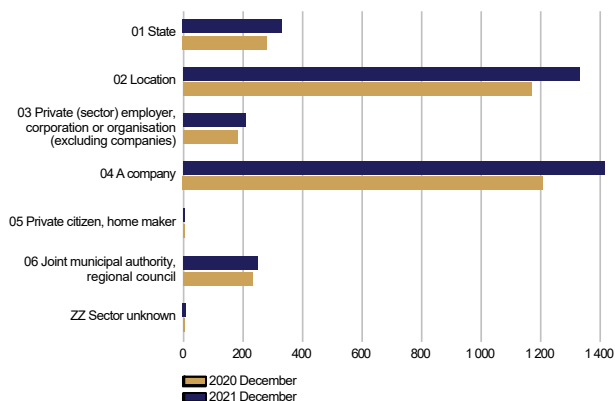
### The number of people in self-motivated study decreased from the previous year

Self-motivated studies supported by unemployment benefits were attended by a total of 29,400 people, representing a decrease of 3,400 on the year before. The number of men receiving unemployment benefits for studies was 11,500, down 1,900 on the previous year. Among women, the number was 17,900, representing a decrease of 1,500 on the year before. Occupation was undetermined in case of 8,400 persons in the group of 'unknown', down 1,000 on the previous year.



## Job alternation, rehabilitative work and trials

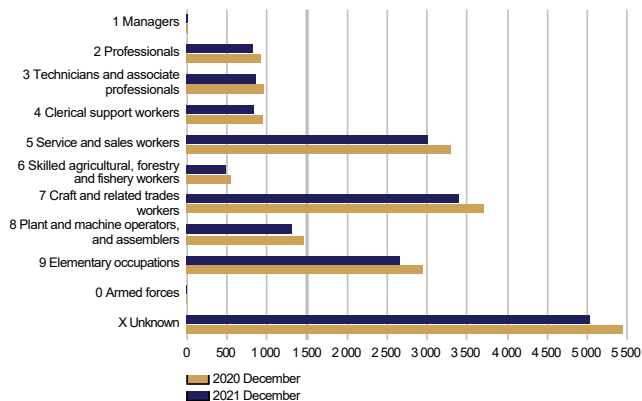
**AS A JOB ALTERNATION SUBSTITUTE**  
at the end of the month and during the previous year by sector



### The number of job alternation substitutes increased

A total of 3,500 persons were job alternation substitutes at the end of December, which is 500 more than a year earlier. Of the substitutes, 1,200 were men and 2,300 were women. The number of men increased by 200 and the number of women by 300 from the previous year.

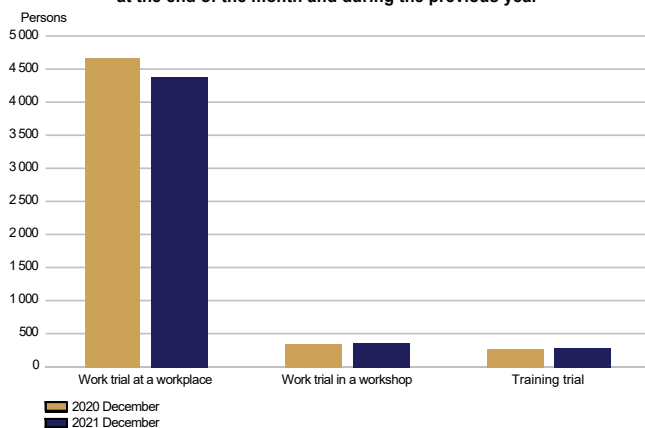
**REHABILITATIVE WORK ACTIVITIES**  
at the end of the month and during the previous year



### Fewer participants in rehabilitative work activities than in the previous year

A total of 18,400 persons participated in rehabilitative work activities at the end of December, which is 1,800 less than a year earlier. Of the participants, 10,500 were men and 8,000 were women. The number of men decreased by 1,100 and the number of women by 700 from the previous year.

**IN TRIALS**  
at the end of the month and during the previous year



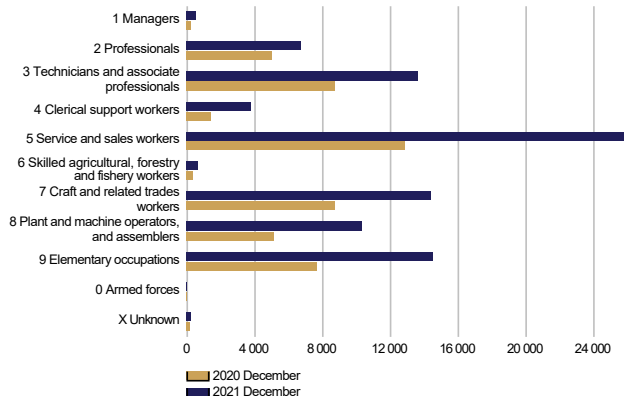
### Participation in work and training trials decreased

Work and training trials had a total of 5,100 participants at the end of December, which is 200 less than the year before. Of the participants, 2,600 were men and 2,400 were women. The number of men and women decreased by 100 each from the previous year.



## Jobs vacant

**NEW JOB VACANCIES**  
during the month and during the previous year



### Increase in the number of new vacancies from the year before

The number of new vacancies reported to Employment and Economic Development Offices and municipalities participating in the local government pilots on employment during December totalled 90,600, which is 40,200 more than in December last year. In all, the number of unfilled vacancies in December amounted to 164,500, which is 71,600 more than a year ago. A total of 10,000 of these vacancies were filled during December, 2,400 of them through Employment and Economic Development Offices. A total of 64,400 vacancies were closed for applications because the application period had ended or because there was a sufficient number of applicants. In addition, a total of 5,700 vacancies were cancelled and 1,900 vacancies could not be filled. The number of vacancies remaining unfilled at Employment and Economic Development Offices and in local government pilots at the end of December was 84,800, up 37,600 on the previous year.

The number of new vacancies had increased for all occupational groups; the greatest increases were in the groups of service and sales workers (13,100), elementary occupations (6,800), craft and related trades workers (5,600), plant and machine operators, and assemblers (5,200) and associate professionals and technicians (4,900).



### Summary table

EMPLOYMENT SITUATION AT THE END OF 2021 DECEMBER (I) AND  
ACTIVITIES OF EMPLOYMENT AND ECONOMIC DEVELOPMENT OFFICES DURING DECEMBER (II)  
WHOLE COUNTRY

I EMPLOYMENT SITUATION AT THE END OF MONTH	Dec-21	Dec-20	CHANGE NUMBER	CHANGE %
<b>A. JOBSEEKERS</b>				
1. Unemployed jobseekers	275 344	357 362	-82 018	-23,0
of whom fully laid off	25 361	77 753	-52 392	-67,4
2. On reduced working week	8 678	18 824	-10 146	-53,9
3. Those who have work	188 178	205 997	-17 819	-8,7
of whom in the general labour market	167 118	187 286	-20 168	-10,8
of whom employed through employment services	21 060	18 711	2 349	12,6
4. Persons outside the labour force	98 627	108 316	-9 689	-8,9
of whom in services promoting employment	23 332	25 327	-1 995	-7,9
of whom in training	56 272	61 015	-4 743	-7,8
<b>1-4 Total of jobseekers</b>	<b>570 827</b>	<b>690 499</b>	<b>-119 672</b>	<b>-17,3</b>
<b>B. LABOUR DEMAND</b>				
1. Jobs vacant	84 772	47 184	37 588	79,7
of those notified for over a month	29 706	18 087	11 619	64,2
of those notified for over 2 months	17 896	11 430	6 466	56,6
<b>C. PARTICIPATING IN SERVICES</b>				
1. Employed by the State	432	448	-16	-3,6
2. Employed by municipalities	6 816	5 320	1 496	28,1
3. Employed by the private sector	20 468	16 845	3 623	21,5
<b>1-3 Total number of employed people</b>	<b>27 716</b>	<b>22 613</b>	<b>5 103</b>	<b>22,6</b>
4. Labour market training	18 999	20 141	-1 142	-5,7
5. Training	1 094	3 624	-2 530	-69,8
6. Engaged in work/training trials	5 069	5 276	-207	-3,9
7. As a job alternation substitute	3 537	3 080	457	14,8
8. Rehabilitative work	18 436	20 257	-1 821	-9,0
9. Self-motivated studies supported by unemployment benefit	29 351	32 708	-3 357	-10,3
<b>1-9 Total number of people participating in services</b>	<b>104 202</b>	<b>107 699</b>	<b>-3 497</b>	<b>-3,2</b>
<b>D. STRUCTURE OF UNEMPLOYMENT</b>				
1. Unemployed women	115 716	149 791	-34 075	-22,7
2. Unemployed men	159 628	207 571	-47 943	-23,1
3. Under 25 years old	31 168	43 726	-12 558	-28,7
4. Over 50 years old	105 414	127 164	-21 750	-17,1
5. Unemployed over a year	107 268	91 896	15 372	16,7
6. Foreign unemployed	32 172	37 651	-5 479	-14,6
<b>E. UNEMPLOYMENT SECURITY</b>				
1. Unemployed members of employees' unemployment funds	107 229	168 491	-61 262	-36,4
<b>II EMPLOYMENT SITUATION DURING THE MONTH</b>				
1. Unemployed jobseekers	290 248	380 620	-90 372	-23,7
2. Other jobseekers	301 902	332 760	-30 858	-9,3
<b>1-2 Total number of jobseekers</b>	<b>592 150</b>	<b>713 380</b>	<b>-121 230</b>	<b>-17,0</b>
3. Vacancies during a month	164 470	92 832	71 638	77,2
New vacancies during a month	90 585	50 409	40 176	79,7
Vacancies filled during a month	9 956	6 509	3 447	53,0
of those filled with job-seekers at the Employment Service	2 371	2 235	136	6,1
Vacancies application period ended or sufficient number of applicants	64 367	37 704	26 663	70,7
Vacancies cancelled or could not be filled	7 600	3 007	4 593	152,7
4. Started spell of unemployment	47 431	80 200	-32 769	-40,9
5. Completed spell of unemployment	20 656	40 166	-19 510	-48,6
6. New jobs found through employment services	1 993	1 985	8	0,4
7. New entrants to labour market training	1 864	1 974	-110	-5,6



## Foreigners' summary table

FOREIGNERS' EMPLOYMENT SITUATION AT THE END OF 2021 DECEMBER (I) AND  
ACTIVITIES OF EMPLOYMENT AND ECONOMIC DEVELOPMENT OFFICES DURING DECEMBER (II)  
WHOLE COUNTRY

I EMPLOYMENT SITUATION AT THE END OF MONTH	Dec-21	Dec-20	CHANGE NUMBER	CHANGE %
<b>A. JOBSEEKERS</b>				
1. Unemployed jobseekers	32 172	37 651	-5 479	-14,6
of whom fully laid off	3 025	6 869	-3 844	-56,0
2. On reduced working week	553	1 118	-565	-50,5
3. Those who have work	20 290	19 308	982	5,1
of whom in the general labour market	18 477	17 698	779	4,4
of whom employed through employment services	1 813	1 610	203	12,6
4. Persons outside the labour force	27 221	28 423	-1 202	-4,2
of whom in services promoting employment	2 372	2 438	-66	-2,7
of whom in training	22 499	23 517	-1 018	-4,3
<b>1-4 Total of jobseekers</b>	<b>80 236</b>	<b>86 500</b>	<b>-6 264</b>	<b>-7,2</b>
<b>C. PARTICIPATING IN SERVICES</b>				
1. Employed by the State	6	5	1	20,0
2. Employed by municipalities	460	373	87	23,3
3. Employed by the private sector	1 641	1 324	317	23,9
<b>1-3 Total number of employed people</b>	<b>2 107</b>	<b>1 702</b>	<b>405</b>	<b>23,8</b>
4. Labour market training	8 459	8 675	-216	-2,5
5. Training	105	168	-63	-37,5
6. Engaged in work/training trials	1 121	1 048	73	7,0
7. As a job alternation substitute	66	50	16	32,0
8. Rehabilitative work	1 059	1 269	-210	-16,5
9. Self-motivated studies supported by unemployment benefit	12 123	13 832	-1 709	-12,4
<b>1-9 Total number of people participating in services</b>	<b>25 040</b>	<b>26 744</b>	<b>-1 704</b>	<b>-6,4</b>
<b>D. STRUCTURE OF UNEMPLOYMENT</b>				
1. Unemployed women	15 946	17 722	-1 776	-10,0
2. Unemployed men	16 226	19 929	-3 703	-18,6
3. Under 25 years old	2 065	2 623	-558	-21,3
4. Over 50 years old	8 585	9 348	-763	-8,2
5. Unemployed over a year	10 570	7 578	2 992	39,5
<b>E. UNEMPLOYMENT SECURITY</b>				
1. Unemployed members of employees' unemployment funds	6 666	9 356	-2 690	-28,8
<b>II EMPLOYMENT SITUATION DURING THE MONTH</b>				
1. Unemployed jobseekers	34 203	39 743	-5 540	-13,9
2. Other jobseekers	48 389	48 468	-79	-0,2
<b>1-2 Total number of jobseekers</b>	<b>82 592</b>	<b>88 211</b>	<b>-5 619</b>	<b>-6,4</b>
4. Started spell of unemployment	6 150	8 448	-2 298	-27,2
5. Completed spell of unemployment	2 356	2 682	-326	-12,2
6. New jobs found through employment services	165	161	4	2,5
7. New entrants to labour market training	727	821	-94	-11,4



## Regional table

UNEMPLOYED JOBSEEKERS AND JOBS VACANT BY ELY CENTRE AT THE END OF 2021 DECEMBER  
WHOLE COUNTRY

ELY centre	Workforce	Unemployed jobseekers						Unemployed over a year	Disabled and chron. ill	Jobs vacant	
		% of workforce	Total	Men	Women	Under 20 years old	Under 25 years old				Over 50 years old
Uusimaa	880 161	10,4	91 867	50 593	41 274	1 485	8 443	33 116	42 711	8 091	22 468
Southwest Finland	228 633	9,8	22 424	12 802	9 622	498	2 573	8 252	7 925	2 682	7 395
Satakunta	96 959	9,9	9 561	5 638	3 923	297	1 142	4 139	3 151	1 275	2 375
Häme	170 771	11,8	20 105	11 761	8 344	451	2 204	8 597	9 091	3 289	5 894
Pirkanmaa	247 562	9,6	23 869	13 630	10 239	545	2 819	8 425	7 947	2 664	9 335
Southeast Finland	128 857	12,2	15 663	9 216	6 447	425	1 797	6 752	4 675	1 852	2 784
South Savo	56 747	10,9	6 213	3 878	2 335	198	743	2 810	1 902	1 120	2 367
North Savo	112 391	10,6	11 880	7 313	4 567	268	1 508	4 855	4 736	1 779	3 619
North Karelia	71 372	13,9	9 954	6 130	3 824	272	1 175	4 336	3 751	1 345	1 903
Central Finland	124 466	12,9	16 033	9 459	6 574	508	2 383	5 921	6 158	1 664	3 268
South Ostrobothnia	86 161	7,5	6 453	4 025	2 428	189	949	2 559	1 429	1 072	4 657
Ostrobothnia	112 960	6,5	7 380	4 433	2 947	236	922	2 793	2 271	1 050	4 610
North Ostrobothnia	187 001	10,9	20 331	12 156	8 175	701	3 002	6 864	7 377	2 409	6 927
Kainuu	30 941	10,8	3 335	2 165	1 170	133	412	1 590	747	539	1 083
Lapland	80 787	11,4	9 235	5 821	3 414	209	1 010	4 051	3 052	1 163	3 534
Åland	15 115	5,3	801	440	361	...	76	285	244	...	332
Abroad	0	0,0	238	167	71	...	8	69	99	...	2 221
<b>Total</b>	<b>2 630 884</b>	<b>10,5</b>	<b>275 344</b>	<b>159 628</b>	<b>115 716</b>	<b>6 434</b>	<b>31 168</b>	<b>105 414</b>	<b>107 268</b>	<b>32 037</b>	<b>84 772</b>



## Information about the website

On this website you will find the latest statistics from the Ministry of Economic Affairs and Employment's monthly Employment Bulletin. You can access a .pdf version of the current and previous months' Employment Bulletin by following the link on the right. The Employment Bulletin is based on the data from the MEAE's Employment Service Statistics. The Ministry of Economic Affairs and Employment compiles statistics on the clients of the Employment and economic development offices (TE offices), including registered job-seekers, labour market policy services, and job vacancies reported to TE offices by employers. The data is collected from the customer service registry (URA) used by the TE offices. This means that the data used by MEAE Employment Service Statistics is completely registry-based. The statistical data covers all persons, services, and open vacancies in the aforementioned groups, as separately defined in the registry by the classifications and variables for the statistical period in question.

Owing to seasonal variations, the Employment Bulletin always includes a comparison with the corresponding month in the previous year. The descriptors used in the Bulletin are also available in a table format. The Employment Bulletins are published at the end of the subsequent calendar month. The official date of publication is announced in advance.

The following symbols have been used:

. Category not applicable

... Data subject to secrecy

### Links:

- **Employment Service Statistics online:**

- <https://www.tem.fi/en/employment-bulletin-and-employment-service-statistics>

- **Employment Service Statistics, Description and Quality Description**

- <https://www.tem.fi/en/release-dates-of-statistics-and-description-and-quality-description>

- **You can access key information from MEAE's Employment Service Statistics by visiting the Statistics Finland's StatFin database:**

- [https://pxnet2.stat.fi/PXWeb/pxweb/en/StatFin/StatFin\\_\\_tym\\_\\_tyonv/](https://pxnet2.stat.fi/PXWeb/pxweb/en/StatFin/StatFin__tym__tyonv/)

- **The Employment Service Statistics data is also available from the MEAE Publications page (only available in Finnish).**

- <https://www.tem.fi/tyopoliittinen-aikakauskirja>

- **Joint monthly report from MEAE and Statistics Finland**

- [https://tilastokeskus.fi/til/tyti/tie\\_en.html](https://tilastokeskus.fi/til/tyti/tie_en.html)

- **Comparison between the statistics of Statistics Finland and the Ministry of Economic Affairs and Employment**

- [https://www.stat.fi/til/tyti/tyti\\_2019-09-13\\_men\\_001\\_en.html](https://www.stat.fi/til/tyti/tyti_2019-09-13_men_001_en.html)

- **Comparison between the Job Vacancy Survey of Statistics Finland and Employment Service Statistics of the Ministry of Economic Affairs and Employment**

- [https://tilastokeskus.fi/til/atp/atp\\_2017-01-02\\_men\\_001.html](https://tilastokeskus.fi/til/atp/atp_2017-01-02_men_001.html)

- **Local government pilots on employment (In Finnish):**

- [https://app.powerbi.com/view?](https://app.powerbi.com/view?r=eyJrJoiMzA0M2ViOWQtOTIwYy00ZjZjLWJjOTgtZDRkOGFmMTc0NGExIiwidCI6ImQ5NTk1MWE2LWWRmZDMtNGE3NC05YWJiLWYyYjYjYjg5ZDY3MSIsImMiOiJh9)

- [r=eyJrJoiMzA0M2ViOWQtOTIwYy00ZjZjLWJjOTgtZDRkOGFmMTc0NGExIiwidCI6ImQ5NTk1MWE2LWWRmZDMtNGE3NC05YWJiLWYyYjYjYjg5ZDY3MSIsImMiOiJh9](https://app.powerbi.com/view?r=eyJrJoiMzA0M2ViOWQtOTIwYy00ZjZjLWJjOTgtZDRkOGFmMTc0NGExIiwidCI6ImQ5NTk1MWE2LWWRmZDMtNGE3NC05YWJiLWYyYjYjYjg5ZDY3MSIsImMiOiJh9)

### Instructions for referencing:

Official Statistics of Finland (OSF): Ministry of Economic Affairs and Employment / Employment Service Statistics. ISSN 1797-3694 202Y:MM, Employment Bulletin, MONTH 202Y. Helsinki: Ministry of Economic Affairs and Employment (date of reference). Available at:  
<https://www.temtyollisyyskatsaus.fi>



## Contact information

### **Ministry of Economic Affairs and Employment**

Employment and Well-Functioning Markets Department

Kaisa-Mari Kuusela, +358 29 504 8294

Petri Syvänen, +358 29 504 8050

Hilkka Kattelus, +358 29 504 8047

E-mail: [firstname.lastname\(at\)gov.fi](mailto:firstname.lastname(at)gov.fi) /  
[temtyonvalitystilasto\(at\)gov.fi](mailto:temtyonvalitystilasto(at)gov.fi)

<https://www.temtyollisyyskatsaus.fi>

ISSN: 1797-3694 (online publication)

