



Employment Bulletin

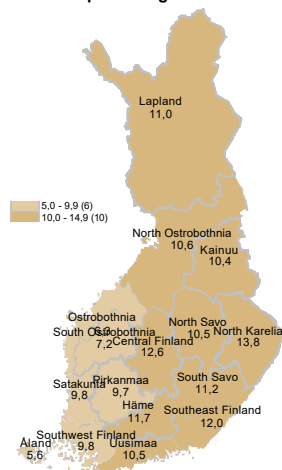
January 2022



Ministry of Economic Affairs
and Employment of Finland

In January, 273,700 unemployed jobseekers

Unemployed jobseekers' percentage of the workforce by ELY centre



At the end of January, a total of 273,700 unemployed jobseekers were registered at the Employment and Economic Development Offices and municipalities participating in the local government pilots on employment. This is 59,100 less than a year earlier, but 22,000 more than in January two years ago. The number of unemployed jobseekers was down by 1,600 from the previous month. Unemployed jobseekers accounted for 10.4% of the labour force, which is 2.3 percentage points less than the year before. The figures are from the Employment Service Statistics of the Ministry of Economic Affairs and Employment.

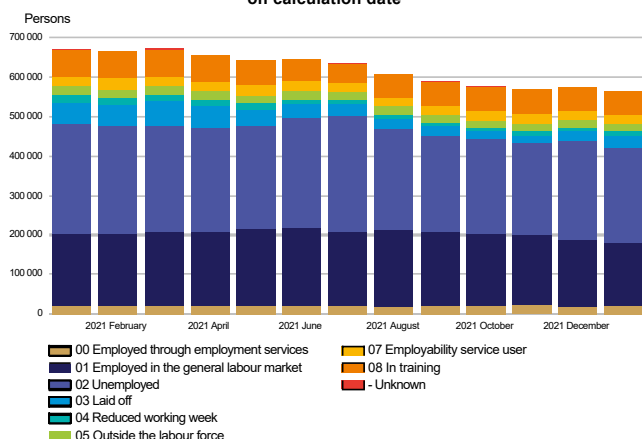
Trends:

- Total number of all jobseekers decreased by 103,800
- The number of unemployed jobseekers decreased by 59,100 from the previous year
- The number of people fully laid off decreased by 28,600
- Services included in the activation rate had 3,300 less people than a year ago
- 41,500 more new job vacancies compared to the previous year



All jobseekers

**Jobseekers by group
on calculation date**



The total number of jobseekers decreased

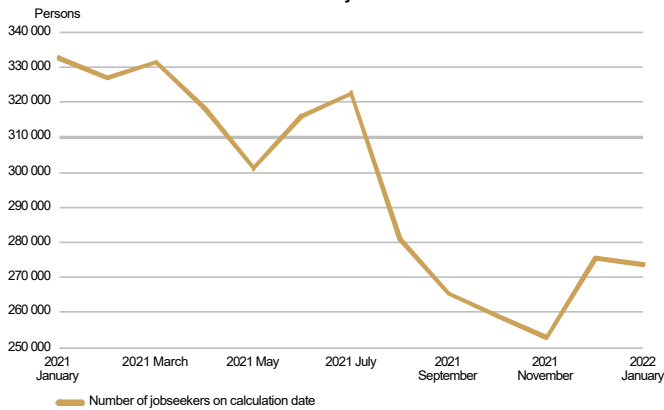
At the end of January, the number of jobseekers registered at the Employment and Economic Development Offices and municipalities participating in the local government pilots on employment totalled 563,700, down 103,800 on the previous year. Of the jobseekers, 287,400 were men and 276,300 were women. Compared to the situation a year ago, the number of men decreased by 56,800 and the number of women by 47,000. Of the jobseekers, 239,200 were customers of municipalities participating in the local government pilots on employment.

Of the jobseekers, 178,900 were employed, 157,900 of them were on the open labour market and 21,000 were employed through the services organised by the employment and economic development administration and local government pilots on employment. The number of jobseekers outside the labour force was 102,300, of whom 24,600 were in services promoting employment and 59,000 in training. Of the jobseekers, 273,700 were unemployed jobseekers, which is 59,100 less than the year before. In January, 29,100 of unemployed jobseekers were fully laid off, which is 3,800 more than in December. The number of people fully laid off decreased by 28,600 from January a year earlier. Furthermore, jobseekers on a reduced working week numbered 8,800, representing a decrease of 8,600 from the year before.



Unemployed jobseekers

UNEMPLOYED JOBSEEKERS
monthly

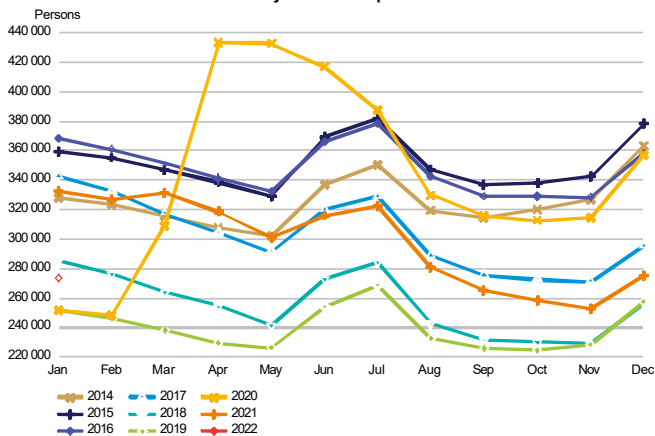


Decrease in unemployed jobseekers in January

At the end of January, the number of unemployed jobseekers registered at the Employment and Economic Development Offices and municipalities participating in the local government pilots on employment totalled 273,700, down 59,100 on the previous year. Compared with December, the number of unemployed jobseekers decreased by 1,600. Of the unemployed jobseekers, 144,600 were customers of municipalities participating in the local government pilots on employment. The number of new job searches among unemployed jobseekers totalled 17,600 in January, up 100 from January a year ago. In January, the number of starting periods of unemployment totalled 48,300, representing a decrease of 6,000 on the year before. The number of starting periods of unemployment increased by 800 from December. The number of starting periods of unemployment is always greater than the number of job searches because new unemployment periods are also registered from the existing groups of jobseekers.

The number of foreign citizens among unemployed jobseekers totalled 30,900, down 4,600 from January a year ago. Of these foreign unemployed jobseekers, EU/EEA citizens accounted for 9,800 at the end of January, down 2,100 from the year before.

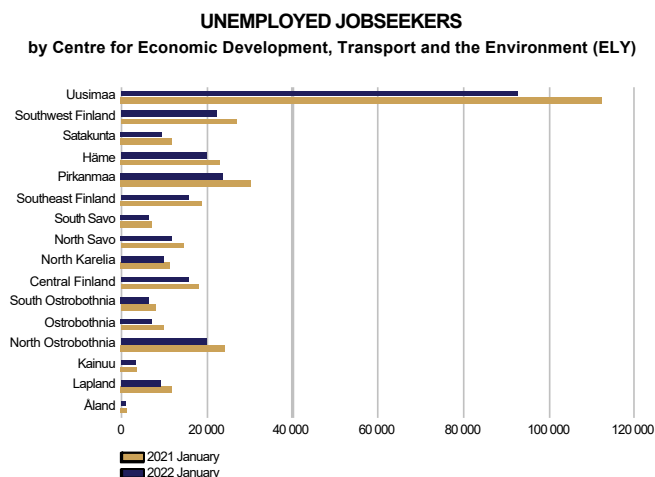
UNEMPLOYED JOBSEEKERS
month by month comparison



In January, 29,100 of unemployed jobseekers were fully laid off, which is 3,800 more than in December. The number of people fully laid off decreased by 28,600 from January a year earlier. In January, the number of job searches among the fully laid off people totalled 5,200, representing an increase of 200 on the year before. The number of starting periods of full lay-offs was 14,500, down 2,000 from January a year ago. The number of starting periods of full lay-offs increased by 3,000 from December. The number of people fully laid off decreased in all occupational groups; the most in the groups of craft and related trades workers (-6,100), 'unknown' (-5,200), service and sales workers (-5,000), plant and machine operators, and assemblers (-2,900) and technicians and associate professionals (-2,900).



Unemployed jobseekers by region



Unemployment decreased in the areas of all ELY Centres

Compared to the same period in the previous year, the number of unemployed jobseekers decreased in the areas of all Centres for Economic Development, Transport and the Environment (ELY Centres) in January; the most in Ostrobothnia (-28%), Lapland (-24%), South Ostrobothnia (-22%), Pirkanmaa (-21%) and Satakunta (-19%). The number of unemployed jobseekers decreased the least in South Savo (-12%), Kainuu (-13%), Central Finland (-13%), Häme (-13%) and North Karelia (-14%). The number of unemployed jobseekers fell the most in Åland, by 40%. Compared to December, the number of unemployed jobseekers decreased in twelve areas of ELY Centres; the most in Ostrobothnia (-4%), South Ostrobothnia (-4%), Kainuu (-4%), Lapland (-3%) and North Ostrobothnia (-3%). The number of unemployed jobseekers increased the most in South Savo (2%) and Uusimaa (1%). In Åland, the number of unemployed jobseekers rose 6% from December.

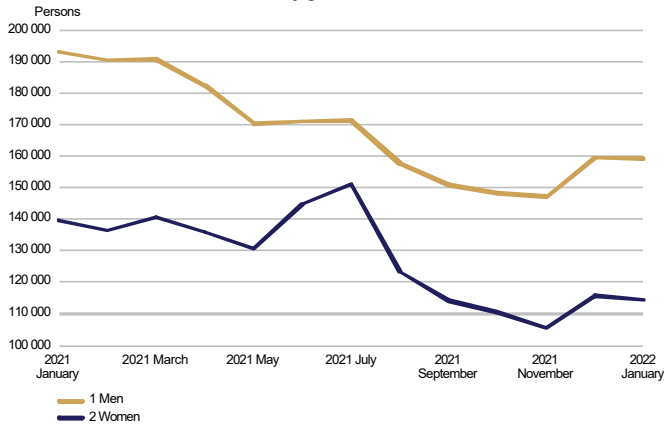
Unemployed jobseekers and jobs vacant in Employment and Economic Development Office by ELY centre

ELY centre	Unemployed jobseekers		Change		Of the Unemployed jobseekers' fully laid off		Jobs vacant		Change			
	Jan 2022	Dec 2021	Jan 2022	Jan 2021	Jan 2022	Jan 2021	Jan 2022	Dec 2021	Jan 2022	Jan 2021		
Uusimaa	92 539	91 867	112 287	-19 748	-18	9 957	10,5	33 145	22 468	20 910	12 235	59
Southwest Finland	22 345	22 424	26 704	-4 359	-16	2 710	9,8	10 766	7 395	6 151	4 615	75
Satakunta	9 514	9 561	11 768	-2 254	-19	985	9,8	4 733	2 375	3 162	1 571	50
Häme	19 965	20 105	22 997	-3 032	-13	1 984	11,7	7 889	5 894	4 799	3 090	64
Pirkanmaa	23 892	23 869	30 326	-6 434	-21	2 580	9,7	14 072	9 335	10 176	3 896	38
Southeast Finland	15 423	15 663	18 584	-3 161	-17	1 759	12,0	5 580	2 784	4 331	1 249	29
South Savo	6 355	6 213	7 203	-848	-12	701	11,2	3 736	2 367	2 528	1 208	48
North Savo	11 814	11 880	14 319	-2 505	-17	1 257	10,5	5 005	3 619	3 238	1 767	55
North Karelia	9 874	9 954	11 452	-1 578	-14	791	13,8	2 295	1 903	1 341	954	71
Central Finland	15 687	16 033	18 048	-2 361	-13	1 386	12,6	4 579	3 268	4 030	549	14
South Ostrobothnia	6 192	6 453	7 970	-1 778	-22	847	7,2	6 163	4 657	4 129	2 034	49
Ostrobothnia	7 079	7 380	9 765	-2 686	-28	754	6,3	7 191	4 610	5 489	1 702	31
North Ostrobothnia	19 792	20 331	24 228	-4 436	-18	1 931	10,6	10 641	6 927	6 111	4 530	74
Kainuu	3 215	3 335	3 675	-460	-13	345	10,4	1 354	1 083	1 193	161	13
Lapland	8 923	9 235	11 686	-2 763	-24	887	11,0	5 318	3 534	3 305	2 013	61
Åland	849	801	1 413	-564	-40	159	5,6	611	332	308	303	98
Abroad	266	238	407	-141	-35	103	.	3 250	2 221	3 993	-743	-19
WHOLE COUNTRY	273 726	275 344	332 834	-59 108	-18	29 136	10,4	126 328	84 772	85 194	41 134	48



Unemployed jobseekers by gender and age-group

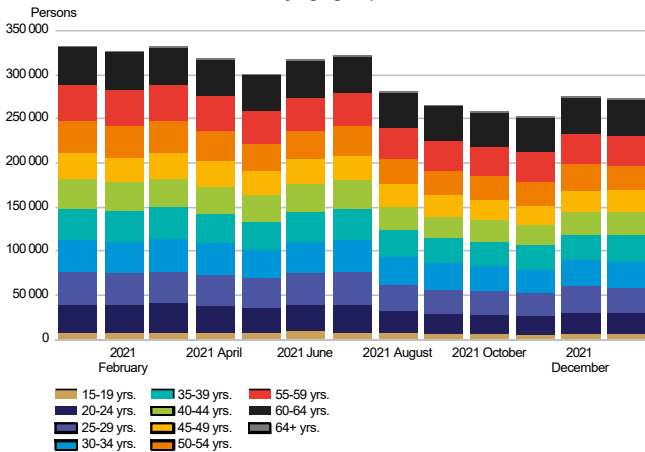
**UNEMPLOYED JOBSEEKERS
by gender**



Unemployment decreased by an equal percentage among men and women

Of the unemployed jobseekers, 159,200 (58%) were men and 114,500 (42%) were women, indicating a decrease of 400 for men and 1,200 for women from the figures for December. Compared with January a year ago, unemployment decreased by 33,900 (-18%) among men and by 25,200 (-18%) among women.

**UNEMPLOYED JOBSEEKERS
by age group**



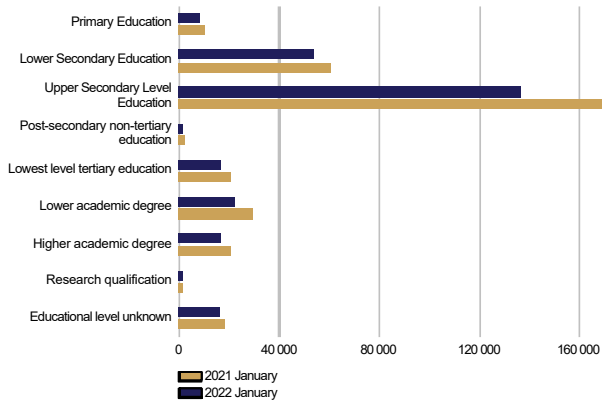
Unemployment decreased in all age groups under the age of 65

At the end of January, unemployed jobseekers under 25 years of age numbered 30,000, representing a decrease of 10,300 from January a year ago. Youth unemployment decreased from December by 1,200. For those under 20, the number of unemployed was 5,400. Among those over 50, the number of unemployed was 105,100, representing a decrease of 15,800 on the year before. Among those over 55, the number of unemployed was 77,200, representing a decrease of 7,700 on the year before. Unemployment decreased the most among those under 30 (-23%) and those between 50 and 54 (-22%). Unemployment rose from the previous year only among those over 64 years of age (6%). Compared with December, unemployment increased only among those between 25 and 34 and those over 59 years of age (1%).



Unemployed jobseekers by levels of education and occupational group

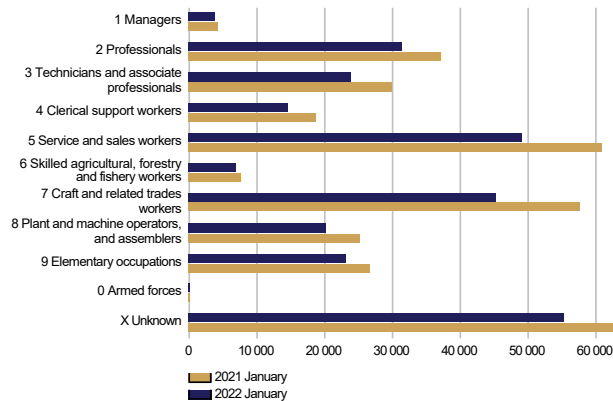
**UNEMPLOYED JOBSEEKERS
by level of education**



Unemployment decreased at all levels of education

Examined by level of education, unemployment decreased from January last year at all levels of education; the decrease was greatest among those with lower-degree level tertiary education (-24%), lowest level of tertiary education (-20%), lower level basic qualifications (-19%), upper secondary education (-19%), and higher-degree level tertiary education (-19%). Unemployment decreased the least among those with doctorate or equivalent level tertiary education (-10%) and level of education "unknown" (-10%).

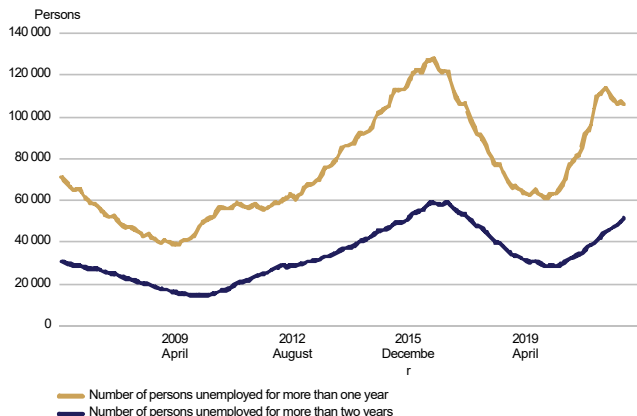
**UNEMPLOYED JOBSEEKERS
by occupational group**



Unemployment decreased in all occupational groups

Examined by occupation, unemployment decreased in all groups from January last year; the most in the groups of craft and related trades workers (-12,300), service and sales workers (-11,500), 'unknown' (-8,700), technicians and associate professionals (-6,200) and professionals (-6,000). Unemployment decreased the least in the occupational level of armed forces (-30), managers (-600) and skilled agricultural, forestry and fishery workers (-800).

**LONG-TERM UNEMPLOYED
at the end of the month**

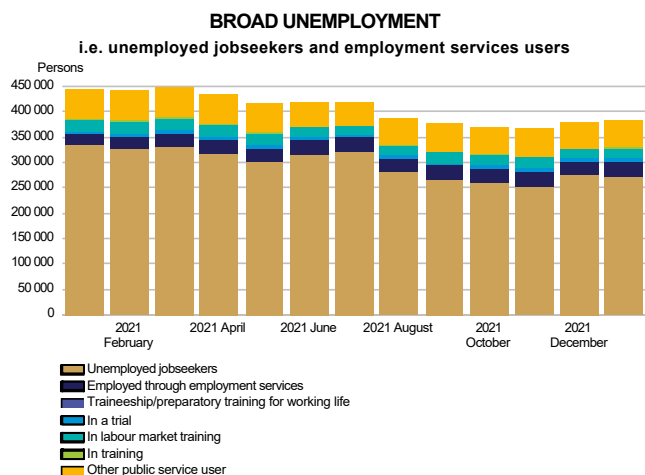


Increase in long-term unemployment

At the end of January, the number of long-term unemployed who had been unemployed without interruption for more than a year amounted to 106,000, up 12,500 on the previous year. Of the long-term unemployed, 63,500 were men and 42,400 were women. The number of men increased by 7,400 (13%) from the previous year and the number of women by 5,100 (14%). The number of long-term unemployed who had been unemployed without interruption for more than two years numbered 51,600, which is 13,900 more than a year ago.



Services

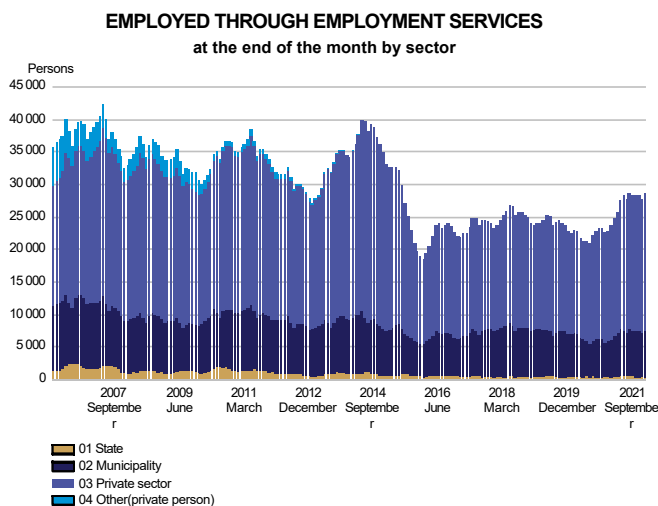


Decrease in the number of persons covered by services

At the end of January, the number of persons covered by services included in the activation rate amounted to 108,900, down 3,300 on the previous year. Compared with December, the number of persons covered by such services increased by 4,700. Of those covered by services, 59,600 were customers of municipalities participating in the local government pilots on employment. The activation rate at the end of January was 28.5%, which is 3.3 percentage points higher than a year earlier. In all, 4.0% of the labour force were covered by these services.

Of those covered by services, the number of men was 51,700, down 1,600 on the previous year. The number of women covered by these services was 57,200, down 1,700 on the previous year.

Broad unemployment, or the total number of unemployed jobseekers and those covered by services, was 382,600 at the end of January. This is 62,400 less than a year earlier. The decrease in broad unemployment was mainly due to a decrease in the number of unemployed.



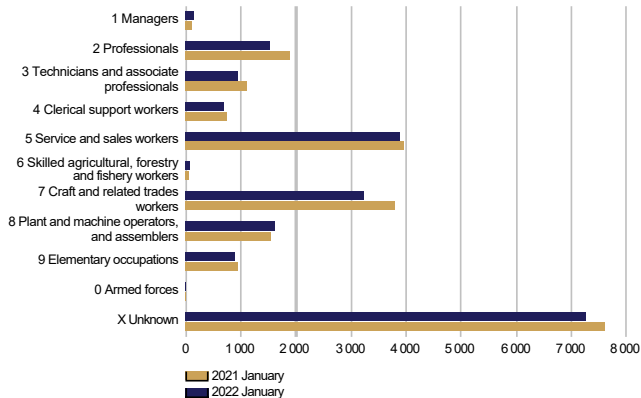
The number of placements increased in all sectors

At the end of January, the number of persons claiming pay subsidies, employed by the State or receiving start-up grants totalled 28,500, which is 5,800 more than the year before. Of those in placements, 1% were in central government jobs, 25% in local government jobs and 74% in the private sector. Since January last year, the number of placements has increased by 29% in local government jobs, by 25% in the private sector and by 8% in central government jobs. Of those in placements, 52% were men. Placements for men increased by 3,300, and those for women by 2,500 from the previous year.



Labour market training, training and self-motivated studies

PERSONS IN LABOUR MARKET TRAINING
in target profession at the end of the month

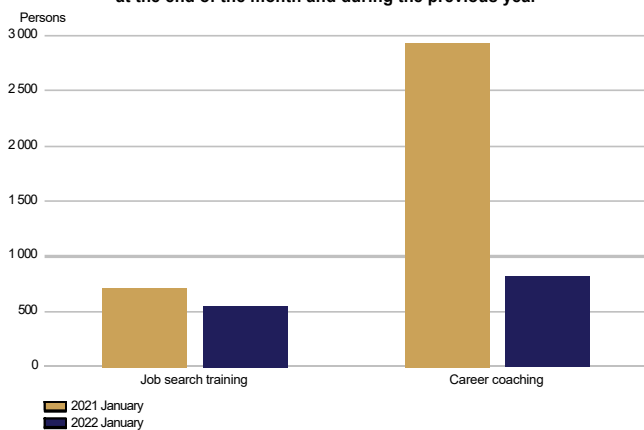


Number of persons in labour market training decreased

At the end of January, labour market training was attended by 20,200 students, down 1,500 on the previous year. Of the students, 9,700 were men and 10,500 were women. The number of men decreased by 500, and the number of women by 1,000 from January last year. During January, 5,100 new students began labour market training, representing a decrease of 200 on the year before.

Based on target occupation, the largest subgroup within the category of 'unknown' were people in integration training (6,600), which is 400 less than the year before.

IN TRAINING
at the end of the month and during the previous year



The number of persons in training decreased

At the end of January, 1,400 persons were in training, which is 2,300 less than the year before. Of those in training, 700 were men and 700 women. Career coaching was provided to 800 participants, which is 2,100 less than a year earlier. The number of participants in job search training decreased by 200 from the year before.

IN SELF-MOTIVATED STUDIES
in person's profession at the end of the month



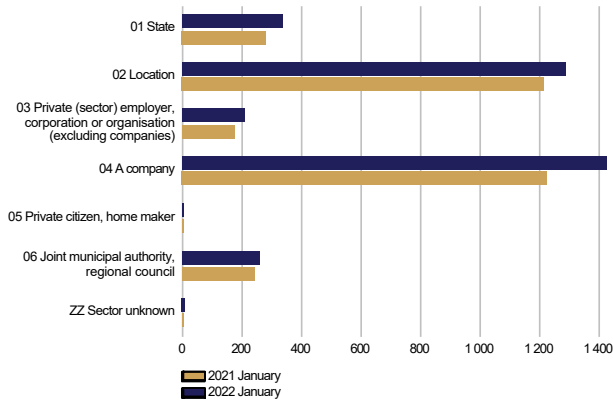
The number of people in self-motivated study decreased from the previous year

Self-motivated studies supported by unemployment benefits were attended by a total of 30,700 people, representing a decrease of 3,700 on the year before. The number of men receiving unemployment benefits for studies was 11,900, down 2,000 on the previous year. Among women, the number was 18,800, representing a decrease of 1,700 on the year before. Occupation was undetermined in case of 9,000 persons in the group of 'unknown', down 1,100 on the previous year.



Job alternation, rehabilitative work and trials

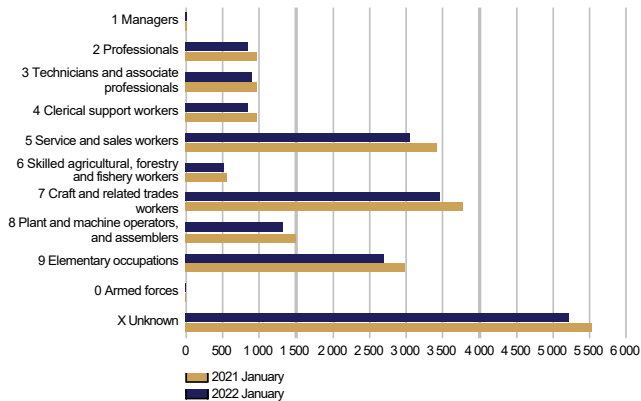
AS A JOB ALTERNATION SUBSTITUTE
at the end of the month and during the previous year by sector



The number of job alternation substitutes increased

A total of 3,500 persons were job alternation substitutes at the end of January, which is 400 more than a year earlier. Of the substitutes, 1,200 were men and 2,300 were women. The number of both men and women increased by 200 from the previous year.

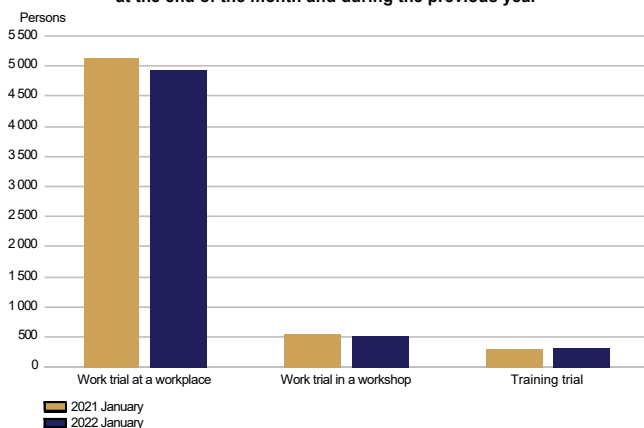
REHABILITATIVE WORK ACTIVITIES
at the end of the month and during the previous year



Fewer participants in rehabilitative work activities than in the previous year

A total of 18,800 persons participated in rehabilitative work activities at the end of January, which is 1,800 less than a year earlier. Of the participants 10,600 were men and 8,300 were women. The number of men decreased by 1,100 and the number of women by 700 from the previous year.

IN TRIALS
at the end of the month and during the previous year



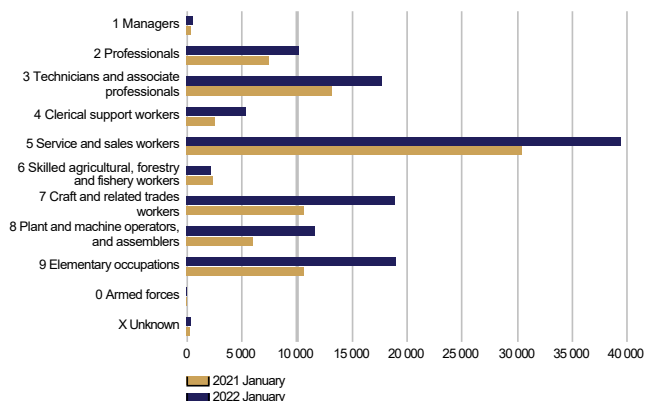
Participation in work and training trials decreased

Work and training trials had a total of 5,800 participants at the end of January, which is 200 less than the year before. Of the participants, 2,900 were men and 2,900 were women. Compared with the previous year, the number of both men and women decreased by 100.



Jobs vacant

NEW JOB VACANCIES
during the month and during the previous year



Increase in the number of new vacancies from the year before

The number of new vacancies reported to Employment and Economic Development Offices and municipalities participating in the local government pilots on employment during January totalled 125,100, which is 41,500 more than in January last year. In all, the number of unfilled vacancies in January amounted to 208,100, which is 78,200 more than a year ago. A total of 12,200 of these vacancies were filled during January, 2,300 of them through Employment and Economic Development Offices. A total of 68,000 vacancies were closed for applications because the application period had ended or because there was a sufficient number of applicants. In addition, a total of 6,600 vacancies were cancelled and 1,900 vacancies could not be filled. The number of vacancies remaining unfilled at Employment and Economic Development Offices and in local government pilots at the end of January was 126,300, up 41,100 on the previous year.

The number of new vacancies increased in all occupational groups, with the exception of skilled agricultural, forestry and fishery workers, and armed forces. The greatest increases were in the groups of service and sales workers (9,000), elementary occupations (8,400), craft and related trades workers (8,300), plant and machine operators, and assemblers (5,700) and associated professionals and technicians (4,500).



Summary table

EMPLOYMENT SITUATION AT THE END OF 2022 JANUARY (I) AND
ACTIVITIES OF EMPLOYMENT AND ECONOMIC DEVELOPMENT OFFICES DURING JANUARY (II)
WHOLE COUNTRY

I EMPLOYMENT SITUATION AT THE END OF MONTH	Jan-22	Jan-21	CHANGE NUMBER	CHANGE %
A. JOBSEEKERS				
1. Unemployed jobseekers	273 726	332 834	-59 108	-17,8
of whom fully laid off	29 136	57 786	-28 650	-49,6
2. On reduced working week	8 761	17 340	-8 579	-49,5
3. Those who have work	178 913	203 651	-24 738	-12,1
of whom in the general labour market	157 892	184 964	-27 072	-14,6
of whom employed through employment services	21 021	18 687	2 334	12,5
4. Persons outside the labour force	102 337	113 692	-11 355	-10,0
of whom in services promoting employment	24 576	26 691	-2 115	-7,9
of whom in training	59 029	65 334	-6 305	-9,7
1-4 Total of jobseekers	563 737	667 517	-103 780	-15,5
B. LABOUR DEMAND				
1. Jobs vacant	126 328	85 194	41 134	48,3
of those notified for over a month	39 013	21 550	17 463	81,0
of those notified for over 2 months	18 370	11 626	6 744	58,0
C. PARTICIPATING IN SERVICES				
1. Employed by the State	358	331	27	8,2
2. Employed by municipalities	7 215	5 596	1 619	28,9
3. Employed by the private sector	20 914	16 789	4 125	24,6
1-3 Total number of employed people	28 487	22 716	5 771	25,4
4. Labour market training	20 221	21 727	-1 506	-6,9
5. Training	1 364	3 640	-2 276	-62,5
6. Engaged in work/training trials	5 790	5 957	-167	-2,8
7. As a job alternation substitute	3 517	3 135	382	12,2
8. Rehabilitative work	18 846	20 682	-1 836	-8,9
9. Self-motivated studies supported by unemployment benefit	30 689	34 395	-3 706	-10,8
1-9 Total number of people participating in services	108 914	112 252	-3 338	-3,0
D. STRUCTURE OF UNEMPLOYMENT				
1. Unemployed women	114 496	139 741	-25 245	-18,1
2. Unemployed men	159 230	193 093	-33 863	-17,5
3. Under 25 years old	29 978	40 240	-10 262	-25,5
4. Over 50 years old	105 129	120 887	-15 758	-13,0
5. Unemployed over a year	105 959	93 435	12 524	13,4
6. Foreign unemployed	30 872	35 517	-4 645	-13,1
E. UNEMPLOYMENT SECURITY				
1. Unemployed members of employees' unemployment funds	108 080	149 737	-41 657	-27,8
II EMPLOYMENT SITUATION DURING THE MONTH				
1. Unemployed jobseekers	314 956	387 087	-72 131	-18,6
2. Other jobseekers	284 297	320 040	-35 743	-11,2
1-2 Total number of jobseekers	599 253	707 127	-107 874	-15,3
3. Vacancies during a month	208 132	129 945	78 187	60,2
New vacancies during a month	125 099	83 646	41 453	49,6
Vacancies filled during a month	12 210	7 380	4 830	65,4
of those filled with job-seekers at the Employment Service	2 291	2 281	10	0,4
Vacancies application period ended or sufficient number of applicants	67 977	37 157	30 820	82,9
Vacancies cancelled or could not be filled	8 525	3 870	4 655	120,3
4. Started spell of unemployment	48 267	54 227	-5 960	-11,0
5. Completed spell of unemployment	49 834	67 696	-17 862	-26,4
6. New jobs found through employment services	7 103	5 898	1 205	20,4
7. New entrants to labour market training	5 056	5 268	-212	-4,0



Foreigners' summary table

FOREIGNERS' EMPLOYMENT SITUATION AT THE END OF 2022 JANUARY (I) AND
ACTIVITIES OF EMPLOYMENT AND ECONOMIC DEVELOPMENT OFFICES DURING JANUARY (II)
WHOLE COUNTRY

I EMPLOYMENT SITUATION AT THE END OF MONTH	Jan-22	Jan-21	CHANGE NUMBER	CHANGE %
A. JOBSEEKERS				
1. Unemployed jobseekers	30 872	35 517	-4 645	-13,1
of whom fully laid off	3 516	6 207	-2 691	-43,4
2. On reduced working week	582	1 069	-487	-45,6
3. Those who have work	19 166	19 372	-206	-1,1
of whom in the general labour market	17 341	17 765	-424	-2,4
of whom employed through employment services	1 825	1 607	218	13,6
4. Persons outside the labour force	28 980	30 449	-1 469	-4,8
of whom in services promoting employment	2 513	2 584	-71	-2,7
of whom in training	24 176	25 413	-1 237	-4,9
1-4 Total of jobseekers	79 600	86 407	-6 807	-7,9
C. PARTICIPATING IN SERVICES				
1. Employed by the State	5	5	0	0,0
2. Employed by municipalities	505	396	109	27,5
3. Employed by the private sector	1 685	1 319	366	27,7
1-3 Total number of employed people	2 195	1 720	475	27,6
4. Labour market training	9 177	9 342	-165	-1,8
5. Training	114	200	-86	-43,0
6. Engaged in work/training trials	1 207	1 094	113	10,3
7. As a job alternation substitute	67	46	21	45,7
8. Rehabilitative work	1 149	1 386	-237	-17,1
9. Self-motivated studies supported by unemployment benefit	13 332	15 117	-1 785	-11,8
1-9 Total number of people participating in services	27 241	28 905	-1 664	-5,8
D. STRUCTURE OF UNEMPLOYMENT				
1. Unemployed women	14 833	16 409	-1 576	-9,6
2. Unemployed men	16 039	19 108	-3 069	-16,1
3. Under 25 years old	1 944	2 330	-386	-16,6
4. Over 50 years old	8 390	9 122	-732	-8,0
5. Unemployed over a year	10 342	7 797	2 545	32,6
E. UNEMPLOYMENT SECURITY				
1. Unemployed members of employees' unemployment funds	6 870	9 005	-2 135	-23,7
II EMPLOYMENT SITUATION DURING THE MONTH				
1. Unemployed jobseekers	37 026	42 354	-5 328	-12,6
2. Other jobseekers	45 808	46 242	-434	-0,9
1-2 Total number of jobseekers	82 834	88 596	-5 762	-6,5
4. Started spell of unemployment	5 310	5 631	-321	-5,7
5. Completed spell of unemployment	6 836	7 759	-923	-11,9
6. New jobs found through employment services	543	399	144	36,1
7. New entrants to labour market training	2 471	2 238	233	10,4



Regional table

UNEMPLOYED JOBSEEKERS AND JOBS VACANT BY ELY CENTRE AT THE END OF 2022 JANUARY
WHOLE COUNTRY

ELY centre	Workforce	Unemployed jobseekers							Unemployed over a year	Disabled and chron. ill	Jobs vacant
		% of workforce	Total	Men	Women	Under 20 years old	Under 25 years old	Over 50 years old			
Uusimaa	880 161	10,5	92 539	51 174	41 365	1 346	8 477	33 102	41 943	7 997	33 145
Southwest Finland	228 633	9,8	22 345	12 801	9 544	450	2 527	8 171	7 877	2 628	10 766
Satakunta	96 959	9,8	9 514	5 664	3 850	249	1 113	4 124	3 154	1 262	4 733
Häme	170 771	11,7	19 965	11 626	8 339	369	2 071	8 669	9 041	3 252	7 889
Pirkanmaa	247 562	9,7	23 892	13 648	10 244	443	2 766	8 396	7 822	2 617	14 072
Southeast Finland	128 857	12,0	15 423	9 136	6 287	326	1 666	6 772	4 606	1 800	5 580
South Savo	56 747	11,2	6 355	3 960	2 395	170	756	2 869	1 902	1 142	3 736
North Savo	112 391	10,5	11 814	7 331	4 483	212	1 423	4 898	4 744	1 772	5 005
North Karelia	71 372	13,8	9 874	6 081	3 793	200	1 087	4 358	3 741	1 337	2 295
Central Finland	124 466	12,6	15 687	9 316	6 371	399	2 194	5 845	6 087	1 622	4 579
South Ostrobothnia	86 161	7,2	6 192	3 866	2 326	159	898	2 481	1 427	1 071	6 163
Ostrobothnia	112 960	6,3	7 079	4 272	2 807	173	819	2 755	2 195	1 037	7 191
North Ostrobothnia	187 001	10,6	19 792	11 936	7 856	572	2 805	6 757	7 349	2 354	10 641
Kainuu	30 941	10,4	3 215	2 094	1 121	86	351	1 594	747	547	1 354
Lapland	80 787	11,0	8 923	5 674	3 249	176	921	3 960	2 979	1 137	5 318
Åland	15 115	5,6	849	473	376	19	94	293	241	...	611
Abroad	0	0,0	266	177	89	0	8	85	102	...	3 250
Total	2 630 884	10,4	273 726	159 230	114 496	5 350	29 978	105 129	105 959	31 610	126 328



Information about the website

On this website you will find the latest statistics from the Ministry of Economic Affairs and Employment's monthly Employment Bulletin. You can access a .pdf version of the current and previous months' Employment Bulletin by following the link on the right. The Employment Bulletin is based on the data from the MEAE's Employment Service Statistics. The Ministry of Economic Affairs and Employment compiles statistics on the clients of the Employment and economic development offices (TE offices), including registered job-seekers, labour market policy services, and job vacancies reported to TE offices by employers. The data is collected from the customer service registry (URA) used by the TE offices. This means that the data used by MEAE Employment Service Statistics is completely registry-based. The statistical data covers all persons, services, and open vacancies in the aforementioned groups, as separately defined in the registry by the classifications and variables for the statistical period in question.

Owing to seasonal variations, the Employment Bulletin always includes a comparison with the corresponding month in the previous year. The descriptors used in the Bulletin are also available in a table format. The Employment Bulletins are published at the end of the subsequent calendar month. The official date of publication is announced in advance.

The following symbols have been used:

. Category not applicable

... Data subject to secrecy

Links:

- **Employment Service Statistics online:**
<https://www.tem.fi/en/employment-bulletin-and-employment-service-statistics>
- **Employment Service Statistics, Description and Quality Description**
<https://www.tem.fi/en/release-dates-of-statistics-and-description-and-quality-description>
- **You can access key information from MEAE's Employment Service Statistics by visiting the Statistics Finland's StatFin database:**
https://pxnet2.stat.fi/PXWeb/pxweb/en/StatFin/StatFin__tym__tyonv/
- **The Employment Service Statistics data is also available from the MEAE Publications page (only available in Finnish).**
<https://www.tem.fi/tyopoliittinen-aikakauskirja>
- **Joint monthly report from MEAE and Statistics Finland**
https://tilastokeskus.fi/til/tyti/tie_en.html
- **Comparison between the statistics of Statistics Finland and the Ministry of Economic Affairs and Employment**
https://www.stat.fi/til/tyti/tyti_2019-09-13_men_001_en.html
- **Comparison between the Job Vacancy Survey of Statistics Finland and Employment Service Statistics of the Ministry of Economic Affairs and Employment**
https://tilastokeskus.fi/til/atp/atp_2017-01-02_men_001.html
- **Local government pilots on employment (In Finnish):**
<https://app.powerbi.com/view?r=eyJrJoiMzA0M2ViOWQtOTIwYy00ZjZjLWJjOTgtZDRkOGFmMTc0NGExIiwidCI6ImQ5NTk1MWE2LWWRmZDMtNGE3NC05YWJiLWYyYjYjYjg5ZDY3MSIsImMiOiJh9>

Instructions for referencing:

Official Statistics of Finland (OSF): Ministry of Economic Affairs and Employment / Employment Service Statistics. ISSN 1797-3694 202Y:MM, Employment Bulletin, MONTH 202Y. Helsinki: Ministry of Economic Affairs and Employment (date of reference). Available at:
<https://www.temtyollisyyskatsaus.fi>



Contact information

Ministry of Economic Affairs and Employment

Employment and Well-Functioning Markets Department

Kaisa-Mari Kuusela, +358 29 504 8294

Petri Syvänen, +358 29 504 8050

Hilkka Kattelus, +358 29 504 8047

E-mail: [firstname.lastname\(at\)gov.fi](mailto:firstname.lastname(at)gov.fi) /
[temtyonvalitystilasto\(at\)gov.fi](mailto:temtyonvalitystilasto(at)gov.fi)

<https://www.temtyollisyyskatsaus.fi>

ISSN: 1797-3694 (online publication)

