



# Employment Bulletin

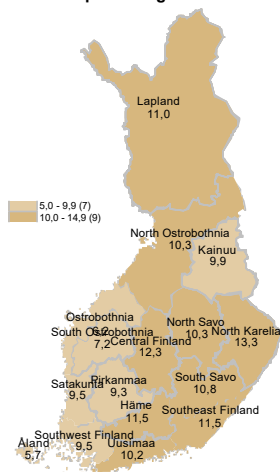
February 2022



Ministry of Economic Affairs  
and Employment of Finland

## In February, 265,600 unemployed jobseekers

Unemployed jobseekers' percentage of the workforce by ELY centre



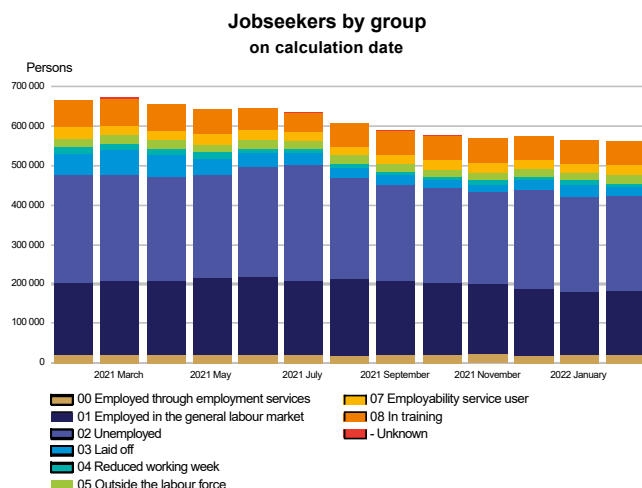
At the end of February, a total of 265,600 unemployed jobseekers were registered at the Employment and Economic Development Offices and municipalities participating in the local government pilots on employment. This is 61,500 less than a year earlier, but 17,400 more than in February two years ago. The number of unemployed jobseekers was down by 8,100 from the previous month. Unemployed jobseekers accounted for 10.1% of the labour force, which is 2.3 percentage points less than the year before. The figures are from the Employment Service Statistics of the Ministry of Economic Affairs and Employment.

### Trends:

- Total number of all jobseekers decreased by 103,300
- The number of unemployed jobseekers decreased by 61,500 from the previous year
- The number of people fully laid off decreased by 28,800
- Services included in the activation rate had 3,800 less people than a year ago
- 43,800 more new job vacancies compared to the previous year



## All jobseekers



### The total number of jobseekers decreased

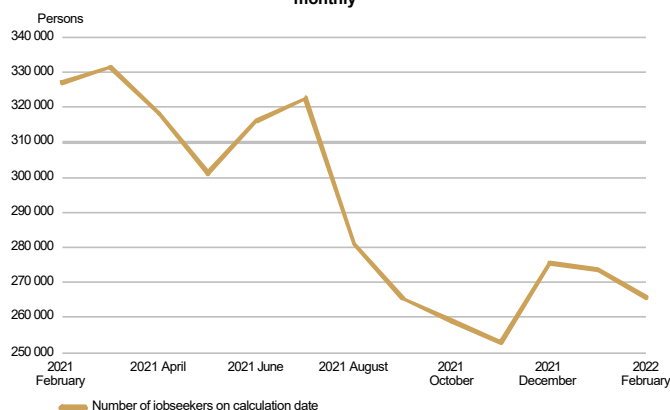
At the end of February, the number of jobseekers registered at the Employment and Economic Development Offices and municipalities participating in the local government pilots on employment totalled 560,000, down 103,300 on the previous year. Of the jobseekers, 285,400 were men and 274,600 were women. Compared to the situation a year ago, the number of men decreased by 56,700 and the number of women by 46,500. Of the jobseekers, 238,000 were customers of municipalities participating in the local government pilots on employment.

Of the jobseekers, 182,900 were employed, 161,800 of them were on the open labour market and 21,100 were employed through the services organised by the employment and economic development administration and local government pilots on employment. The number of jobseekers outside the labour force was 103,000, of whom 25,400 were in services promoting employment and 59,300 in training. Of the jobseekers, 265,600 were unemployed jobseekers, which is 61,500 less than the year before. In February, 26,800 of unemployed jobseekers were fully laid off, which is 2,300 less than in January. The number of people fully laid off decreased by 28,800 from February a year earlier. Furthermore, jobseekers on a reduced working week numbered 8,500, representing a decrease of 8,500 from the year before.



## Unemployed jobseekers

**UNEMPLOYED JOBSEEKERS**  
monthly

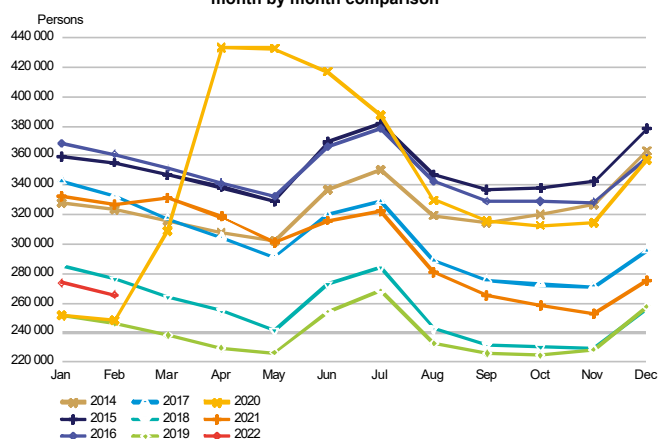


### Decrease in unemployed jobseekers in February

At the end of February, the number of unemployed jobseekers registered at the Employment and Economic Development Offices and municipalities participating in the local government pilots on employment totalled 265,600, down 61,500 on the previous year. Compared with January, the number of unemployed jobseekers decreased by 8,100. Of the unemployed jobseekers, 140,800 were customers of municipalities participating in the local government pilots on employment. The number of new job searches among unemployed jobseekers totalled 10,700 in February, down 1,500 from February a year ago. In February, the number of starting periods of unemployment totalled 30,600, representing a decrease of 8,100 on the year before. The number of starting periods of unemployment decreased by 17,700 from January. The number of starting periods is always greater than the number of job searches because new unemployment periods are also registered from the existing groups of jobseekers.

The number of foreign citizens among unemployed jobseekers totalled 29,900, down 4,800 from February a year ago. Of these foreign unemployed jobseekers, EU/EEA citizens accounted for 9,400 at the end of February, down 2,400 from the year before.

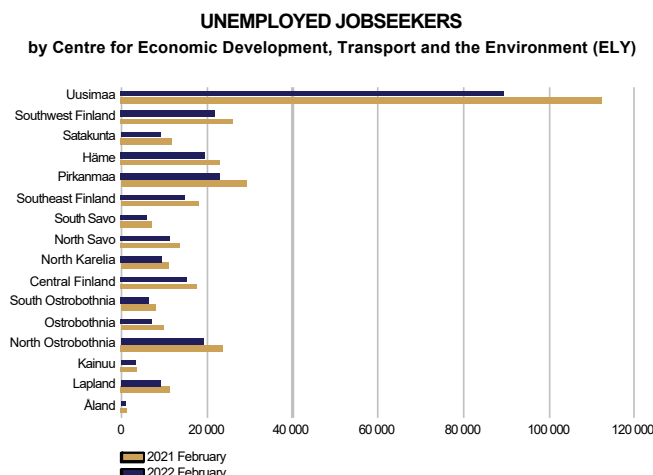
**UNEMPLOYED JOBSEEKERS**  
month by month comparison



In February, 26,800 of unemployed jobseekers were fully laid off, which is 2,300 less than in January. The number of people fully laid off decreased by 28,800 from February a year earlier. In February, the number of job searches among those fully laid off totalled 2,600, representing a decrease of 1,300 on the year before. The number of starting periods of full lay-offs was 7,800, down 4,700 from February a year ago. The number of starting periods of full lay-offs decreased by 6,700 from January. The number of people fully laid off decreased in all occupational groups, with the exception of armed forces. The greatest decreases were in the groups of service and sales workers (-6,200), craft and related trades workers (-5,900), 'unknown' (-4,700), technicians and associate professionals (-2,800), and plant and machine operators, and assemblers (-2,600).



## Unemployed jobseekers by region



### Unemployment decreased in the areas of all ELY Centres

Compared to the same period in the previous year, the number of unemployed jobseekers decreased in February in the areas of all Centres for Economic Development, Transport and the Environment (ELY Centres); the most in Ostrobothnia (-27%), Pirkanmaa (-22%), Lapland (-22%) and Satakunta (-21%). The number of unemployed jobseekers decreased the least in South Savo (-12%), Central Finland (-13%), North Karelia (-15%), Häme (-15%) and Kainuu (-15%). The number of unemployed jobseekers fell the most in Åland, by 37%. Compared with January, the number of unemployed jobseekers decreased in the areas of all ELY Centres; the most in Kainuu (-5%), Pirkanmaa (-4%), North Karelia (-4%), Southeast Finland (-4%) and South Savo (-4%). The number of unemployed jobseekers grew only in Åland (1%) from the previous month.

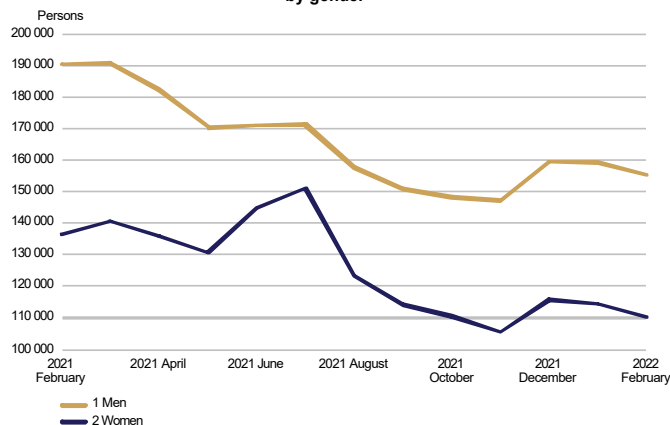
### Unemployed jobseekers and jobs vacant in Employment and Economic Development Office by ELY centre

ELY centre				Change	Of the Unemployed						Change	
	Feb	Jan	Feb	Feb 2022	unemployed	jobseekers'	Feb	Jan	Feb	Feb 2022		
	2022	2022	2021	Feb 2021	jobseekers	percentage	2022	2022	2021	Feb 2021		
					fully	of the						
					laid off	workforce						
ELY centre	Unemployed jobseekers						%	Jobs vacant			%	
Uusimaa	89 388	92 539	112 218	-22 830	-20	8 573	10,2	37 181	33 145	23 303	13 878	60
Southwest Finland	21 631	22 345	25 864	-4 233	-16	2 377	9,5	12 515	10 766	6 898	5 617	81
Satakunta	9 205	9 514	11 605	-2 400	-21	905	9,5	4 644	4 733	3 059	1 585	52
Häme	19 627	19 965	22 989	-3 362	-15	1 898	11,5	8 687	7 889	5 115	3 572	70
Pirkanmaa	22 952	23 892	29 278	-6 326	-22	2 339	9,3	14 437	14 072	8 966	5 471	61
Southeast Finland	14 851	15 423	17 922	-3 071	-17	1 634	11,5	4 940	5 580	3 550	1 390	39
South Savo	6 124	6 355	6 986	-862	-12	636	10,8	4 420	3 736	2 666	1 754	66
North Savo	11 541	11 814	13 786	-2 245	-16	1 207	10,3	6 414	5 005	4 112	2 302	56
North Karelia	9 494	9 874	11 117	-1 623	-15	763	13,3	2 624	2 295	1 693	931	55
Central Finland	15 320	15 687	17 590	-2 270	-13	1 391	12,3	4 746	4 579	3 511	1 235	35
South Ostrobothnia	6 171	6 192	7 726	-1 555	-20	951	7,2	5 688	6 163	4 530	1 158	26
Ostrobothnia	6 983	7 079	9 629	-2 646	-27	783	6,2	11 145	7 191	6 514	4 631	71
North Ostrobothnia	19 260	19 792	23 775	-4 515	-19	1 874	10,3	10 722	10 641	6 066	4 656	77
Kainuu	3 059	3 215	3 599	-540	-15	303	9,9	1 654	1 354	1 368	286	21
Lapland	8 882	8 923	11 322	-2 440	-22	954	11,0	5 975	5 318	3 225	2 750	85
Åland	857	849	1 361	-504	-37	155	5,7	719	611	323	396	123
Abroad	244	266	361	-117	-32	98	.	3 558	3 250	4 837	-1 279	-26
WHOLE COUNTRY	265 591	273 726	327 130	-61 539	-19	26 841	10,1	140 069	126 328	89 736	50 333	56



## Unemployed jobseekers by gender and age-group

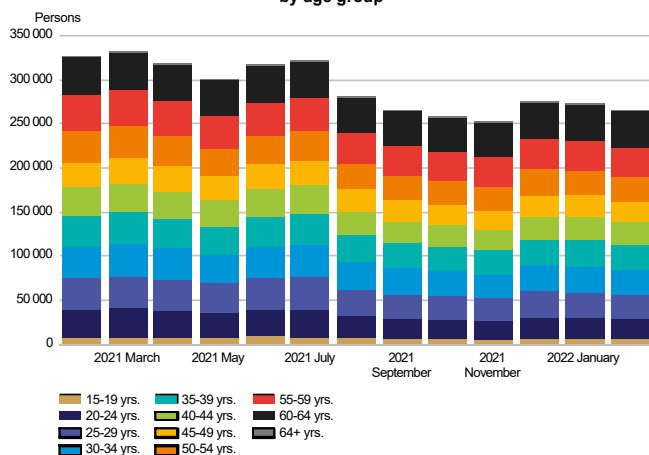
UNEMPLOYED JOBSEEKERS  
by gender



### Unemployment decreased more among women than men

Of the unemployed jobseekers, 155,300 (58%) were men and 110,300 (42%) were women, indicating a decrease of 3,900 for men and 4,200 for women from the figures for January. Compared with February a year ago, unemployment decreased by 35,200 (-18%) among men and by 26,300 (-19%) among women.

UNEMPLOYED JOBSEEKERS  
by age group



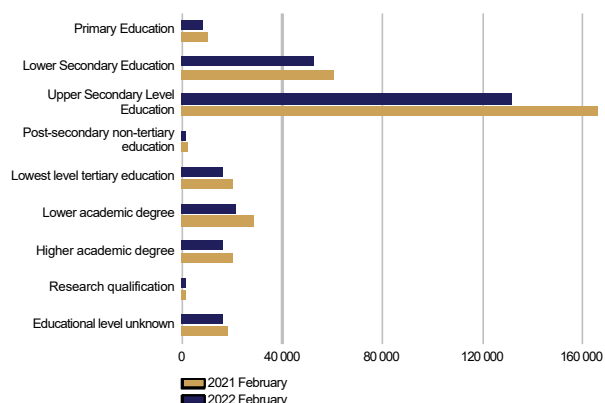
### Unemployment decreased in all age groups

At the end of February, unemployed jobseekers under 25 years of age numbered 28,200, representing a decrease of 10,700 from February a year ago. Youth unemployment fell by 1,800 from January. For those under 20, the number of unemployed was 5,000. Among those over 50, the number of unemployed was 103,300, representing a decrease of 16,700 on the year before. Among those over 55, the number of unemployed was 76,000, representing a decrease of 8,500 on the year before. Unemployment decreased the most among those under 30 (-25%) and those between 50 and 54 (-23%). Unemployment decreased the least among those over 59 (-3%). Compared with January, unemployment decreased in all age groups; the most among those under 25 (-6%).



## Unemployed jobseekers by levels of education and occupational group

UNEMPLOYED JOBSEEKERS  
by level of education

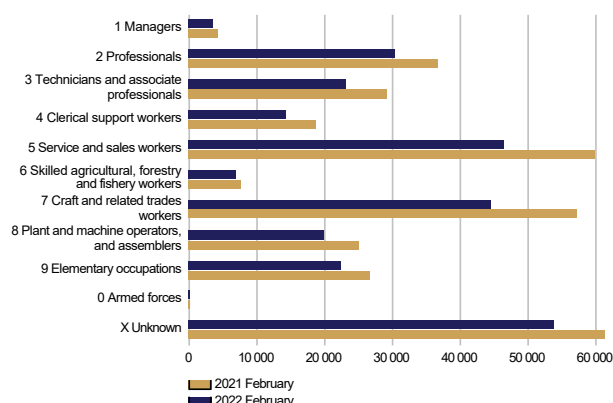


### Unemployment decreased at all levels of education

Examined by level of education, unemployment decreased from February last year at all levels of education; the decrease was greatest among those with lower-degree level tertiary education (-24%), post secondary non tertiary education (-22%) and lowest level of tertiary education (-21%).

Unemployment fell the least among those with level of education 'unknown' (-11%), doctorate or equivalent level tertiary education (-13%) and higher level basic qualifications (-13 %).

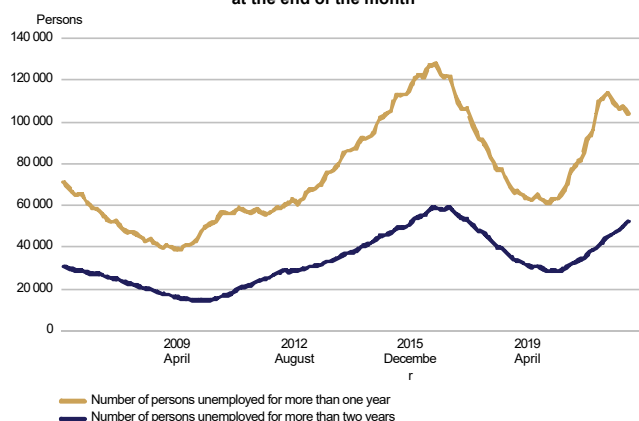
UNEMPLOYED JOBSEEKERS  
by occupational group



### Unemployment decreased in all occupational groups

Examined by occupation, unemployment decreased in all groups from February last year; the most in the groups of service and sales workers (-13,400), craft and related trades workers (-12,500), 'unknown' (-7,600), professionals (-6,400) and technicians and associate professionals (-6,400). Unemployment decreased the least in the occupational groups of armed forces (-40), managers (-700) and skilled agricultural, forestry and fishery workers (-900).

LONG-TERM UNEMPLOYED  
at the end of the month

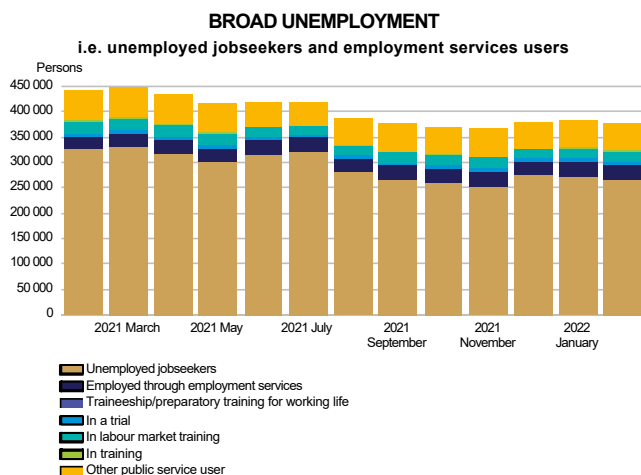


### Increase in long-term unemployment

At the end of February, the number of long-term unemployed who have been unemployed without interruption for more than a year amounted to 103,800, up 7,700 on the previous year. Of the long-term unemployed, 62,400 were men and 41,400 were women. The number of men increased by 4,600 (8%) from the previous year and the number of women by 3,200 (8%). The number of long-term unemployed who had been unemployed without interruption for more than two years numbered 52,200, which is 13,700 more than a year ago.



## Services

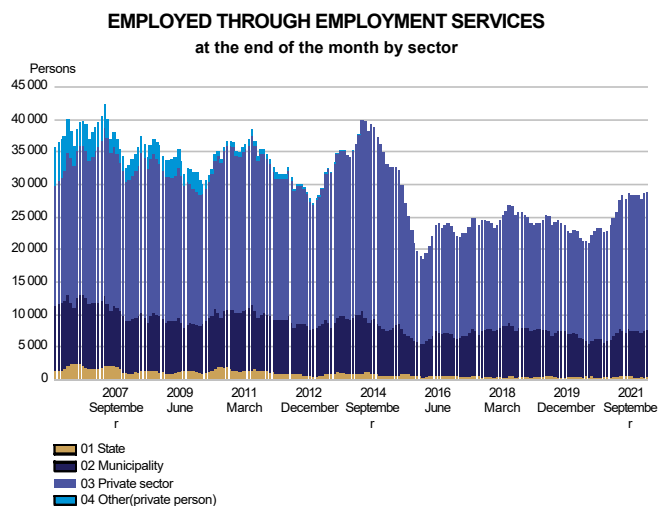


### Decrease in the number of persons covered by services

At the end of February, the number of persons covered by services included in the activation rate amounted to 111,400, down 3,800 on the previous year. Compared with January, the number of persons covered by such services increased by 2,500. Of those covered by services, 61,300 were customers of municipalities participating in the local government pilots on employment. The activation rate at the end of February was 29.6%, which is 3.6 percentage points higher than a year earlier. In all, 4.0% of the labour force were covered by these services.

Of those covered by services, the number of men was 52,900, down 1,900 on the previous year. The number of women covered by these services was 58,600, down 1,900 on the previous year.

Broad unemployment, or the total number of unemployed jobseekers and those covered by services, was 377,000 at the end of February. This is 65,300 less than a year earlier. The decrease in broad unemployment was mainly due to a decrease in the number of unemployed.



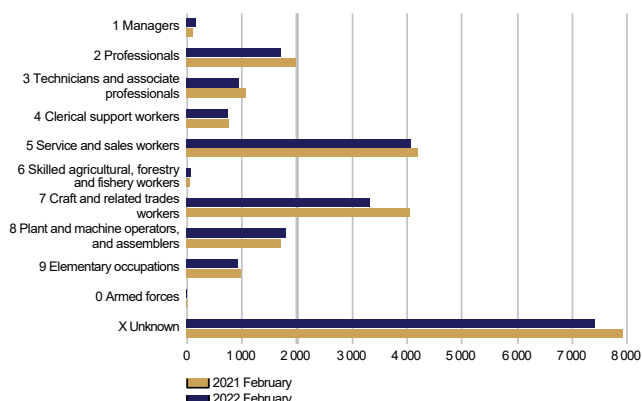
### The number of placements increased in all sectors

At the end of February, the number of persons claiming pay subsidies, employed by the State or receiving start-up grants totalled 29,000, which is 5,200 more than the year before. Of those in placements, 1% were in central government jobs, 26% in local government jobs and 73% in the private sector. Since February last year, the number of placements has increased by 25% in local government jobs, by 21% in the private sector and by 3% in central government jobs. Of those in placements, 52% were men. Placements for men increased by 2,900, and those for women by 2,300 from the previous year.



## Labour market training, training and self-motivated studies

**PERSONS IN LABOUR MARKET TRAINING**  
in target profession at the end of the month

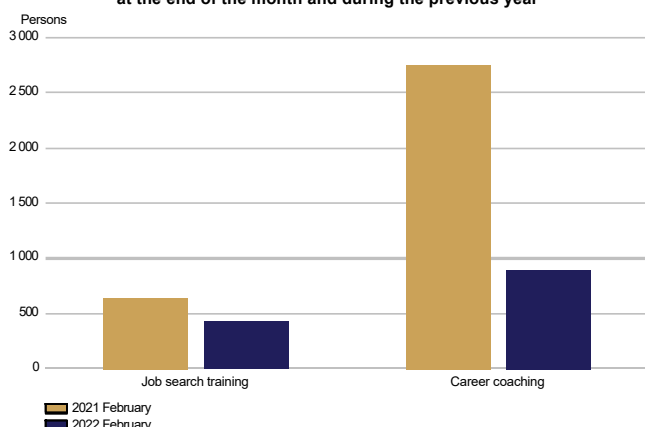


### Number of persons in labour market training decreased

At the end of February, labour market training was attended by 21,100 students, down 1,700 on the previous year. Of the students, 10,200 were men and 10,900 were women. The number of men decreased by 600, and the number of women by 1,100 from February last year. During February, 3,900 new students began labour market training, representing a decrease of 1,200 on the year before.

Based on target occupation, the largest subgroup within the category of 'unknown' were people in integration training (6,600), which is 600 less than the year before.

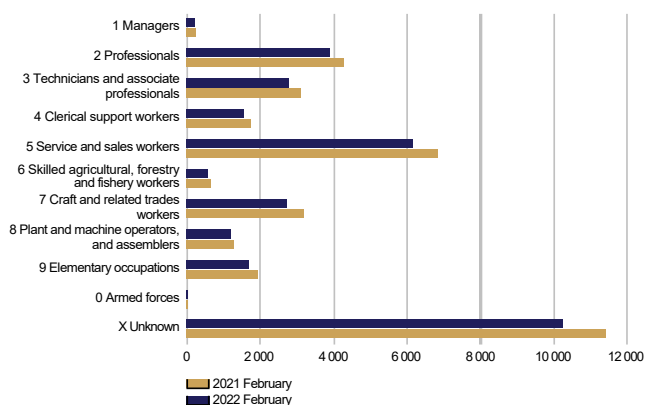
**IN TRAINING**  
at the end of the month and during the previous year



### The number of persons in training decreased

At the end of February, 1,300 persons were in training, which is 2,100 less than the year before. Of those in training, 600 were men and 700 were women. Career coaching was provided to 900 participants, which is 1,900 less than a year earlier. The number of participants in job search training decreased by 200 from the year before.

**IN SELF-MOTIVATED STUDIES**  
in person's profession at the end of the month



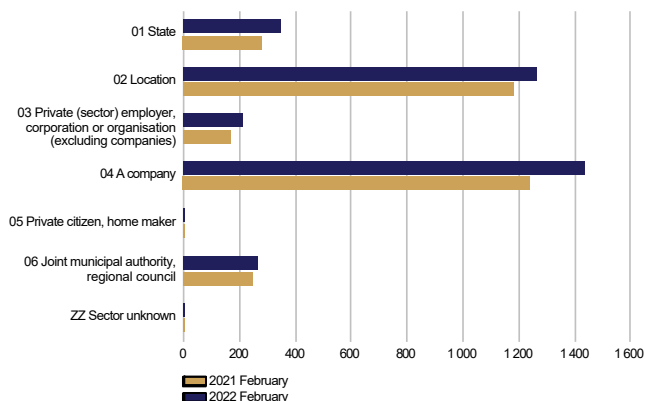
### The number of people in self-motivated study decreased from the previous year

Self-motivated studies supported by unemployment benefits were attended by a total of 31,000 people, representing a decrease of 3,600 on the year before. The number of men receiving unemployment benefits for studies was 11,900, down 2,100 on the previous year. Among women, the number was 19,100, representing a decrease of 1,600 on the year before. Occupation was undetermined in case of 9,200 persons in the group of 'unknown', down 900 on the previous year.



## Job alternation, rehabilitative work and trials

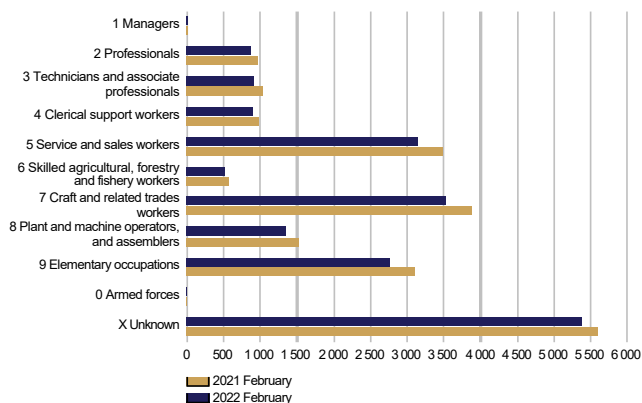
**AS A JOB ALTERNATION SUBSTITUTE**  
at the end of the month and during the previous year by sector



### The number of job alternation substitutes increased

A total of 3,500 persons were job alternation substitutes at the end of February, which is 400 more than a year earlier. Of the substitutes, 1,200 were men and 2,300 were women. The number of both men and women increased by 200 from the previous year.

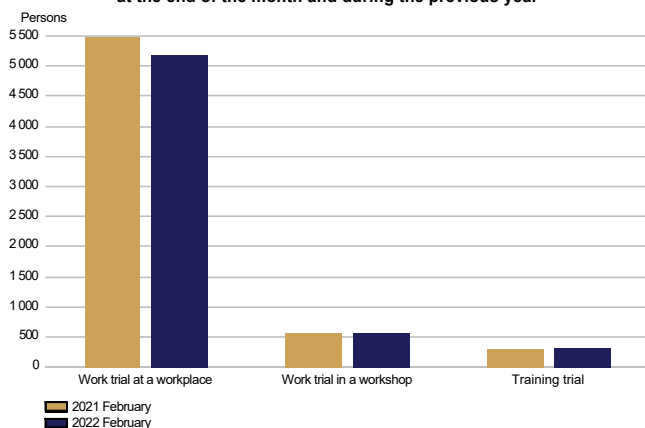
**REHABILITATIVE WORK ACTIVITIES**  
at the end of the month and during the previous year



### Fewer participants in rehabilitative work activities than in the previous year

A total of 19,400 persons participated in rehabilitative work activities at the end of February, which is 1,800 less than a year earlier. Of the participants 10,900 were men and 8,500 were women. The number of men decreased by 1,100 and the number of women by 700 from the previous year.

**IN TRIALS**  
at the end of the month and during the previous year



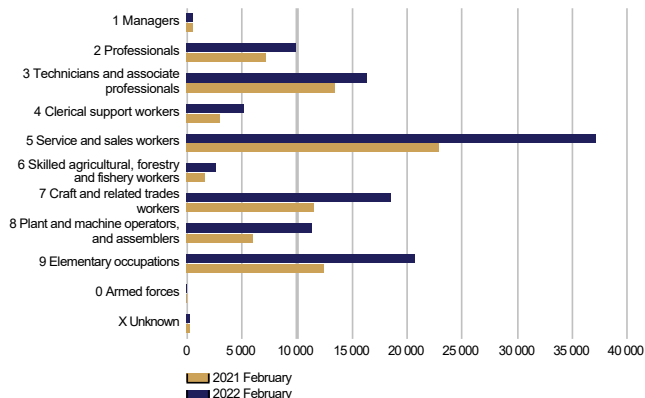
### Participation in work and training trials decreased

Work and training trials had a total of 6,100 participants at the end of February, which is 300 less than a year earlier. Of the participants, 3,000 were men and 3,100 were women. The number of men decreased by 100 and the number of women by 200 from the previous year.



## Jobs vacant

**NEW JOB VACANCIES**  
during the month and during the previous year



### Increase in the number of new vacancies from the year before

The number of new vacancies reported to Employment and Economic Development Offices and municipalities participating in the local government pilots on employment during February totalled 122,400, which is 43,800 more than in February last year. In all, the number of unfilled vacancies in February amounted to 242,400, which is 81,800 more than a year ago. A total of 13,400 of these vacancies were filled during February, 2,600 of them through Employment and Economic Development Offices. A total of 89,100 vacancies were closed for applications because the application period had ended or because there was a sufficient number of applicants. In addition, a total of 5,500 vacancies were cancelled and 2,100 vacancies could not be filled. The number of vacancies remaining unfilled at Employment and Economic Development Offices and in local government pilots at the end of February was 140,100, up 50,300 on the previous year.

The number of new vacancies had increased in all occupational groups, with the exception of armed forces. The greatest increases were in the groups of service and sales workers (14,400), elementary occupations (8,100), craft and related trades workers (7,000), plant and machine operators, and assemblers (5,400), technicians and associate professionals (2,700) and professionals (2,700).



### Summary table

EMPLOYMENT SITUATION AT THE END OF 2022 FEBRUARY (I) AND  
ACTIVITIES OF EMPLOYMENT AND ECONOMIC DEVELOPMENT OFFICES DURING FEBRUARY (II)  
WHOLE COUNTRY

I EMPLOYMENT SITUATION AT THE END OF MONTH	Feb-22	Feb-21	CHANGE NUMBER	CHANGE %
<b>A. JOBSEEKERS</b>				
1. Unemployed jobseekers	265 591	327 130	-61 539	-18,8
of whom fully laid off	26 841	55 658	-28 817	-51,8
2. On reduced working week	8 472	16 969	-8 497	-50,1
3. Those who have work	182 919	204 872	-21 953	-10,7
of whom in the general labour market	161 823	185 910	-24 087	-13,0
of whom employed through employment services	21 096	18 962	2 134	11,3
4. Persons outside the labour force	103 012	114 278	-11 266	-9,9
of whom in services promoting employment	25 354	27 345	-1 991	-7,3
of whom in training	59 285	65 762	-6 477	-9,8
<b>1-4 Total of jobseekers</b>	<b>559 994</b>	<b>663 249</b>	<b>-103 255</b>	<b>-15,6</b>
<b>B. LABOUR DEMAND</b>				
1. Jobs vacant	140 069	89 736	50 333	56,1
of those notified for over a month	54 366	36 389	17 977	49,4
of those notified for over 2 months	22 694	14 086	8 608	61,1
<b>C. PARTICIPATING IN SERVICES</b>				
1. Employed by the State	418	407	11	2,7
2. Employed by municipalities	7 387	5 910	1 477	25,0
3. Employed by the private sector	21 166	17 426	3 740	21,5
<b>1-3 Total number of employed people</b>	<b>28 971</b>	<b>23 743</b>	<b>5 228</b>	<b>22,0</b>
4. Labour market training	21 102	22 795	-1 693	-7,4
5. Training	1 328	3 395	-2 067	-60,9
6. Engaged in work/training trials	6 073	6 340	-267	-4,2
7. As a job alternation substitute	3 523	3 128	395	12,6
8. Rehabilitative work	19 395	21 172	-1 777	-8,4
9. Self-motivated studies supported by unemployment benefit	31 035	34 662	-3 627	-10,5
<b>1-9 Total number of people participating in services</b>	<b>111 427</b>	<b>115 235</b>	<b>-3 808</b>	<b>-3,3</b>
<b>D. STRUCTURE OF UNEMPLOYMENT</b>				
1. Unemployed women	110 259	136 570	-26 311	-19,3
2. Unemployed men	155 332	190 560	-35 228	-18,5
3. Under 25 years old	28 181	38 841	-10 660	-27,4
4. Over 50 years old	103 301	120 015	-16 714	-13,9
5. Unemployed over a year	103 806	96 093	7 713	8,0
6. Foreign unemployed	29 947	34 706	-4 759	-13,7
<b>E. UNEMPLOYMENT SECURITY</b>				
1. Unemployed members of employees' unemployment funds	103 958	145 756	-41 798	-28,7
<b>II EMPLOYMENT SITUATION DURING THE MONTH</b>				
1. Unemployed jobseekers	292 686	354 553	-61 867	-17,4
2. Other jobseekers	291 450	333 995	-42 545	-12,7
<b>1-2 Total number of jobseekers</b>	<b>584 136</b>	<b>688 548</b>	<b>-104 412</b>	<b>-15,2</b>
3. Vacancies during a month	242 388	160 577	81 811	50,9
New vacancies during a month	122 434	78 655	43 779	55,7
Vacancies filled during a month	13 410	12 368	1 042	8,4
of those filled with job-seekers at the Employment Service	2 589	2 319	270	11,6
Vacancies application period ended or sufficient number of applicants	89 127	57 672	31 455	54,5
Vacancies cancelled or could not be filled	7 601	6 269	1 332	21,2
4. Started spell of unemployment	30 572	38 682	-8 110	-21,0
5. Completed spell of unemployment	35 169	39 545	-4 376	-11,1
6. New jobs found through employment services	2 612	2 538	74	2,9
7. New entrants to labour market training	3 854	5 025	-1 171	-23,3



## Foreigners' summary table

FOREIGNERS' EMPLOYMENT SITUATION AT THE END OF 2022 FEBRUARY (I) AND  
ACTIVITIES OF EMPLOYMENT AND ECONOMIC DEVELOPMENT OFFICES DURING FEBRUARY (II)  
WHOLE COUNTRY

I EMPLOYMENT SITUATION AT THE END OF MONTH	Feb-22	Feb-21	CHANGE NUMBER	CHANGE %
<b>A. JOBSITEERS</b>				
1. Unemployed jobseekers	29 947	34 706	-4 759	-13,7
of whom fully laid off	3 177	5 928	-2 751	-46,4
2. On reduced working week	582	1 058	-476	-45,0
3. Those who have work	19 515	19 548	-33	-0,2
of whom in the general labour market	17 686	17 944	-258	-1,4
of whom employed through employment services	1 829	1 604	225	14,0
4. Persons outside the labour force	29 143	30 858	-1 715	-5,6
of whom in services promoting employment	2 602	2 655	-53	-2,0
of whom in training	24 287	25 733	-1 446	-5,6
<b>1-4 Total of jobseekers</b>	<b>79 187</b>	<b>86 170</b>	<b>-6 983</b>	<b>-8,1</b>
<b>C. PARTICIPATING IN SERVICES</b>				
1. Employed by the State	6	7	-1	-14,3
2. Employed by municipalities	499	422	77	18,2
3. Employed by the private sector	1 706	1 360	346	25,4
<b>1-3 Total number of employed people</b>	<b>2 211</b>	<b>1 789</b>	<b>422</b>	<b>23,6</b>
4. Labour market training	9 298	9 706	-408	-4,2
5. Training	82	174	-92	-52,9
6. Engaged in work/training trials	1 286	1 169	117	10,0
7. As a job alternation substitute	67	44	23	52,3
8. Rehabilitative work	1 171	1 437	-266	-18,5
9. Self-motivated studies supported by unemployment benefit	13 602	15 237	-1 635	-10,7
<b>1-9 Total number of people participating in services</b>	<b>27 717</b>	<b>29 556</b>	<b>-1 839</b>	<b>-6,2</b>
<b>D. STRUCTURE OF UNEMPLOYMENT</b>				
1. Unemployed women	14 378	15 952	-1 574	-9,9
2. Unemployed men	15 569	18 754	-3 185	-17,0
3. Under 25 years old	1 829	2 252	-423	-18,8
4. Over 50 years old	8 285	9 019	-734	-8,1
5. Unemployed over a year	10 179	8 089	2 090	25,8
<b>E. UNEMPLOYMENT SECURITY</b>				
1. Unemployed members of employees' unemployment funds	6 570	8 819	-2 249	-25,5
<b>II EMPLOYMENT SITUATION DURING THE MONTH</b>				
1. Unemployed jobseekers	33 451	38 388	-4 937	-12,9
2. Other jobseekers	48 155	49 894	-1 739	-3,5
<b>1-2 Total number of jobseekers</b>	<b>81 606</b>	<b>88 282</b>	<b>-6 676</b>	<b>-7,6</b>
4. Started spell of unemployment	3 629	4 331	-702	-16,2
5. Completed spell of unemployment	4 128	4 676	-548	-11,7
6. New jobs found through employment services	195	191	4	2,1
7. New entrants to labour market training	1 442	2 105	-663	-31,5



## Regional table

UNEMPLOYED JOBSEEKERS AND JOBS VACANT BY ELY CENTRE AT THE END OF 2022 FEBRUARY  
WHOLE COUNTRY

ELY centre	Workforce		Unemployed jobseekers						Disabled		Jobs vacant
		% of workforce	Total	Men	Women	Under 20 years old	Under 25 years old	Over 50 years old	Unemployed over a year	and chron. ill	
Uusimaa	880 161	10,2	89 388	49 603	39 785	1 257	7 924	32 498	41 116	7 908	37 181
Southwest Finland	228 633	9,5	21 631	12 487	9 144	431	2 368	7 996	7 798	2 571	12 515
Satakunta	96 959	9,5	9 205	5 543	3 662	230	1 059	4 037	3 073	1 254	4 644
Häme	170 771	11,5	19 627	11 493	8 134	377	1 985	8 584	8 896	3 228	8 687
Pirkanmaa	247 562	9,3	22 952	13 100	9 852	398	2 503	8 205	7 600	2 557	14 437
Southeast Finland	128 857	11,5	14 851	8 823	6 028	306	1 539	6 648	4 450	1 786	4 940
South Savo	56 747	10,8	6 124	3 838	2 286	155	702	2 805	1 875	1 124	4 420
North Savo	112 391	10,3	11 541	7 237	4 304	218	1 383	4 854	4 718	1 744	6 414
North Karelia	71 372	13,3	9 494	5 925	3 569	189	1 046	4 261	3 661	1 299	2 624
Central Finland	124 466	12,3	15 320	9 150	6 170	361	2 027	5 768	5 999	1 581	4 746
South Ostrobothnia	86 161	7,2	6 171	3 796	2 375	140	845	2 488	1 395	1 061	5 688
Ostrobothnia	112 960	6,2	6 983	4 218	2 765	155	766	2 750	2 163	1 023	11 145
North Ostrobothnia	187 001	10,3	19 260	11 690	7 570	565	2 701	6 531	7 137	2 310	10 722
Kainuu	30 941	9,9	3 059	2 022	1 037	70	309	1 551	750	536	1 654
Lapland	80 787	11,0	8 882	5 769	3 113	172	918	3 950	2 847	1 139	5 975
Åland	15 115	5,7	857	466	391	16	96	298	234	...	719
Abroad	0	0,0	244	171	73	0	8	77	92	...	3 558
Total	2 630 884	10,1	265 591	155 332	110 259	5 041	28 181	103 301	103 806	31 157	140 069



## Information about the website

On this website you will find the latest statistics from the Ministry of Economic Affairs and Employment's monthly Employment Bulletin. You can access a .pdf version of the current and previous months' Employment Bulletin by following the link on the right. The Employment Bulletin is based on the data from the MEAE's Employment Service Statistics. The Ministry of Economic Affairs and Employment compiles statistics on the clients of the Employment and economic development offices (TE offices), including registered job-seekers, labour market policy services, and job vacancies reported to TE offices by employers. The data is collected from the customer service registry (URA) used by the TE offices. This means that the data used by MEAE Employment Service Statistics is completely registry-based. The statistical data covers all persons, services, and open vacancies in the aforementioned groups, as separately defined in the registry by the classifications and variables for the statistical period in question.

Owing to seasonal variations, the Employment Bulletin always includes a comparison with the corresponding month in the previous year. The descriptors used in the Bulletin are also available in a table format. The Employment Bulletins are published at the end of the subsequent calendar month. The official date of publication is announced in advance.

The following symbols have been used:

. Category not applicable

... Data subject to secrecy

### Links:

- **Employment Service Statistics online:**  
<https://www.tem.fi/en/employment-bulletin-and-employment-service-statistics>
- **Employment Service Statistics, Description and Quality Description**  
<https://www.tem.fi/en/release-dates-of-statistics-and-description-and-quality-description>
- **You can access key information from MEAE's Employment Service Statistics by visiting the Statistics Finland's StatFin database:**  
[https://pxnet2.stat.fi/PXWeb/pxweb/en/StatFin/StatFin\\_\\_tym\\_\\_tyonv/](https://pxnet2.stat.fi/PXWeb/pxweb/en/StatFin/StatFin__tym__tyonv/)
- **The Employment Service Statistics data is also available from the MEAE Publications page (only available in Finnish).**  
<https://www.tem.fi/tyopoliittinen-aikakauskirja>
- **Joint monthly report from MEAE and Statistics Finland**  
[https://tilastokeskus.fi/til/tyti/tie\\_en.html](https://tilastokeskus.fi/til/tyti/tie_en.html)
- **Comparison between the statistics of Statistics Finland and the Ministry of Economic Affairs and Employment**  
[https://www.stat.fi/til/tyti/tyti\\_2019-09-13\\_men\\_001\\_en.html](https://www.stat.fi/til/tyti/tyti_2019-09-13_men_001_en.html)
- **Comparison between the Job Vacancy Survey of Statistics Finland and Employment Service Statistics of the Ministry of Economic Affairs and Employment**  
[https://tilastokeskus.fi/til/atp/atp\\_2017-01-02\\_men\\_001.html](https://tilastokeskus.fi/til/atp/atp_2017-01-02_men_001.html)
- **Local government pilots on employment (In Finnish):**  
<https://app.powerbi.com/view?r=eyJrJoiMzA0M2ViOWQtOTIwYy00ZjZjLWJjOTgtZDRkOGFmMTc0NGExIiwidCI6ImQ5NTk1MWE2LWRmZDMtNGE3NC05YWJlLWYyYjYjYjg5ZDY3MSIsImMiOiJh9>

### Instructions for referencing:

Official Statistics of Finland (OSF): Ministry of Economic Affairs and Employment / Employment Service Statistics. ISSN 1797-3694 202Y:MM, Employment Bulletin, MONTH 202Y. Helsinki: Ministry of Economic Affairs and Employment (date of reference). Available at:  
<https://www.temtyollisyyskatsaus.fi>



## Contact information

### **Ministry of Economic Affairs and Employment**

Employment and Well-Functioning Markets Department

Kaisa-Mari Kuusela, +358 29 504 8294

Petri Syvänen, +358 29 504 8050

Hilkka Kattelus, +358 29 504 8047

E-mail: [firstname.lastname\(at\)gov.fi](mailto:firstname.lastname(at)gov.fi) /  
[temtyonvalitystilasto\(at\)gov.fi](mailto:temtyonvalitystilasto(at)gov.fi)

<https://www.temtyollisyyskatsaus.fi>

ISSN: 1797-3694 (online publication)

