



Employment Bulletin

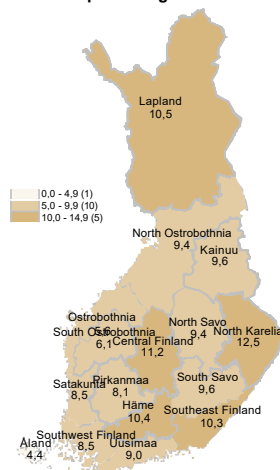
April 2022



Ministry of Economic Affairs
and Employment of Finland

In April, 238,800 unemployed jobseekers

Unemployed jobseekers' percentage of the workforce by ELY centre



At the end of April, a total of 238,800 unemployed jobseekers were registered at the Employment and Economic Development Offices and municipalities participating in the local government pilots on employment. This is 79,600 fewer than a year earlier, and 11,900 fewer than the previous month. Unemployed jobseekers accounted for 9.1% of the labour force, which is 3.0 percentage points less than the year before. The figures are from the Employment Service Statistics of the Ministry of Economic Affairs and Employment.

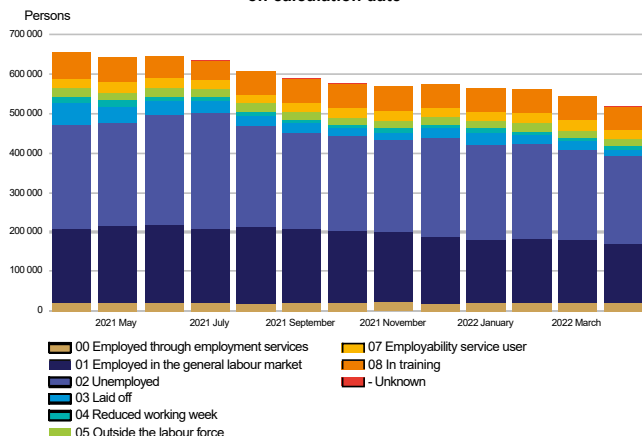
Trends:

- Total number of all jobseekers decreased by 139,600
- The number of unemployed jobseekers decreased by 79,600 from the previous year
- The number of people fully laid off decreased by 37,200
- Services included in the activation rate had 1,500 less people than a year ago
- 35,100 more new job vacancies compared to the previous year



All jobseekers

Jobseekers by group
on calculation date



The total number of jobseekers decreased

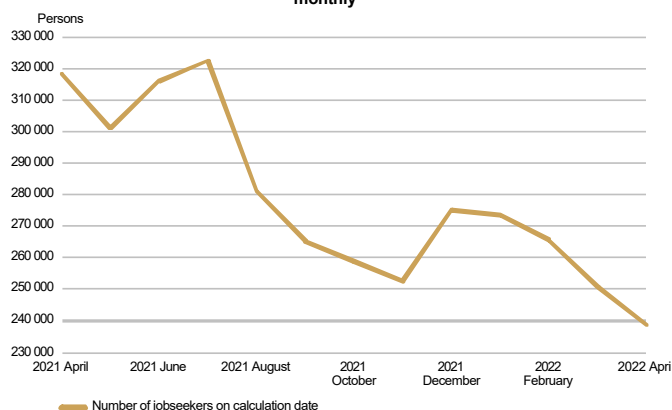
At the end of April, the number of jobseekers registered at the Employment and Economic Development Offices and municipalities participating in the local government pilots on employment totalled 517,700, down 139,600 on the previous year. Of the jobseekers, 263,600 were men and 254,100 were women. Compared to the situation a year ago, the number of men decreased by 71,800 and the number of women by 67,800. Of the jobseekers, 230,900, or the same number as a year earlier, were customers of municipalities participating in the local government pilots on employment.

Of the jobseekers, 169,800 were employed, 148,200 of them were on the open labour market and 21,600 were employed through the services organised by the employment and economic development administration and local government pilots on employment. The number of jobseekers outside the labour force was 102,300, of whom 26,400 were in services promoting employment and 57,900 in training. Of the jobseekers, 238,800 were unemployed jobseekers, which is 79,600 less than the year before. In April, 16,600 of unemployed jobseekers were fully laid off, which is 4,300 less than in March. The number of people fully laid off decreased by 37,200 from April a year earlier. Furthermore, jobseekers on a reduced working week numbered 6,800, representing a decrease of 9,400 from the year before.



Unemployed jobseekers

UNEMPLOYED JOBSEEKERS
monthly

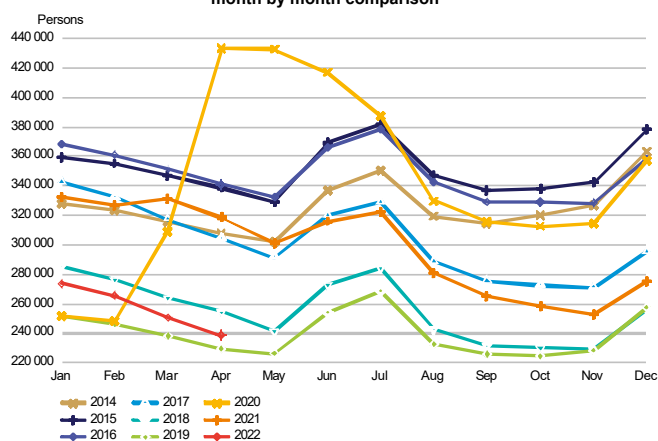


Decrease in unemployed jobseekers in April

At the end of April, the number of unemployed jobseekers registered at the Employment and Economic Development Offices and municipalities participating in the local government pilots on employment totalled 238,800, down 79,600 on the previous year. Compared with March, the number of unemployed jobseekers decreased by 11,900. Of the unemployed jobseekers, 129,900, or 28,800 fewer than in April a year ago, were customers of municipalities participating in the local government pilots on employment. The number of new job searches among unemployed jobseekers totalled 9,900, down 1,100 from April a year ago. In April, the number of starting periods of unemployment totalled 30,200, representing a decrease of 8,100 on the year before. The number of starting periods of unemployment increased by 200 from March. The number of starting periods is always greater than the number of job searches because new unemployment periods are also registered from the existing groups of jobseekers.

The number of foreign citizens among unemployed jobseekers totalled 27,600, down 7,200 from April a year ago. Of these foreign unemployed jobseekers, EU/EEA citizens accounted for 8,200 at the end of April, down 3,200 from the year before.

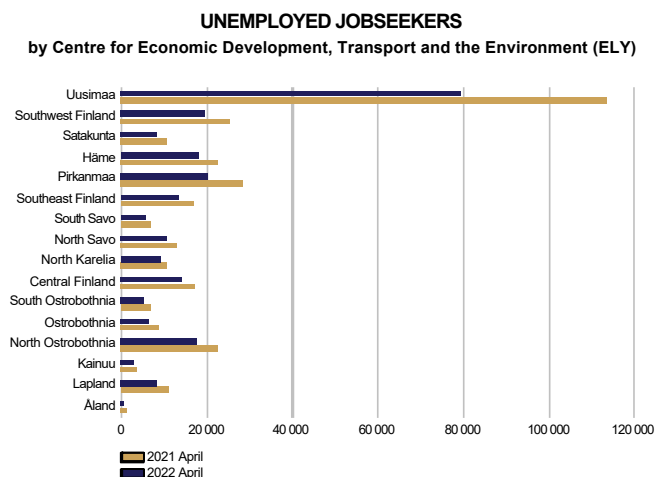
UNEMPLOYED JOBSEEKERS
month by month comparison



In April, 16,600 of unemployed jobseekers were fully laid off, which is 4,300 less than in March. The number of people fully laid off decreased by 37,200 from April a year earlier. In April, the number of job searches among those fully laid off totalled 1,500, representing a decrease of 2,000 on the year before. The number of starting periods of full lay-offs was 4,300, down 9,200 from April a year ago. The number of starting periods of full lay-offs decreased by 600 from March. The number of people fully laid off decreased in all occupational groups; the most in the groups of service and sales workers (-13,300), 'unknown' (-5,500), craft and related trades workers (-4,800), technicians and associate professionals (-3,400) and elementary occupations (-3,100).



Unemployed jobseekers by region



Unemployment decreased in the areas of all ELY Centres

Compared to the same period in the previous year, the number of unemployed jobseekers decreased in April in the areas of all Centres for Economic Development, Transport and the Environment (ELY Centres); the most in Uusimaa (-30%), Pirkanmaa (-29%), Ostrobothnia (-26%) and Lapland (-24%). The number of unemployed jobseekers decreased the least in North Karelia (-15%), Kainuu (-16%), South Savo (-19%), North Savo (-19%) and Central Finland (-19%). The number of unemployed jobseekers fell the most in Åland, by 43%. Compared with March, the number of unemployed jobseekers decreased in the areas of 13 ELY Centres; the most in South Savo (-9%), South Ostrobothnia (-7%) and Southeast Finland (-7%). Unemployment increased from the previous month only in Lapland (2%). In Åland, the number of unemployed jobseekers fell by 14% from March.

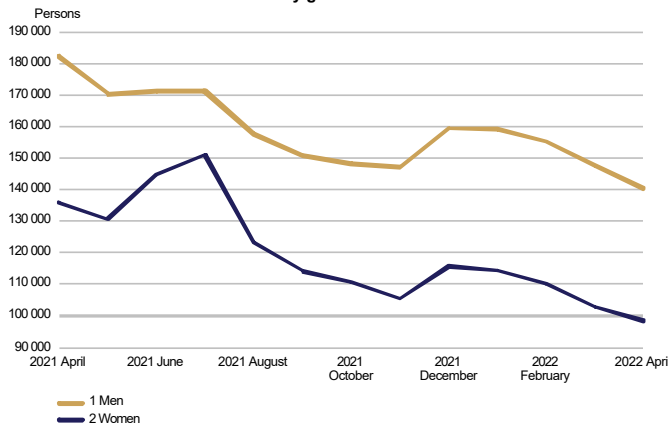
Unemployed jobseekers and jobs vacant in Employment and Economic Development Office by ELY centre

ELY centre	Unemployed jobseekers			Change		Of the Unemployed jobseekers' percentage fully laid off		Jobs vacant			Change	
	Apr 2022	Mar 2022	Apr 2021	Apr 2022	Apr 2021	Apr 2022	Mar 2022	Apr 2022	Mar 2022	Apr 2021	Apr 2022	Apr 2021
Uusimaa	79 633	83 929	113 331	-33 698	-30	4 555	9,0	32 465	35 340	20 267	12 198	60
Southwest Finland	19 387	20 351	25 340	-5 953	-23	1 411	8,5	11 279	11 438	6 965	4 314	62
Satakunta	8 235	8 790	10 694	-2 459	-23	601	8,5	3 430	4 093	2 413	1 017	42
Häme	17 833	18 670	22 548	-4 715	-21	1 323	10,4	8 023	8 652	4 977	3 046	61
Pirkanmaa	20 235	21 341	28 354	-8 119	-29	1 276	8,1	12 485	13 850	7 395	5 090	69
Southeast Finland	13 228	14 173	16 640	-3 412	-21	1 105	10,3	3 653	3 942	2 630	1 023	39
South Savo	5 396	5 916	6 646	-1 250	-19	439	9,6	3 168	4 676	2 419	749	31
North Savo	10 499	10 906	12 945	-2 446	-19	852	9,4	5 325	5 965	3 943	1 382	35
North Karelia	8 929	9 186	10 563	-1 634	-15	613	12,5	1 965	2 610	1 871	94	5
Central Finland	13 872	14 498	17 136	-3 264	-19	934	11,2	4 393	4 929	2 862	1 531	53
South Ostrobothnia	5 238	5 613	6 806	-1 568	-23	565	6,1	5 044	5 234	3 538	1 506	43
Ostrobothnia	6 329	6 561	8 555	-2 226	-26	606	5,6	6 752	9 920	3 018	3 734	124
North Ostrobothnia	17 710	18 522	22 678	-4 968	-22	1 256	9,4	9 002	10 613	6 325	2 677	42
Kainuu	2 961	2 962	3 521	-560	-16	303	9,6	1 448	1 564	1 348	100	7
Lapland	8 434	8 309	11 134	-2 700	-24	687	10,5	5 074	5 616	3 070	2 004	65
Åland	669	776	1 164	-495	-43	54	4,4	472	607	247	225	91
Abroad	199	217	351	-152	-43	69	.	2 972	3 631	1 996	976	49
WHOLE COUNTRY	238 789	250 722	318 408	-79 619	-25	16 649	9,1	116 950	132 680	75 284	41 666	55



Unemployed jobseekers by gender and age-group

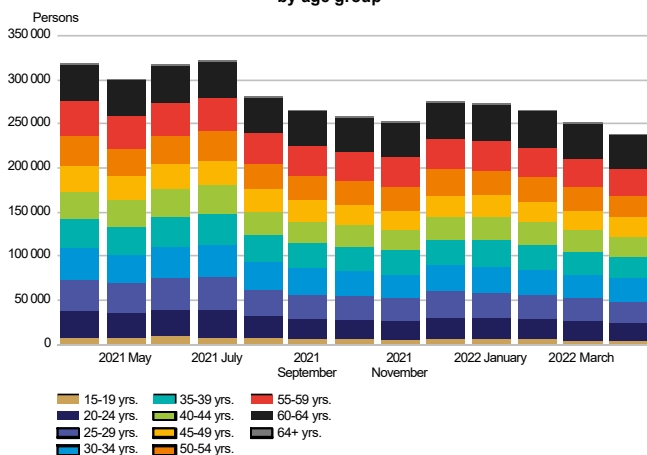
**UNEMPLOYED JOBSEEKERS
by gender**



Unemployment decreased more among women than men

Of the unemployed jobseekers, 140,400 (59%) were men and 98,400 (41%) were women, indicating a decrease of 7,500 for men and 4,400 for women from the figures for March. Compared with April a year ago, unemployment decreased by 42,000 (-23%) among men and by 37,600 (-28%) among women.

**UNEMPLOYED JOBSEEKERS
by age group**



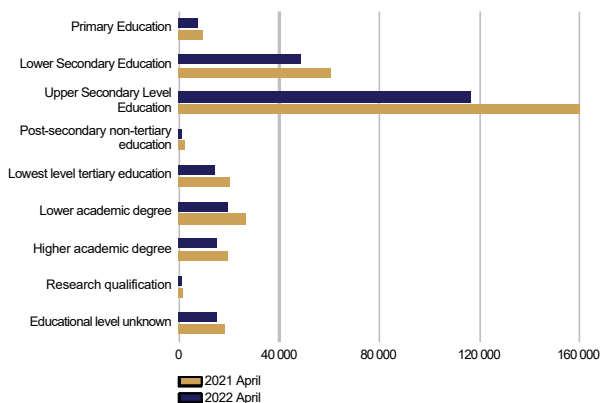
Unemployment decreased in all age groups

At the end of April, unemployed jobseekers under 25 years of age numbered 24,700, representing a decrease of 13,900 from April a year ago. Youth unemployment fell by 1,600 from March. There were 4,400 unemployed persons under 20. Among those over 50, the number of unemployed was 94,800, representing a decrease of 21,400 on the year before. Among those over 55, the number of unemployed was 70,500, representing a decrease of 12,000 on the year before. Unemployment decreased the most among those under 30 (-34%) and the least among those over 60 (-8%). Compared with March, unemployment decreased in all age groups; the most among those aged 15-19 (-7%).



Unemployed jobseekers by levels of education and occupational group

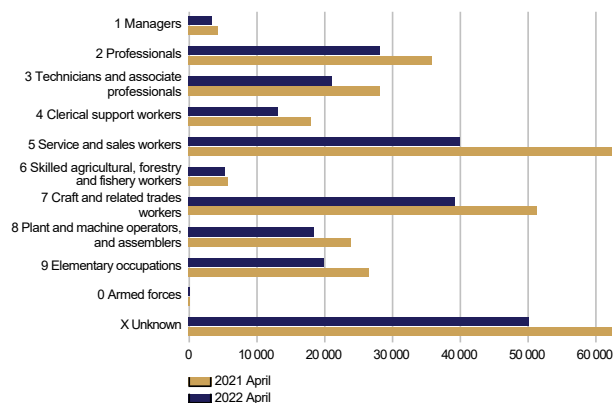
**UNEMPLOYED JOBSEEKERS
by level of education**



Unemployment decreased at all levels of education

Examined by level of education, unemployment decreased from April last year at all levels of education; the decrease was greatest among those with post-secondary non-tertiary education (-39%), lower-degree level tertiary education (-29%), lowest level of tertiary education (-28%) and secondary education (-27%). Unemployment fell the least among those with level of education 'unknown' (-18%) and higher level basic qualifications (-19%).

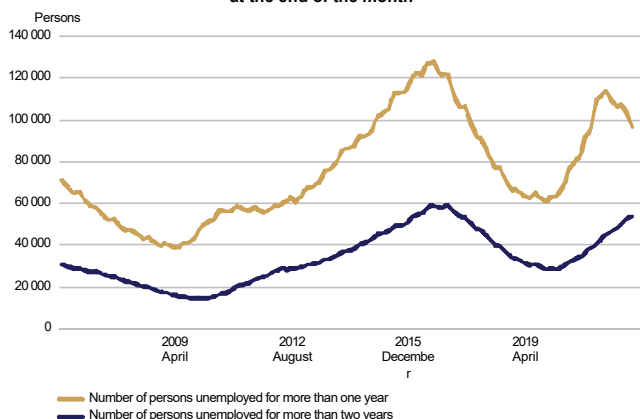
**UNEMPLOYED JOBSEEKERS
by occupational group**



Unemployment decreased in all occupational groups

Examined by occupation, unemployment decreased for all groups from April of last year. The greatest decreases were in the groups of service and sales workers (-22,300), 'unknown' (-12,100), craft and related trades workers (-12,000), professionals (-7,600), and associate professionals and technicians (-7,100). Unemployment decreased the least in the groups of armed forces (-40), skilled agricultural, forestry and fishery workers (-700) and managers (-1,000).

**LONG-TERM UNEMPLOYED
at the end of the month**

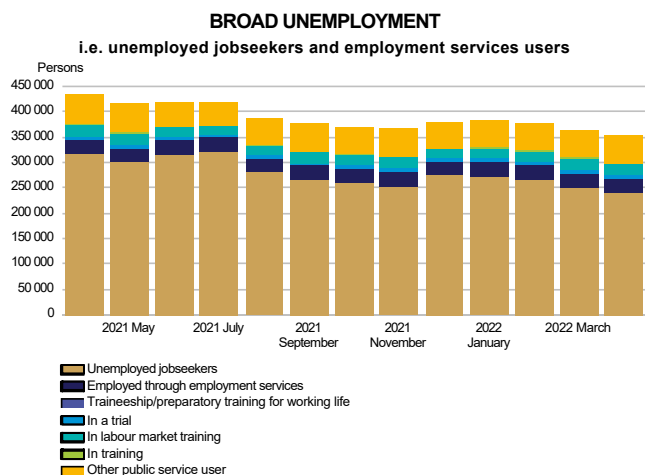


Increase in long-term unemployment

At the end of April, the number of long-term unemployed who had been unemployed without interruption for more than a year amounted to 97,000, down 12,800 on the previous year. Of the long-term unemployed, 58,400 were men and 38,600 were women. The number of men decreased by 7,400 (-11%) from the previous year and the number of women by 5,400 (-12%). Long-term unemployed who had been unemployed without interruption for more than two years numbered 53,700, which is 12,700 more than a year ago.



Services

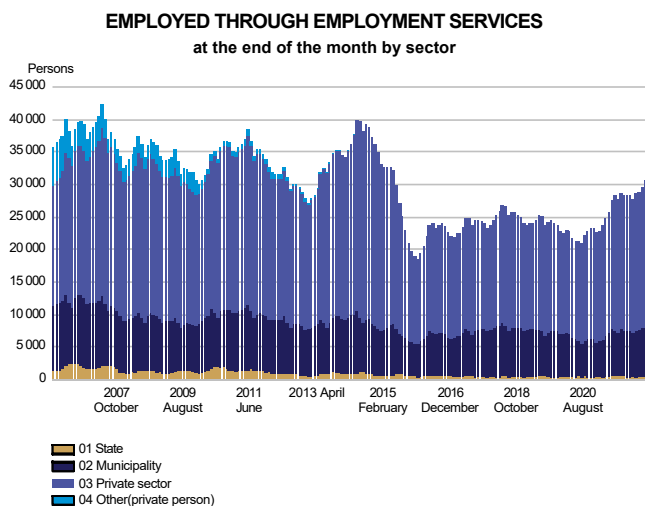


Decrease in the number of persons covered by services

At the end of April, the number of persons covered by services included in the activation rate amounted to 115,500, down 1,500 on the previous year. Compared with March, the number of persons covered by such services increased by 1,300. Of those covered by services, 64,100 were customers of the local government pilots, which is 2,200 more than in April last year. The activation rate at the end of April was 32.6%, which is 5.7 percentage points higher than a year earlier. In all, 4.2% of the labour force were covered by these services.

Of those covered by services, the number of men was 55,200, down 600 on the previous year. The number of women covered by these services was 60,300, down 900 on the previous year.

Broad unemployment, or the total number of unemployed jobseekers and those covered by services, was 354,300 at the end of April. This is 81,100 less than a year earlier. The decrease in broad unemployment was mainly due to a decrease in the number of unemployed.



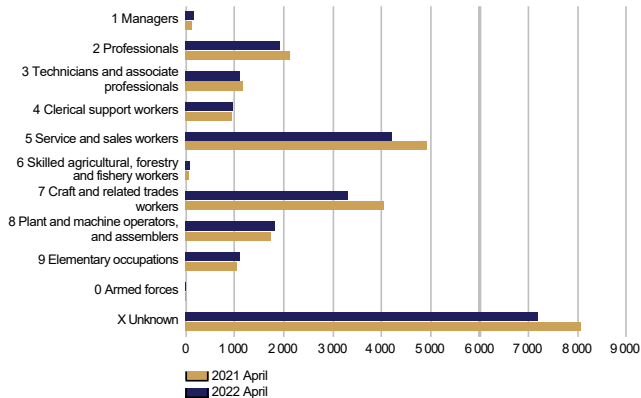
The number of placements increased in all sectors

At the end of April, the number of persons claiming pay subsidies, employed by the State or receiving start-up grants totalled 30,700, which is 4,900 more than the year before. Of those in placements, 2% were in central government jobs, 26% in local government jobs and 72% in the private sector. Since April last year, the number of placements has increased by 22% in local government, 18% in the private sector and 2% in central government. Of those in placements, 52% were men. Placements for men increased by 2,600, and those for women by 2,300 from the previous year.



Labour market training, training and self-motivated studies

PERSONS IN LABOUR MARKET TRAINING
in target profession at the end of the month

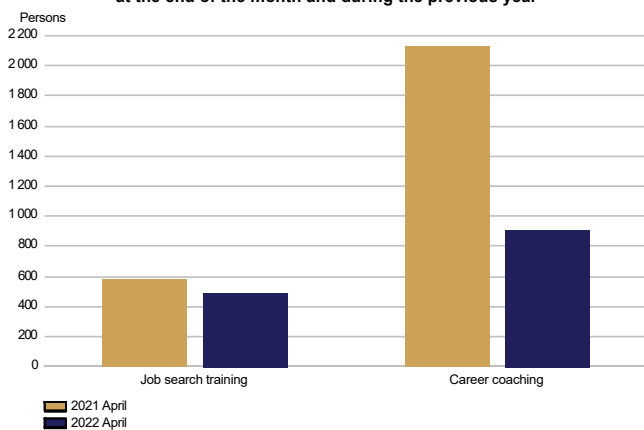


Number of persons in labour market training decreased

At the end of April, labour market training was attended by 21,900 students, down 2,300 on the previous year. Of the students, 10,700 were men and 11,200 were women. The number of men decreased by 800, and the number of women by 1,500 from April last year. During April, 4,000 new students began labour market training, representing a decrease of 200 on the year before.

Based on target occupation, the largest subgroup within the category of 'unknown' were people in integration training (6,500), which is 800 less than the year before.

IN TRAINING
at the end of the month and during the previous year



The number of persons in training decreased

At the end of April, 1,400 persons were in training, which is 1,300 less than the year before. Of those in training, 700 were men and 700 women. Career coaching was provided to 900 participants, which is 1,200 less than a year earlier. The number of participants in job search training decreased by 100 from the year before.

IN SELF-MOTIVATED STUDIES
in person's profession at the end of the month



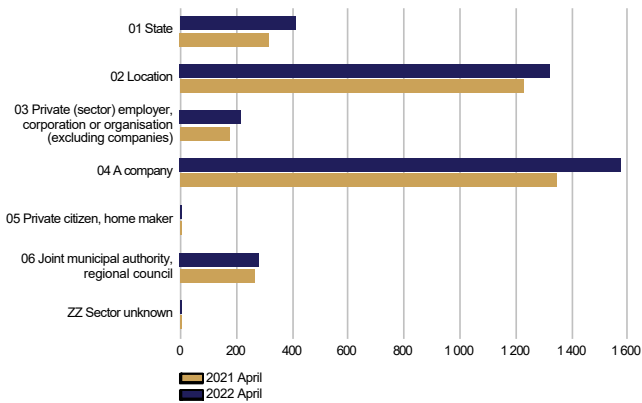
The number of people in self-motivated study decreased from the previous year

Self-motivated studies supported by unemployment benefits were attended by a total of 31,000 people, representing a decrease of 3,300 on the year before. The number of men receiving unemployment benefits for studies was 12,000, down 1,900 on the previous year. Among women, the number was 19,000, representing a decrease of 1,400 on the year before. Occupation was undetermined in case of 9,300 persons in the group of 'unknown', down 700 on the previous year.



Job alternation, rehabilitative work and trials

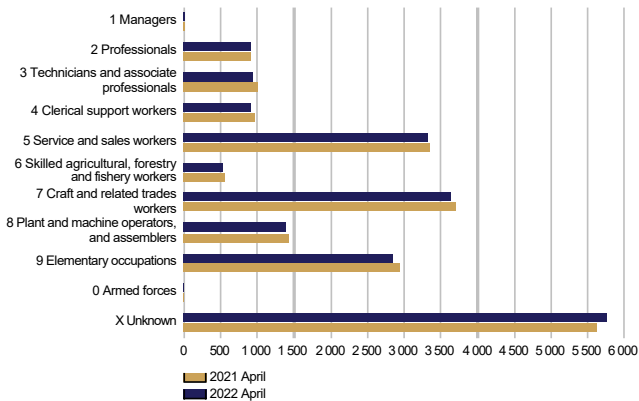
AS A JOB ALTERNATION SUBSTITUTE
at the end of the month and during the previous year by sector



The number of job alternation substitutes increased

A total of 3,800 persons were job alternation substitutes at the end of April, which is 500 more than a year earlier. Of the substitutes, 1,400 were men and 2,400 were women. The number of men increased by 200 and the number of women by 300 from the previous year.

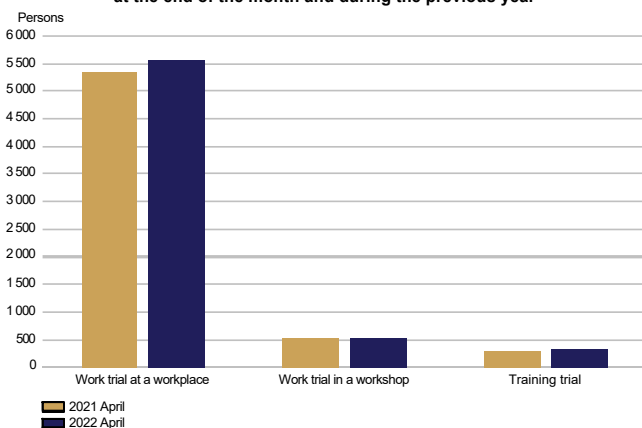
REHABILITATIVE WORK ACTIVITIES
at the end of the month and during the previous year



Fewer participants in rehabilitative work activities than in the previous year

A total of 20,300 persons participated in rehabilitative work activities at the end of April, which is 200 less than a year earlier. Of the participants, 11,400 were men and 9,000 were women. The number of men decreased by 200 and the number of women remained unchanged from the previous year.

IN TRIALS
at the end of the month and during the previous year



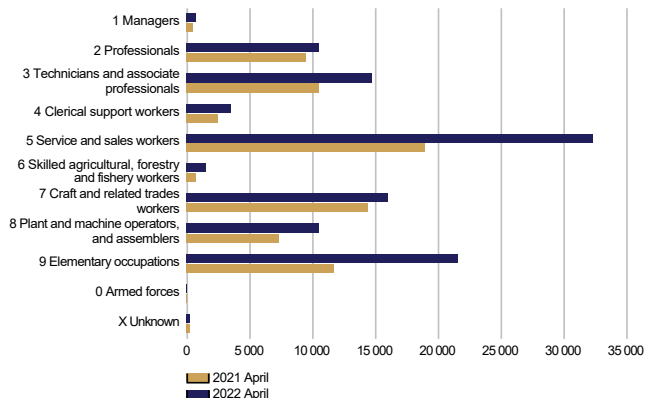
Participation in work and training trials decreased

Work and training trials had a total of 6,400 participants at the end of April, which is 200 more than a year earlier. Of the participants, 3,100 were men and 3,300 were women. The number of men increased by 100 and the number of women by 200 from the previous year.



Jobs vacant

NEW JOB VACANCIES
during the month and during the previous year



Increase in the number of new vacancies from the year before

The number of new vacancies reported to Employment and Economic Development Offices and municipalities participating in the local government pilots on employment during April totalled 111,200, which is 35,100 more than in April last year. In all, the number of unfilled vacancies at Employment and Economic Development Offices in April amounted to 240,700, which was 87,800 more than a year ago. A total of 17,400 of these vacancies were filled during April, 3,500 of them through Employment and Economic Development Offices. A total of 104,300 vacancies were closed for applications because the application period had ended or because there was a sufficient number of applicants. In addition, a total of 7,600 vacancies were cancelled and 2,200 vacancies could not be filled. The number of vacancies remaining unfilled at Employment and Economic Development Offices and in local government pilots at the end of April was 117,000, up 41,700 on the previous year.

The number of new vacancies had increased in all occupational groups, with the exception of armed forces. The greatest increases were in the groups of service and sales workers (13,400), elementary occupations (9,800), technicians and associate professionals (4,200) and plant and machine operators, and assemblers (3,100).



Summary table

EMPLOYMENT SITUATION AT THE END OF 2022 APRIL (I) AND
ACTIVITIES OF EMPLOYMENT AND ECONOMIC DEVELOPMENT OFFICES DURING APRIL (II)
WHOLE COUNTRY

I EMPLOYMENT SITUATION AT THE END OF MONTH	Apr-22	Apr-21	CHANGE NUMBER	CHANGE %
A. JOBSEEKERS				
1. Unemployed jobseekers	238 789	318 408	-79 619	-25,0
of whom fully laid off	16 649	53 890	-37 241	-69,1
2. On reduced working week	6 826	16 269	-9 443	-58,0
3. Those who have work	169 750	208 962	-39 212	-18,8
of whom in the general labour market	148 179	189 131	-40 952	-21,7
of whom employed through employment services	21 571	19 831	1 740	8,8
4. Persons outside the labour force	102 348	113 685	-11 337	-10,0
of whom in services promoting employment	26 425	26 525	-100	-0,4
of whom in training	57 894	66 861	-8 967	-13,4
1-4 Total of jobseekers	517 713	657 324	-139 611	-21,2
B. LABOUR DEMAND				
1. Jobs vacant	116 950	75 284	41 666	55,3
of those notified for over a month	49 613	26 822	22 791	85,0
of those notified for over 2 months	32 967	18 647	14 320	76,8
C. PARTICIPATING IN SERVICES				
1. Employed by the State	515	504	11	2,2
2. Employed by municipalities	8 063	6 631	1 432	21,6
3. Employed by the private sector	22 109	18 668	3 441	18,4
1-3 Total number of employed people	30 687	25 803	4 884	18,9
4. Labour market training	21 851	24 176	-2 325	-9,6
5. Training	1 397	2 706	-1 309	-48,4
6. Engaged in work/training trials	6 437	6 197	240	3,9
7. As a job alternation substitute	3 820	3 337	483	14,5
8. Rehabilitative work	20 324	20 502	-178	-0,9
9. Self-motivated studies supported by unemployment benefit	30 986	34 273	-3 287	-9,6
1-9 Total number of people participating in services	115 502	116 994	-1 492	-1,3
D. STRUCTURE OF UNEMPLOYMENT				
1. Unemployed women	98 432	136 031	-37 599	-27,6
2. Unemployed men	140 357	182 377	-42 020	-23,0
3. Under 25 years old	24 702	38 606	-13 904	-36,0
4. Over 50 years old	94 766	116 175	-21 409	-18,4
5. Unemployed over a year	96 953	109 735	-12 782	-11,6
6. Foreign unemployed	27 620	34 806	-7 186	-20,6
E. UNEMPLOYMENT SECURITY				
1. Unemployed members of employees' unemployment funds	87 244	135 675	-48 431	-35,7
II EMPLOYMENT SITUATION DURING THE MONTH				
1. Unemployed jobseekers	270 576	356 102	-85 526	-24,0
2. Other jobseekers	283 531	331 323	-47 792	-14,4
1-2 Total number of jobseekers	554 107	687 425	-133 318	-19,4
3. Vacancies during a month	240 731	152 882	87 849	57,5
New vacancies during a month	111 209	76 116	35 093	46,1
Vacancies filled during a month	17 417	10 728	6 689	62,4
of those filled with job-seekers at the Employment Service	3 492	2 511	981	39,1
Vacancies application period ended or sufficient number of applicants	104 298	62 919	41 379	65,8
Vacancies cancelled or could not be filled	9 809	6 226	3 583	57,5
4. Started spell of unemployment	30 194	38 331	-8 137	-21,2
5. Completed spell of unemployment	36 584	44 889	-8 305	-18,5
6. New jobs found through employment services	3 075	2 739	336	12,3
7. New entrants to labour market training	4 011	4 215	-204	-4,8



Foreigners' summary table

FOREIGNERS' EMPLOYMENT SITUATION AT THE END OF 2022 APRIL (I) AND
ACTIVITIES OF EMPLOYMENT AND ECONOMIC DEVELOPMENT OFFICES DURING APRIL (II)
WHOLE COUNTRY

I EMPLOYMENT SITUATION AT THE END OF MONTH	Apr-22	Apr-21	CHANGE NUMBER	CHANGE %
A. JOBSEEKERS				
1. Unemployed jobseekers	27 620	34 806	-7 186	-20,6
of whom fully laid off	2 049	6 089	-4 040	-66,3
2. On reduced working week	447	1 077	-630	-58,5
3. Those who have work	18 655	20 135	-1 480	-7,4
of whom in the general labour market	16 847	18 494	-1 647	-8,9
of whom employed through employment services	1 808	1 641	167	10,2
4. Persons outside the labour force	28 995	30 793	-1 798	-5,8
of whom in services promoting employment	2 764	2 660	104	3,9
of whom in training	23 944	25 765	-1 821	-7,1
1-4 Total of jobseekers	75 717	86 811	-11 094	-12,8
C. PARTICIPATING IN SERVICES				
1. Employed by the State	6	8	-2	-25,0
2. Employed by municipalities	540	444	96	21,6
3. Employed by the private sector	1 776	1 466	310	21,1
1-3 Total number of employed people	2 322	1 918	404	21,1
4. Labour market training	9 481	9 884	-403	-4,1
5. Training	128	155	-27	-17,4
6. Engaged in work/training trials	1 416	1 204	212	17,6
7. As a job alternation substitute	61	47	14	29,8
8. Rehabilitative work	1 189	1 342	-153	-11,4
9. Self-motivated studies supported by unemployment benefit	13 774	15 098	-1 324	-8,8
1-9 Total number of people participating in services	28 371	29 648	-1 277	-4,3
D. STRUCTURE OF UNEMPLOYMENT				
1. Unemployed women	13 597	16 204	-2 607	-16,1
2. Unemployed men	14 023	18 602	-4 579	-24,6
3. Under 25 years old	1 692	2 241	-549	-24,5
4. Over 50 years old	7 709	9 063	-1 354	-14,9
5. Unemployed over a year	9 374	10 150	-776	-7,6
E. UNEMPLOYMENT SECURITY				
1. Unemployed members of employees' unemployment funds	5 337	8 488	-3 151	-37,1
II EMPLOYMENT SITUATION DURING THE MONTH				
1. Unemployed jobseekers	31 882	38 909	-7 027	-18,1
2. Other jobseekers	47 650	50 340	-2 690	-5,3
1-2 Total number of jobseekers	79 532	89 249	-9 717	-10,9
4. Started spell of unemployment	4 326	4 202	124	3,0
5. Completed spell of unemployment	4 490	4 478	12	0,3
6. New jobs found through employment services	216	181	35	19,3
7. New entrants to labour market training	1 628	1 452	176	12,1



Regional table

UNEMPLOYED JOBSEEKERS AND JOBS VACANT BY ELY CENTRE AT THE END OF 2022 APRIL
WHOLE COUNTRY

ELY centre	Workforce	Unemployed jobseekers							Unemployed over a year	Disabled and chron. ill	Jobs vacant
		% of workforce	Total	Men	Women	Under 20 years old	Under 25 years old	Over 50 years old			
Uusimaa	882 835	9,0	79 633	44 273	35 360	1 092	6 904	29 795	37 916	7 520	32 465
Southwest Finland	229 281	8,5	19 387	11 238	8 149	377	2 023	7 315	7 515	2 453	11 279
Satakunta	96 399	8,5	8 235	4 985	3 250	209	926	3 665	2 924	1 187	3 430
Häme	171 145	10,4	17 833	10 507	7 326	316	1 721	7 926	8 456	3 093	8 023
Pirkanmaa	250 112	8,1	20 235	11 673	8 562	342	2 125	7 450	7 038	2 398	12 485
Southeast Finland	128 257	10,3	13 228	7 965	5 263	275	1 269	6 116	4 200	1 673	3 653
South Savo	56 237	9,6	5 396	3 400	1 996	122	600	2 515	1 803	1 060	3 168
North Savo	112 235	9,4	10 499	6 601	3 898	175	1 218	4 396	4 420	1 645	5 325
North Karelia	71 466	12,5	8 929	5 597	3 332	164	971	4 031	3 493	1 268	1 965
Central Finland	124 371	11,2	13 872	8 407	5 465	347	1 872	5 259	5 588	1 506	4 393
South Ostrobothnia	85 739	6,1	5 238	3 256	1 982	130	711	2 088	1 309	954	5 044
Ostrobothnia	112 620	5,6	6 329	3 853	2 476	129	656	2 529	2 025	971	6 752
North Ostrobothnia	189 174	9,4	17 710	10 647	7 063	502	2 482	6 133	6 662	2 220	9 002
Kainuu	30 908	9,6	2 961	1 968	993	59	295	1 493	714	521	1 448
Lapland	80 384	10,5	8 434	5 490	2 944	154	846	3 761	2 617	1 086	5 074
Åland	15 093	4,4	669	359	310	12	73	230	191	...	472
Abroad	0	0,0	199	137	62	0	9	64	80	...	2 972
Total	2 636 256	9,1	238 789	140 357	98 432	4 406	24 702	94 766	96 953	29 594	116 950



Information about the website

On this website you will find the latest statistics from the Ministry of Economic Affairs and Employment's monthly Employment Bulletin. You can access a .pdf version of the current and previous months' Employment Bulletin by following the link on the right. The Employment Bulletin is based on the data from the MEAE's Employment Service Statistics. The Ministry of Economic Affairs and Employment compiles statistics on the clients of the Employment and economic development offices (TE offices), including registered job-seekers, labour market policy services, and job vacancies reported to TE offices by employers. The data is collected from the customer service registry (URA) used by the TE offices. This means that the data used by MEAE Employment Service Statistics is completely registry-based. The statistical data covers all persons, services, and open vacancies in the aforementioned groups, as separately defined in the registry by the classifications and variables for the statistical period in question.

Owing to seasonal variations, the Employment Bulletin always includes a comparison with the corresponding month in the previous year. The descriptors used in the Bulletin are also available in a table format. The Employment Bulletins are published at the end of the subsequent calendar month. The official date of publication is announced in advance.

The following symbols have been used:

. Category not applicable

... Data subject to secrecy

Links:

- **Employment Service Statistics online:**

- <https://www.tem.fi/en/employment-bulletin-and-employment-service-statistics>

- **Employment Service Statistics, Description and Quality Description**

- <https://www.tem.fi/en/release-dates-of-statistics-and-description-and-quality-description>

- **You can access key information from MEAE's Employment Service Statistics by visiting the Statistics Finland's StatFin database:**

- <https://statfin.stat.fi/PxWeb/pxweb/en/StatFin/>

- **The Employment Service Statistics data is also available from the MEAE Publications page (only available in Finnish).**

- <https://www.tem.fi/tyopoliittinen-aikakauskirja>

- **Comparison between the statistics of Statistics Finland and the Ministry of Economic Affairs and Employment**

- https://www.stat.fi/til/tyti/tyti_2019-09-13_men_001_en.html

- **Comparison between the Job Vacancy Survey of Statistics Finland and Employment Service Statistics of the Ministry of Economic Affairs and Employment**

- https://tilastokeskus.fi/til/atp/atp_2017-01-02_men_001.html

- **Local government pilots on employment(In Finnish):**

- [https://app.powerbi.com/view?](https://app.powerbi.com/view?r=eyJrIjoiaMzA0M2ViOWQtOTlwYy00ZjZjLWJjOTgtZDRkOGFmMTc0NGExliwidCI6ImQ5NTk1MWE2LWVmZD)

- [r=eyJrIjoiaMzA0M2ViOWQtOTlwYy00ZjZjLWJjOTgtZDRkOGFmMTc0NGExliwidCI6ImQ5NTk1MWE2LWVmZD](https://app.powerbi.com/view?r=eyJrIjoiaMzA0M2ViOWQtOTlwYy00ZjZjLWJjOTgtZDRkOGFmMTc0NGExliwidCI6ImQ5NTk1MWE2LWVmZD)

Instructions for referencing:

Official Statistics of Finland (OSF): Ministry of Economic Affairs and Employment / Employment Service Statistics. ISSN 1797-3694 202Y:MM, Employment Bulletin, MONTH 202Y. Helsinki: Ministry of Economic Affairs and Employment. (date of reference). Available at:
<https://www.temtyollisyyskatsaus.fi>



Contact information

Ministry of Economic Affairs and Employment

Employment and Well-Functioning Markets Department

Kaisa-Mari Kuusela, +358 29 504 8294

Petri Syvänen, +358 29 504 8050

Suvi Timonen, +358 29 504 7288

E-mail: [firstname.lastname\(at\)gov.fi](mailto:firstname.lastname(at)gov.fi) /
[temtyonvalitystilasto\(at\)gov.fi](mailto:temtyonvalitystilasto(at)gov.fi)

<https://www.temtyollisyyskatsaus.fi>

ISSN: 1797-3694 (online publication)

