



Employment Bulletin

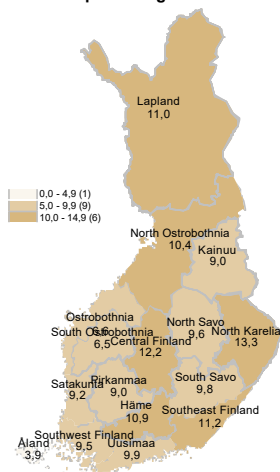
June 2022



Ministry of Economic Affairs
and Employment of Finland

In June, 259,800 unemployed jobseekers

Unemployed jobseekers' percentage of the workforce by ELY centre



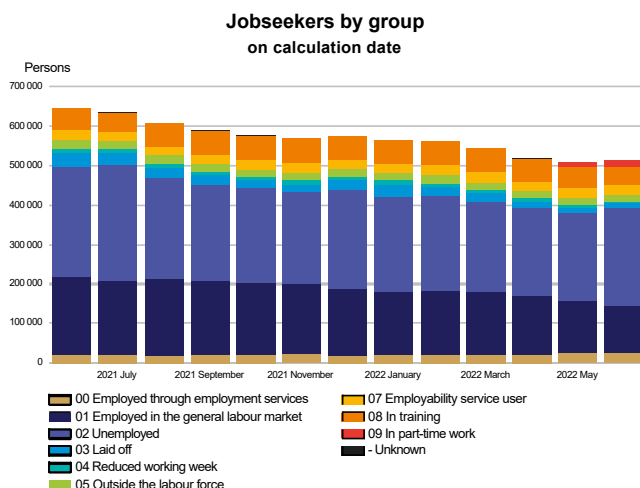
At the end of June, a total of 259,800 unemployed jobseekers were registered at the Employment and Economic Development Offices and municipalities participating in the local government pilots on employment. This is 56,400 fewer than a year earlier, and 24,400 more than the previous month. Unemployed jobseekers accounted for 9.9% of the labour force, which is 2.1 percentage points less than the year before. The figures are from the Employment Service Statistics of the Ministry of Economic Affairs and Employment.

Trends:

- Total number of all jobseekers decreased by 128,600
- The number of unemployed jobseekers decreased by 56,400 from the previous year
- The number of people fully laid off decreased by 21,700
- Services included in the activation rate had 500 less people than a year ago
- 15,300 more new job vacancies compared to the previous year



All jobseekers



The total number of jobseekers decreased

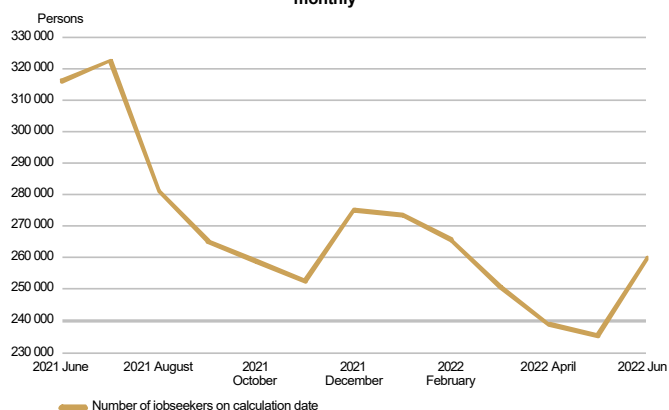
At the end of June, the number of jobseekers registered at the Employment and Economic Development Offices and municipalities participating in the local government pilots on employment totalled 513,200, down 128,600 on the previous year. Of the jobseekers, 254,100 were men and 259,100 were women. Compared to the situation a year ago, the number of men decreased by 66,400 and the number of women by 62,200. Of the jobseekers, 237,200, or 1,500 less than a year earlier, were customers of municipalities participating in the local government pilots on employment.

Of the jobseekers, 159,200 were employed: 122,200 of them were in full-time work, 14,900 were in part-time work and 22,100 were employed through the services organised by the employment and economic development administration and local government pilots on employment. The number of jobseekers outside the labour force was 88,500, of whom 24,800 were in services promoting employment and 46,400 in training. Of the jobseekers, 259,800 were unemployed jobseekers, which is 56,400 fewer than the year before. In June, 12,400 of unemployed jobseekers were fully laid off, which is 400 more than in May. The number of people fully laid off decreased by 21,700 from June a year earlier. Furthermore, jobseekers on a reduced working week numbered 5,700, representing a decrease of 7,400 from the year before.



Unemployed jobseekers

UNEMPLOYED JOBSEEKERS
monthly

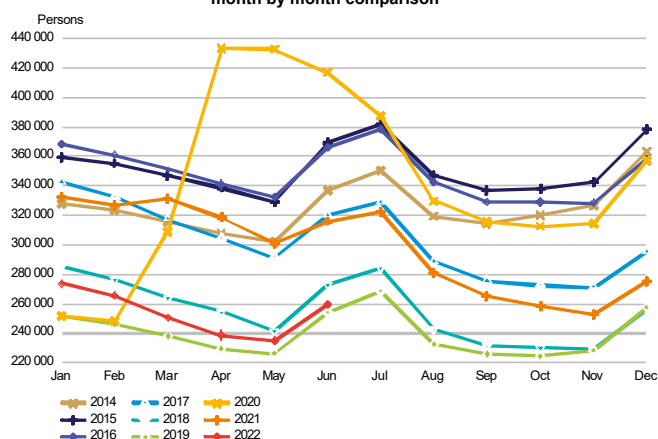


Decrease in unemployed jobseekers in June

At the end of June, the number of unemployed jobseekers registered at the Employment and Economic Development Offices and municipalities participating in the local government pilots on employment totalled 259,800, down 56,400 on the previous year. Compared with May, the number of unemployed jobseekers increased by 24,400. Of the unemployed jobseekers, 142,500, or 21,000 fewer than in June a year ago, were customers of municipalities participating in the local government pilots on employment. The number of new job searches among unemployed jobseekers totalled 18,200, up 400 from June a year ago. In June, the number of starting periods of unemployment totalled 53,500, representing a decrease of 6,100 on the year before. The number of starting periods of unemployment increased by 17,700 from May. The number of starting periods is always greater than the number of job searches because new unemployment periods are also registered from the existing groups of jobseekers.

The number of foreign citizens among unemployed jobseekers totalled 33,500, down 4,200 from June a year ago. Of these foreign unemployed jobseekers, EU/EEA citizens accounted for 8,600 at the end of June, down 2,300 from the year before.

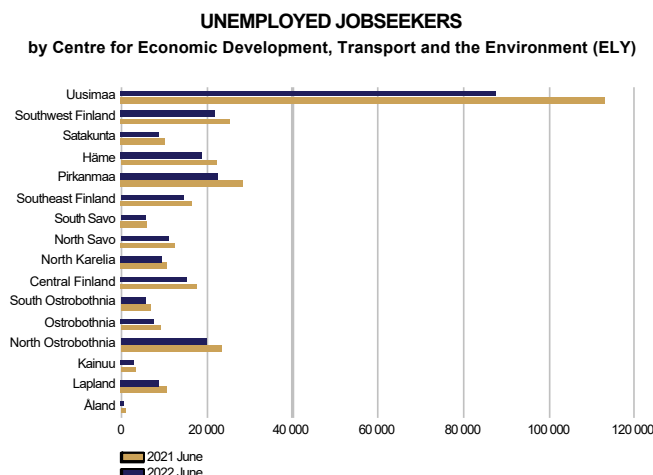
UNEMPLOYED JOBSEEKERS
month by month comparison



In June, 12,400 of unemployed jobseekers were fully laid off, which is 400 more than in May. The number of people fully laid off decreased by 21,700 from June a year earlier. In June, the number of job searches among the fully laid off people totalled 1,300, representing a decrease of 300 on the year before. The number of starting periods of full lay-offs was 4,700, down 2,300 from June a year ago. The number of starting periods of full lay-offs increased by 700 from May. The number of people fully laid off decreased in all occupational groups; the greatest increases were in the groups of service and sales workers (-7,200), 'unknown' (-3,100), craft and related trades workers (-2,800), and associate professionals and technicians (-2,100).



Unemployed jobseekers by region



Unemployment decreased in the areas of all ELY Centres

Compared to the same period in the previous year, the number of unemployed jobseekers decreased in June in the areas of all Centres for Economic Development, Transport and the Environment (ELY Centres); the most in Uusimaa (-23%), Pirkanmaa (-20%), Ostrobothnia (-18%), Lapland (-17%) and Häme (-16%). The number of unemployed jobseekers decreased the least in North Karelia (-11%), South Savo (-11%), and Southeast Finland (-12%). The number of unemployed jobseekers fell the most in Åland, by 39%. Compared to May, the number of unemployed jobseekers increased in the areas of all ELY Centres; the most in Ostrobothnia (23%), North Ostrobothnia (15%) and Pirkanmaa (13 %). In Åland, the number of unemployed jobseekers fell compared to May (-4 %).

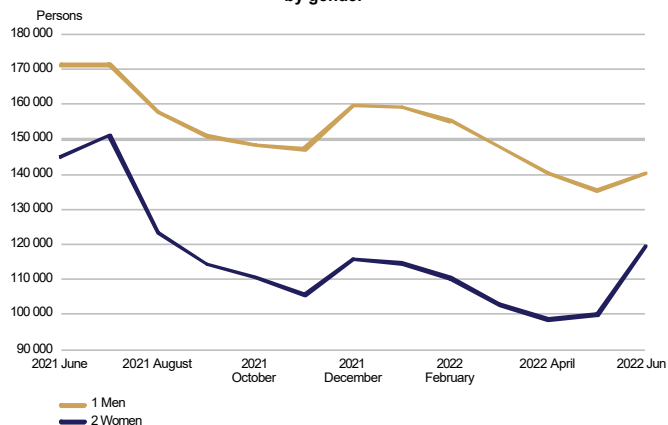
Unemployed jobseekers and jobs vacant in Employment and Economic Development Office by ELY centre

ELY centre	Unemployed jobseekers			Change		Of the Unemployed		Jobs vacant			Change	
	Jun 2022	May 2022	Jun 2021	Jun 2022	Jun 2021	unemployed jobseekers fully laid off	jobseekers' percentage of the workforce	Jun 2022	May 2022	Jun 2021	Jun 2022	Jun 2021
Uusimaa	87 444	80 337	112 947	-25 503	-23	3 598	9,9	23 620	27 362	17 276	6 344	37
Southwest Finland	21 774	19 583	25 329	-3 555	-14	1 254	9,5	8 011	9 640	5 888	2 123	36
Satakunta	8 825	7 919	10 305	-1 480	-14	419	9,2	2 582	3 023	2 165	417	19
Häme	18 626	17 271	22 190	-3 564	-16	971	10,9	6 460	6 686	4 125	2 335	57
Pirkanmaa	22 619	19 976	28 263	-5 644	-20	981	9,0	9 406	10 532	7 818	1 588	20
Southeast Finland	14 337	12 926	16 257	-1 920	-12	731	11,2	2 700	3 240	2 423	277	11
South Savo	5 489	5 224	6 148	-659	-11	223	9,8	1 997	2 652	1 554	443	29
North Savo	10 811	9 917	12 474	-1 663	-13	522	9,6	4 081	4 743	3 689	392	11
North Karelia	9 504	8 524	10 623	-1 119	-11	423	13,3	1 926	1 684	1 236	690	56
Central Finland	15 184	13 665	17 611	-2 427	-14	627	12,2	3 669	3 943	2 509	1 160	46
South Ostrobothnia	5 574	4 981	6 578	-1 004	-15	435	6,5	3 459	4 142	2 652	807	30
Ostrobothnia	7 456	6 085	9 148	-1 692	-18	487	6,6	4 824	5 232	2 335	2 489	107
North Ostrobothnia	19 709	17 147	23 185	-3 476	-15	970	10,4	5 745	6 585	4 888	857	18
Kainuu	2 778	2 594	3 254	-476	-15	151	9,0	1 210	1 385	1 076	134	12
Lapland	8 856	8 423	10 610	-1 754	-17	509	11,0	5 240	5 124	2 726	2 514	92
Åland	593	616	974	-381	-39	17	3,9	271	385	335	-64	-19
Abroad	208	189	314	-106	-34	50	.	3 052	3 162	1 825	1 227	67
WHOLE COUNTRY	259 789	235 379	316 212	-56 423	-18	12 368	9,9	88 253	99 520	64 520	23 733	37



Unemployed jobseekers by gender and age-group

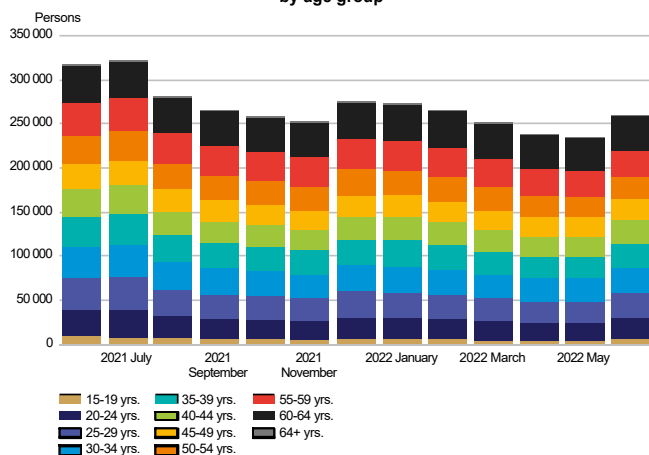
**UNEMPLOYED JOBSEEKERS
by gender**



Unemployment decreased by an equal percentage among women and men

Of the unemployed jobseekers, 140,300 (54%) were men and 119,500 (46%) were women, indicating an increase of 4,800 for men and an increase of 19,600 for women from the figures for May. Compared with June a year ago, unemployment decreased by 31,000 (-18%) among men and by 25,400 (-18%) among women.

**UNEMPLOYED JOBSEEKERS
by age group**



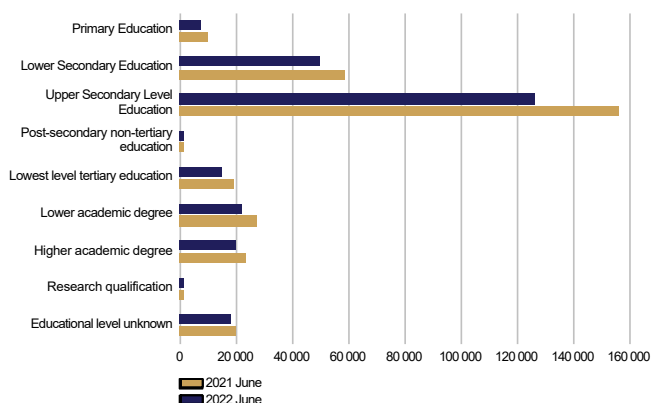
Unemployment decreased in all age groups

At the end of June, unemployed jobseekers under 25 years of age numbered 29,800, representing a decrease of 10,600 from June a year ago. Youth unemployment increased from May by 4,900. For those under 20, the number of unemployed was 6,800. Among those over 50, the number of unemployed was 95,200, representing a decrease of 16,400 on the year before. Among those over 55, the number of unemployed was 70,100, representing a decrease of 9,300 on the year before. Unemployment decreased the most among those under 25 (-26%) and the least among those over 60 (-6%). Compared with May, unemployment increased in all age groups; the most among those under 20 (48%).



Unemployed jobseekers by levels of education and occupational group

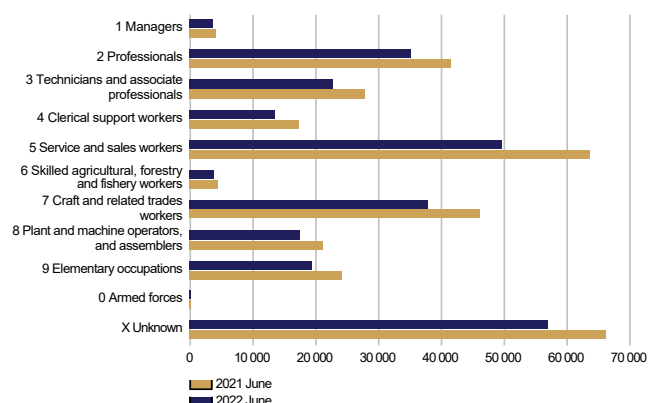
UNEMPLOYED JOBSEEKERS
by level of education



Unemployment decreased at all levels of education

Examined by level of education, unemployment decreased from June last year at all levels of education; the decrease was greatest among those with post-secondary non-tertiary education (-24%), lower level basic qualifications (-23%), lowest level of tertiary education (-21%), secondary education (-19%) and lower-degree level tertiary education (-19%). Unemployment fell the least among those with level of education 'unknown' (-9%), doctorate or equivalent level tertiary education (-15%) and higher level basic qualifications (-15 %).

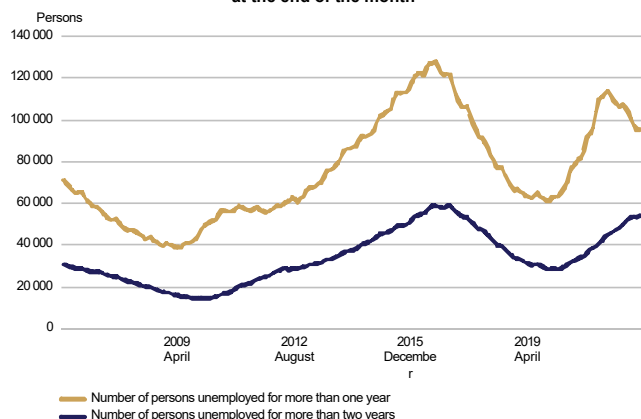
UNEMPLOYED JOBSEEKERS
by occupational group



Unemployment decreased in all occupational groups

Examined by occupation, unemployment decreased for all groups from June of last year. The greatest decreases were in the groups of service and sales workers (-13,900), 'unknown' (-9,200), craft and related trades workers (-8,400), professionals (-6,100), and associate professionals and technicians (-5,000). Unemployment decreased the least in the groups of armed forces (-20), skilled agricultural, forestry and fishery workers (-700) and managers (-800).

LONG-TERM UNEMPLOYED
at the end of the month

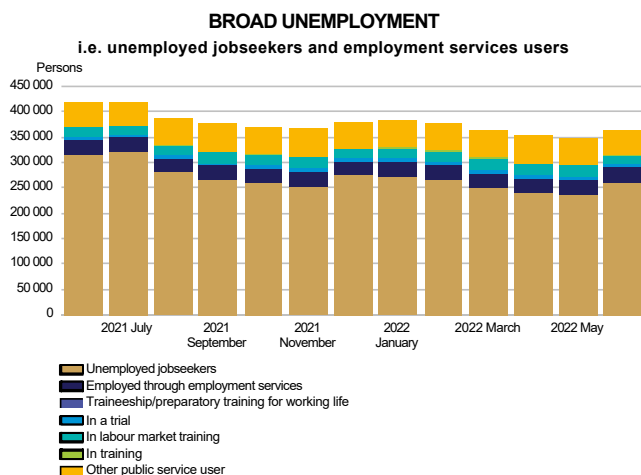


Decrease in long-term unemployment

At the end of June, the number of long-term unemployed who had been unemployed without interruption for more than a year amounted to 95,500, down 16,900 on the previous year. Of the long-term unemployed, 57,200 were men and 38,300 were women. The number of men decreased by 9,200 (-14%) from the previous year and the number of women by 7,700 (-17%). The number of long-term unemployed who had been unemployed without interruption for more than two years numbered 54,000, which is 10,100 more than a year ago.



Services

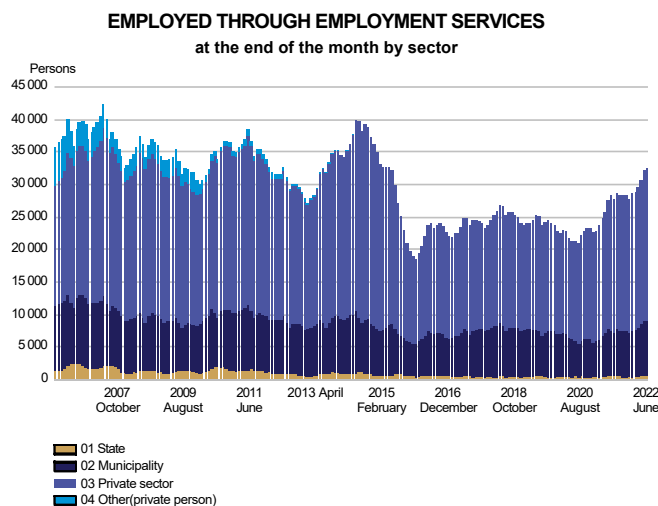


Decrease in the number of persons covered by services

At the end of June, the number of persons covered by services included in the activation rate amounted to 103,400, down 500 on the previous year. Compared with May, the number of persons covered by such services decreased by 9,200. Of those covered by services, 57,500 were customers of the local government pilots, which is 3,000 more than in June last year. The activation rate at the end of June was 28.5%, which is 3.8 percentage points higher than a year earlier. In all, 3.5% of the labour force were covered by these services.

Of those covered by services, the number of men was 51,000, which is the same as last year. The number of women covered by these services was 52,400, down 500 on the previous year.

Broad unemployment, or the total number of unemployed jobseekers and those covered by services, was 363,200 at the end of June. This is 56,900 less than a year earlier. The decrease in broad unemployment was mainly due to a decrease in the number of unemployed.



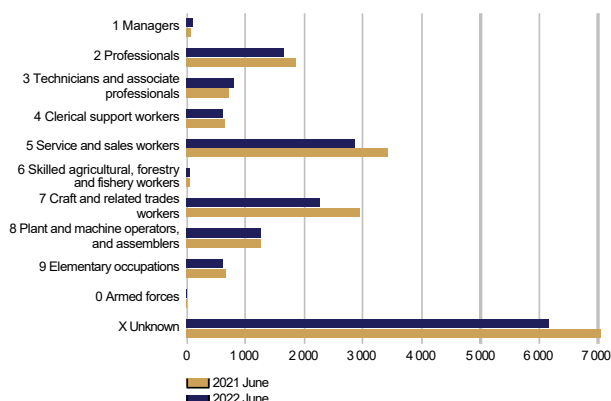
The number of placements increased in all sectors

At the end of June, the number of persons claiming pay subsidies, employed by the State or receiving start-up grants totalled 32,400, which is 4,200 more than the year before. Of those in placements, 2% were in central government jobs, 26% in local government jobs and 72% in the private sector. Since June last year, the number of placements has increased by 20% in local government jobs, by 13% in the private sector and by 2% in government jobs. Of those employed, 54% were men. Placements for men increased by 2,300, and those for women by 1,900 from the previous year.



Labour market training, training and self-motivated studies

PERSONS IN LABOUR MARKET TRAINING
in target profession at the end of the month

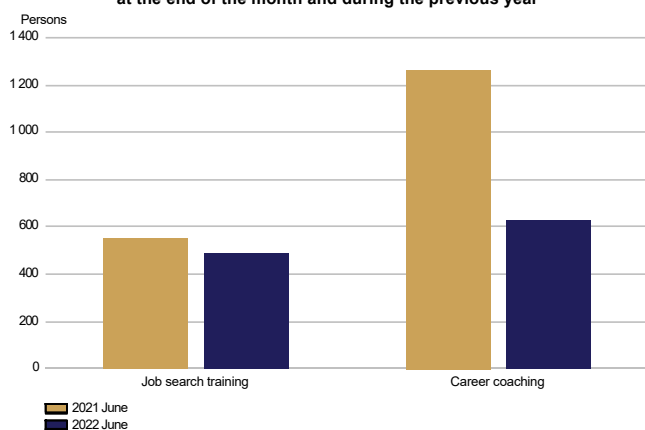


The number of persons in labour market training decreased

At the end of June, labour market training was attended by 16,400 students, down 2,300 on the previous year. Of the students, 7,800 were men and 8,500 were women. The number of men decreased by 1,000, and the number of women by 1,300 from June last year. During June, 1,500 new students began labour market training, representing a decrease of 200 on the year before.

Based on target occupation, the largest subgroup within the category of 'unknown' were people in integration training (5,700), which is 1,000 less than the year before.

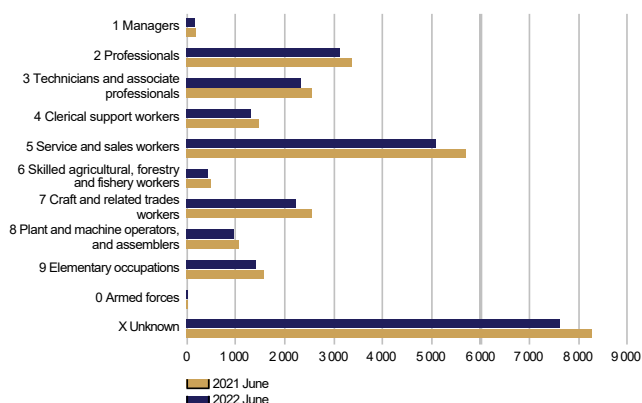
IN TRAINING
at the end of the month and during the previous year



The number of persons in training decreased

At the end of June, 1,100 persons were in training, which is 700 less than the year before. Of those in training, 600 were men and 600 women. Career coaching was provided to 600 participants, which is 600 less than a year earlier. The number of participants in job search training decreased by 100 from the year before.

IN SELF-MOTIVATED STUDIES
in person's profession at the end of the month



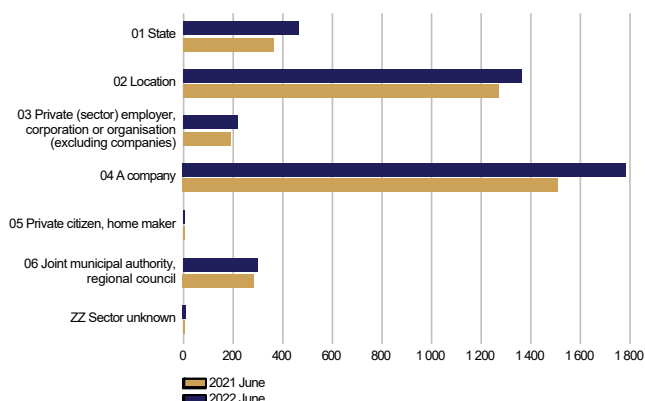
The number of people in self-motivated study decreased from the previous year

Self-motivated studies supported by unemployment benefits were attended by a total of 24,600 people, representing a decrease of 2,600 on the year before. The number of men receiving unemployment benefits for studies was 9,600, down 1,400 on the previous year. Among women, the number was 15,100, representing a decrease of 1,200 on the year before. Occupation was undetermined in case of 6,800 persons in the group of 'unknown', down 500 on the previous year.



Job alternation, rehabilitative work and trials

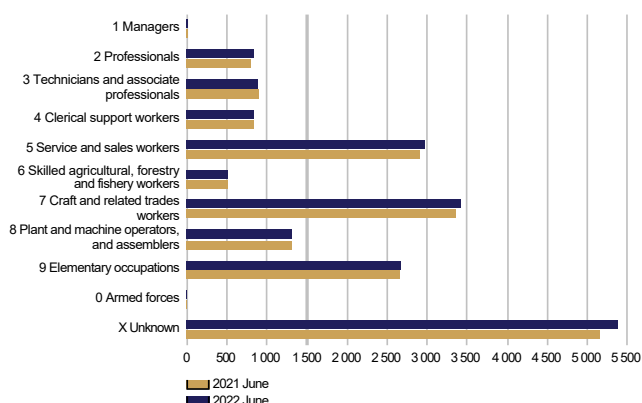
AS A JOB ALTERNATION SUBSTITUTE
at the end of the month and during the previous year by sector



The number of job alternation substitutes increased

A total of 4,100 persons were job alternation substitutes at the end of June, which is 500 more than a year earlier. Of the substitutes, 1,600 were men and 2,600 were women. The number of men increased by 200 and the number of women by 300 from the previous year.

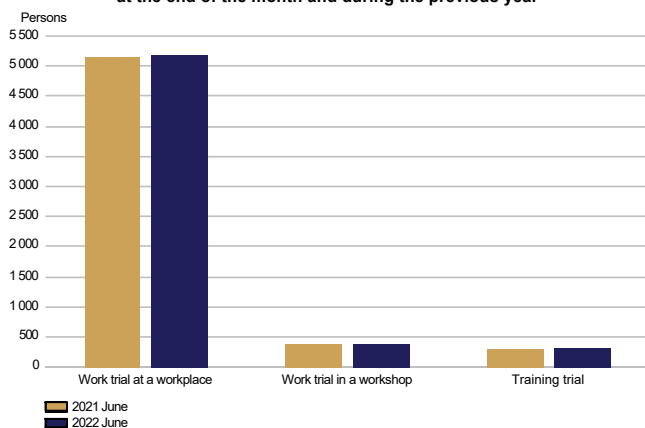
REHABILITATIVE WORK ACTIVITIES
at the end of the month and during the previous year



More participants in rehabilitative work activities than in the previous year

A total of 18,800 persons participated in rehabilitative work activities at the end of June, which is 400 more than a year earlier. Of the participants 10,800 were men and 8,000 were women. Compared to the situation a year ago, the number of men increased by 200 as did the number of women, too.

IN TRIALS
at the end of the month and during the previous year



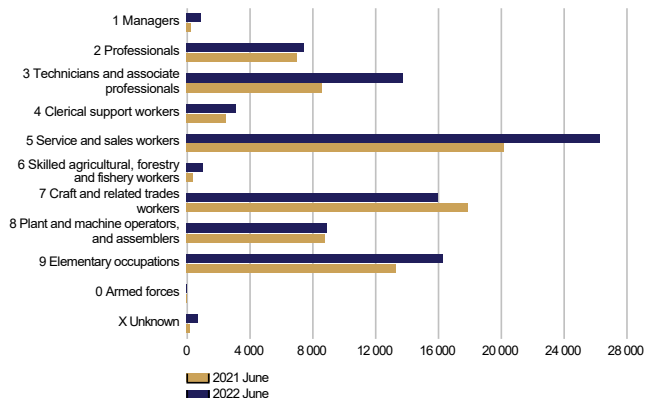
Participation in work and training trials increased

Work and training trials had a total of 5,900 participants at the end of June, which is 100 more than the previous year. Of the participants, 3,100 were men and 2,800 were women. Compared with the previous year, the numbers of men and women remained the same.



Jobs vacant

NEW JOB VACANCIES
during the month and during the previous year



Increase in the number of new vacancies from the year before

The number of new vacancies reported to Employment and Economic Development Offices and municipalities participating in the local government pilots on employment during June totalled 94,300, which is 15,300 more than in June last year. In all, the number of unfilled vacancies in June amounted to 189,700, which is 44,400 more than a year ago. A total of 14,200 of these vacancies were filled during June, 4,100 of them through Employment and Economic Development Offices. A total of 74,000 vacancies were closed for applications because the application period had ended or because there was a sufficient number of applicants. In addition, a total of 13,300 vacancies were cancelled and 3,000 vacancies could not be filled. The number of vacancies remaining unfilled at Employment and Economic Development Offices and in local government pilots at the end of June was 88,300, up 23,700 on the previous year.

The number of new vacancies had increased for nine occupational groups; the greatest increases were in the groups of service and sales workers (6,200), associated professionals and technicians (5,100) and elementary occupations (2,900). The number of new vacancies had decreased the most in the group of craft and related trades workers (-1,900).



Summary table

EMPLOYMENT SITUATION AT THE END OF 2022 JUNE (I) AND
ACTIVITIES OF EMPLOYMENT AND ECONOMIC DEVELOPMENT OFFICES DURING JUNE (II)
WHOLE COUNTRY

I EMPLOYMENT SITUATION AT THE END OF MONTH	Jun-22	Jun-21	CHANGE NUMBER	CHANGE %
A. JOBSEEKERS				
1. Unemployed jobseekers	259 789	316 212	-56 423	-17,8
of whom fully laid off	12 368	34 103	-21 735	-63,7
2. On reduced working week	5 695	13 121	-7 426	-56,6
3. Those who have work	159 211	214 675	-55 464	-25,8
of which in full-time work	122 157	193 400	-71 243	-36,8
of which in part-time work	14 910	0	14 910	0,0
of whom employed through employment services	22 144	21 275	869	4,1
4. Persons outside the labour force	88 503	97 770	-9 267	-9,5
of whom in services promoting employment	24 755	24 026	729	3,0
of whom in training	46 397	53 896	-7 499	-13,9
1-4 Total of jobseekers	513 198	641 778	-128 580	-20,0
B. LABOUR DEMAND				
1. Jobs vacant	88 253	64 520	23 733	36,8
of those notified for over a month	35 508	21 320	14 188	66,5
of those notified for over 2 months	23 295	13 666	9 629	70,5
C. PARTICIPATING IN SERVICES				
1. Employed by the State	579	565	14	2,5
2. Employed by municipalities	8 393	7 020	1 373	19,6
3. Employed by the private sector	23 475	20 701	2 774	13,4
1-3 Total number of employed people	32 447	28 286	4 161	14,7
4. Labour market training	16 380	18 681	-2 301	-12,3
5. Training	1 120	1 815	-695	-38,3
6. Engaged in work/training trials	5 885	5 826	59	1,0
7. As a job alternation substitute	4 133	3 625	508	14,0
8. Rehabilitative work	18 847	18 447	400	2,2
9. Self-motivated studies supported by unemployment benefit	24 636	27 270	-2 634	-9,7
1-9 Total number of people participating in services	103 448	103 950	-502	-0,5
D. STRUCTURE OF UNEMPLOYMENT				
1. Unemployed women	119 536	144 963	-25 427	-17,5
2. Unemployed men	140 253	171 249	-30 996	-18,1
3. Under 25 years old	29 815	40 447	-10 632	-26,3
4. Over 50 years old	95 203	111 614	-16 411	-14,7
5. Unemployed over a year	95 516	112 410	-16 894	-15,0
6. Foreign unemployed	33 492	37 650	-4 158	-11,0
E. UNEMPLOYMENT SECURITY				
1. Unemployed members of employees' unemployment funds	93 243	126 021	-32 778	-26,0
II EMPLOYMENT SITUATION DURING THE MONTH				
1. Unemployed jobseekers	282 177	344 823	-62 646	-18,2
2. Other jobseekers	254 518	324 613	-70 095	-21,6
1-2 Total number of jobseekers	536 695	669 436	-132 741	-19,8
3. Vacancies during a month	189 712	145 349	44 363	30,5
New vacancies during a month	94 310	79 012	15 298	19,4
Vacancies filled during a month	14 239	9 989	4 250	42,5
of those filled with job-seekers at the Employment Service	4 078	2 907	1 171	40,3
Vacancies application period ended or sufficient number of applicants	73 974	67 664	6 310	9,3
Vacancies cancelled or could not be filled	16 333	5 415	10 918	201,6
4. Started spell of unemployment	53 451	59 569	-6 118	-10,3
5. Completed spell of unemployment	26 188	35 866	-9 678	-27,0
6. New jobs found through employment services	3 315	3 366	-51	-1,5
7. New entrants to labour market training	1 484	1 703	-219	-12,9



Foreigners' summary table

FOREIGNERS' EMPLOYMENT SITUATION AT THE END OF 2022 JUNE (I) AND
ACTIVITIES OF EMPLOYMENT AND ECONOMIC DEVELOPMENT OFFICES DURING JUNE (II)
WHOLE COUNTRY

I EMPLOYMENT SITUATION AT THE END OF MONTH	Jun-22	Jun-21	CHANGE NUMBER	CHANGE %
A. JOBSEEKERS				
1. Unemployed jobseekers	33 492	37 650	-4 158	-11,0
of whom fully laid off	1 526	4 286	-2 760	-64,4
2. On reduced working week	370	901	-531	-58,9
3. Those who have work	18 533	21 319	-2 786	-13,1
of which in full-time work	15 203	19 621	-4 418	-22,5
of which in part-time work	1 479	0	1 479	0,0
of whom employed through employment services	1 851	1 698	153	9,0
4. Persons outside the labour force	24 388	25 339	-951	-3,8
of whom in services promoting employment	2 775	2 650	125	4,7
of whom in training	19 241	20 217	-976	-4,8
1-4 Total of jobseekers	76 783	85 209	-8 426	-9,9
C. PARTICIPATING IN SERVICES				
1. Employed by the State	8	8	0	0,0
2. Employed by municipalities	521	428	93	21,7
3. Employed by the private sector	1 873	1 619	254	15,7
1-3 Total number of employed people	2 402	2 055	347	16,9
4. Labour market training	7 856	8 564	-708	-8,3
5. Training	127	112	15	13,4
6. Engaged in work/training trials	1 483	1 464	19	1,3
7. As a job alternation substitute	71	57	14	24,6
8. Rehabilitative work	1 005	1 037	-32	-3,1
9. Self-motivated studies supported by unemployment benefit	9 661	10 451	-790	-7,6
1-9 Total number of people participating in services	22 605	23 740	-1 135	-4,8
D. STRUCTURE OF UNEMPLOYMENT				
1. Unemployed women	17 816	18 789	-973	-5,2
2. Unemployed men	15 676	18 861	-3 185	-16,9
3. Under 25 years old	2 408	2 950	-542	-18,4
4. Over 50 years old	8 439	9 297	-858	-9,2
5. Unemployed over a year	9 520	10 687	-1 167	-10,9
E. UNEMPLOYMENT SECURITY				
1. Unemployed members of employees' unemployment funds	5 495	7 632	-2 137	-28,0
II EMPLOYMENT SITUATION DURING THE MONTH				
1. Unemployed jobseekers	36 409	40 750	-4 341	-10,7
2. Other jobseekers	42 760	46 725	-3 965	-8,5
1-2 Total number of jobseekers	79 169	87 475	-8 306	-9,5
4. Started spell of unemployment	7 571	6 823	748	11,0
5. Completed spell of unemployment	3 262	3 666	-404	-11,0
6. New jobs found through employment services	268	244	24	9,8
7. New entrants to labour market training	766	878	-112	-12,8



Regional table

UNEMPLOYED JOBSEEKERS AND JOBS VACANT BY ELY CENTRE AT THE END OF 2022 JUNE
WHOLE COUNTRY

ELY centre	Workforce		Unemployed jobseekers						Disabled		Jobs vacant
		% of workforce	Total	Men	Women	Under 20 years old	Under 25 years old	Over 50 years old	Unemployed over a year	and chron. ill	
Uusimaa	882 835	9,9	87 444	45 979	41 465	1 565	8 235	30 898	37 451	7 881	23 620
Southwest Finland	229 281	9,5	21 774	11 613	10 161	567	2 566	7 512	7 604	2 566	8 011
Satakunta	96 399	9,2	8 825	4 890	3 935	261	1 027	3 601	2 840	1 184	2 582
Häme	171 145	10,9	18 626	10 333	8 293	475	2 052	7 716	8 267	3 109	6 460
Pirkanmaa	250 112	9,0	22 619	11 791	10 828	620	2 734	7 596	7 051	2 514	9 406
Southeast Finland	128 257	11,2	14 337	7 907	6 430	445	1 593	6 133	4 102	1 791	2 700
South Savo	56 237	9,8	5 489	3 193	2 296	161	612	2 400	1 763	1 113	1 997
North Savo	112 235	9,6	10 811	6 231	4 580	297	1 448	4 143	4 367	1 648	4 081
North Karelia	71 466	13,3	9 504	5 338	4 166	296	1 182	3 960	3 414	1 293	1 926
Central Finland	124 371	12,2	15 184	8 433	6 751	556	2 304	5 183	5 437	1 598	3 669
South Ostrobothnia	85 739	6,5	5 574	3 017	2 557	184	813	2 090	1 268	1 025	3 459
Ostrobothnia	112 620	6,6	7 456	3 845	3 611	224	854	2 635	1 988	1 041	4 824
North Ostrobothnia	189 174	10,4	19 709	10 428	9 281	801	3 061	6 141	6 534	2 341	5 745
Kainuu	30 908	9,0	2 778	1 633	1 145	96	337	1 280	655	523	1 210
Lapland	80 384	11,0	8 856	5 184	3 672	218	932	3 649	2 517	1 130	5 240
Åland	15 093	3,9	593	309	284	13	57	200	174	33	271
Abroad	0	0,0	208	128	80	0	7	66	82	7	3 052
Total	2 636 256	9,9	259 789	140 253	119 536	6 780	29 815	95 203	95 516	30 797	88 253



Information about the website

On this website you will find the latest statistics from the Ministry of Economic Affairs and Employment's monthly Employment Bulletin. You can access a .pdf version of the current and previous months' Employment Bulletin by following the link on the right. The Employment Bulletin is based on the data from the MEAE's Employment Service Statistics. The Ministry of Economic Affairs and Employment compiles statistics on the clients of the Employment and economic development offices (TE offices), including registered job-seekers, labour market policy services, and job vacancies reported to TE offices by employers. The data is collected from the customer service registry (URA) used by the TE offices. This means that the data used by MEAE Employment Service Statistics is completely registry-based. The statistical data covers all persons, services, and open vacancies in the aforementioned groups, as separately defined in the registry by the classifications and variables for the statistical period in question.

Owing to seasonal variations, the Employment Bulletin always includes a comparison with the corresponding month in the previous year. The descriptors used in the Bulletin are also available in a table format. The Employment Bulletins are published at the end of the subsequent calendar month. The official date of publication is announced in advance.

The following symbols have been used:

. Category not applicable

... Data subject to secrecy

Links:

- **Employment Service Statistics online:**
<https://www.tem.fi/en/employment-bulletin-and-employment-service-statistics>
- **Employment Service Statistics, Description and Quality Description**
<https://www.tem.fi/en/release-dates-of-statistics-and-description-and-quality-description>
- **You can access key information from MEAE's Employment Service Statistics by visiting the Statistics Finland's StatFin database:**
<https://statfin.stat.fi/PxWeb/pxweb/en/StatFin/>
- **The Employment Service Statistics data is also available from the MEAE Publications page (only available in Finnish).**
<https://www.tem.fi/tyopoliittinen-aikakauskirja>
- **Comparison between the statistics of Statistics Finland and the Ministry of Economic Affairs and Employment**
https://www.stat.fi/til/tyti/tyti_2019-09-13_men_001_en.html
- **Comparison between the Job Vacancy Survey of Statistics Finland and Employment Service Statistics of the Ministry of Economic Affairs and Employment**
https://tilastokeskus.fi/til/atp/atp_2017-01-02_men_001.html
- **Local government pilots on employment (In Finnish):**
<https://app.powerbi.com/view?r=eyJrIjoiaZGVhNWw2ZWU0MmVlZmE5NmZiYjRiODI0IiwidCI6ImQ5NTk1MWE2LWw2ZDZDNmNGE3NC05YVJiLWYyYjJjYjg5ZDY3MSIsImMiOiJh9>

Instructions for referencing:

Official Statistics of Finland (OSF): Ministry of Economic Affairs and Employment / Employment Service Statistics. ISSN 1797-3694 202Y:MM, Employment Bulletin, MONTH 202Y. Helsinki: Ministry of Economic Affairs and Employment (date of reference). Available at:
<https://www.temtyollisyyskatsaus.fi>



Contact information

Ministry of Economic Affairs and Employment

Employment and Well-Functioning Markets Department

Kaisa-Mari Kuusela, +358 29 504 8294

Petri Syvänen, +358 29 504 8050

Suvi Timonen, +358 29 504 7288

E-mail: [firstname.lastname\(at\)gov.fi](mailto:firstname.lastname(at)gov.fi) /
[temtyonvalitystilasto\(at\)gov.fi](mailto:temtyonvalitystilasto(at)gov.fi)

<https://www.temtyollisyyskatsaus.fi>

ISSN: 1797-3694 (online publication)

