



# Employment Bulletin

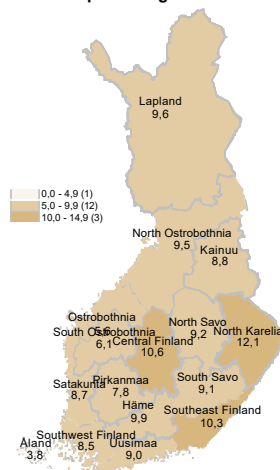
November 2022



Ministry of Economic Affairs  
and Employment of Finland

## 234,800 unemployed jobseekers in November

Unemployed jobseekers' percentage of the workforce by ELY centre



At the end of November, a total of 234,800 unemployed jobseekers were registered at the Employment and Economic Development Offices and municipalities participating in the local government pilots on employment. This is 17,900 fewer than a year earlier, and 2,500 more than the previous month. Unemployed jobseekers accounted for 8.9% of the labour force, which is 0.7 percentage points less than the year before. The figures are from the Employment Service Statistics of the Ministry of Economic Affairs and Employment.

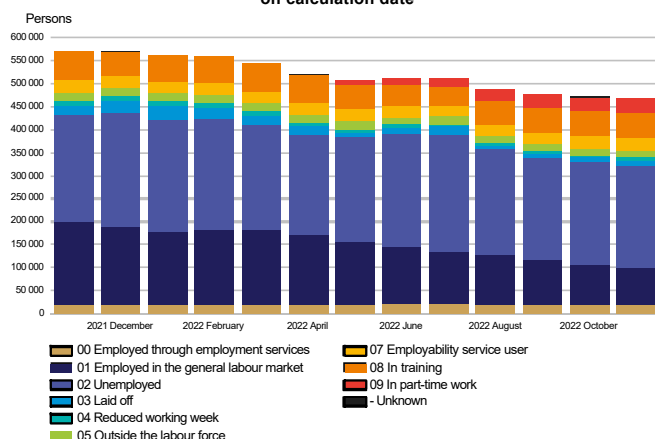
### Trends:

- Total number of all jobseekers decreased by 99,300
- The number of unemployed jobseekers decreased by 17,900 from the previous year
- The number of people fully laid off decreased by 4,800
- Services included in the activation rate had 2,700 more people than a year ago
- The number of new job vacancies decreased by 20,000 from last year



## All jobseekers

Jobseekers by group  
on calculation date



### The total number of jobseekers decreased

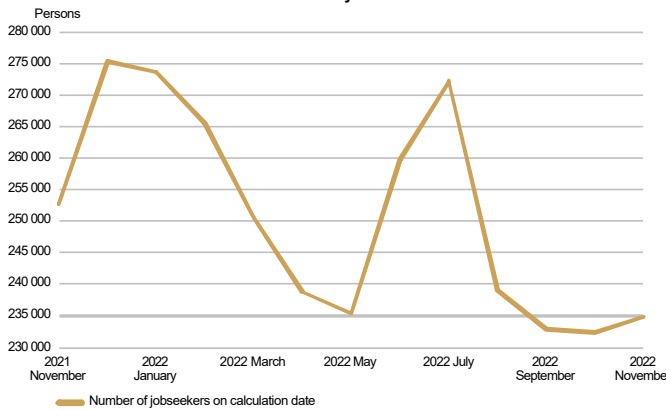
At the end of November, the number of jobseekers registered at the Employment and Economic Development Offices and municipalities participating in the local government pilots on employment totalled 469,600, down 99,300 on the previous year. Of the jobseekers, 239,800 were men and 229,800 were women. Compared to the situation a year ago, the number of men decreased by 48,800 and the number of women by 50,500. Of the jobseekers, 227,900, or 2,300 less than a year earlier, were customers of municipalities participating in the local government pilots on employment.

Of the jobseekers, 132,900 were employed: 78,100 of them were in full-time work, 33,800 were in part-time work and 21,100 were employed through the services organised by the employment and economic development administration and local government pilots on employment. The number of jobseekers outside the labour force was 96,000, of whom 26,900 were in services promoting employment and 54,300 in training. Of the jobseekers, 234,800 were unemployed jobseekers, which is 17,900 less than the year before. In November, 13,900 of unemployed jobseekers were fully laid off, which is 3,000 more than in October. The number of people fully laid off decreased by 4,800 from November a year earlier. Furthermore, jobseekers on a reduced working week numbered 5,800, representing a decrease of 3,300 from the year before.



## Unemployed jobseekers

**UNEMPLOYED JOBSEEKERS**  
monthly

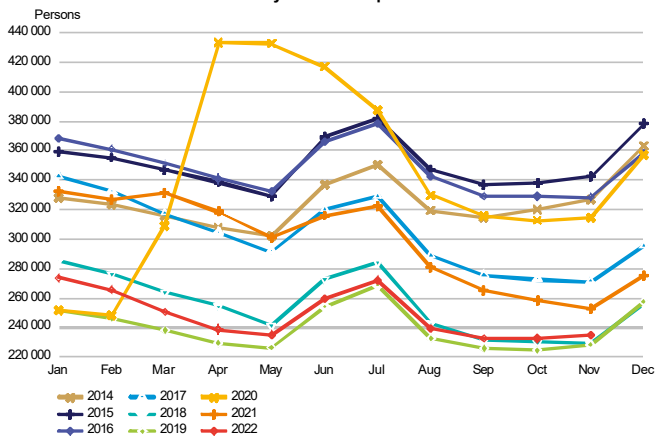


### Decrease in unemployed jobseekers in November

At the end of November, the number of unemployed jobseekers registered at the Employment and Economic Development Offices and municipalities participating in the local government pilots on employment totalled 234,800, down 17,900 on the previous year. Compared with October, the number of unemployed jobseekers increased by 2,500. Of the unemployed jobseekers, 129,300, or 5,700 fewer than in November a year ago, were customers of municipalities participating in the local government pilots on employment. The number of new job searches among unemployed jobseekers totalled 13,700, up 2,200 from November a year ago. In November, the number of starting periods of unemployment totalled 33,500, representing an increase of 1,100 on the year before. The number of starting periods of unemployment decreased by 2,400 from October. The number of starting periods is always greater than the number of job searches because new unemployment periods are also registered from the existing groups of jobseekers.

The number of foreign citizens among unemployed jobseekers totalled 32,400, up 3,400 from November a year ago. Of these foreign unemployed jobseekers, EU/EEA citizens accounted for 8,300 at the end of November, down 700 from the year before.

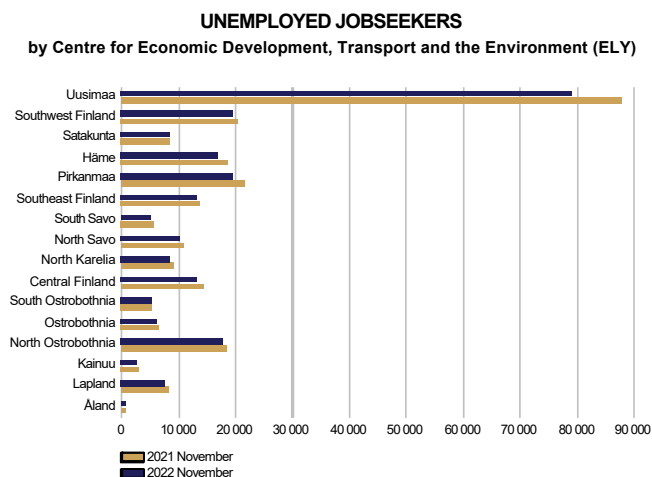
**UNEMPLOYED JOBSEEKERS**  
month by month comparison



In November, 13,900 of unemployed jobseekers were fully laid off, which is 3,000 more than in October. The number of people fully laid off decreased by 4,800 from November a year earlier. In November, the number of job searches among the fully laid off people totalled 2,600, representing an increase of 500 on the year before. The number of starting periods of full lay-offs was 6,800, up 1,500 from November a year ago. The number of starting periods of full lay-offs increased by 500 from October. The number of people fully laid off decreased in almost all occupational groups. The greatest decreases were in the groups of service and sales workers (-2,400), craft and related trades workers (-600), associate professionals and technicians (-500) and office and customer service workers (-400). The number of laid-off people remained unchanged in the groups of skilled agricultural, forestry and fishery workers; plant and machine operators, and assemblers; and armed forces.



## Unemployed jobseekers by region



### Unemployment decreased in the areas of all ELY Centres

Compared to the same period in the previous year, the number of unemployed jobseekers decreased in November in the areas of all Centres for Economic Development, Transport and the Environment (ELY Centres); the most in Uusimaa (-10%), Häme (-9%), Pirkanmaa (-9%), South Savo (-8%), Kainuu (-8%) and Lapland (-8%). The number of unemployed jobseekers decreased the least in North Ostrobothnia (-2%), Ostrobothnia (-2%) and Satakunta (-2%). The number of unemployed jobseekers fell the most in Åland, by 22%. Compared with October, the number of unemployed jobseekers increased in almost all areas of ELY Centres; the most in Kainuu (4%), North Savo (3%), Ostrobothnia (3%) and South Ostrobothnia (3%). The number of unemployed jobseekers decreased in Lapland (-2%) and remained unchanged in Pirkanmaa. In Åland, the number of unemployed jobseekers fell by 1% from October.

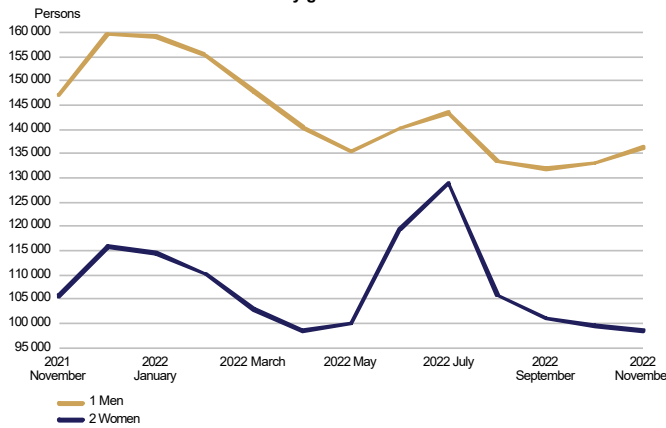
### Unemployed jobseekers and jobs vacant in Employment and Economic Development Office by ELY centre

ELY centre	Unemployed jobseekers		Change		Of the Unemployed jobseekers' percentage fully laid off		Jobs vacant		Change			
	Nov 2022	Oct 2022	Nov 2021	Nov 2022	Nov 2021	Nov 2022	Nov 2021	Nov 2022	Nov 2021	Nov 2022		
Uusimaa	79 149	78 680	87 863	-8 714	-10	3 677	9,0	19 630	23 772	22 752	-3 122	-14
Southwest Finland	19 569	19 468	20 454	-885	-4	1 505	8,5	5 290	6 766	7 149	-1 859	-26
Satakunta	8 381	8 270	8 570	-189	-2	609	8,7	1 470	1 944	1 889	-419	-22
Häme	16 977	16 842	18 617	-1 640	-9	1 031	9,9	3 170	4 445	5 702	-2 532	-44
Pirkanmaa	19 618	19 523	21 473	-1 855	-9	1 001	7,8	6 105	8 314	8 707	-2 602	-30
Southeast Finland	13 156	12 982	13 862	-706	-5	658	10,3	1 531	2 517	2 568	-1 037	-40
South Savo	5 117	5 030	5 563	-446	-8	255	9,1	944	1 618	1 771	-827	-47
North Savo	10 377	10 029	10 719	-342	-3	796	9,2	2 498	3 673	3 865	-1 367	-35
North Karelia	8 645	8 456	9 032	-387	-4	563	12,1	1 278	1 720	1 307	-29	-2
Central Finland	13 147	12 973	14 187	-1 040	-7	664	10,6	1 959	3 050	2 976	-1 017	-34
South Ostrobothnia	5 226	5 098	5 378	-152	-3	518	6,1	1 923	2 650	3 026	-1 103	-36
Ostrobothnia	6 333	6 174	6 465	-132	-2	552	5,6	1 952	2 533	2 413	-461	-19
North Ostrobothnia	17 921	17 528	18 245	-324	-2	1 177	9,5	3 774	4 884	5 676	-1 902	-34
Kainuu	2 710	2 607	2 944	-234	-8	218	8,8	625	1 016	1 089	-464	-43
Lapland	7 720	7 915	8 350	-630	-8	559	9,6	3 042	4 763	3 814	-772	-20
Åland	578	586	745	-167	-22	31	3,8	218	238	329	-111	-34
Abroad	211	205	252	-41	-16	42	.	2 906	3 285	2 099	807	38
WHOLE COUNTRY	234 837	232 368	252 721	-17 884	-7	13 856	8,9	58 315	77 188	77 132	-18 817	-24



## Unemployed jobseekers by gender and age-group

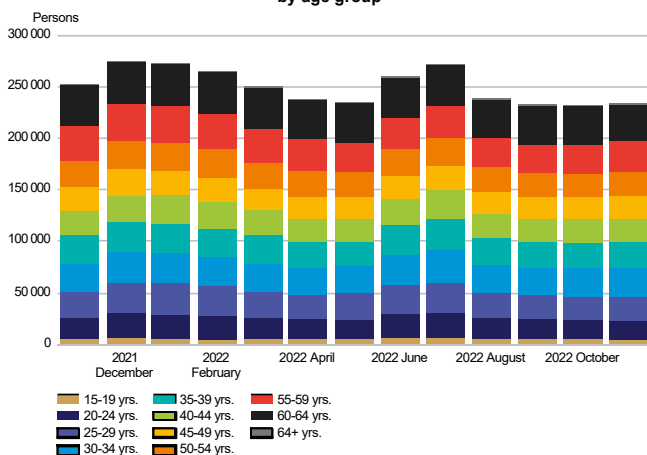
**UNEMPLOYED JOBSEEKERS  
by gender**



### Unemployment decreased by an equal percentage among men and women

Of the unemployed jobseekers, 136,300 (58%) were men and 98,500 (42%) were women, indicating an increase of 3,300 for men and a decrease of 800 for women from the figures for October. Compared with November a year ago, unemployment decreased by 10,800 (-7%) among men and by 7,100 (-7%) among women.

**UNEMPLOYED JOBSEEKERS  
by age group**



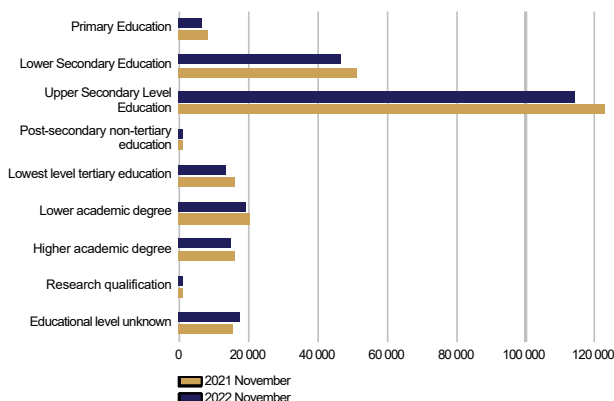
### Examined by age group, unemployment decreased for those under the age of 65

At the end of November, unemployed jobseekers under 25 years of age numbered 23,200, representing a decrease of 3,300 from November a year ago. Youth unemployment decreased from October by 300. There were 4,400 unemployed persons under 20. Among those over 50, the number of unemployed was 90,300, representing a decrease of 9,500 on the year before. Among those over 55, the number of unemployed was 66,900, representing a decrease of 6,400 on the year before. Unemployment decreased the most among those under 25 (-12%) and among those between 50 and 59 years of age (-11%). Unemployment decreased the least among 30 to 34-year-olds (-1%). Among those over 64, unemployment increased by 4%. Compared with October, unemployment also rose among those aged 25-59 (2%).



## Unemployed jobseekers by levels of education and occupational group

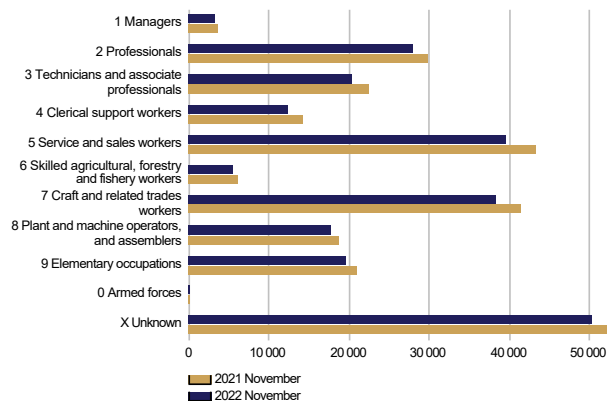
**UNEMPLOYED JOBSEEKERS  
by level of education**



### Unemployment decreased at eight levels of education

Examined by level of education, unemployment decreased from November last year at all levels of education, with the exception of those with level of education 'unknown' whose unemployment increased by 11%. Unemployment decreased the most among those with lower level basic qualifications (-22%), lowest level of tertiary education (-13%) and post-secondary non-tertiary education (-11%). Unemployment decreased the least among those with lower-degree level tertiary education (-5%) and higher-degree level tertiary education (-6%).

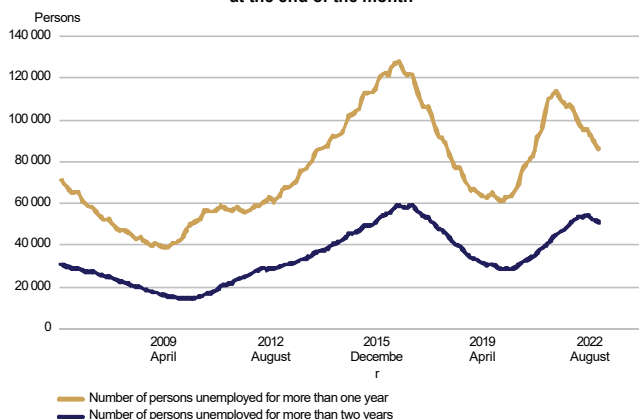
**UNEMPLOYED JOBSEEKERS  
by occupational group**



### Unemployment decreased in all occupational groups

Examined by occupation, unemployment decreased in all groups from November last year; the most in the groups of service and sales workers (-3,700), craft and related trades workers (-3,100), technicians and associate professionals (-2,200) 'unknown' (-1,900), office and customer service workers (-1,900) and professionals (-1,800). Unemployment decreased the least in the occupational groups of armed forces (-20), managers (-400) and skilled agricultural, forestry and fishery workers (-600).

**LONG-TERM UNEMPLOYED  
at the end of the month**

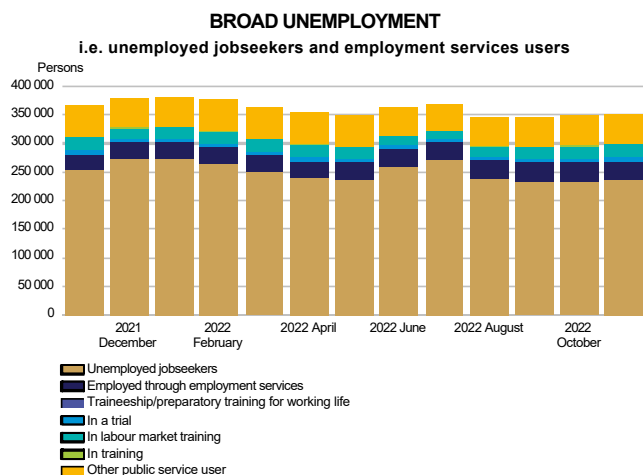


### Decrease in long-term unemployment

At the end of November, the number of long-term unemployed who had been unemployed without interruption for more than a year amounted to 86,100, down 20,100 on the previous year. Of the long-term unemployed, 52,200 were men and 33,800 were women. The number of men decreased by 11,400 (-18%) from the previous year and the number of women by 8,800 (-21%). Of those unemployed in the long term, 50,900 had been unemployed without interruption for more than two years. This is 2,600 more than a year ago.



## Services

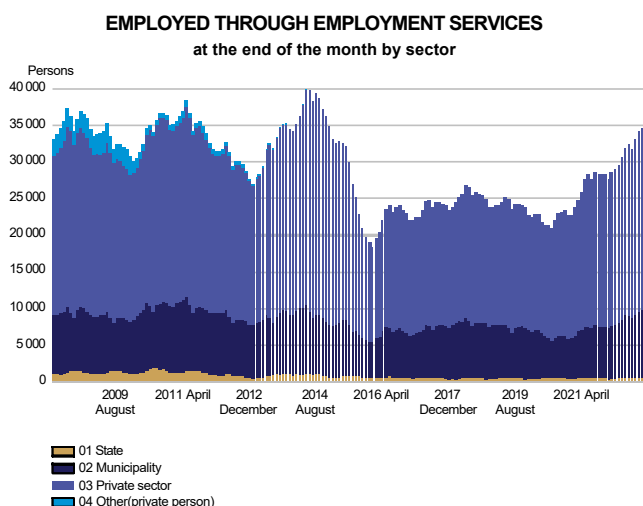


### Increase in the number of persons covered by services

At the end of November, the number of persons covered by services included in the activation rate amounted to 117,600, up 2,700 on the previous year. Compared with October, the number of persons covered by such services increased by 1,400. Of those covered by services, 66,400 were customers of the local government pilots, which is 4,200 more than in November last year. The activation rate at the end of November was 33.4%, which is 2.1 percentage points higher than a year earlier. In all, 4.2% of the labour force were covered by these services.

Of those covered by services, the number of men was 56,000, up 1,500 on the previous year. The number of women covered by these services was 61,700, up 1,200 on the previous year.

Broad unemployment, or the total number of unemployed jobseekers and those covered by services, was 352,500 at the end of November. This is 15,200 less than a year earlier. The decrease in broad unemployment was due to a decrease in the number of unemployed.



### The number of placements increased in all sectors

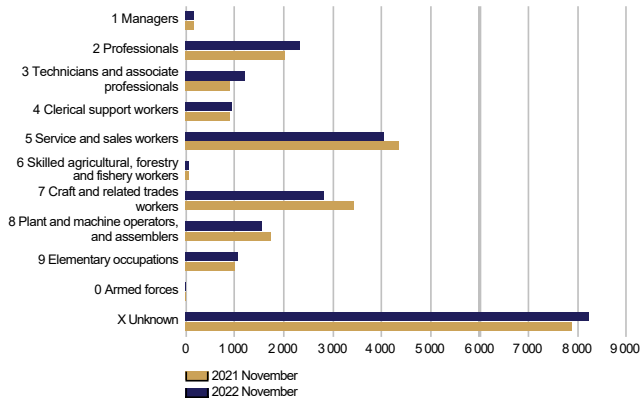
At the end of November, the number of persons claiming pay subsidies, placed in employment in central government or receiving start-up grants totalled 34,700, which is 6,200 more than the year before. Of those in placements, 2% were in central government jobs, 26% in local government jobs and 72% in the private sector. Since November last year, the number of placements has increased by 27% in local government, by 20% in the private sector and by 17% in central government. Of those in placements, 52% were men. Placements for men increased by 3,400, and those for women by 2,800 from the previous year.





## Labour market training, training and self-motivated studies

**PERSONS IN LABOUR MARKET TRAINING**  
in target profession at the end of the month

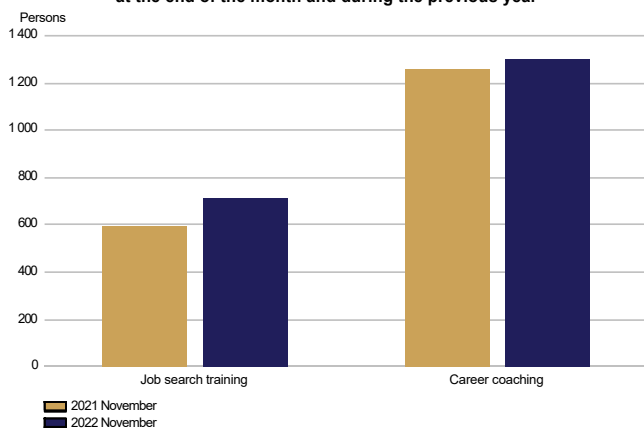


### Number of persons in labour market training remained unchanged

At the end of November, labour market training was attended by 22,400 students, which is unchanged from the previous year. Of the students, 10,200 were men and 12,100 were women. The number of men decreased by 300, and the number of women rose by 300 from November last year. During November, 4,300 new students began labour market training, representing an increase of 800 on the year before.

Based on target occupation, the largest subgroup within the category of 'unknown' were people in integration training (7,500), which is 500 more than the year before.

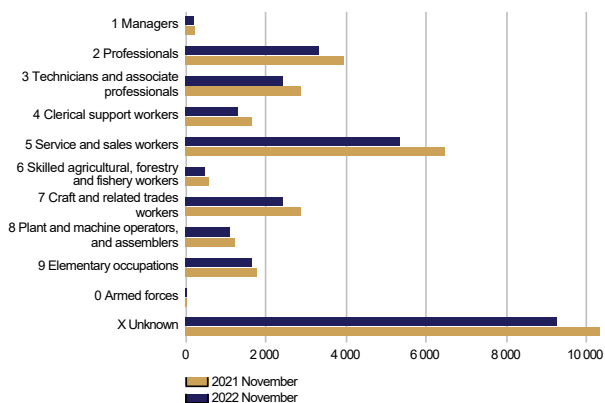
**IN TRAINING**  
at the end of the month and during the previous year



### The number of persons in training increased

At the end of November, 2,000 persons were in training, which is 200 more than the year before. Of those in training, 1,000 were men and 1,000 were women. Career coaching was provided to 1,300 participants, which is unchanged from last year. The number of people receiving job search training was 700, which is 100 more than last year.

**IN SELF-MOTIVATED STUDIES**  
in person's profession at the end of the month



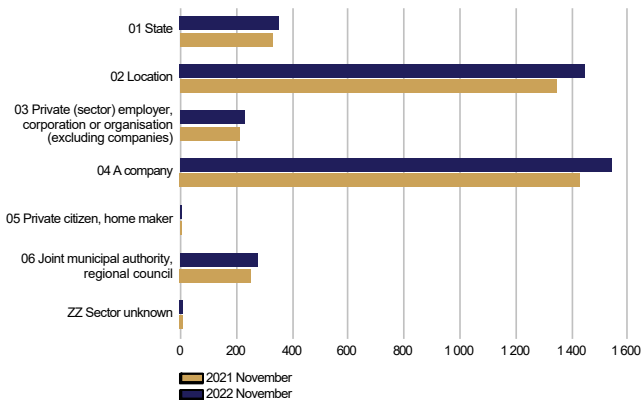
### The number of people in self-motivated study decreased from the previous year

Self-motivated studies supported by unemployment benefits were attended by a total of 27,500 people, representing a decrease of 4,500 on the year before. The number of men receiving unemployment benefits for studies was 10,400, down 2,100 on the previous year. Among women, the number was 17,000, representing a decrease of 2,400 on the year before. Occupation was undetermined in case of 8,400 persons in the group of 'unknown', down 800 on the previous year.



## Job alternation, rehabilitative work and trials

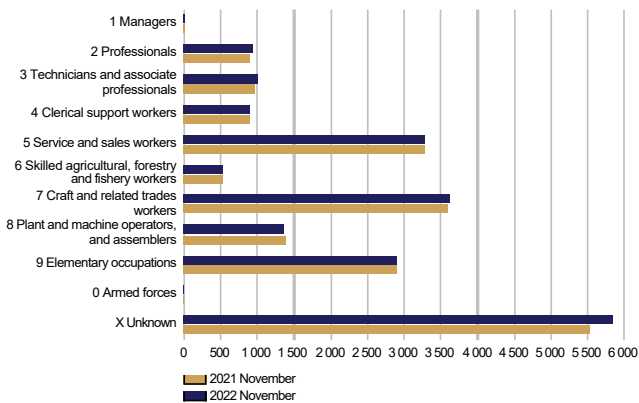
**AS A JOB ALTERNATION SUBSTITUTE**  
at the end of the month and during the previous year by sector



### The number of job alternation substitutes increased

A total of 3,900 persons were job alternation substitutes at the end of November, which is 300 more than a year earlier. Of the substitutes, 1,400 were men and 2,500 were women. The number of men increased by 100 and the number of women by 200 from the previous year.

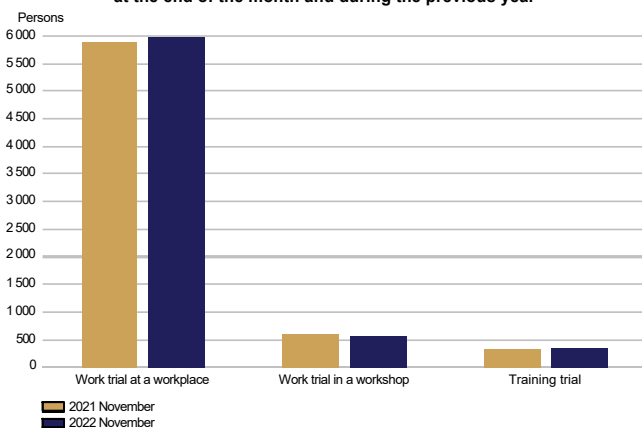
**REHABILITATIVE WORK ACTIVITIES**  
at the end of the month and during the previous year



### More participants in rehabilitative work activities than in the previous year

A total of 20,400 persons participated in rehabilitative work activities at the end of November, which is 400 more than a year earlier. Of the participants 11,400 were men and 9,000 were women. Compared to the situation a year ago, the number of men increased by 200 as did the number of women, too.

**IN TRIALS**  
at the end of the month and during the previous year



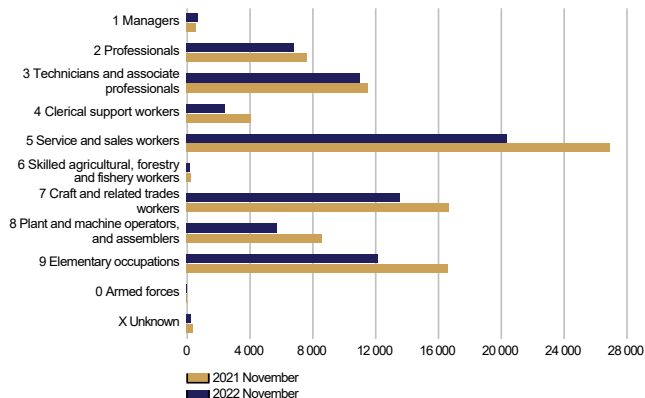
### Participation in work and training trials increased

Work and training trials had a total of 6,900 participants at the end of November, which is 100 more than the year before. Of the participants 3,300 were men and 3,600 were women. Compared with the previous year, the number of men and women remained unchanged.



## Jobs vacant

**NEW JOB VACANCIES**  
during the month and during the previous year



### Decrease in the number of new vacancies

The number of new vacancies reported to Employment and Economic Development Offices and municipalities participating in the local government pilots on employment during November totalled 73,100, which is 20,000 less than in November last year. In all, the number of unfilled vacancies in November was 135,600, which is 32,600 less than a year ago. A total of 10,500 of these vacancies were filled during November, 2,200 of them through Employment and Economic Development Offices. A total of 54,900 vacancies were closed for applications because the application period had ended or because there was a sufficient number of applicants. In addition, a total of 12,300 vacancies were cancelled and 1,500 vacancies could not be filled. The number of vacancies remaining unfilled at Employment and Economic Development Offices and in local government pilots at the end of November was 58,300, down 18,800 on the previous year.

The number of new vacancies decreased in all occupational groups, with the exception of managers (200). New vacancies fell the most in the groups of service and sales workers (-6,600), elementary occupations (-4,400), craft and related trades workers (-3,200) and plant and machine operators, and assemblers (-2,800).



### Summary table

EMPLOYMENT SITUATION AT THE END OF 2022 NOVEMBER (I) AND  
ACTIVITIES OF EMPLOYMENT AND ECONOMIC DEVELOPMENT OFFICES DURING NOVEMBER (II)  
WHOLE COUNTRY

I EMPLOYMENT SITUATION AT THE END OF MONTH	Nov-22	Nov-21	CHANGE NUMBER	CHANGE %
<b>A. JOBSEEKERS</b>				
1. Unemployed jobseekers	234 837	252 721	-17 884	-7,1
of whom fully laid off	13 856	18 634	-4 778	-25,6
2. On reduced working week	5 841	9 183	-3 342	-36,4
3. Those who have work	132 929	199 672	-66 743	-33,4
of which in full-time work	78 098	177 843	-99 745	-56,1
of which in part-time work	33 751	0	33 751	0,0
of whom employed through employment services	21 080	21 829	-749	-3,4
4. Persons outside the labour force	96 012	107 347	-11 335	-10,6
of whom in services promoting employment	26 899	26 434	465	1,8
of whom in training	54 259	61 751	-7 492	-12,1
<b>1-4 Total of jobseekers</b>	<b>469 619</b>	<b>568 923</b>	<b>-99 304</b>	<b>-17,5</b>
<b>B. LABOUR DEMAND</b>				
1. Jobs vacant	58 315	77 132	-18 817	-24,4
of those notified for over a month	17 263	27 561	-10 298	-37,4
of those notified for over 2 months	8 508	17 300	-8 792	-50,8
<b>C. PARTICIPATING IN SERVICES</b>				
1. Employed by the State	536	457	79	17,3
2. Employed by municipalities	9 053	7 109	1 944	27,3
3. Employed by the private sector	25 076	20 899	4 177	20,0
<b>1-3 Total number of employed people</b>	<b>34 665</b>	<b>28 465</b>	<b>6 200</b>	<b>21,8</b>
4. Labour market training	22 385	22 346	39	0,2
5. Training	2 014	1 853	161	8,7
6. Engaged in work/training trials	6 880	6 798	82	1,2
7. As a job alternation substitute	3 856	3 580	276	7,7
8. Rehabilitative work	20 380	19 997	383	1,9
9. Self-motivated studies supported by unemployment benefit	27 454	31 931	-4 477	-14,0
<b>1-9 Total number of people participating in services</b>	<b>117 634</b>	<b>114 970</b>	<b>2 664</b>	<b>2,3</b>
<b>D. STRUCTURE OF UNEMPLOYMENT</b>				
1. Unemployed women	98 530	105 617	-7 087	-6,7
2. Unemployed men	136 307	147 104	-10 797	-7,3
3. Under 25 years old	23 232	26 529	-3 297	-12,4
4. Over 50 years old	90 269	99 769	-9 500	-9,5
5. Unemployed over a year	86 078	106 203	-20 125	-18,9
6. Foreign unemployed	32 369	28 988	3 381	11,7
<b>E. UNEMPLOYMENT SECURITY</b>				
1. Unemployed members of employees' unemployment funds	81 797	95 399	-13 602	-14,3
<b>II EMPLOYMENT SITUATION DURING THE MONTH</b>				
1. Unemployed jobseekers	258 429	278 387	-19 958	-7,2
2. Other jobseekers	234 567	315 475	-80 908	-25,6
<b>1-2 Total number of jobseekers</b>	<b>492 996</b>	<b>593 862</b>	<b>-100 866</b>	<b>-17,0</b>
3. Vacancies during a month	135 567	168 130	-32 563	-19,4
New vacancies during a month	73 057	93 085	-20 028	-21,5
Vacancies filled during a month	10 461	12 139	-1 678	-13,8
of those filled with job-seekers at the Employment Service	2 240	2 993	-753	-25,2
Vacancies application period ended or sufficient number of applicants	54 904	74 906	-20 002	-26,7
Vacancies cancelled or could not be filled	13 782	7 751	6 031	77,8
4. Started spell of unemployment	33 512	32 377	1 135	3,5
5. Completed spell of unemployment	28 940	32 302	-3 362	-10,4
6. New jobs found through employment services	2 364	3 171	-807	-25,4
7. New entrants to labour market training	4 319	5 116	-797	-15,6



## Foreigners' summary table

FOREIGNERS' EMPLOYMENT SITUATION AT THE END OF 2022 NOVEMBER (I) AND  
ACTIVITIES OF EMPLOYMENT AND ECONOMIC DEVELOPMENT OFFICES DURING NOVEMBER (II)  
WHOLE COUNTRY

I EMPLOYMENT SITUATION AT THE END OF MONTH	Nov-22	Nov-21	CHANGE NUMBER	CHANGE %
<b>A. JOBSEEKERS</b>				
1. Unemployed jobseekers	32 369	28 988	3 381	11,7
of whom fully laid off	1 950	2 598	-648	-24,9
2. On reduced working week	347	600	-253	-42,2
3. Those who have work	17 206	21 047	-3 841	-18,2
of which in full-time work	11 762	19 187	-7 425	-38,7
of which in part-time work	3 450	0	3 450	0,0
of whom employed through employment services	1 994	1 860	134	7,2
4. Persons outside the labour force	30 342	29 992	350	1,2
of whom in services promoting employment	2 976	2 820	156	5,5
of whom in training	25 279	24 817	462	1,9
<b>1-4 Total of jobseekers</b>	<b>80 264</b>	<b>80 627</b>	<b>-363</b>	<b>-0,5</b>
<b>C. PARTICIPATING IN SERVICES</b>				
1. Employed by the State	13	6	7	116,7
2. Employed by municipalities	623	476	147	30,9
3. Employed by the private sector	2 175	1 667	508	30,5
<b>1-3 Total number of employed people</b>	<b>2 811</b>	<b>2 149</b>	<b>662</b>	<b>30,8</b>
4. Labour market training	10 892	9 584	1 308	13,6
5. Training	189	177	12	6,8
6. Engaged in work/training trials	1 496	1 430	66	4,6
7. As a job alternation substitute	69	61	8	13,1
8. Rehabilitative work	1 288	1 246	42	3,4
9. Self-motivated studies supported by unemployment benefit	12 639	13 734	-1 095	-8,0
<b>1-9 Total number of people participating in services</b>	<b>29 384</b>	<b>28 381</b>	<b>1 003</b>	<b>3,5</b>
<b>D. STRUCTURE OF UNEMPLOYMENT</b>				
1. Unemployed women	16 371	14 094	2 277	16,2
2. Unemployed men	15 998	14 894	1 104	7,4
3. Under 25 years old	2 235	1 786	449	25,1
4. Over 50 years old	8 311	8 027	284	3,5
5. Unemployed over a year	8 608	10 352	-1 744	-16,8
<b>E. UNEMPLOYMENT SECURITY</b>				
1. Unemployed members of employees' unemployment funds	5 467	5 898	-431	-7,3
<b>II EMPLOYMENT SITUATION DURING THE MONTH</b>				
1. Unemployed jobseekers	36 248	32 729	3 519	10,8
2. Other jobseekers	47 059	50 607	-3 548	-7,0
<b>1-2 Total number of jobseekers</b>	<b>83 307</b>	<b>83 336</b>	<b>-29</b>	<b>0,0</b>
4. Started spell of unemployment	5 428	3 980	1 448	36,4
5. Completed spell of unemployment	4 306	4 266	40	0,9
6. New jobs found through employment services	265	250	15	6,0
7. New entrants to labour market training	1 907	1 986	-79	-4,0



## Regional table

UNEMPLOYED JOBSEEKERS AND JOBS VACANT BY ELY CENTRE AT THE END OF 2022 NOVEMBER  
WHOLE COUNTRY

ELY centre	Workforce	Unemployed jobseekers						Unemployed over a year	Disabled and chron. ill	Jobs vacant	
		% of workforce	Total	Men	Women	Under 20 years old	Under 25 years old				Over 50 years old
Uusimaa	882 835	9,0	79 149	43 680	35 469	1 025	6 286	28 829	33 776	7 359	19 630
Southwest Finland	229 281	8,5	19 569	11 423	8 146	344	1 903	7 238	6 791	2 388	5 290
Satakunta	96 399	8,7	8 381	4 980	3 401	205	882	3 502	2 549	1 154	1 470
Häme	171 145	9,9	16 977	9 969	7 008	328	1 628	7 426	7 500	3 073	3 170
Pirkanmaa	250 112	7,8	19 618	11 059	8 559	382	2 040	7 067	5 991	2 469	6 105
Southeast Finland	128 257	10,3	13 156	7 744	5 412	278	1 338	5 773	3 781	1 742	1 531
South Savo	56 237	9,1	5 117	3 151	1 966	103	521	2 310	1 635	1 065	944
North Savo	112 235	9,2	10 377	6 444	3 933	229	1 233	4 149	4 014	1 563	2 498
North Karelia	71 466	12,1	8 645	5 325	3 320	160	873	3 777	3 217	1 260	1 278
Central Finland	124 371	10,6	13 147	7 829	5 318	349	1 637	4 748	4 751	1 467	1 959
South Ostrobothnia	85 739	6,1	5 226	3 110	2 116	142	663	2 044	1 169	945	1 923
Ostrobothnia	112 620	5,6	6 333	3 778	2 555	160	702	2 425	1 864	926	1 952
North Ostrobothnia	189 174	9,5	17 921	10 680	7 241	500	2 498	5 950	5 971	2 310	3 774
Kainuu	30 908	8,8	2 710	1 754	956	50	257	1 304	578	494	625
Lapland	80 384	9,6	7 720	4 894	2 826	160	692	3 467	2 237	1 072	3 042
Åland	15 093	3,8	578	350	228	...	67	205	177	39	218
Abroad	0	0,0	211	136	75	...	11	55	75	11	2 906
<b>Total</b>	<b>2 636 256</b>	<b>8,9</b>	<b>234 837</b>	<b>136 307</b>	<b>98 530</b>	<b>4 430</b>	<b>23 232</b>	<b>90 269</b>	<b>86 078</b>	<b>29 337</b>	<b>58 315</b>



## Information about the website

On this website you will find the latest statistics from the Ministry of Economic Affairs and Employment's monthly Employment Bulletin. You can access a .pdf version of the current and previous months' Employment Bulletin by following the link on the right. The Employment Bulletin is based on the data from the MEAE's Employment Service Statistics. The Ministry of Economic Affairs and Employment compiles statistics on the clients of the Employment and economic development offices (TE offices), including registered job-seekers, labour market policy services, and job vacancies reported to TE offices by employers. The data is collected from the customer service registry (URA) used by the TE offices. This means that the data used by MEAE Employment Service Statistics is completely registry-based. The statistical data covers all persons, services, and open vacancies in the aforementioned groups, as separately defined in the registry by the classifications and variables for the statistical period in question.

Owing to seasonal variations, the Employment Bulletin always includes a comparison with the corresponding month in the previous year. The descriptors used in the Bulletin are also available in a table format. The Employment Bulletins are published at the end of the subsequent calendar month. The official date of publication is announced in advance.

The following symbols have been used:

. Category not applicable

... Data subject to secrecy

### Links:

• **Employment Service Statistics online:**

<https://www.tem.fi/en/employment-bulletin-and-employment-service-statistics>

• **Employment Service Statistics, Description and Quality Description**

<https://www.tem.fi/en/release-dates-of-statistics-and-description-and-quality-description>

• **You can access key information from MEAE's Employment Service Statistics by visiting the Statistics Finland's StatFin database:**

<https://statfin.stat.fi/PxWeb/pxweb/en/StatFin/>

• **The Employment Service Statistics data is also available from the MEAE Publications page (only available in Finnish).**

<https://www.tem.fi/tyopoliittinen-aikakauskirja>

• **Comparison between the statistics of Statistics Finland and the Ministry of Economic Affairs and Employment**

[https://www.stat.fi/til/tyti/tyti\\_2019-09-13\\_men\\_001\\_en.html](https://www.stat.fi/til/tyti/tyti_2019-09-13_men_001_en.html)

• **Comparison between the Job Vacancy Survey of Statistics Finland and Employment Service Statistics of the Ministry of Economic Affairs and Employment**

[https://tilastokeskus.fi/til/atp/atp\\_2017-01-02\\_men\\_001.html](https://tilastokeskus.fi/til/atp/atp_2017-01-02_men_001.html)

• **Local government pilots on employment (In Finnish):**

<https://app.powerbi.com/view?r=eyJrIjoizGVhNWM2ZWUtMWlwZi00OWJlThlZDYtZmE5NmZlYjRiODI0IiwidCI6ImQ5NTk1MWE2LWWRmZDMtNGE3NC05YWJiLWYyYjYjYjg5ZDY3MSIsImMiOjIj>

### Instructions for referencing:

Official Statistics of Finland (OSF): Ministry of Economic Affairs and Employment / Employment Service Statistics. ISSN 1797-3694 202Y:MM, Employment Bulletin, MONTH 202Y. Helsinki: Ministry of Economic Affairs and Employment. (date of reference). Available at:  
<https://www.temtyollisyyskatsaus.fi>



## Contact information

### **Ministry of Economic Affairs and Employment**

Employment and Well-Functioning Markets Department

Kaisa-Mari Kuusela, +358 29 504 8294

Petri Syvänen, +358 29 504 8050

Suvi Timonen, +358 29 504 7288

E-mail: [firstname.lastname@gov.fi](mailto:firstname.lastname@gov.fi) /  
[temtyonvalitystilasto@gov.fi](mailto:temtyonvalitystilasto@gov.fi)

<https://www.temtyollisyyskatsaus.fi>

ISSN: 1797-3694 (online publication)

