



# Employment Bulletin

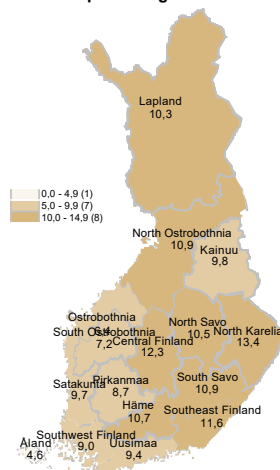
February 2023



Ministry of Economic Affairs  
and Employment of Finland

## In February, 258,100 unemployed jobseekers

Unemployed jobseekers' percentage of the workforce by ELY centre



At the end of February, a total of 258,100 unemployed jobseekers were registered at the Employment and Economic Development Offices and municipalities participating in the local government pilots on employment. This is 7,500 fewer than a year earlier, and unchanged from the previous month. Unemployed jobseekers accounted for 9.7% of the labour force, which is 0.4 percentage points less than the year before. The figures are from the Employment Service Statistics of the Ministry of Economic Affairs and Employment.

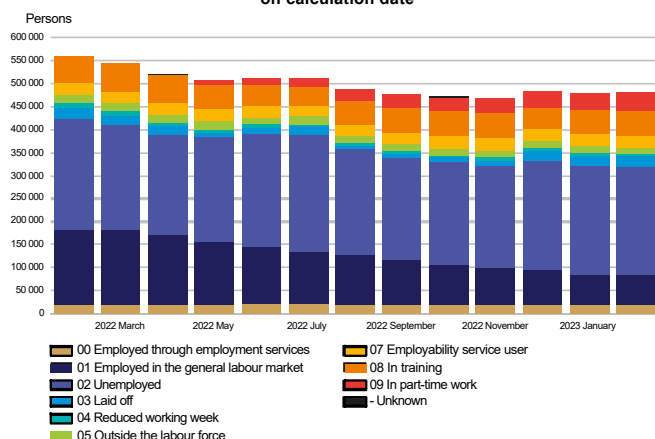
### Trends:

- Total number of all jobseekers decreased by 80,400
- The number of unemployed jobseekers decreased by 7,500 from the previous year
- The number of people fully laid off decreased by 2,600
- Services included in the activation rate had 2,600 more people than a year ago
- The number of new job vacancies decreased by 30,500 from the previous year



## All jobseekers

**Jobseekers by group  
on calculation date**



### The total number of jobseekers decreased

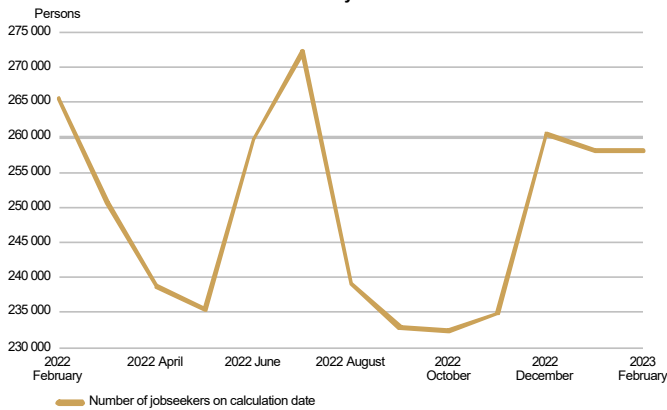
At the end of February, the number of jobseekers registered at the Employment and Economic Development Offices and municipalities participating in the local government pilots on employment totalled 479,600, down 80,400 on the previous year. Of the jobseekers, 250,900 were men and 228,700 were women. Compared to the situation a year ago, the number of men decreased by 34,400 and the number of women by 46,000. Of the jobseekers, 236,900, or 1,000 less than a year earlier, were customers of municipalities participating in the local government pilots on employment.

Of the jobseekers, 121,500 were employed: 64,100 of them were in full-time work, 37,700 were in part-time work and 19,700 were employed through the services organised by the employment and economic development administration and local government pilots on employment. The number of jobseekers outside the labour force was 93,700, of whom 24,900 were in services promoting employment and 54,900 in training. Of the jobseekers, 258,100 were unemployed jobseekers, which is 7,500 less than the year before. In February, 24,300 of unemployed jobseekers were fully laid off, which is 1,900 more than in January. The number of people fully laid off decreased by 2,600 from February a year earlier. Furthermore, jobseekers on a reduced working week numbered 6,300, representing a decrease of 2,200 from the year before.



## Unemployed jobseekers

**UNEMPLOYED JOBSEEKERS**  
monthly

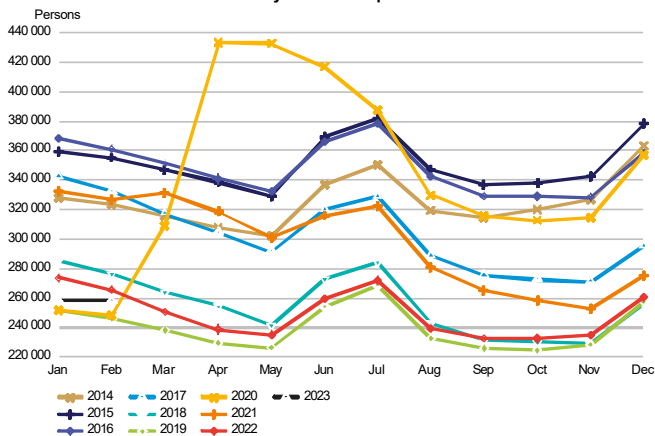


### Decrease in unemployed jobseekers in February

At the end of February, the number of unemployed jobseekers registered at the Employment and Economic Development Offices and municipalities participating in the local government pilots on employment totalled 258,100, down 7,500 on the previous year. The number of unemployed jobseekers remained unchanged from January. Of the unemployed jobseekers, 140,800, were customers of municipalities participating in the local government pilots on employment, which is unchanged from February last year. The number of new job searches among unemployed jobseekers totalled 13,100 in February, up 2,300 from February a year ago. In February, the number of starting periods of unemployment totalled 33,500, representing an increase of 2,900 on the year before. The number of starting periods of unemployment decreased by 12,800 from January. The number of starting periods is always greater than the number of job searches because new unemployment periods are also registered from the existing groups of jobseekers.

The number of foreign citizens among unemployed jobseekers totalled 35,500, up 5,600 from February a year ago. Of these foreign unemployed jobseekers, EU/EEA citizens accounted for 9,500 at the end of February, up 100 from the year before.

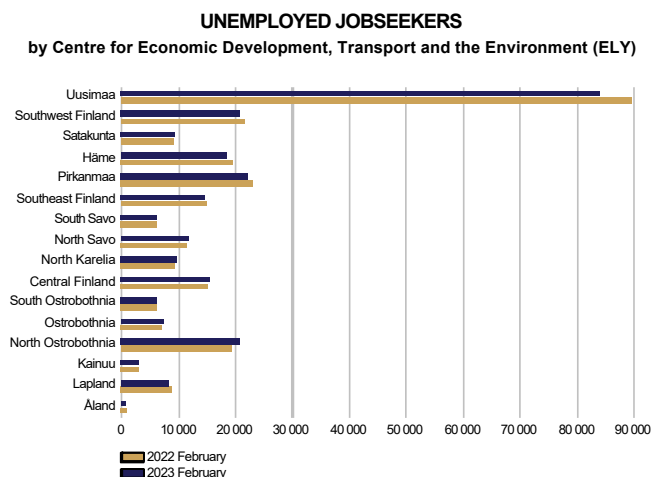
**UNEMPLOYED JOBSEEKERS**  
month by month comparison



In February, 24,300 of the unemployed jobseekers were fully laid off, which is 1,900 more than in January. The number of people fully laid off decreased by 2,600 from February a year earlier. In February, the number of job searches among the fully laid off people totalled 3,000, representing an increase of 400 on the year before. The number of starting periods of full lay-offs was 9,800, up 2,000 from February a year ago. The number of starting periods of full lay-offs decreased by 1,600 from January. Examined by occupation, the number of people fully laid off increased in six groups and decreased in four groups. The number of people fully laid off increased the most in the groups of craft and related trades workers (1,500), plant and machine operators, and assemblers (900), and 'unknown' (200). The number of people fully laid off decreased the most in the groups of service and sales workers (-4,500), elementary occupations (-500) and office and customer service workers (-400). The number of laid-off people remained unchanged in the groups of armed forces.



### Unemployed jobseekers by region



### Unemployment decreased in the areas of nine ELY Centres

Compared to the same period in the previous year, the number of unemployed jobseekers decreased in February in the areas of nine Centres for Economic Development, Transport and the Environment (ELY Centres); the most in Lapland (-7%), Häme (-7%), Uusimaa (-6%), Southwest Finland (-4%) and Pirkanmaa (-3%). The number of unemployed jobseekers grew the most in North Ostrobothnia (8%), Ostrobothnia (4%) and North Savo (2%). In Central Finland, the number of unemployed jobseekers was unchanged. The number of unemployed jobseekers fell the most in Åland, by 21%. Compared with January, the number of unemployed jobseekers decreased in the areas of seven ELY Centres; the most in Kainuu (-2%), Satakunta (-2%), North Karelia (-2%) and Lapland (-2%). Meanwhile, the number of unemployed jobseekers grew the most in South Savo (5%), Central Finland (3%) and Pirkanmaa (2%). In Åland, the number of unemployed jobseekers increased 1% from January.

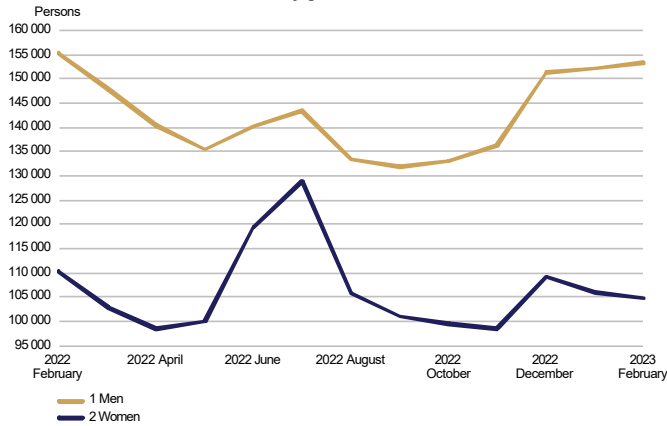
### Unemployed jobseekers and jobs vacant in Employment and Economic Development Office by ELY centre

ELY centre	Unemployed jobseekers		Change		Of the Unemployed jobseekers'			Jobs vacant		Change		
	Feb 2023	Jan 2023	Feb 2023	Feb 2022	Feb 2023	unemployed jobseekers fully laid off	jobseekers' percentage of the workforce	Feb 2023	Jan 2023	Feb 2023	Feb 2022	
Uusimaa	83 912	84 135	89 388	-5 476	-6	5 105	9,4	28 864	28 605	37 181	-8 317	-22
Southwest Finland	20 738	21 047	21 631	-893	-4	2 063	9,0	9 117	9 167	12 515	-3 398	-27
Satakunta	9 249	9 445	9 205	44	0	976	9,7	3 479	3 977	4 644	-1 165	-25
Häme	18 341	18 315	19 627	-1 286	-7	1 679	10,7	6 840	5 672	8 687	-1 847	-21
Pirkanmaa	22 154	21 793	22 952	-798	-3	1 893	8,7	11 801	10 999	14 437	-2 636	-18
Southeast Finland	14 608	14 503	14 851	-243	-2	1 681	11,6	3 344	4 520	4 940	-1 596	-32
South Savo	6 064	5 780	6 124	-60	-1	868	10,9	3 465	3 308	4 420	-955	-22
North Savo	11 769	11 715	11 541	228	2	1 550	10,5	5 042	4 561	6 414	-1 372	-21
North Karelia	9 527	9 720	9 494	33	0	783	13,4	2 601	2 423	2 624	-23	-1
Central Finland	15 334	14 917	15 320	14	0	1 804	12,3	3 093	3 409	4 746	-1 653	-35
South Ostrobothnia	6 136	6 092	6 171	-35	-1	1 120	7,2	4 361	4 627	5 688	-1 327	-23
Ostrobothnia	7 280	7 215	6 983	297	4	964	6,4	9 002	8 642	11 145	-2 143	-19
North Ostrobothnia	20 746	20 928	19 260	1 486	8	2 272	10,9	9 629	8 441	10 722	-1 093	-10
Kainuu	3 022	3 091	3 059	-37	-1	416	9,8	1 629	1 553	1 654	-25	-2
Lapland	8 241	8 401	8 882	-641	-7	980	10,3	4 870	4 509	5 975	-1 105	-18
Åland	680	673	857	-177	-21	41	4,6	632	673	719	-87	-12
Abroad	259	254	244	15	6	84	.	5 302	4 415	3 558	1 744	49
<b>WHOLE COUNTRY</b>	<b>258 064</b>	<b>258 028</b>	<b>265 591</b>	<b>-7 527</b>	<b>-3</b>	<b>24 279</b>	<b>9,7</b>	<b>113 071</b>	<b>109 501</b>	<b>140 069</b>	<b>-26 998</b>	<b>-19</b>



## Unemployed jobseekers by gender and age-group

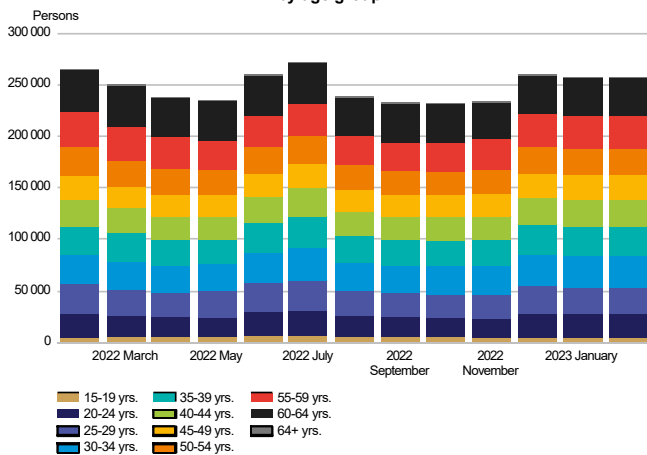
**UNEMPLOYED JOBSEEKERS  
by gender**



### Unemployment decreased more among women than men

Of the unemployed jobseekers, 153,300 (59%) were men and 104,800 (41%) were women, indicating an increase of 1,200 for men and a decrease of 1,200 for women from the figures for January. Compared with February a year ago, unemployment decreased by 2,000 (-1%) among men and by 5,500 (-5%) among women.

**UNEMPLOYED JOBSEEKERS  
by age group**



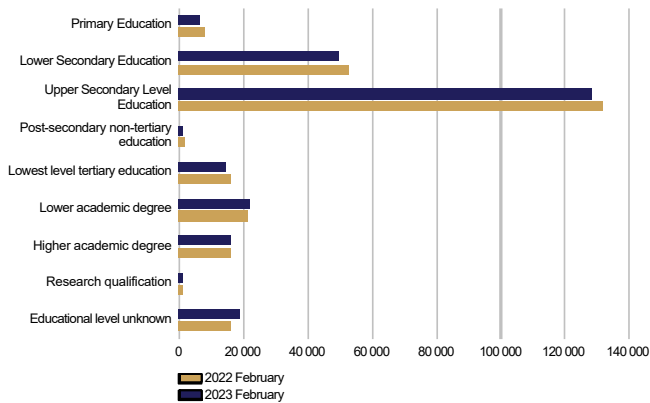
### Unemployment decreased the most among those over 50

At the end of February, unemployed jobseekers under 25 years of age numbered 27,000, representing a decrease of 1,200 from February a year ago. Youth unemployment decreased by 400 from January. For those under 20, the number of unemployed was 5,000. Among those over 50, the number of unemployed was 95,800, representing a decrease of 7,500 on the year before. Among those over 55, the number of unemployed was 70,300, representing a decrease of 5,700 on the year before. Unemployment decreased the most among those between 60 and 64 (-9%), those between 50 and 54 (-7%) and those over 64 (-6%). Unemployment increased the most among those between 30 and 34 (3%) and those between 40 and 44 years of age (3%). Compared with January, unemployment decreased in five age groups. Unemployment fell the most among those under 20 (-3%) from January.



## Unemployed jobseekers by levels of education and occupational group

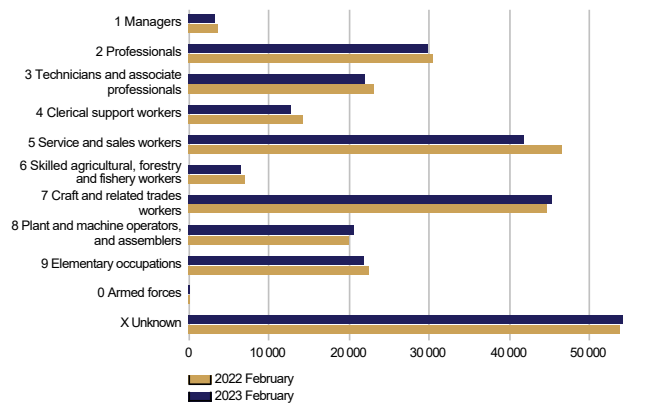
**UNEMPLOYED JOBSEEKERS  
by level of education**



### Unemployment decreased at six levels of education

Examined by level of education, unemployment decreased from February last year at six levels of education. Unemployment decreased the most among those with lower level basic qualifications (-22%), lowest level of tertiary education (-11%), post-secondary non-tertiary education (-7%) and higher level basic qualifications (-6%). Unemployment grew among those with level of education 'unknown' (16%) and lower-degree level tertiary education (2%). Among those with higher-degree level tertiary education unemployment remained unchanged.

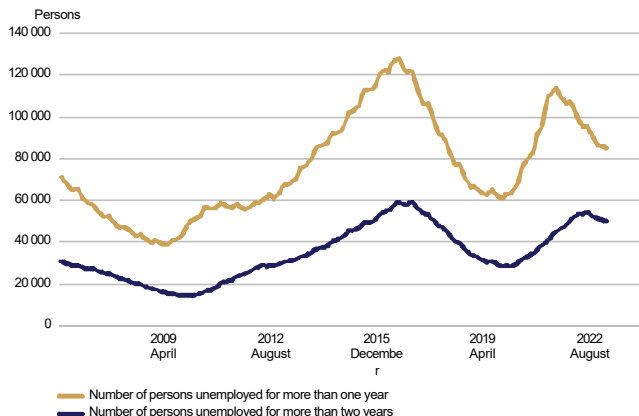
**UNEMPLOYED JOBSEEKERS  
by occupational group**



### Unemployment decreased in seven occupational groups

Examined by occupation, unemployment decreased in seven groups from February last year; the most in the groups of service and sales workers (-4,700), office and customer service workers (-1,400), technicians and associate professionals (-1,100), elementary occupations (-700), and professionals (-700). Unemployment increased in the groups of craft and related trades workers (600), plant and machine operators, and assemblers (600) and 'unknown' (600). Unemployment remained unchanged in the group of armed forces.

**LONG-TERM UNEMPLOYED  
at the end of the month**

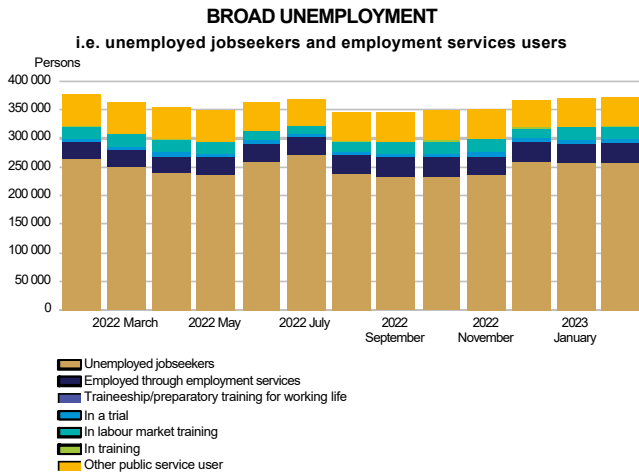


### Decrease in long-term unemployment

At the end of February, the number of long-term unemployed who had been unemployed without interruption for more than a year amounted to 85,100, down 18,700 on the previous year. Of the long-term unemployed, 51,900 were men and 33,200 were women. The number of men decreased by 10,500 (-17%) from the previous year and the number of women by 8,200 (-20%). Long-term unemployed who had been unemployed without interruption for more than two years numbered 50,000, which is 2,200 less than a year ago.



## Services

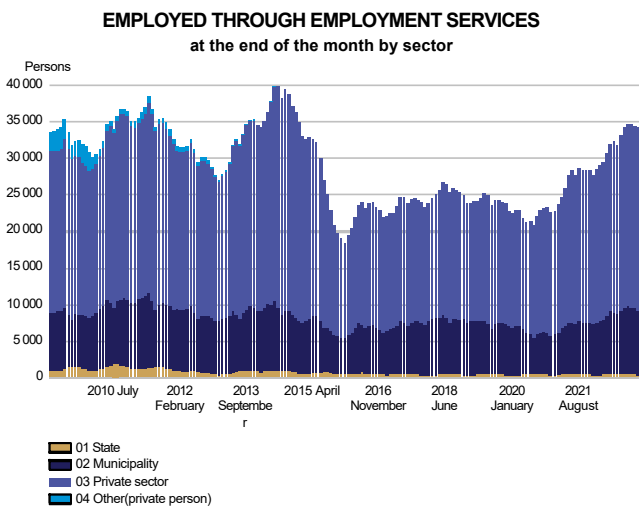


### Increase in the number of persons covered by services

At the end of February, the number of persons covered by services included in the activation rate amounted to 114,000, up 2,600 on the previous year. Compared with January, the number of persons covered by such services increased by 2,600. Of those covered by services, 65,100 were customers of the local government pilots, which is 3,800 more than in February last year. The activation rate at the end of February was 30.6%, which is 1.0 percentage points higher than a year earlier. In all, 4.1% of the labour force were covered by these services.

Of those covered by services, the number of men was 54,300, up 1,400 on the previous year. The number of women covered by these services was 59,800, up 1,200 on the previous year.

Broad unemployment, or the total number of unemployed jobseekers and those covered by services, was 372,100 at the end of February. This is 4,900 less than a year earlier. The decrease in broad unemployment was due to a decrease in the number of unemployed.



### The number of placements increased in local government and the private sector

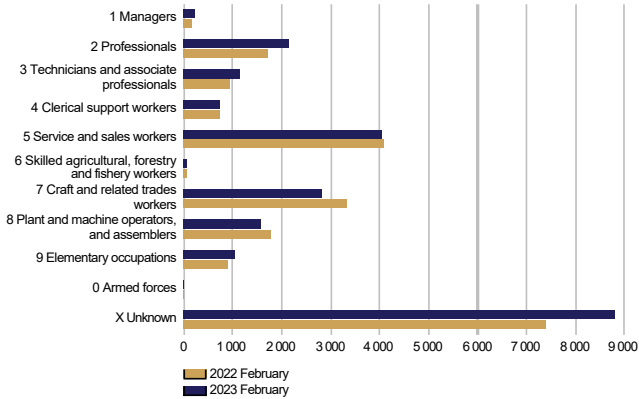
At the end of February, the number of persons claiming pay subsidies, employed by the State or receiving start-up grants totalled 34,400, which is 5,400 more than the year before. Of those in placements, 1% were in central government jobs, 26% in local government jobs and 73% in the private sector. Since February last year, the number of placements had increased by 20% in local government jobs and by 19% in the private sector, but decreased by 14% in central government jobs. Of those in placements, 52% were men. Placements for men increased by 3,100, and those for women by 2,300 from the previous year.





## Labour market training, training and self-motivated studies

**PERSONS IN LABOUR MARKET TRAINING**  
in target profession at the end of the month

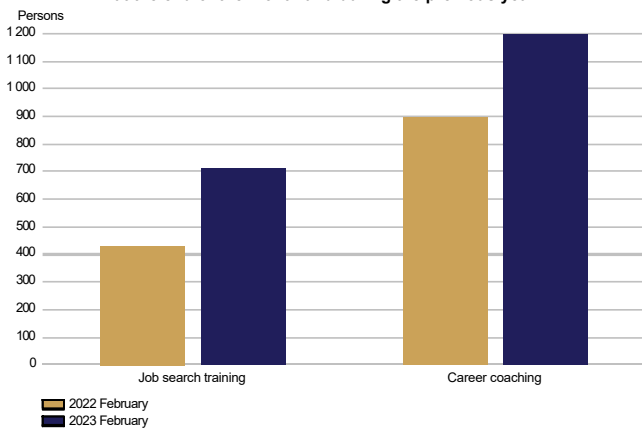


### Increase in the number of persons in labour market training

At the end of February, labour market training was attended by 22,600 students, up 1,500 on the previous year. Of the students, 10,300 were men and 12,300 were women. The number of men increased by 100, and the number of women by 1,400 from February last year. During February, 4,800 new students began labour market training, representing an increase of 1,000 on the year before.

Based on target occupation, the largest subgroup within the category of 'unknown' were people in integration training (8,200), which is 1,600 more than the year before.

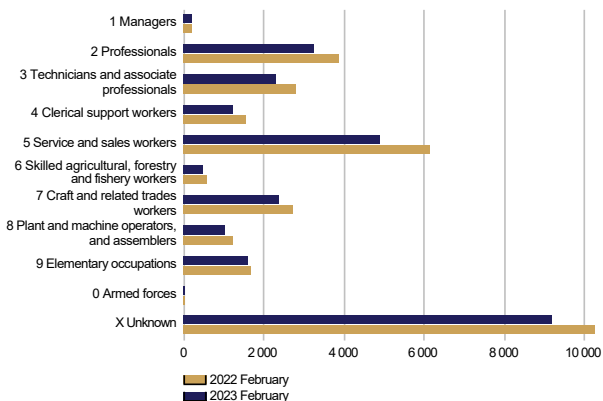
**IN TRAINING**  
at the end of the month and during the previous year



### The number of persons in training increased

At the end of February, 1,900 persons were in training, which is 600 more than the year before. Of those in training, 1,000 were men and 900 were women. Career coaching had 1,200 participants in February, which is 300 more than a year earlier. The number of people receiving job search training was 700, which is 300 more than the previous year.

**IN SELF-MOTIVATED STUDIES**  
in person's profession at the end of the month



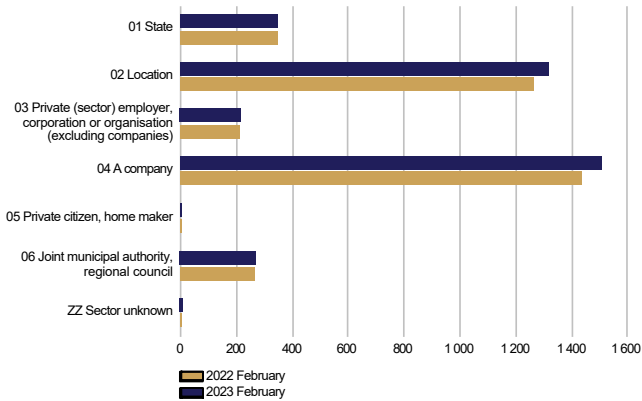
### The number of people in self-motivated study decreased from the previous year

Self-motivated studies supported by unemployment benefits were attended by a total of 26,500 people, representing a decrease of 4,500 on the year before. The number of men receiving unemployment benefits for studies was 10,100, down 1,900 on the previous year. Among women, the number was 16,400, representing a decrease of 2,700 on the year before. Occupation was undetermined in case of 8,400 persons in the group of 'unknown', down 800 on the previous year.



## Job alternation, rehabilitative work and trials

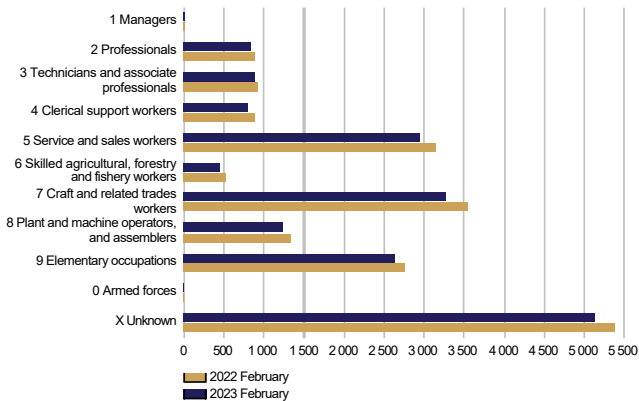
**AS A JOB ALTERNATION SUBSTITUTE**  
at the end of the month and during the previous year by sector



### The number of job alternation substitutes increased

A total of 3,700 persons were job alternation substitutes at the end of February, which is 200 more than a year earlier. Of the substitutes, 1,300 were men and 2,300 were women. The number of men increased by 100 and the number of women likewise by 100 from the previous year.

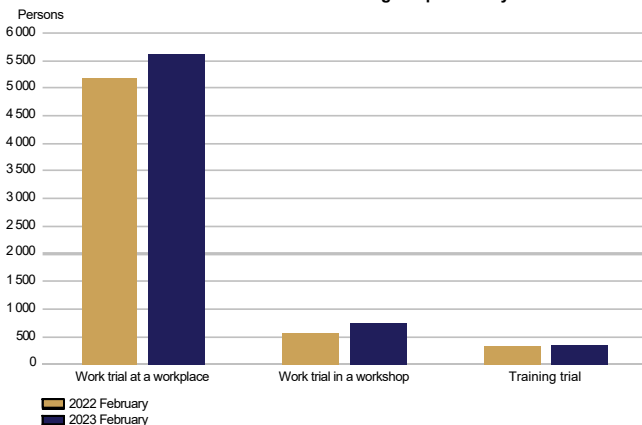
**REHABILITATIVE WORK ACTIVITIES**  
at the end of the month and during the previous year



### Fewer participants in rehabilitative work activities than in the previous year

A total of 18,200 persons participated in rehabilitative work activities at the end of February, which is 1,200 less than a year earlier. Of the participants 10,200 were men and 8,000 were women. Compared to the situation a year ago, the number of men decreased by 700 and the number of women by 500.

**IN TRIALS**  
at the end of the month and during the previous year



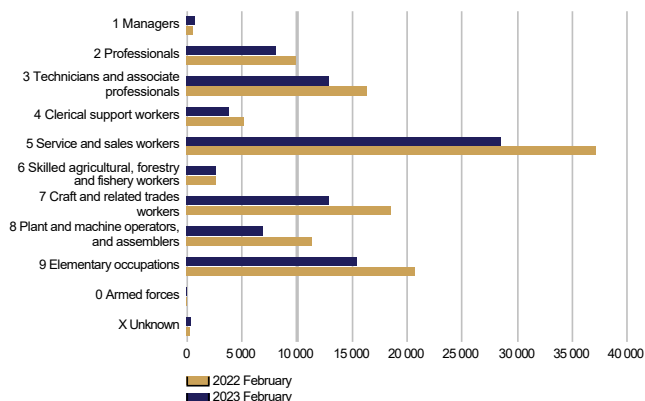
### Participation in work and training trials increased

Work and training trials had a total of 6,700 participants at the end of February, which is 700 more than the previous year. Of the participants, 3,300 were men and 3,400 were women. The number of men increased by 300 and the number of women also by 300 from the previous year.



### Jobs vacant

**NEW JOB VACANCIES**  
during the month and during the previous year



### Decrease in the number of new vacancies

The number of new vacancies reported to Employment and Economic Development Offices and municipalities participating in the local government pilots on employment during February totalled 92,000, which is 30,500 fewer than in February last year. In all, the number of unfilled vacancies in February was 198,400, which is 44,000 fewer than a year ago. A total of 11,300 of these vacancies were filled during February, 1,700 of them through Employment and Economic Development Offices. A total of 65,600 vacancies were closed for applications because the application period had ended or because there was a sufficient number of applicants. In addition, a total of 13,100 vacancies were cancelled and 1,100 vacancies could not be filled. The number of vacancies remaining unfilled at Employment and Economic Development Offices and in local government pilots at the end of February was 113,100, down 27,000 on the previous year.

The number of new vacancies had decreased in seven occupational groups; the greatest decreases were in the groups of service and sales workers (-8,700), craft and related trades workers (-5,700), elementary occupations (-5,200), plant and machine operators, and assemblers (-4,500) and associate professionals and technicians (-3,500). The number of new vacancies increased the most in the groups of managers (100) and skilled agricultural, forestry and fishery workers (100).



### Summary table

EMPLOYMENT SITUATION AT THE END OF 2023 FEBRUARY (I) AND  
ACTIVITIES OF EMPLOYMENT AND ECONOMIC DEVELOPMENT OFFICES DURING FEBRUARY (II)  
WHOLE COUNTRY

I EMPLOYMENT SITUATION AT THE END OF MONTH	Feb-23	Feb-22	CHANGE NUMBER	CHANGE %
<b>A. JOBSEEKERS</b>				
1. Unemployed jobseekers	258 064	265 591	-7 527	-2,8
of whom fully laid off	24 279	26 841	-2 562	-9,5
2. On reduced working week	6 279	8 472	-2 193	-25,9
3. Those who have work	121 515	182 919	-61 404	-33,6
of which in full-time work	64 103	161 823	-97 720	-60,4
of which in part-time work	37 731	0	37 731	0,0
of whom employed through employment services	19 681	21 096	-1 415	-6,7
4. Persons outside the labour force	93 723	103 012	-9 289	-9,0
of whom in services promoting employment	24 867	25 354	-487	-1,9
of whom in training	54 888	59 285	-4 397	-7,4
<b>1-4 Total of jobseekers</b>	<b>479 581</b>	<b>559 994</b>	<b>-80 413</b>	<b>-14,4</b>
<b>B. LABOUR DEMAND</b>				
1. Jobs vacant	113 071	140 069	-26 998	-19,3
of those notified for over a month	47 369	54 366	-6 997	-12,9
of those notified for over 2 months	13 724	22 694	-8 970	-39,5
<b>C. PARTICIPATING IN SERVICES</b>				
1. Employed by the State	359	418	-59	-14,1
2. Employed by municipalities	8 878	7 387	1 491	20,2
3. Employed by the private sector	25 176	21 166	4 010	18,9
<b>1-3 Total number of employed people</b>	<b>34 413</b>	<b>28 971</b>	<b>5 442</b>	<b>18,8</b>
4. Labour market training	22 614	21 102	1 512	7,2
5. Training	1 907	1 328	579	43,6
6. Engaged in work/training trials	6 731	6 073	658	10,8
7. As a job alternation substitute	3 693	3 523	170	4,8
8. Rehabilitative work	18 188	19 395	-1 207	-6,2
9. Self-motivated studies supported by unemployment benefit	26 504	31 035	-4 531	-14,6
<b>1-9 Total number of people participating in services</b>	<b>114 050</b>	<b>111 427</b>	<b>2 623</b>	<b>2,4</b>
<b>D. STRUCTURE OF UNEMPLOYMENT</b>				
1. Unemployed women	104 757	110 259	-5 502	-5,0
2. Unemployed men	153 307	155 332	-2 025	-1,3
3. Under 25 years old	26 975	28 181	-1 206	-4,3
4. Over 50 years old	95 761	103 301	-7 540	-7,3
5. Unemployed over a year	85 149	103 806	-18 657	-18,0
6. Foreign unemployed	35 548	29 947	5 601	18,7
<b>E. UNEMPLOYMENT SECURITY</b>				
1. Unemployed members of employees' unemployment funds	96 055	103 958	-7 903	-7,6
<b>II EMPLOYMENT SITUATION DURING THE MONTH</b>				
1. Unemployed jobseekers	283 905	292 686	-8 781	-3,0
2. Other jobseekers	219 044	291 450	-72 406	-24,8
<b>1-2 Total number of jobseekers</b>	<b>502 949</b>	<b>584 136</b>	<b>-81 187</b>	<b>-13,9</b>
3. Vacancies during a month	198 371	242 388	-44 017	-18,2
New vacancies during a month	91 964	122 434	-30 470	-24,9
Vacancies filled during a month	11 325	13 410	-2 085	-15,5
of those filled with job-seekers at the Employment Service	1 686	2 589	-903	-34,9
Vacancies application period ended or sufficient number of applicants	65 569	89 127	-23 558	-26,4
Vacancies cancelled or could not be filled	14 127	7 601	6 526	85,9
4. Started spell of unemployment	33 503	30 572	2 931	9,6
5. Completed spell of unemployment	31 664	35 169	-3 505	-10,0
6. New jobs found through employment services	2 503	2 612	-109	-4,2
7. New entrants to labour market training	4 826	3 854	972	25,2



### Foreigners' summary table

FOREIGNERS' EMPLOYMENT SITUATION AT THE END OF 2023 FEBRUARY (I) AND  
ACTIVITIES OF EMPLOYMENT AND ECONOMIC DEVELOPMENT OFFICES DURING FEBRUARY (II)  
WHOLE COUNTRY

I EMPLOYMENT SITUATION AT THE END OF MONTH	Feb-23	Feb-22	CHANGE NUMBER	CHANGE %
<b>A. JOBSEEKERS</b>				
1. Unemployed jobseekers	35 548	29 947	5 601	18,7
of whom fully laid off	3 155	3 177	-22	-0,7
2. On reduced working week	443	582	-139	-23,9
3. Those who have work	16 263	19 515	-3 252	-16,7
of which in full-time work	10 220	17 686	-7 466	-42,2
of which in part-time work	4 069	0	4 069	0,0
of whom employed through employment services	1 974	1 829	145	7,9
4. Persons outside the labour force	31 865	29 143	2 722	9,3
of whom in services promoting employment	2 807	2 602	205	7,9
of whom in training	27 022	24 287	2 735	11,3
<b>1-4 Total of jobseekers</b>	<b>84 119</b>	<b>79 187</b>	<b>4 932</b>	<b>6,2</b>
<b>C. PARTICIPATING IN SERVICES</b>				
1. Employed by the State	7	6	1	16,7
2. Employed by municipalities	659	499	160	32,1
3. Employed by the private sector	2 251	1 706	545	31,9
<b>1-3 Total number of employed people</b>	<b>2 917</b>	<b>2 211</b>	<b>706</b>	<b>31,9</b>
4. Labour market training	11 690	9 298	2 392	25,7
5. Training	183	82	101	123,2
6. Engaged in work/training trials	1 384	1 286	98	7,6
7. As a job alternation substitute	76	67	9	13,4
8. Rehabilitative work	1 166	1 171	-5	-0,4
9. Self-motivated studies supported by unemployment benefit	12 779	13 602	-823	-6,1
<b>1-9 Total number of people participating in services</b>	<b>30 195</b>	<b>27 717</b>	<b>2 478</b>	<b>8,9</b>
<b>D. STRUCTURE OF UNEMPLOYMENT</b>				
1. Unemployed women	17 175	14 378	2 797	19,5
2. Unemployed men	18 373	15 569	2 804	18,0
3. Under 25 years old	2 461	1 829	632	34,6
4. Over 50 years old	9 013	8 285	728	8,8
5. Unemployed over a year	8 649	10 179	-1 530	-15,0
<b>E. UNEMPLOYMENT SECURITY</b>				
1. Unemployed members of employees' unemployment funds	6 758	6 570	188	2,9
<b>II EMPLOYMENT SITUATION DURING THE MONTH</b>				
1. Unemployed jobseekers	40 028	33 451	6 577	19,7
2. Other jobseekers	46 981	48 155	-1 174	-2,4
<b>1-2 Total number of jobseekers</b>	<b>87 009</b>	<b>81 606</b>	<b>5 403</b>	<b>6,6</b>
4. Started spell of unemployment	5 186	3 629	1 557	42,9
5. Completed spell of unemployment	4 999	4 128	871	21,1
6. New jobs found through employment services	246	195	51	26,2
7. New entrants to labour market training	2 372	1 442	930	64,5



## Regional table

UNEMPLOYED JOBSEEKERS AND JOBS VACANT BY ELY CENTRE AT THE END OF 2023 FEBRUARY  
WHOLE COUNTRY

ELY centre	Workforce	Unemployed jobseekers						Unemployed over a year	Disabled and chron. ill	Jobs vacant	
		% of workforce	Total	Men	Women	Under 20 years old	Under 25 years old				Over 50 years old
Uusimaa	892 621	9,4	83 912	47 022	36 890	1 187	7 104	29 598	33 348	7 483	28 864
Southwest Finland	231 049	9,0	20 738	12 325	8 413	417	2 174	7 479	6 618	2 498	9 117
Satakunta	95 787	9,7	9 249	5 635	3 614	246	1 069	3 740	2 490	1 196	3 479
Häme	170 959	10,7	18 341	10 885	7 456	346	1 856	7 662	7 130	3 217	6 840
Pirkanmaa	253 537	8,7	22 154	12 736	9 418	399	2 359	7 608	6 055	2 652	11 801
Southeast Finland	126 427	11,6	14 608	8 939	5 669	271	1 473	6 280	3 796	1 808	3 344
South Savo	55 795	10,9	6 064	3 845	2 219	125	644	2 655	1 633	1 107	3 465
North Savo	112 262	10,5	11 769	7 564	4 205	234	1 372	4 582	3 909	1 640	5 042
North Karelia	71 079	13,4	9 527	5 912	3 615	180	1 026	3 993	3 199	1 330	2 601
Central Finland	124 507	12,3	15 334	9 461	5 873	375	1 921	5 505	4 760	1 610	3 093
South Ostrobothnia	85 288	7,2	6 136	3 782	2 354	159	816	2 265	1 154	1 015	4 361
Ostrobothnia	112 918	6,4	7 280	4 399	2 881	176	879	2 638	1 941	983	9 002
North Ostrobothnia	190 152	10,9	20 746	12 756	7 990	585	3 093	6 491	6 082	2 606	9 629
Kainuu	30 690	9,8	3 022	2 028	994	69	313	1 422	551	536	1 629
Lapland	80 179	10,3	8 241	5 443	2 798	161	775	3 549	2 237	1 102	4 870
Åland	14 916	4,6	680	395	285	...	86	228	182	41	632
Abroad	0	0,0	259	178	81	...	12	66	62	10	5 302
<b>Total</b>	<b>2 648 166</b>	<b>9,7</b>	<b>258 064</b>	<b>153 307</b>	<b>104 757</b>	<b>4 955</b>	<b>26 975</b>	<b>95 761</b>	<b>85 149</b>	<b>30 834</b>	<b>113 071</b>





## Contact information

### **Ministry of Economic Affairs and Employment**

Employment and Well-Functioning Markets Department

Kaisa-Mari Kuusela, +358 29 504 8294

Petri Syvänen, +358 29 504 8050

Suvi Timonen, +358 29 504 7288

E-mail: [firstname.lastname\(at\)gov.fi](mailto:firstname.lastname(at)gov.fi) /  
[temtyonvalitystilasto\(at\)gov.fi](mailto:temtyonvalitystilasto(at)gov.fi)

<https://www.temtyollisyyskatsaus.fi>

ISSN: 1797-3694 (online publication)

