



MINISTRY OF SOCIAL AFFAIRS  
AND RELATED AUTHORITIES

■ MINISTRY OF SOCIAL AFFAIRS AND HEALTH  
**Brochures Ieng (2011)**



Brochures of the Ministry of Social Affairs and Health Ieng (2011)

MINISTRY OF  
SOCIAL AFFAIRS AND HEALTH  
AND RELATED AUTHORITIES

■ MINISTRY OF SOCIAL AFFAIRS AND HEALTH  
Helsinki, Finland 2011

Ministry of Social Affairs and Health and related authorities

Brochures of the Ministry of Social Affairs and Health Ieng

ISBN 978-952-00-3322-4 (pb)

ISBN 978-952-00-3323-1 (PDF)

URN:ISBN-978-952-00-3323-1

[www.stm.fi/en/publications](http://www.stm.fi/en/publications)

Cover image: Plugi Oy

Publisher: Ministry of Social Affairs and Health, Finland

Layout and printing: Juvenes Print – Tampere University Press, Tampere 2011

## Contents

Ministry of Social Affairs and Health .....	6
Strategic goals of social welfare and health care policy .....	8
Organisation .....	9
Departments .....	11
Department for Promotion of Welfare and Health .....	11
Department for Social and Health Services .....	12
Department for Occupational Safety and Health .....	13
Insurance Department .....	14
Administration and Planning Department .....	15
Special units .....	17
Advisory Staff Unit .....	17
International Affairs Unit .....	17
Preparedness Unit .....	18
Information and Communication Unit .....	18
Ombudsmen attached to the Ministry of Social Affairs and Health	19
Office of the Ombudsman for Equality .....	19
Office of the Ombudsman for Children .....	19
Advisory boards and committees attached to the Ministry of Social Affairs and Health .....	21
Appeal boards .....	23
Organisations in the administrative branch of the Ministry of Social Affairs and Health .....	26
Regional State Administrative Agencies .....	27
Finnish Medicines Agency (Fimea) .....	27
Slot Machine Association .....	27
National Supervisory Authority for Welfare and Health (Valvira)	28
Finnish Radiation and Nuclear Safety Authority .....	28
National Institute for Health and Welfare .....	28
Finnish Institute of Occupational Health .....	29
Social security expenditure and funding .....	30
Service expenditure and financing .....	32
Local government expenditure and financing .....	32
Health care expenditure and financing .....	33

# Ministry of Social Affairs and Health

*The purpose of the Ministry of Social Affairs and Health is to ensure that everyone has equal opportunity to lead a healthy and safe life..*

The duties of the Ministry of Social Affairs and Health are

- to promote the health and functional capacity of the population,
- to promote healthy workplace and living environments,
- to ensure sufficient social welfare and health care services,
- to safeguard a reasonable income at various stages in life, and
- to promote gender equality.

The Ministry of Social Affairs and Health manages the preparation and implementation of Finland's social welfare and health care policy, gender equality policy and occupational safety and health policy. As part of the government, the Ministry puts the Government Programme into practice, determines development guidelines, drafts legislation and key reforms and guides their implementation.

The Ministry of Social Affairs and Health has a broad mandate. It supervises several independent agencies and institutions which implement the social welfare and health care policy goals laid out by the Ministry and participate in Government Programme projects.

The Ministry and the agencies and institutions within its administrative branch employ about 4,800 people.

## **Strategic choices of the Ministry of Social Affairs and Health**

### **1. A strong foundation for welfare**

- Health and welfare in all policies
- Longer working careers through wellbeing at work
- Balancing the various areas of life
- Sustainable social protection financing

### **2. Access to welfare for all**

- Reduce differentials in welfare and health
- Customer-oriented services
- New service structures and operating practices
- Strong sense of social inclusion



### **3. A healthy and safe living environment**

- Strengthen the viability of the environment
- Ensure that society can continue to function under exceptional circumstances

## **Strategic goals of social welfare and health care policy**

The strategic purpose of social welfare and health care policy is to achieve a socially sustainable society where every member is ensured equal treatment, social inclusion and promotion of health and functional capacity.

A socially sustainable society

- treats all of its members fairly and equally,
- reinforces inclusion and a sense of community,
- promotes the health and functional capacity of the population, and
- provides the security and services required.

Sustainable development consists of economic, social and ecological sustainability.

## **Finland in the year 2020**

In 2020, Finland will be a socially sustainable and vibrant society. Underlying the balanced development of society are human equality, material and spiritual wellbeing, gender equality, and economically, socially and ecologically sustainable development.

Social sustainability requires a functioning social security system to help people cope with life's risk situations. Everyone is entitled to social wellbeing, inclusion and the best health possible.

A welfare society fulfils both social and economic goals. Economic development provides the foundation for the welfare society, while social security reinforces the balance between society and the economy. When correctly proportioned and functional, social security is a strength in society.



# Organisation

The work of the Ministry of Social Affairs and Health is directed by two Ministers: the Minister of Social Affairs and Health and the Minister of Health and Social Services. Also, the Minister of Culture and Sport is responsible for gender equality matters. Their work is supported by the State Secretaries and by the Permanent Secretary, who is the highest civil servant in the Ministry.

Under the Permanent Secretary there are five departments and five special units:

- Department for Promotion of Welfare and Health
- Department for Occupational Safety and Health
- Department for Social and Health Services
- Insurance Department
- Administration and Planning Department
- Advisory Staff Unit
- International Affairs Unit
- Preparedness Unit
- Information and Communication Unit
- Office of the Ombudsman for Equality

The Departments are responsible for preparatory work on the key elements of social welfare, health care, social protection, gender equality and occupational safety and health, and for guiding and coordinating the execution of activities in these fields. The work of the Departments is coordinated by the Ministry's Senior Management.

The following independent authorities operate in association with the Departments:

- Pharmaceuticals Pricing Board
- Ombudsman for Children

The special units handle specific tasks for the whole Ministry.

The Ministry's activities are coordinated by the Ministry's leading management and the ministers' management teams.



# Departments

## Department for Promotion of Welfare and Health

The Department supports the wellbeing and social inclusion of citizens, and also their health and functional capacity.

### Groups within the Department and their areas of responsibility:

<b>Injury Prevention Group</b>	<ul style="list-style-type: none"><li>- substance abuse, alcohol, tobacco and drug policy</li><li>- preventing accident injuries in the home and in leisure time, domestic and intimate partner violence, and gambling problems</li><li>- victim-offender mediation in criminal and civil cases</li></ul>
<b>Inclusion Promotion Group</b>	<ul style="list-style-type: none"><li>- preventive social policy</li><li>- social work and social rehabilitation</li><li>- housing allowance and social assistance</li><li>- services for the homeless and the socially excluded</li></ul>
<b>Planning and Monitoring Group</b>	<ul style="list-style-type: none"><li>- National Development Programme for Social Welfare and Health Care (KASTE Programme)</li></ul>
<b>Health Promotion Group</b>	<ul style="list-style-type: none"><li>- social policy affecting health and health promotion</li><li>- preventive health services, maternity and child health clinics, school health care and student health care</li><li>- occupational health care</li><li>- combating communicable and endemic diseases</li></ul>
<b>Environmental Health Care Group</b>	<ul style="list-style-type: none"><li>- health protection</li><li>- chemicals supervision</li><li>- biotechnology, gene technology and nanotechnology</li><li>- radiation monitoring</li></ul>

## Department for Social and Health Services

The Department is responsible for the social services and health care services system, its development and legislation pertaining to it.

The Office of the Ombudsman for Children is attached to the Department.

### **Groups within the Department and their areas of responsibility:**

<b>Clients and Personnel Group</b>	<ul style="list-style-type: none"><li>- status and rights of clients and patients</li><li>- social welfare and health care client fees</li><li>- social welfare and health care personnel and IT</li></ul>
<b>Health Services Group</b>	<ul style="list-style-type: none"><li>- health services, medical rehabilitation, forensic medicine, pharmaceutical services, health care equipment and supplies</li><li>- mental health services and substance abuse services</li></ul>
<b>Social Services Group</b>	<ul style="list-style-type: none"><li>- social services and family policy benefits for families, children and adolescents, older people and people with disabilities</li><li>- international adoptions</li><li>- compensation for military injuries, services for war invalids and veterans</li><li>- farm relief services for farmers and fur farming entrepreneurs</li></ul>

## Department for Occupational Safety and Health

The Department governs the occupational safety and health divisions of the Regional State Administrative Agencies, and also drafts and develops occupational safety and health legislation and policy and engages in international cooperation on wellbeing at work.

### Groups within the Department and their areas of responsibility:

<b>Field Operations Unit</b>	<ul style="list-style-type: none"><li>- regional supervision of occupational safety and health</li><li>- product safety control</li></ul>
<b>Policy Unit</b>	<ul style="list-style-type: none"><li>- wellbeing at work</li><li>- national and EU-level tasks of the European Agency for Safety and Health at Work</li></ul>
<b>Legislation Unit</b>	<ul style="list-style-type: none"><li>- drafting of laws, decrees and other legislation regarding occupational safety and health</li><li>- matters related to the general applicability of collective agreements</li></ul>

## Insurance Department

The Department directs and guides insurance policy and is responsible for drafting social insurance legislation and other insurance legislation.

The Pharmaceuticals Pricing Board attached to the Department confirms the reimbursement status and wholesale prices for medicinal products reimbursed under the Health Insurance Act.

### **Groups within the Department and their areas of responsibility:**

<b>Pension Insurance Unit</b>	<ul style="list-style-type: none"><li>- earnings-related pensions</li><li>- national pensions and survivors' pensions</li><li>- disability and care allowances</li><li>- matters related to accident injuries and occupational diseases</li></ul>
<b>Unemployment and Health Insurance Unit</b>	<ul style="list-style-type: none"><li>- unemployment security</li><li>- health insurance</li><li>- maternity, paternity and parental allowances</li><li>- adult education allowance</li><li>- pharmaceuticals reimbursement system</li></ul>
<b>Insurance Market Unit</b>	<ul style="list-style-type: none"><li>- operation of the insurance market, particularly matters related to the solvency and supervision of insurance companies</li><li>- motor liability, patient and environmental damage insurance</li></ul>
<b>Planning Unit</b>	<ul style="list-style-type: none"><li>- operating and financial planning, financial administration</li><li>- departmental HR and general administration</li></ul>
<b>Co-ordination Unit</b>	<ul style="list-style-type: none"><li>- departmental EU affairs, multilateral and bilateral international affairs and agreements</li></ul>

## Administration and Planning Department

The Department handles tasks related to the financial and general administration of the Ministry and its administrative branch, their planning and performance guidance, and prepares strategic reports.

### Groups within the Department and their areas of responsibility:

<b>Planning and Development Group</b>	<ul style="list-style-type: none"><li>- steering and co-ordination of regional administration</li><li>- coordination of R&amp;D in the administrative branch</li><li>- matters related to the EU structural funds</li><li>- performance guidance</li></ul>
<b>Finance Unit</b>	<ul style="list-style-type: none"><li>- financial and action planning</li><li>- system of central government transfers and the municipal economy</li><li>- matters related to the Slot Machine Association</li></ul>
<b>Gender Equality Unit</b>	<ul style="list-style-type: none"><li>- gender equality policy and legislation</li><li>- promotion of gender mainstreaming in central government</li></ul>
<b>Administrative Services Group</b>	<ul style="list-style-type: none"><li>- projects to develop administration</li></ul>
<b>Real Estate and Office Services Group</b>	<ul style="list-style-type: none"><li>- premises and office services</li></ul>
<b>Information Management Unit</b>	<ul style="list-style-type: none"><li>- information management services</li><li>- registry, archive and library services</li></ul>





# Special units

## Advisory Staff Unit

The Unit assists and supports the work of the Permanent Secretary and co-ordinates the various tasks of the Departments and Units of the Ministry.

Esikuntayksikkö

- implements the Ministry's strategic planning,
- monitors implementation of the Government Programme, and
- develops legislation drafting.

## International Affairs Unit

The Unit develops, plans and co-ordinates international affairs within the Ministry's mandate.

Kansainvälisten asioiden yksikkö

- co-ordinates relevant activities particularly within the EU, in Nordic cooperation bodies, in UN bodies, at the Council of Europe and in the OECD, and
- is responsible for bilateral cooperation agreements between Finland and other countries in the field of social welfare and health care and their implementation.

## Preparedness Unit

The Unit has specialist expertise and provides guidance and development initiatives for social welfare and health care preparedness and response.

The Preparedness Unit

- develops, in cooperation with the Ministry's departments and units and with the agencies and institutions within the administrative branch, preparedness arrangements required for special situations under normal conditions and for emergency conditions, and
- maintains situational leadership and security arrangements.

## Information and Communication Unit

The Unit is in charge of and develops the internal and external information and communication functions of the Ministry, related work with interest groups, and opinion leadership.

The Information and Communication Unit

- presents an overview of the Ministry's objectives, strategies and action,
- supports the Ministry's internal cooperation, guidance within the Ministry's administrative branch and work with stakeholders,
- coordinates and promotes communication in the Ministry and its administrative branch,
- supports the communication functions of the Ministry's departments and special units, and
- develops and coordinates the Ministry's publications and online communications.

# Ombudsmen attached to the Ministry of Social Affairs and Health

## Office of the Ombudsman for Equality

The Ombudsman for Equality supervises compliance with the Act on Equality between Women and Men, in particular compliance with the prohibition on discrimination and discriminatory notices.

The Ombudsman promotes by means of initiatives, advice and instructions the fulfilment of the purpose of the Act and monitors the implementation of the equality between women and men in different sectors of society.

## Office of the Ombudsman for Children

The Ombudsman for Children promotes the realisation of the interests and rights of the child in cooperation with other authorities and with organisations and other similar actors in the branch.

The activities of the Ombudsman for Children are based on the UN Convention on the Rights of the Child.

The Ombudsman for Children does not decide on individual cases of taking children into care or of child custody..



# Advisory boards and committees attached to the Ministry of Social Affairs and Health

## **Within the purview of the Advisory Staff:**

- Advisory Board on Veterans' Affairs in Finland

## **Within the purview of the Administration and Planning Department:**

- Advisory Board for Health and Welfare in Emergency Conditions

## **Within the purview of the Insurance Department:**

- Advisory Board for Ageing and Pensioners' Affairs
- Traffic Accident Board
- Pharmaceuticals Pricing Board
- Expert Group of the Pharmaceuticals Pricing Board
- Patient Injuries Board
- Health Insurance Advisory Board
- Occupational Accidents Compensation Board
- Insurance Mediation Board
- Actuaries' Examination Board
- Environmental Insurance Board

**Within the purview of the Department for Social and Health Services:**

- Finnish Board of Inter-Country Adoption Affairs
- National Advisory Board on Social Welfare and Health Care Ethics
- Advisory Board for the Ombudsman for Children
- Advisory Board for Electronic Information Management in Social and Health Care
- Advisory Board for Health Care Professionals
- Advisory Committee on Private Social and Health Services
- Advisory Board on Early Childhood Education and Care

**Within the purview of the Department for Promotion of Welfare and Health:**

- Advisory Board for Biotechnology
- Board for Gene Technology
- Advisory Board for Public Health
- Advisory Committee on Chemicals
- Advisory Board on the Health and Welfare of Children and Young People
- Advisory Committee on Intoxicant and Temperance Affairs
- Advisory Board on Conciliation in Criminal Matters
- Advisory Committee for Social Welfare and Health Care
- Advisory Committee on Radiation Safety
- Advisory Board on Communicable Diseases
- Committee for Health-Enhancing Physical Activity
- Advisory Board on Occupational Health Care
- Advisory Board on Romani Affairs
- National Council on Disability
- Advisory Board for Rehabilitation

**Within the purview of gender equality matters:**

- Council for Gender Equality
- Gender Equality Board

### **Within the purview of the Department for Occupational Safety and Health:**

- Board for Blasters Training
- Board for Ratification of the Validity of Collective Agreements
- Advisory Committee on Occupational Safety and Health
- Advisory Committee on Preparation of Occupational Safety Regulations

### **Appeal boards**

The Ministry of Social Affairs and Health does not itself process appeals, objections or complaints. The Ministry supervises the work of the appeal boards and ensures that citizens' legal rights are respected in the appeal process.

**The Social Security Appeal Board** is the first appellate authority against decisions issued for instance by the Social Insurance Institution or workplace funds.

**The Unemployment Appeal Board** is the first appellate authority in matters concerning unemployment allowances, labour market support, membership of unemployment funds, student benefits in labour market oriented adult education, job alternation compensation and financial support for self-motivated education while unemployed, and also in matters concerning pay security and the Education and Severance Pay Act.

In matters concerning earnings-related pensions in the private sector, the appellate authority is the **Employee Pensions Appeal Board**.

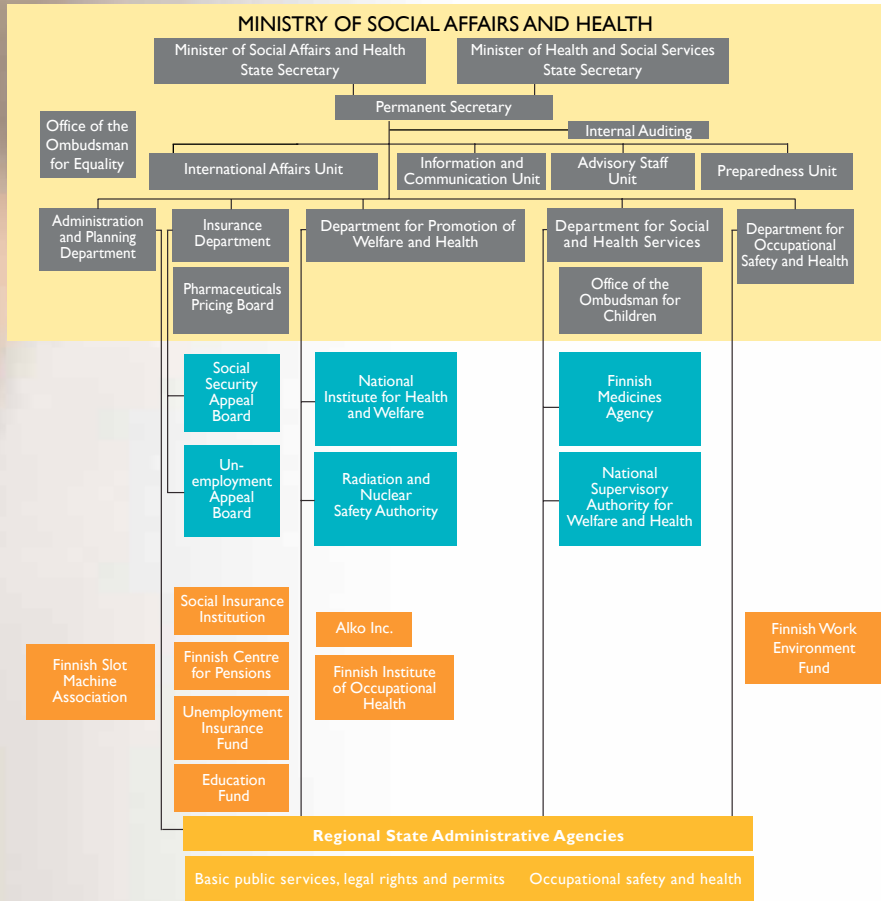
**The Occupational Accidents Appeal Board** processes appeals against decisions made by insurance companies in matters involving occupational accidents and occupational diseases.

**The Traffic Accident Board** is a body that issues statements and recommendations for application to unify compensation practices in matters involving traffic accidents.





## The Ministry of Social Affairs and Health and organisations in its administrative branch



# Organisations in the administrative branch of the Ministry of Social Affairs and Health

There are several independent agencies and institutions in the administrative branch of the Ministry of Social Affairs and Health which implement the social welfare and health care policy goals laid out by the Ministry and participate in Government Programme projects. Some of them produce research data for use in drafting legislation, formulating social and health policy and as a basis for decision-making. Some are also responsible for issuing licences and permits and for supervision.

A management team comprised of senior management representatives from the Ministry and its administrative branch coordinates the work of these agencies and institutions. The Ministry has a four-year performance agreement in place with the following agencies and institutions:

- Regional State Administrative Agencies  
(areas of responsibility: social welfare and health care, occupational safety and health)
- Finnish Medicines Agency (Fimea)
- Slot Machine Association
- National Supervisory Authority for Welfare and Health (Valvira)
- Social Security Appeal Board
- Finnish Radiation and Nuclear Safety Authority
- National Institute for Health and Welfare
- Finnish Institute of Occupational Health
- Unemployment Appeal Board

The content and implementation of the agreements are reviewed on an annual basis.

**The following are other bodies in the Ministry's administrative branch:**

- Alko Oy
- Finnish Centre for Pensions
- Social Insurance Institution
- Education Fund
- Finnish Work Environment Fund
- Unemployment Insurance Fund
- Financial Supervisory Authority

## Regional State Administrative Agencies

There are six Regional State Administrative Agencies in Finland; they manage the duties of the former State Provincial Offices, environmental permit agencies, regional environmental centres and occupational safety and health directorates as regards permits, monitoring and legal protection.

The regional authorities promote the exercise of fundamental rights and the implementation of legal protection, the availability of basic services, environmental protection, sustainable use of the environment, internal security and healthy and safe living and working environments in their respective regions.

## Finnish Medicines Agency (Fimea)

The duties of the Finnish Medicines Agency (Fimea) include pharmaceutical licensing and monitoring duties, R&D and producing and distributing pharmaceutical information to improve pharmaceutical services and the effectiveness of pharmacotherapy.

## Slot Machine Association

The Slot Machine Association operates gaming machines to collect funds for supporting Finnish NGOs in the area of social welfare and health care. The Slot Machine Association has a monopoly on gambling, slot machines, casino games and casino operations in Finland.

The Ministry of Social Affairs and Health guides and monitors the funding operations of the Slot Machine Association, including the preparation of distribution proposals and assistance plans, the payment of grants and the monitoring of how the grants are used.

## National Supervisory Authority for Welfare and Health (Valvira)

The National Supervisory Authority for Welfare and Health (Valvira) is the permit and supervisory authority in the social welfare and health care sector, guiding the Regional State Administrative Agencies and local authorities in the implementation of legislation pertaining to its sector and monitoring compliance with that legislation. Valvira guides and monitors the activities of social welfare and health care professionals and NGOs and deals with complaints in the sector in accordance with the division of duties with the Regional State Administrative Agencies.

The duties of Valvira further include monitoring that health care equipment and devices comply with requirements and promoting their safe use. In the area of alcohol administration, the duties of Valvira include issuing permits for alcohol sales, monitoring actors in the area and guiding other permit and guidance authorities in the area.

## Finnish Radiation and Nuclear Safety Authority

The aim of the Radiation and Nuclear Safety Authority is to protect people, the functions of society, the environment and future generations from the harmful effects of radiation.

The Authority supervises and monitors the country's nuclear power plants, nuclear materials and nuclear waste, and the use of radiation and radioactive substances in health care, industry, research and teaching. It also continuously monitors radiation levels in the environment.

## National Institute for Health and Welfare

The National Institute for Health and Welfare is a R&D institution whose purpose is to promote the wellbeing and health of the population, to prevent diseases and social problems and to develop social welfare and health care services. The Institute serves decision-makers in central and local government, actors in the sector, NGOs, the research community and ordinary citizens.

It is the official compiler of statistics in its sector and manages the collecting and leveraging of the information base in its domain. The Institute executes its remit through research, monitoring and evaluation, development, expert opinions, official duties and international cooperation.

## Finnish Institute of Occupational Health

The Finnish Institute of Occupational Health is a multidisciplinary research and expert organisation that promotes occupational health and safety and the wellbeing of employees. Through its research, training, specialist services and information provision, the Institute offers solutions for the needs of working life. Key partners include workplaces, occupational safety and health authorities, occupational health care practitioners, the occupational safety and health organisation at workplaces, universities, educational institutions and NGOs.



# Social security expenditure and funding

Social security is understood to cover social welfare and health care services and monetary benefits.

## Finland's social security expenditure was

- EUR 51.3 billion in 2009 (prognosis), and
- EUR 48.6 billion in 2008.

In 2008, social security expenditure amounted to 26.3% of GDP. This is expected to have increased to about 30.5% in 2009 because of a marked decrease in GDP and an increase in social security expenditure as a result of the recession. In recent years, Finland's social security expenditure as a percentage of GDP has been slightly lower than the EU average. On a per capita basis and adjusted for purchasing power, Finland's social security expenditure is more or less at the EU average.

## Social security expenditure consists mainly of:

- pension security,
- sickness benefits, and
- unemployment benefits; and also
- the portion of social welfare and health care service costs paid for out of public funds.

## Finland's social security expenditure is financed as follows (2008):

- 38% from employer contributions,
- 11% from contributions of the insured,
- 25% from central government funding, and
- 19% from local government funding.

The remaining 7% is covered with revenues from social security funds. Social security expenditure statistics in Finland are compiled by the National Institute for Health and Welfare.

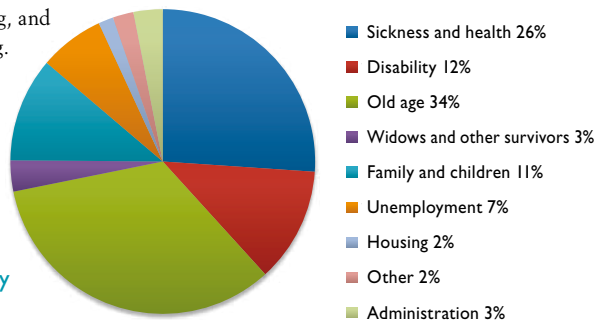


Figure 1. Breakdown of social security expenditure by main category, 2008.

Figure 2. Social security expenditure funding in Finland (2008).

- Central government 25%
- Local government 19%
- Employers 38%
- The insured 11%
- Other revenue 7%

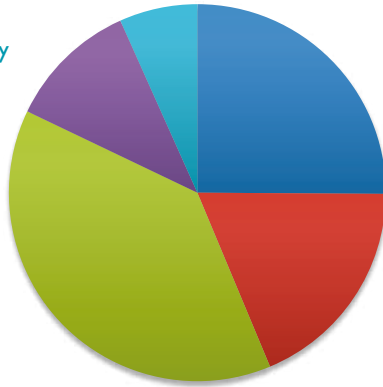
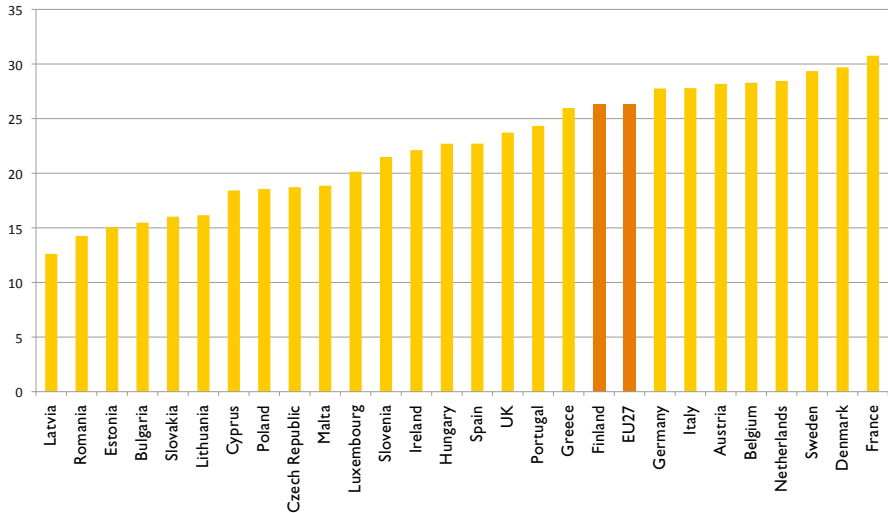


Figure 3. Social security expenditure as a percentage of GDP in certain EU Member States (2008).



# Service expenditure and financing

Finland's social welfare and health care services are mainly financed from public funds. The central government pays municipalities central government transfers to cover social welfare and health care expenditure. The amount paid to a given municipality depends on the population, demographic structure and unemployment rate of the municipality, and a number of other factors.

## Local government expenditure and financing

In 2009, social welfare and health care expenditure in local government came to about EUR 18.6 billion, accounting for 55% of total local government expenditure.

### **The largest individual items were:**

- specialised medical care, EUR 5.1 billion,
- services for older people and people with disabilities, EUR 4.0 billion,
- primary health care, EUR 3.8 billion, and
- children's day care and child care allowances, EUR 2.5 billion.

Central government transfers covered nearly 35% of the statutory expenditure of local government in 2009. Client and patient fees covered about 6% of social welfare and health care expenditure. The remainder was covered out of local government revenue.

### **In 2009, client and patient fees covered expenditure as follows:**

- 14% of children's day care,
- 17% of institutional care for older people,
- 14% of home services,
- 3% of primary health care, and
- 17% of dental care.



## Health care expenditure and financing

In 2008, Finland's health care expenditure amounted to EUR 15.5 billion, or 8.4% of GDP. This remained below the OECD average.

### **The largest individual items were:**

- specialised medical care 33%,
- primary health care 18%,
- dental care 6%,
- occupational health care and student health care 4%,
- pharmaceuticals 14%,
- health insurance compensation for private health care 6%,
- institutional care for older people 5%,
- investments 5%, and
- other 8%.

### **Health care expenditure financing in 2008 was made up as follows:**

- local government 35%,
- central government 24%,
- statutory health insurance 15%,
- households 19%, and
- other private sources (e.g. insurance companies) 6%.

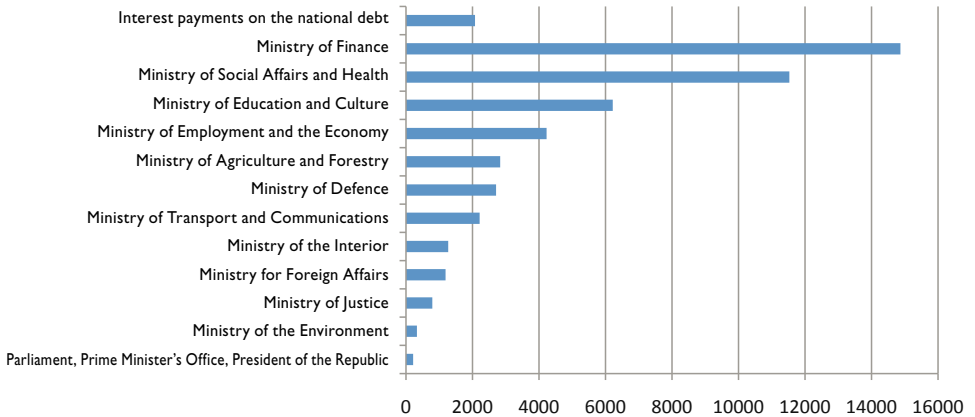


Figure 4. Central government budget expenditure by main title in 2010, total EUR 50,474 million.

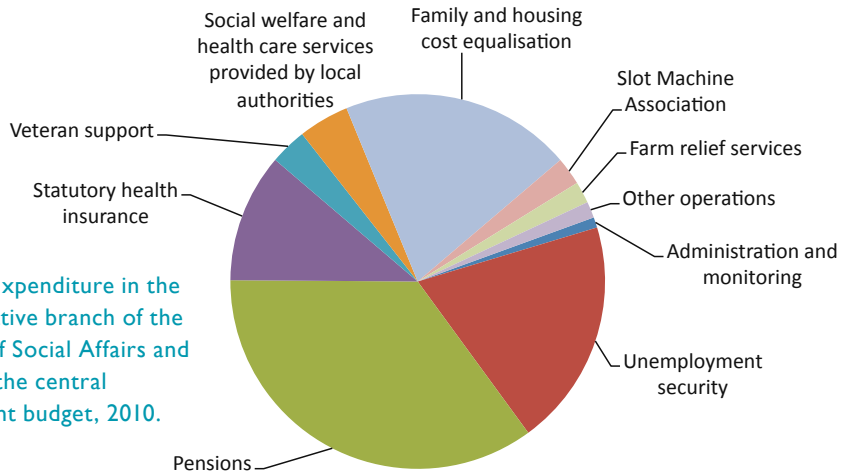


Figure 5. Expenditure in the administrative branch of the Ministry of Social Affairs and Health in the central government budget, 2010.



## MINISTRY OF SOCIAL AFFAIRS AND HEALTH

Tel. +358 9 16001 (Government switchboard)

Postal address: PO Box 33, FIN-00023 Government

E-mail: [firstname.lastname@stm.fi](mailto:firstname.lastname@stm.fi)

This brochure can be downloaded from the Ministry of Social Affairs and Health website:

[www.stm.fi/en/publications](http://www.stm.fi/en/publications)

E-mail ordering service

Place an e-mail order for the Ministry's most recent

- publications
- bulletins and online news
- Focus articles
- municipal information bulletins

Place your e-mail order at:

[www.stm.fi/tilauspalvelu](http://www.stm.fi/tilauspalvelu)

ISBN 978-952-00-3322-4 (pb)



9 789520 033224