



Employment Bulletin

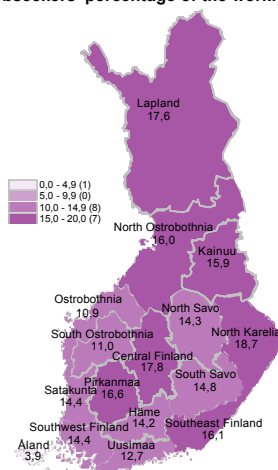
July 2016



TYÖ- JA ELINKEINOMINISTERIÖ
ARBETS- OCH NÄRINGSMINISTERIET
MINISTRY OF EMPLOYMENT AND THE ECONOMY

In July, the number of unemployed jobseekers was 378,400

Unemployed jobseekers' percentage of the workforce by ELY centre



AE Employment Service Statistics / Ministry of Economic Affairs and Employment, Employment Service Statistics

A total of 378,400 unemployed jobseekers were registered at the Employment and Economic Development Offices at the end of July. This is 3,200 less than a year earlier. The number of unemployed jobseekers increased by 12,300 from the previous month. Unemployed jobseekers accounted for 14.4% of the labour force which is 0.1 percentage points less than a year ago. The figures are from the Employment Service Statistics of the Ministry of Economic Affairs and Employment.

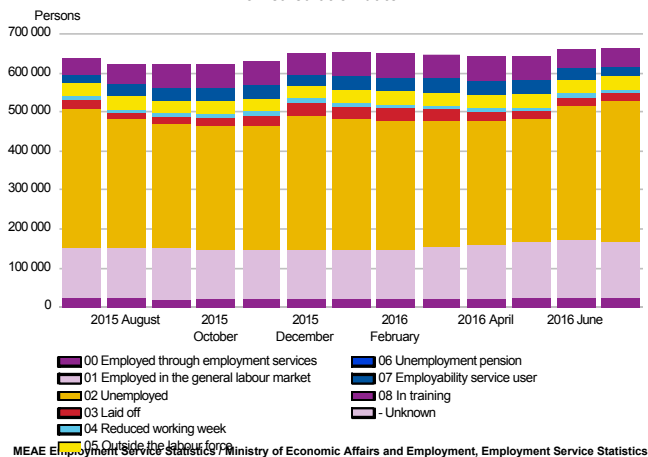
Trends:

- The total number of jobseekers increased
- The number of unemployed jobseekers decreased by 3,000 compared to the year before
- Services included in the activation rate had 2,000 more people than a year ago
- 3,000 new job vacancies more compared to last year



All jobseekers

**Jobseekers by group
on calculation date**



MEAE Employment Service Statistics, Ministry of Economic Affairs and Employment, Employment Service Statistics

The total number of jobseekers increased

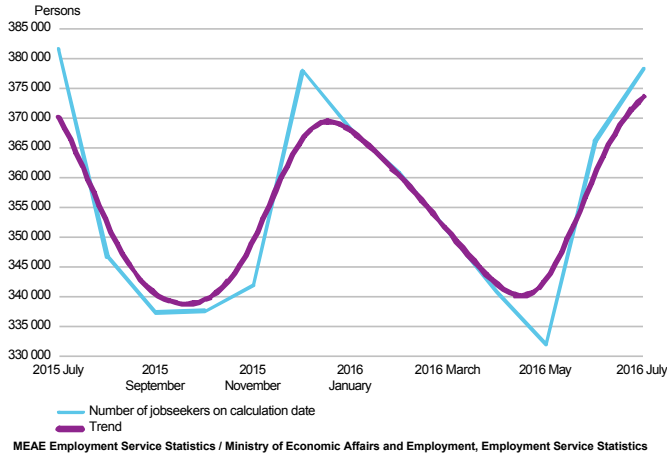
At the end of July, the number of unemployed jobseekers registered at the Employment and Economic Development Offices totalled 664,900, up 25,200 on the previous year. Of the jobseekers, 334,000 were men and 331,000 were women. Compared to the situation a year ago, the number of men increased by 9,500 and the number of women by 15,700.

Of the jobseekers, 170,400 were employed, 147,700 of them were on the open labour market and 22,700 were employed through the services of the employment and economic development administration. The number of jobseekers outside the labour force was 106,100, of whom 26,200 were in services promoting employment and 46,200 in training. Of the jobseekers, 378,400 were unemployed jobseekers, which is 3,200 less than the year before. In July, 21,600 of unemployed jobseekers were fully laid off, which is 1,000 more than in June. Since July last year, the number of people fully laid off has decreased by 2,100. Furthermore, jobseekers on a reduced working week numbered 10,000, representing an increase of 1,800 from the year before.



Unemployed jobseekers

UNEMPLOYED JOBSEEKERS
monthly and trend



MEAE Employment Service Statistics / Ministry of Economic Affairs and Employment, Employment Service Statistics

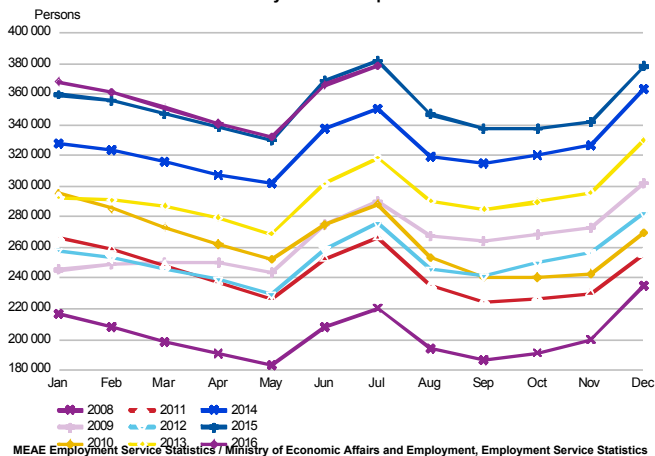
The number of unemployed jobseekers decreased in July

At the end of July, the number of unemployed jobseekers registered at the Employment and Economic Development Offices totalled 378,400, down 3,200 on the previous year. Compared with June, the number of unemployed jobseekers increased by 12,300.

In July, 21,600 of unemployed jobseekers were fully laid off, which is 1,000 more than in June. Since July last year, the number of people fully laid off has decreased by 2,100.

The number of foreign citizens among unemployed jobseekers totalled 41,000, up 1,000 from July a year ago. Of these foreign unemployed jobseekers, EU/EEA citizens accounted for 11,100 at the end of July, up 200 from the year before.

UNEMPLOYED JOBSEEKERS
month by month comparison

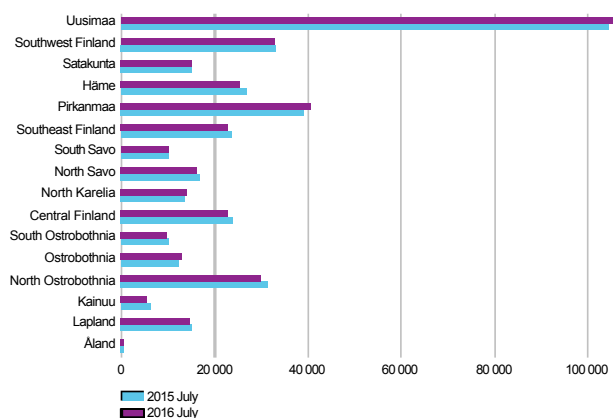


MEAE Employment Service Statistics / Ministry of Economic Affairs and Employment, Employment Service Statistics



Unemployed jobseekers by region

UNEMPLOYED JOBSEEKERS
by Centre for Economic Development, Transport and the Environment (ELY)



MEAE Employment Service Statistics / Ministry of Economic Affairs and Employment, Employment Service Statistics

Unemployment decreased in eleven areas

Compared to the same period in the previous year, the number of unemployed jobseekers decreased in July in the areas of eleven Centres for Economic Development, Transport and the Environment (ELY Centres); the most in Kainuu (-11%), Häme (-5%), North Ostrobothnia (-5%) and Central Finland (-4%). Unemployment increased the most in Ostrobothnia (7%), Pirkanmaa (4%), and Uusimaa (2%).

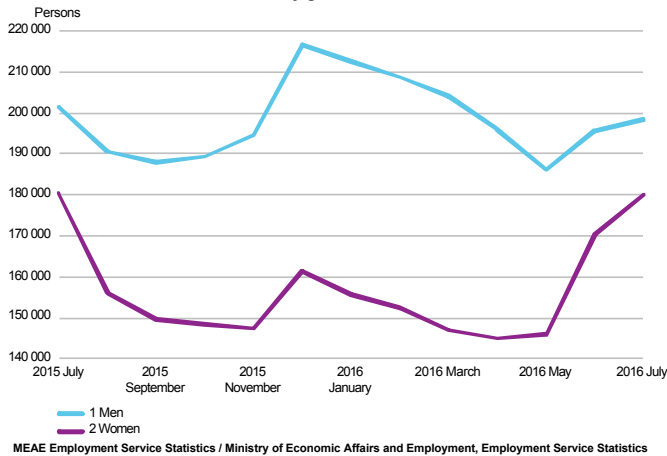
Unemployed jobseekers and jobs vacant in Employment and Economic Development Office by ELY centre

| ELY centre | Unemployed jobseekers | | | Change | | Of the fully laid off | Unemployed jobseekers' percentage of the workforce | Jobs vacant | | | Change | |
|----------------------|-----------------------|----------------|----------------|---------------|-----------|-----------------------|--|---------------|---------------|---------------|--------------|----------|
| | Jul 2016 | Jun 2016 | Jul 2015 | Jul 2016 | Jul 2015 | | | Jul 2016 | Jun 2016 | Jul 2015 | Jul 2016 | Jul 2015 |
| Uusimaa | 106 152 | 102 018 | 104 514 | 1 638 | 2 | 4 268 | 12,7 | 11 886 | 11 528 | 10 471 | 1 415 | 14 |
| Southwest Finland | 32 828 | 31 644 | 33 225 | -397 | -1 | 2 102 | 14,4 | 2 269 | 2 056 | 1 944 | 325 | 17 |
| Satakunta | 14 866 | 14 429 | 15 007 | -141 | -1 | 1 281 | 14,4 | 1 132 | 952 | 780 | 352 | 45 |
| Häme | 25 187 | 24 430 | 26 617 | -1 430 | -5 | 1 170 | 14,2 | 1 887 | 1 603 | 1 514 | 373 | 25 |
| Pirkanmaa | 40 539 | 39 228 | 39 155 | 1 384 | 4 | 2 982 | 16,6 | 2 999 | 3 000 | 2 987 | 12 | 0 |
| Southeast Finland | 22 902 | 22 592 | 23 453 | -551 | -2 | 1 160 | 16,1 | 1 137 | 1 083 | 1 368 | -231 | -17 |
| South Savo | 9 901 | 9 665 | 10 207 | -306 | -3 | 529 | 14,8 | 797 | 925 | 728 | 69 | 9 |
| North Savo | 16 162 | 15 748 | 16 700 | -538 | -3 | 1 068 | 14,3 | 1 441 | 1 330 | 1 404 | 37 | 3 |
| North Karelia | 13 792 | 13 383 | 13 773 | 19 | 0 | 841 | 18,7 | 450 | 606 | 638 | -188 | -29 |
| Central Finland | 22 845 | 22 202 | 23 844 | -999 | -4 | 1 119 | 17,8 | 1 212 | 1 312 | 1 083 | 129 | 12 |
| South Ostrobothnia | 9 665 | 9 187 | 9 910 | -245 | -2 | 960 | 11,0 | 666 | 655 | 661 | 5 | 1 |
| Ostrobothnia | 12 850 | 12 034 | 12 047 | 803 | 7 | 1 321 | 10,9 | 909 | 903 | 989 | -80 | -8 |
| North Ostrobothnia | 29 964 | 28 849 | 31 454 | -1 490 | -5 | 1 711 | 16,0 | 1 844 | 1 695 | 1 642 | 202 | 12 |
| Kainuu | 5 388 | 5 365 | 6 045 | -657 | -11 | 269 | 15,9 | 360 | 359 | 351 | 9 | 3 |
| Lapland | 14 608 | 14 615 | 14 953 | -345 | -2 | 822 | 17,6 | 1 382 | 1 196 | 1 489 | -107 | -7 |
| Åland | 587 | 534 | 536 | 51 | 10 | 7 | 3,9 | 169 | 207 | 243 | -74 | -30 |
| Abroad | 163 | 163 | 156 | 7 | 4 | 21 | . | 1 928 | 1 848 | 1 644 | 284 | 17 |
| WHOLE COUNTRY | 378 399 | 366 086 | 381 596 | -3 197 | -1 | 21 631 | 14,4 | 32 468 | 31 258 | 29 936 | 2 532 | 8 |



Unemployed jobseekers by gender and age-group

**UNEMPLOYED JOBSEEKERS
by gender**

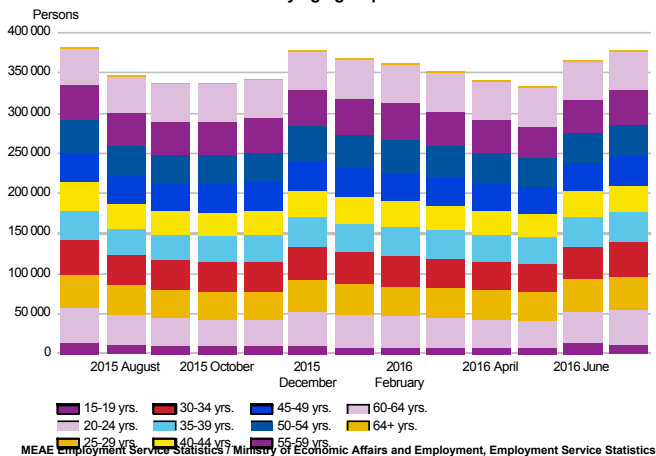


MEAE Employment Service Statistics / Ministry of Economic Affairs and Employment, Employment Service Statistics

Unemployment decreased among men

Of the unemployed jobseekers, 198,300 (52%) were men and 180,100 (48%) were women, indicating an increase of 2,700 for men and an increase of 9,600 for women from the figures for June. Compared with July a year ago, the unemployment among men decreased by 3,000 (-1%) and among women by 200 (-0%).

**UNEMPLOYED JOBSEEKERS
by age group**



MEAE Employment Service Statistics / Ministry of Economic Affairs and Employment, Employment Service Statistics

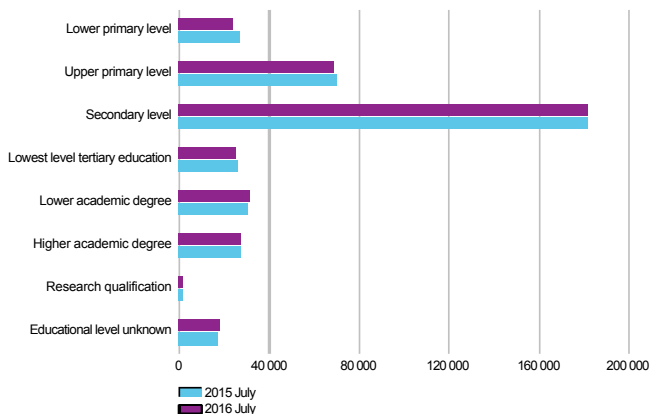
Unemployment decreased in almost all age groups

At the end of July, unemployed jobseekers under 25 years of age numbered 54,800 representing a decrease of 2,200 from July a year ago. Youth unemployment increased from June by 600. For those under 20, the number of unemployed was 13,100. Among those over 50, the number of unemployed was 131,200, representing an increase of 800 on the year before. Among those over 55, the number of unemployed was 91,600, representing an increase of 1,200 on the year before.



Unemployed jobseekers by levels of education and occupational group

UNEMPLOYED JOBSEEKERS
by level of education

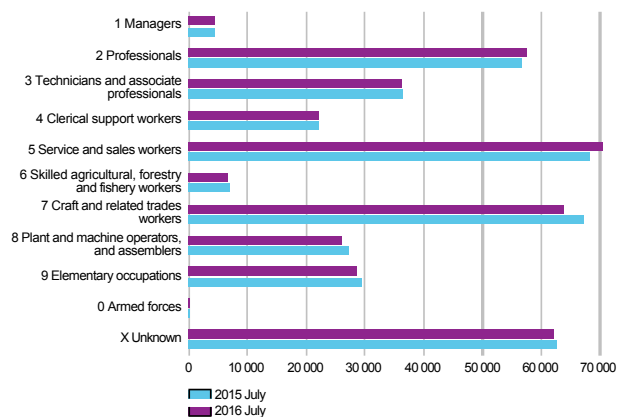


MEAE Employment Service Statistics / Ministry of Economic Affairs and Employment, Employment Service Statistics

Unemployment increased slightly among those with a higher level of education

Examined by level of education, the unemployment decreased from July of last year among those with lower level basic qualifications (-12%), higher level basic qualifications (-2%) and lowest level of tertiary education (-2%). Unemployment grew the most among those with doctorate or equivalent level tertiary education (5%), lower-degree level tertiary education (3%) and higher-degree level tertiary education (2%).

UNEMPLOYED JOBSEEKERS
by occupational group

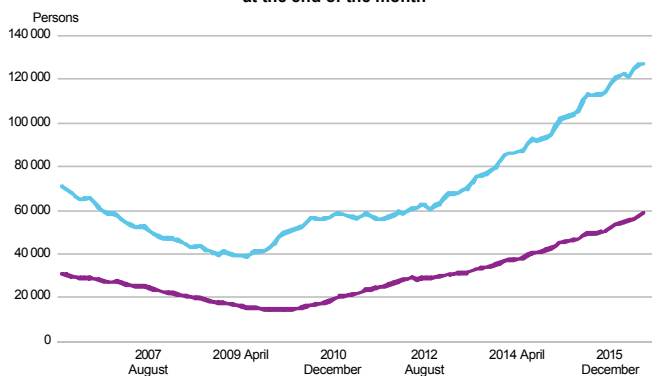


MEAE Employment Service Statistics / Ministry of Economic Affairs and Employment, Employment Service Statistics

Unemployment decreased in eight occupational groups

Examined by occupation, unemployment decreased in eight groups from July of last year; the most in the groups of construction, repair and manufacturing workers (-3,400), process and transport workers (-1,000) and other workers (-800). Consequently, unemployment grew the most in the groups of service and sales personnel (2,200) and specialised experts (700).

LONG-TERM UNEMPLOYED
at the end of the month



Long-term unemployment continued to grow

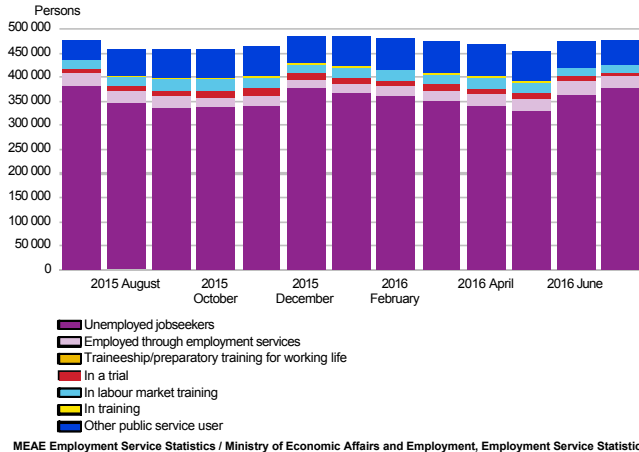
At the end of July, the number of long-term unemployed who had been unemployed without interruption for more than a year amounted to 127,200, up 14,100 on the previous year. Of the long-term unemployed, 72,800 were men and 54,300 were women. The number of men increased by 7,600 (12%) from the previous year and the number of women by 6,500 (14%). Long-term unemployed who had been unemployed without interruption for more than two years numbered 58,800, which is 9,500 more than a year ago.



Services

BROAD UNEMPLOYMENT

i.e. unemployed jobseekers and employment services users



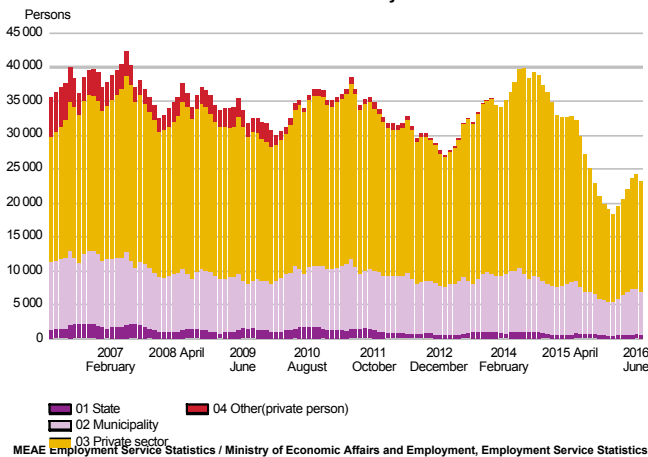
The number of persons covered by services remained almost unchanged

At the end of July, the number of persons covered by services included in the activation rate amounted to 99,400, up 1,800 on the previous year. Compared with June, the number decreased by 8,600. The activation rate at the end of July was 20.8%, which is 0.4 percentage points higher than a year earlier. In all, 3.6% of the labour force was covered by these services.

Of those covered by services, the number of men was 50,000, up 1,100 on the previous year. The number of women covered by these services was 49,400, up 700 on the previous year.

Broad unemployment, or the total number of unemployed jobseekers and those covered by services, was 477,800 at the end of July. This is 1,400 less than a year earlier. The decrease in broad unemployment was due to the decrease in the number of unemployed jobseekers.

EMPLOYED THROUGH EMPLOYMENT SERVICES at the end of the month by sector



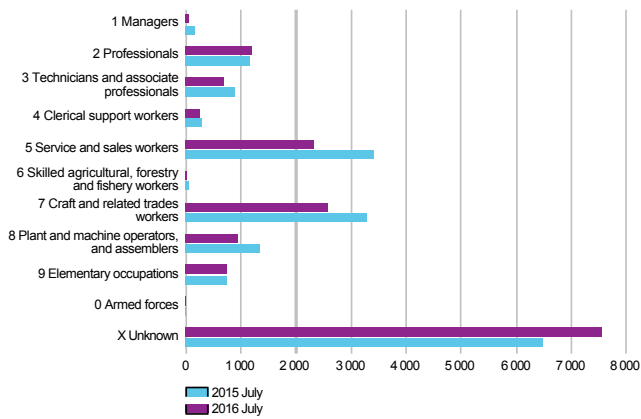
The number of placements decreased in government and the private sector

At the end of July, the number of persons claiming pay subsidies, employed by the State or receiving start-up grants totalled 23,200, which is 3,800 less than the year before. Of those employed, 3% were in government jobs, 27% in local government jobs and 70% in the private sector. Since July of the year before, the number of placements has decreased by 14% in government jobs and by 19% in the private sector, while the number of placements has increased by 1% in local government jobs. Of those employed, 56% were men. Placements for men decreased by 1,600, and those for women by 2,200 from the previous year.



Labour market training, training and self-motivated studies

PERSONS IN LABOUR MARKET TRAINING
in target profession at the end of the month



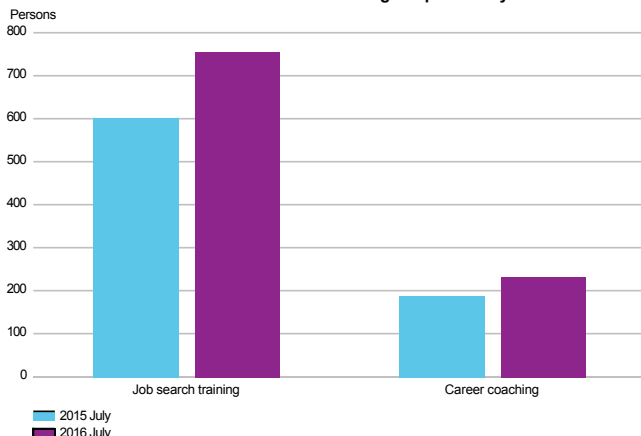
MEAE Employment Service Statistics / Ministry of Economic Affairs and Employment, Employment Service Statistics

Decrease in labour market training

At the end of July, labour market training was attended by 16,300 students, down 1,400 on the previous year. Of the students, 8,600 were men and 7,800 were women. The number of both men and women decreased by 700 from the previous year. During July, 500 new students began labour market training, which is almost as many as a year ago.

Based on target occupation, in July the largest subgroup within the category of 'unknown' were people in integration training (6,100), which is 800 more than the year before. In July, the number of people without a specified target occupation was 900, which is 100 less than in July last year.

IN TRAINING
at the end of the month and during the previous year



MEAE Employment Service Statistics / Ministry of Economic Affairs and Employment, Employment Service Statistics

The number of persons in training increased

At the end of July, 1,000 persons were in training, which is 200 more than the year before. Of those in training, both men and women were 500. Work and training trials had 200 participants, which is almost as many as a year ago at the same time. The number of participants in job search training increased by 200 compared to July last year.

IN SELF-MOTIVATED STUDIES
in person's profession at the end of the month



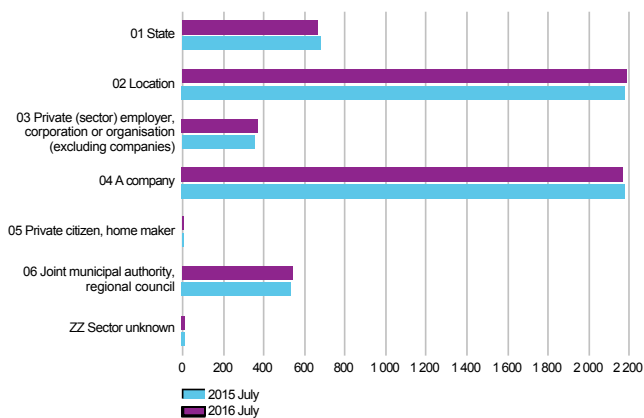
The number of people in self-motivated study increased from the previous year

Self-motivated studies supported by unemployment benefits were attended by a total of 26,800 people, representing an increase of 4,100 on the year before. The number of men receiving unemployment benefits for studies was 10,600, up 1,800 on the previous year. Among women, the number was 16,100, representing an increase of 2,300 on the year before. Occupation was undetermined in case of 4,600 persons in the group of 'unknown', up 700 on the previous year.



Job alternation, rehabilitative work and trials

AS A JOB ALTERNATION SUBSTITUTE
at the end of the month and during the previous year by sector



MEAE Employment Service Statistics / Ministry of Economic Affairs and Employment, Employment Service Statistics

The number of job alternation substitutes was the same as the year before

A total of 5,900 persons were job alternation substitutes at the end of July, which is the same number as the year earlier. Of the substitutes, 2,000 were men and 4,000 women, which correspond with the numbers of July last year.

REHABILITATIVE WORK ACTIVITIES
at the end of the month and during the previous year

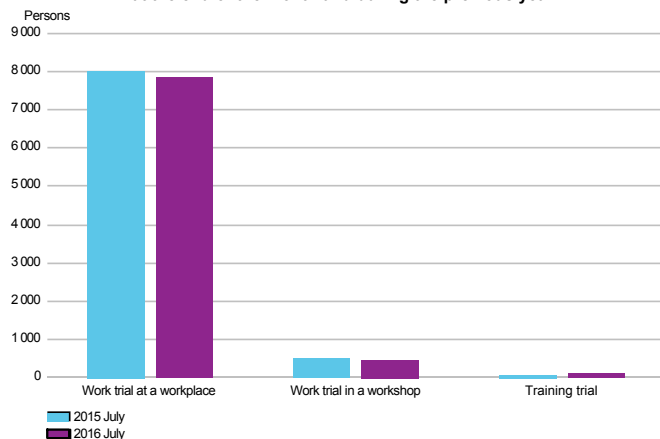


MEAE Employment Service Statistics / Ministry of Economic Affairs and Employment, Employment Service Statistics

More participants in rehabilitative work activities than in the previous year

A total of 17,700 persons participated in rehabilitative work activities at the end of July, which is 2,900 more than a year earlier. Of the participants 10,700 were men and 6,900 were women. The number of men increased by 1,700 from the year before, and the number of women by 1,200.

IN TRIALS
at the end of the month and during the previous year



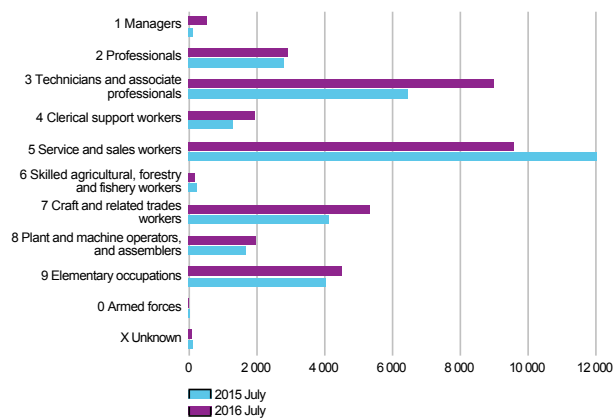
The number of persons in trials decreased slightly

Work and training trials had a total of 8,500 participants at the end of July, which is almost 200 less than the year before. Of the participants, 4,600 were men and 3,900 were women. Placements for men decreased by 200, and those for women increased by 100.



Jobs vacant

NEW JOB VACANCIES
during the month and during the previous year



MEAE Employment Service Statistics / Ministry of Economic Affairs and Employment, Employment Service Statistics

Increase in the number of new vacancies

The number of new vacancies reported to Employment and Economic Development Offices during July totalled 36,000, which is 3,000 more than in July of the previous year. In all, the number of unfilled vacancies at Employment and Economic Development Offices amounted to 67,800 in July, which is 6,600 more than a year ago. A total of 8,200 of these vacancies were filled during July, 3,700 of them through Employment and Economic Development Offices. The number of vacancies remaining unfilled at the end of July was 32,500, up 2,500 on the previous year.

The number of new vacancies had increased for seven occupational groups; the increase was the highest in the groups of skilled workers (2,500), construction, repair and manufacturing workers (1,200) office and customer service workers (600) and other workers (500). The number of new job vacancies had decreased in four occupational groups; the most in the group of service and sales personnel (-2,500).



Summary table

EMPLOYMENT SITUATION AT THE END OF 2016 JULY (I) AND
ACTIVITIES OF EMPLOYMENT AND ECONOMIC DEVELOPMENT OFFICES DURING JULY (II)
WHOLE COUNTRY

| I EMPLOYMENT SITUATION AT THE END OF MONTH | Jul-16 | Jul-15 | CHANGE NUMBER | CHANGE % |
|---|----------------|----------------|------------------|--------------|
| A. JOBSEEKERS | | | | |
| 1. Unemployed jobseekers | 378 399 | 381 596 | -3 197 | -0,8 |
| of whom fully laid off | 21 631 | 23 759 | -2 128 | -9,0 |
| 2. On reduced working week | 9 964 | 8 192 | 1 772 | 21,6 |
| 3. Those who have work | 170 410 | 151 106 | 19 304 | 12,8 |
| of whom in the general labour market | 147 748 | 126 795 | 20 953 | 16,5 |
| of whom employed through employment services | 22 662 | 24 311 | -1 649 | -6,8 |
| 4. Persons outside the labour force | 106 138 | 98 788 | 7 350 | 7,4 |
| of whom in services promoting employment | 26 230 | 23 385 | 2 845 | 12,2 |
| of whom in training | 46 206 | 41 724 | 4 482 | 10,7 |
| 5. On unemployment pension | 0 | 62 | -62 | -100,0 |
| 1-5 Total of jobseekers | 664 911 | 639 744 | 25 167 | 3,9 |
| B. LABOUR DEMAND | | | | |
| 1. Jobs vacant | 32 468 | 29 936 | 2 532 | 8,5 |
| of those notified for over a month | 12 105 | 12 119 | -14 | -0,1 |
| of those notified for over 2 months | 5 477 | 5 049 | 428 | 8,5 |
| C. PARTICIPATING IN SERVICES | | | | |
| 1. Employed by the State | 661 | 766 | -105 | -13,7 |
| 2. Employed by municipalities | 6 213 | 6 154 | 59 | 1,0 |
| 3. Employed by the private sector | 16 375 | 20 105 | -3 730 | -18,6 |
| 1-3 Total number of employed people | 23 249 | 27 025 | -3 776 | -14,0 |
| 4. Labour market training | 16 330 | 17 737 | -1 407 | -7,9 |
| 5. Training | 986 | 788 | 198 | 25,1 |
| 6. Engaged in work/training trials | 8 452 | 8 613 | -161 | -1,9 |
| 7. As a job alternation substitute | 5 947 | 5 937 | 10 | 0,2 |
| 8. Rehabilitative work | 17 656 | 14 784 | 2 872 | 19,4 |
| 9. Self-motivated studies supported by unemployment benefit | 26 751 | 22 672 | 4 079 | 18,0 |
| 1-9 Total number of people participating in services | 99 371 | 97 556 | 1 815 | 1,9 |
| D. STRUCTURE OF UNEMPLOYMENT | | | | |
| 1. Unemployed women | 180 084 | 180 302 | -218 | -0,1 |
| 2. Unemployed men | 198 315 | 201 294 | -2 979 | -1,5 |
| 3. Under 25 years old | 54 827 | 57 048 | -2 221 | -3,9 |
| 4. Over 50 years old | 131 241 | 130 427 | 814 | 0,6 |
| 5. Unemployed over a year | 127 150 | 113 055 | 14 095 | 12,5 |
| 6. Foreign unemployed | 40 958 | 39 926 | 1 032 | 2,6 |
| E. UNEMPLOYMENT SECURITY | | | | |
| 1. Unemployed members of employees' unemployment funds | 157 024 | 161 856 | -4 832 | -3,0 |
| II EMPLOYMENT SITUATION DURING THE MONTH | | | | |
| 1. Unemployed jobseekers | 400 676 | 403 166 | -2 490 | -0,6 |
| 2. Other jobseekers | 280 634 | 252 864 | 27 770 | 11,0 |
| 1-2 Total number of jobseekers | 681 310 | 656 030 | 25 280 | 3,9 |
| 3. Vacancies during a month | 67 775 | 61 180 | 6 595 | 10,8 |
| New vacancies during a month | 35 994 | 32 960 | 3 034 | 9,2 |
| Vacancies filled during a month | 8 225 | 9 370 | -1 145 | -12,2 |
| of those filled with job-seekers at the Employment Service | 3 665 | 4 410 | -745 | -16,9 |
| 4. Started spell of unemployment | 42 251 | 43 571 | -1 320 | -3,0 |
| 5. Completed spell of unemployment | 37 060 | 29 693 | 7 367 | 24,8 |
| 6. New jobs found through employment services | 2 533 | 1 685 | 848 | 50,3 |
| 7. New entrants to labour market training | 514 | 560 | -46 | -8,2 |



Foreigners' summary table

FOREIGNERS' EMPLOYMENT SITUATION AT THE END OF 2016 JULY (I) AND
ACTIVITIES OF EMPLOYMENT AND ECONOMIC DEVELOPMENT OFFICES DURING JULY (II)
WHOLE COUNTRY

| I EMPLOYMENT SITUATION AT THE END OF MONTH | Jul-16 | Jul-15 | CHANGE NUMBER | CHANGE % |
|---|---------------|---------------|------------------|--------------|
| A. JOBSEEKERS | | | | |
| 1. Unemployed jobseekers | 40 958 | 39 926 | 1 032 | 2,6 |
| of whom fully laid off | 1 386 | 1 631 | -245 | -15,0 |
| 2. On reduced working week | 366 | 317 | 49 | 15,5 |
| 3. Those who have work | 14 652 | 12 158 | 2 494 | 20,5 |
| of whom in the general labour market | 12 941 | 10 323 | 2 618 | 25,4 |
| of whom employed through employment services | 1 711 | 1 835 | -124 | -6,8 |
| 4. Persons outside the labour force | 19 167 | 16 980 | 2 187 | 12,9 |
| of whom in services promoting employment | 3 406 | 3 018 | 388 | 12,9 |
| of whom in training | 12 473 | 10 636 | 1 837 | 17,3 |
| 5. On unemployment pension | 0 | .. | .. | .. |
| 1-5 Total of jobseekers | 75 143 | 69 383 | 5 760 | 8,3 |
| C. PARTICIPATING IN SERVICES | | | | |
| 1. Employed by the State | 17 | 13 | 4 | 30,8 |
| 2. Employed by municipalities | 383 | 372 | 11 | 3,0 |
| 3. Employed by the private sector | 1 156 | 1 414 | -258 | -18,2 |
| 1-3 Total number of employed people | 1 556 | 1 799 | -243 | -13,5 |
| 4. Labour market training | 7 181 | 6 674 | 507 | 7,6 |
| 5. Training | 53 | 36 | 17 | 47,2 |
| 6. Engaged in work/training trials | 2 240 | 2 106 | 134 | 6,4 |
| 7. As a job alternation substitute | 108 | 119 | -11 | -9,2 |
| 8. Rehabilitative work | 1 082 | 806 | 276 | 34,2 |
| 9. Self-motivated studies supported by unemployment benefit | 5 741 | 4 273 | 1 468 | 34,4 |
| 1-9 Total number of people participating in services | 17 961 | 15 813 | 2 148 | 13,6 |
| D. STRUCTURE OF UNEMPLOYMENT | | | | |
| 1. Unemployed women | 21 562 | 21 196 | 366 | 1,7 |
| 2. Unemployed men | 19 396 | 18 730 | 666 | 3,6 |
| 3. Under 25 years old | 3 627 | 3 609 | 18 | 0,5 |
| 4. Over 50 years old | 9 193 | 8 839 | 354 | 4,0 |
| 5. Unemployed over a year | 10 476 | 9 298 | 1 178 | 12,7 |
| E. UNEMPLOYMENT SECURITY | | | | |
| 1. Unemployed members of employees' unemployment funds | 7 031 | 6 702 | 329 | 4,9 |
| II EMPLOYMENT SITUATION DURING THE MONTH | | | | |
| 1. Unemployed jobseekers | 42 909 | 41 770 | 1 139 | 2,7 |
| 2. Other jobseekers | 33 106 | 28 555 | 4 551 | 15,9 |
| 1-2 Total number of jobseekers | 76 015 | 70 325 | 5 690 | 8,1 |
| 4. Started spell of unemployment | 4 708 | 4 402 | 306 | 7,0 |
| 5. Completed spell of unemployment | 3 446 | 2 249 | 1 197 | 53,2 |
| 6. New jobs found through employment services | 178 | 102 | 76 | 74,5 |
| 7. New entrants to labour market training | 272 | 316 | -44 | -13,9 |



Regional table

UNEMPLOYED JOBSEEKERS AND JOBS VACANT BY ELY CENTRE AT THE END OF 2016 JULY WHOLE COUNTRY

| ELY centre | Workforce | Unemployed jobseekers | | | | | | Unemployed over a year | Disabled and chron. ill | Jobs vacant | |
|--------------------|------------------|-----------------------|----------------|----------------|----------------|--------------------|--------------------|------------------------|-------------------------|---------------|-------------------|
| | | % of workforce | Total | Men | Women | Under 20 years old | Under 25 years old | | | | Over 50 years old |
| Uusimaa | 836 335 | 12,7 | 106 152 | 55 023 | 51 129 | 2 733 | 12 468 | 35 292 | 40 958 | 9 148 | 11 886 |
| Southwest Finland | 227 264 | 14,4 | 32 828 | 16 938 | 15 890 | 1 249 | 4 758 | 10 798 | 10 404 | 4 010 | 2 269 |
| Satakunta | 102 883 | 14,4 | 14 866 | 7 740 | 7 126 | 478 | 2 124 | 5 751 | 4 457 | 1 736 | 1 132 |
| Häme | 177 204 | 14,2 | 25 187 | 13 002 | 12 185 | 838 | 3 547 | 9 356 | 8 999 | 3 771 | 1 887 |
| Pirkanmaa | 244 147 | 16,6 | 40 539 | 21 468 | 19 071 | 1 330 | 6 212 | 13 209 | 14 628 | 4 262 | 2 999 |
| Southeast Finland | 141 865 | 16,1 | 22 902 | 12 060 | 10 842 | 785 | 3 324 | 8 947 | 7 468 | 2 721 | 1 137 |
| South Savo | 66 704 | 14,8 | 9 901 | 5 397 | 4 504 | 419 | 1 462 | 4 089 | 3 129 | 1 907 | 797 |
| North Savo | 113 195 | 14,3 | 16 162 | 8 720 | 7 442 | 682 | 2 628 | 6 148 | 4 921 | 2 473 | 1 441 |
| North Karelia | 73 784 | 18,7 | 13 792 | 7 336 | 6 456 | 625 | 2 184 | 5 291 | 4 078 | 1 695 | 450 |
| Central Finland | 128 214 | 17,8 | 22 845 | 12 058 | 10 787 | 925 | 3 800 | 8 208 | 8 535 | 2 554 | 1 212 |
| South Ostrobothnia | 88 057 | 11,0 | 9 665 | 5 089 | 4 576 | 402 | 1 625 | 3 368 | 1 975 | 1 486 | 666 |
| Ostrobothnia | 118 147 | 10,9 | 12 850 | 6 713 | 6 137 | 472 | 2 061 | 3 993 | 3 041 | 1 420 | 909 |
| North Ostrobothnia | 186 732 | 16,0 | 29 964 | 15 296 | 14 668 | 1 376 | 5 620 | 8 527 | 8 754 | 3 543 | 1 844 |
| Kainuu | 33 822 | 15,9 | 5 388 | 2 986 | 2 402 | 250 | 873 | 2 310 | 1 595 | 831 | 360 |
| Lapland | 83 209 | 17,6 | 14 608 | 8 097 | 6 511 | 481 | 2 035 | 5 757 | 4 076 | 1 592 | 1 382 |
| Åland | 15 141 | 3,9 | 587 | 302 | 285 | 33 | 95 | 160 | 79 | 41 | 169 |
| Abroad | 0 | 0,0 | 163 | 90 | 73 | .. | 11 | 37 | 53 | 12 | 1 928 |
| Total | 2 636 703 | 14,4 | 378 399 | 198 315 | 180 084 | 13 079 | 54 827 | 131 241 | 127 150 | 43 202 | 32 468 |



Information about the website

On this website you will find the latest statistics from the Ministry of Economic Affairs and Employment's monthly Employment Bulletin. You can access a .pdf version of the current and previous months' Employment Bulletin by following the link on the right. The Employment Bulletin is based on the data from the MEAE's Employment Service Statistics. The Ministry of Economic Affairs and Employment compiles statistics on the clients of the Employment and economic development offices (TE offices), including registered job-seekers, labour market policy services, and job vacancies reported to TE offices by employers. The data is collected from the customer service registry (URA) used by the TE offices. This means that the data used by MEAE Employment Service Statistics is completely registry-based. The statistical data covers all persons, services, and open vacancies in the aforementioned groups, as separately defined in the registry by the classifications and variables for the statistical period in question.

Owing to seasonal variations, the Employment Bulletin always includes a comparison with the corresponding month in the previous year. The descriptors used in the Bulletin are also available in a table format. The Employment Bulletins are published at the end of the subsequent calendar month. The official date of publication is announced in advance.

The following symbols have been used:

. Category not applicable

.. Data not available or too uncertain for presentation, or subject to secrecy

Links:

- Employment Service Statistics online: <http://www.tem.fi/en/employment-bulletin-and-employment-service-statistics>
- Employment Service Statistics, Description and Quality Description <http://www.tem.fi/en/release-dates-of-statistics-and-description-and-quality-description>
- You can access key information from MEAE's Employment Service Statistics by visiting the Sector Online website: <http://www.toimialaonline.fi> Pathway: Statistical base – Labour market – Employment service statistics
- The Employment Service Statistics data is also available from the MEAE Publications page (only available in Finnish). www.tem.fi/tyopoliittinen-aikakauskirja
- Joint monthly report from MEAE and Statistics Finland http://tilastokeskus.fi/til/tyti/tie_en.html
- Comparison between the statistics of Statistics Finland and the Ministry of Economic Affairs and Employment http://tilastokeskus.fi/til/tyti/tyti_2015-04-28_men_001_en.html

Instructions for referencing: Official Statistics of Finland (OSF): Ministry of Economic Affairs and Employment / Employment Service Statistics. ISSN 1797-3694 201Y:MM, Employment Bulletin, MONTH 201Y. Helsinki: Ministry of Economic Affairs and Employment (date of reference). Available at: <http://www.temtyollisyyskatsaus.fi>



Contact information

Ministry of Economic Affairs and Employment

Employment and Entrepreneurship Department

Strategy and Steering Group

Kaisa-Mari Kuusela, +358 29 504 8294

Heikki Räisänen, +358 29 504 7118

Hilkka Kattelus, +358 29 504 8047

E-mail: [firstname.lastname\(at\)tem.fi](mailto:firstname.lastname(at)tem.fi) / [tyonvalitystilasto\(at\)tem.fi](mailto:tyonvalitystilasto(at)tem.fi)

<http://www.temtyollisyyskatsaus.fi>

ISSN: 1797-3694 (online publication)

